



115.111.129.98KWVE..-B-HFührungswagen

Carriages KWVE25-B-H (Series KWVE..-B-H)

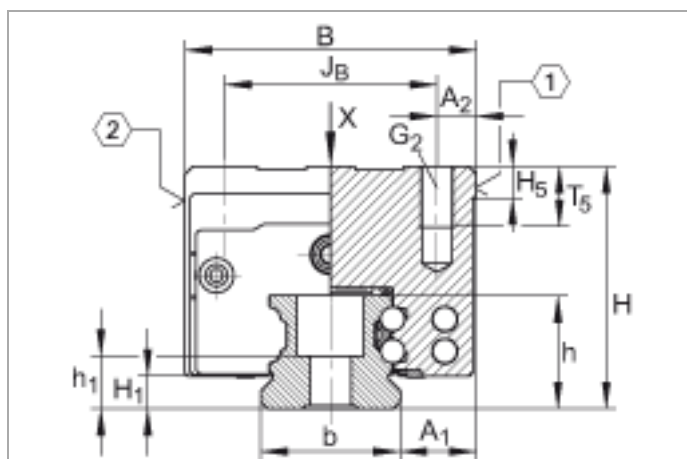
high, narrow carriage, four-row; corrosion-resistant design possible

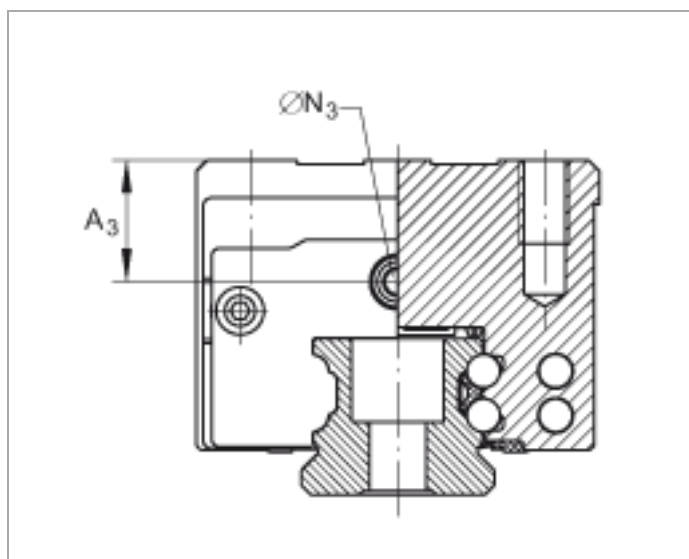
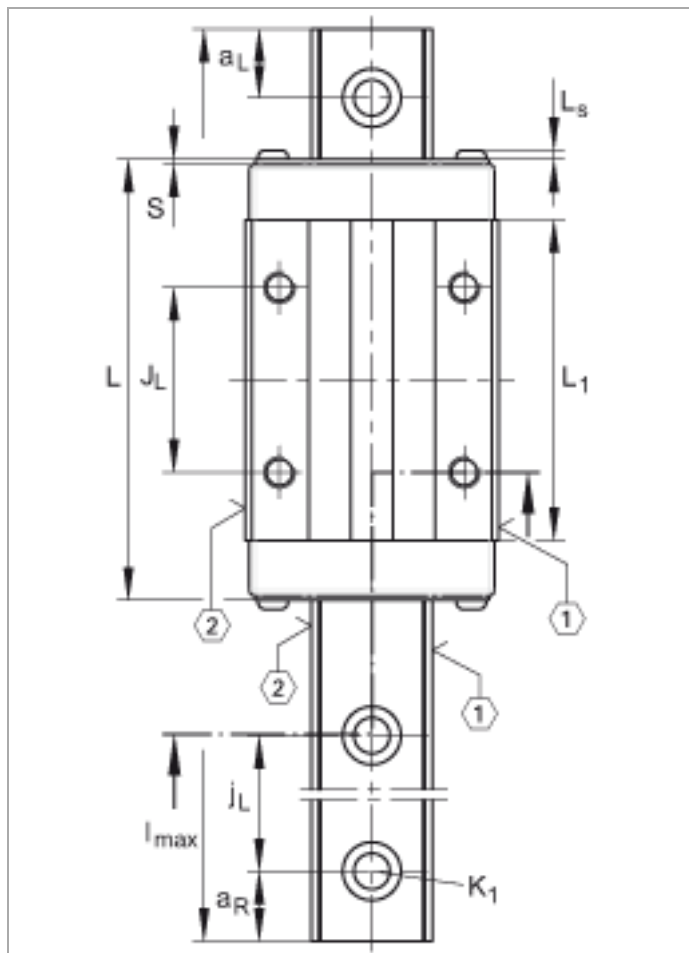
The datasheet is only an overview of dimensions and basic load ratings of the selected product. Please always observe all the guidelines in these overview pages. Further information is given on many products under the menu item "Description". You can also order comprehensive information via the Catalogue ordering system (https://www.schaeffler.de/content.schaeffler.de/en/news_media/index.jsp) or by telephone on +49 (91 32) 82 - 28 97.

| | |
|-----------|--|
| H | 40 mm |
| B | 48 mm |
| L | 83,3 mm |
| 1) | Locating face |
| 2) | Marking |
| 3) | Lubrication nipple with tapered head to DIN 71 412-B M6 is supplied loose |
| A1 | 12,5 mm |
| A2 | 6,5 mm |
| A3 | 15 mm |
| A4 | 10,5 mm |
| aL max | 53 mm a L and a R are dependent on the length l max of the guideway |
| aL min | 20 mm a L and a R are dependent on the length l max of the guideway |
| aR max | 53 mm a L and a R are dependent on the length l max of the guideway |
| aR min | 20 mm a L and a R are dependent on the length l max of the guideway |
| b | 23 mm Tolerance: -0,005/-0,03 |
| G2 | M6 For screws to DIN ISO 4762-12.9 Max. tightening torque in Nm: M4 = 5 M5 = 10 M6 = 17 M8 = 41 M10 = 83 |

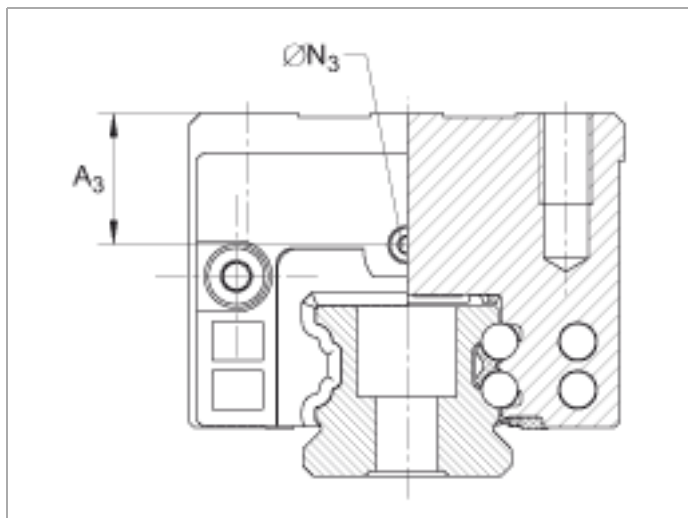
| | | |
|------------------|----------|---|
| | | M12 = 140 M14 = 220 If there is a possibility of settling, the fixing screws should be secured against rotation. |
| h | 18,7 mm | |
| H ₁ | 5,1 mm | |
| h ₁ | 8,7 mm | |
| H ₅ | 5,25 mm | |
| J _B | 35 mm | |
| J _L | 35 mm | |
| j _L | 60 mm | |
| J _{L6} | 17,9 mm | |
| K ₁ | M6 | For screws to DIN ISO 4762-12.9 Max. tightening torque in Nm: M3 = 2,5 M4 = 5 M5 = 10 M6 = 17 M8 = 41 M10 = 83 M12 = 140 M14 = 220 M16 = 340 If there is a possibility of settling, the fixing screws should be secured against rotation |
| L ₁ | 60,7 mm | |
| l _{max} | 2960 mm | Maximum length of single-piece guideways; longer guideways are supplied in several sections and are marked accordingly. Maximum single-piece guideway length of 6 m by agreement. |
| L _S | 1,65 mm | |
| N ₃ | 5,5 mm | Maximum permissible screw depth for lubrication connector: 7 mm |
| N ₄ | 5,6 mm | Maximum permissible screw depth for lubrication connector: 7 mm |
| S | 0,8 mm | |
| T ₅ | 10 mm | |
| W ₆ | 6 mm | Width across flats |
| mw | 0,65 kg | Mass of carriage |
| ms | 2,7 kg/m | Mass of guideway Calculation of basic load rating according to DIN 636, increased basic dynamic load rating possible on the basis of practical experience. |
| C | 17900 N | Basic dynamic load rating |
| C ₀ | 37000 N | Basic static load rating |

| | | |
|----------|--------|-----------------------------------|
| M_{0x} | 510 Nm | Static moment rating about X axis |
| M_{0y} | 395 Nm | Static moment rating about Y axis |
| M_{0z} | 395 Nm | Static moment rating about Z axis |

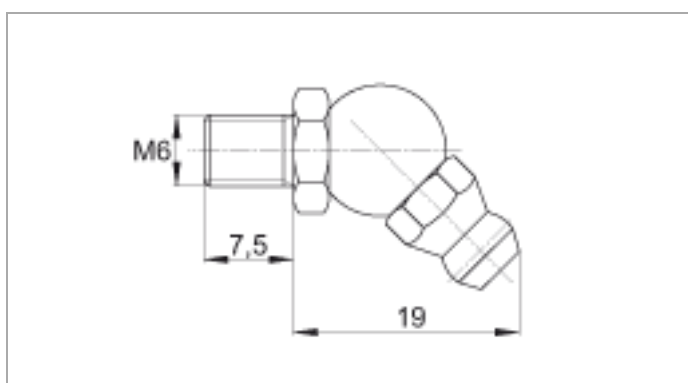




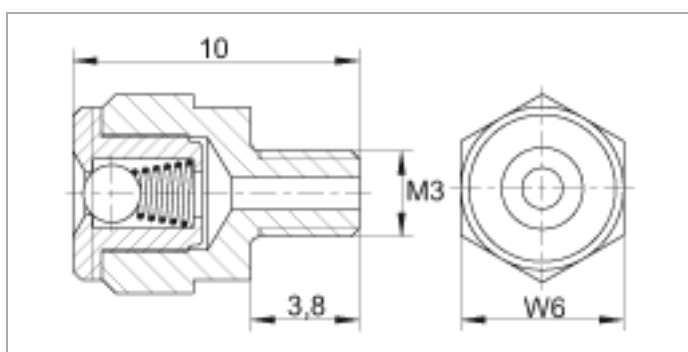
Lubrication connector on lateral face



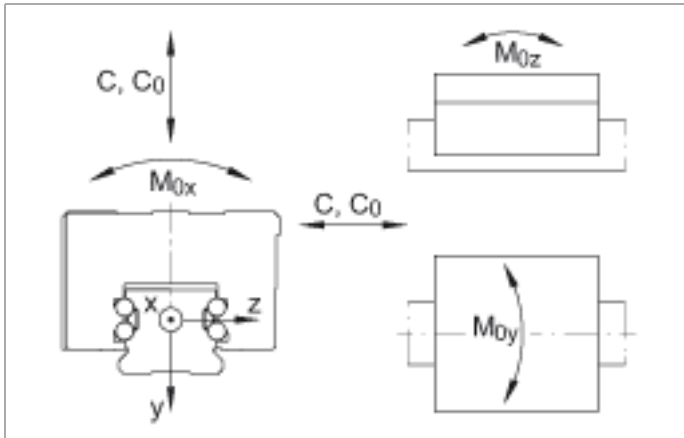
Lubrication connector on end face



Lubrication nipple 3)



Lubrication nipple 3)



Load directions