

1

2

3

4

5

6

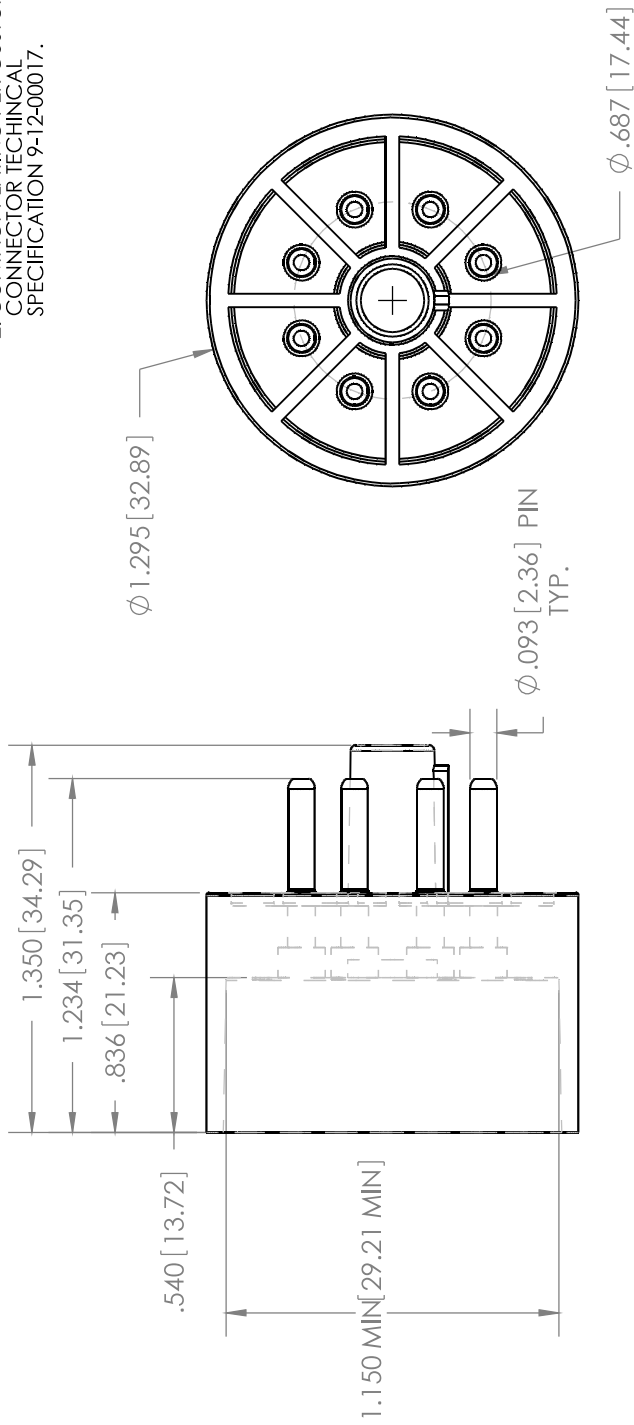
1-10-00006 Part Number Table		
Part Number	Open Holes	Filled Holes
TB08	1 THRU 8	NONE
TB08-5A	1, 4, 6, 7, & 8	2, 3, & 5

### NOTES

- CONNECTOR BODY PER CUSTOM CONNECTOR TECHNICAL SPECIFICATION 9-12-00004.
- CONTACT PLATING PER CUSTOM CONNECTOR TECHNICAL SPECIFICATION 9-12-00017.

W

W



D

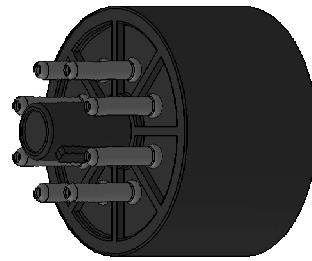
D

C

C

B

B



A

A

**Custom Connector Corporation**

1738 East 30th St.  
Cleveland, Ohio  
44114  
ph: (216) 241-1679  
fax: (216) 241-5529  
www.customconnector.com



**TOLERANCES**

**DO NOT SCALE**  
**ALL DIMENSIONS**  
**REFERENCE**

**CONFIDENTIALITY NOTICE**

THIS PRINT IS CONFIDENTIAL AND MUST NOT BE COPIED OR ITS CONTENTS REVEALED UNLESS AUTHORIZED BY CUSTOM CONNECTOR CORPORATION.

**INITIALS**

DRAWN BY: SB  
APPVD BY: SB  
COMMENTS:

**DATE**

9/28/2009  
9/28/2009

**PHYSICAL PROPERTIES**

MASS: 0.030\_lbs.  
VOL: 0.505\_cu\_in.

**SALES DRAWING #:** S-1-10-00006

**PRODUCT ID:** HB Series

**DESCRIPTION:** 8 Pin Octal Male Header

**REV:** B

**SIZE:** A

**SCALE:** 3:2

**SHEET:** 1 of 1

2

3

4

5

6

1

2

3

4

5

6

1

2

3

4

5

6

1