

FiberExpress Distribution Cables Tight Buffer – Indoor Riser & Plenum Rated

Fast installation, easy termination.
Sub-unitized cables provide easy routing and 900 μm tight-buffered fiber supporter fast and robust field-termination.

Applications:

- Horizontal distribution for Fiber-to-the-desk
- In-building backbone
- Factory floor automation
- Data Center EDA areas

Additional Options

- MSHA (Mining) Approvals

Indoor Specifications

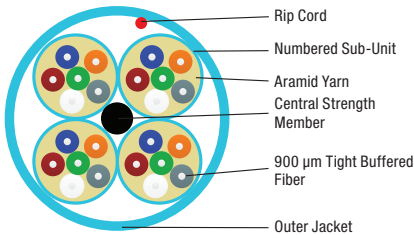
Bend Radius (vs. Cable OD)

| | |
|--------------|---------|
| Installation | 15 x OD |
| Operation | 10 x OD |

Temperature Range

| | |
|----------------------------|-----------------------------------|
| Storage | -40°C to 70°C (-40°C to 158°F) |
| Installation (Plenum/LSZH) | 0°C to 60°C (32°F to 140°F) |
| Installation (Riser) | -10°C to 60°C (14°F to 140°F) |
| Operation (Plenum/LSZH) | 0°C to 70°C (32°F to 158°F) |
| Operation (Riser) | -20°C to 70°C (-4°F to 158°F) |

Legend



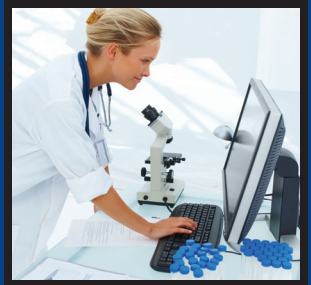
Compliance

- TIA/EIA-568-C.3
- ISO/IEC 11801, 2nd Edition
- Telcordia GR-409-CORE
- RoHS II 2011/65/EU
- REACH EC1907-2006
- NEC/CEC OFNR/OFN FT.4 (RISER - PVC)
- NEC/CEC OFNR/OFN FT.4 (LSZH - FRPE)
- NEC/CEC OFNP/OFN FT.6 (PLENUM - PVC or PVDF)
- ICEA S-83-596

| Description | Construction | Fiber Count | Fiber | Sub-Unit OD | Cable OD | | Weight | | Tensile Strength | | | |
|-----------------------------|--------------|-------------|-----------|-------------|----------|------|--------|-------------|------------------|-------|--------------|-------|
| | | | | | mm | in. | Kg/km | lb/1000 ft. | Operation | | Installation | |
| | | | | | | | | | N | lbs-f | N | lbs-f |
| Non-Unitized | | 2 | 900 μm TB | N/A | 4.8 | 0.19 | 22 | 15 | 222 | 50 | 556 | 125 |
| | | 4 | | | 4.8 | 0.19 | 25 | 17 | 222 | 50 | 556 | 125 |
| | | 6 | 900 μm TB | N/A | 5.8 | 0.23 | 36 | 24 | 334 | 75 | 667 | 150 |
| | | 8 | | | | | | | | | | |
| | | 10 | | | | | | | | | | |
| | | 12 | | | | | | | | | | |
| | 16 | 900 μm TB | N/A | 8.8 | 0.35 | 64 | 43 | 556 | 125 | 1112 | 250 | |
| | 24 | | | | | | | | | | | |
| Unitized 6-Fiber Sub-Units | | 24 | 900 μm TB | 4.5 | 13.1 | 0.52 | 145 | 97 | 1001 | 225 | 2002 | 450 |
| | | 36 | | | 16.0 | 0.63 | 221 | 148 | 1668 | 375 | 3336 | 750 |
| Unitized 12-Fiber Sub-Units | | 36 | 900 μm TB | 5.5 | 14.1 | 0.56 | 162 | 109 | 1001 | 225 | 2002 | 450 |
| | | 48 | | | 15.5 | 0.61 | 207 | 139 | 1423 | 320 | 2847 | 640 |
| | 72 | 19.0 | | | 0.75 | 321 | 216 | 2002 | 450 | 4226 | 950 | |
| | 96 | 22.8 | | | 0.90 | 536 | 360 | 2780 | 625 | 5560 | 1250 | |
| | 144 | 25.4 | | | 1.00 | 602 | 404 | 4226 | 950 | 8452 | 1900 | |

Above specifications provide a general representation for the product family. Improved specifications may exist for Riser, Plenum or LSZH constructions. Consult individual technical data sheets for exact specifications.

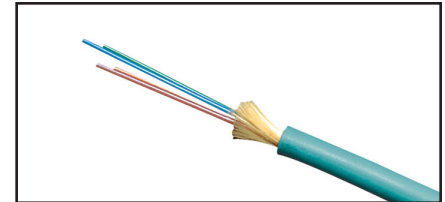
Faster.
Easier.
Better.



FiberExpress Distribution Cables (continued)
Tight Buffer — Indoor Riser & Plenum Rated

Standard Indoor Configurations

| Fiber Count | Belden Part Number | | | |
|--|--------------------|----------|------------------|------------|
| | OM1 Orange | OM3 Aqua | OM4 Erika Violet | OS2 Yellow |
| Non-Unitized - Riser | | | | |
| 2 | F1D002R9 | F3D002R9 | F4D002R9 | FISD002R9 |
| 6 | F1D006R9 | F3D006R9 | F4D006R9 | FISD006R9 |
| 12 | F1D012R9 | F3D012R9 | F4D012R9 | FISD012R9 |
| 24 | F1D024R9 | F3D024R9 | F4D024R9 | FISD024R9 |
| Non-Unitized - Plenum | | | | |
| 2 | F1D002P9 | F3D002P9 | F4D002P9 | FISD002P9 |
| 6 | F1D006P9 | F3D006P9 | F4D006P9 | FISD006P9 |
| 12 | F1D012P9 | F3D012P9 | F4D012P9 | FISD012P9 |
| 24 | F1D024P9 | F3D024P9 | F4D024P9 | FISD024P9 |
| Unitized 6 Fiber subunits riser | | | | |
| 24 | F1D024RJ | F3D024RJ | F4D024RJ | FISD024RJ |
| Unitized 6 Fiber subunits plenum | | | | |
| 24 | F1D024PJ | F3D024PJ | F4D024PJ | FISD024PJ |
| Unitized 12 Fiber subunits plenum | | | | |
| 36 | F1D036PK | F3D036PK | F4D036PK | FISD036PK |
| 48 | F1D048PK | F3D048PK | F4D048PK | FISD048PK |
| 72 | F1D072PK | F3D072PK | F4D072PK | FISD072PK |
| 96 | F1D096PK | F3D096PK | F4D096PK | FISD096PK |
| 144 | F1D144PK | F3D144PK | F4D144PK | FISD144PK |



Optical Fiber Distribution Cable

For an exhaustive selection contact Belden customer service or your local Belden Representative for more details.

FiberExpress Distribution Cables (continued) Tight Buffer – Indoor/Outdoor Riser, Plenum & LSZH Rated

Indoor/Outdoor Specifications

- Environmental Protection
 - UV Resistant Jacket
 - Moisture Resistant Jacket
 - Fungus Resistant Jacket
 - Water Blocking Aramid
 - Water Blocking Tape

Additional Options

- MSHA (Mining) Approvals

Indoor/Outdoor Specifications

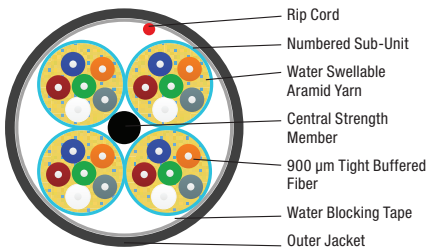
Bend Radius (vs. Cable OD)

| | |
|--------------|---------|
| Installation | 20 x OD |
| Operation | 10 x OD |

Temperature Range

| | |
|--------------|---------------------------------|
| Storage | -40°C to 70°C (-40 to 158°F) |
| Installation | -20 to 70°C (-4 to 158°F) |
| Operation | -40 to 70°C (-40 to 158°F) |

Legend



Compliance

- TIA/EIA-568-C.3
- ISO/IEC 11801, 2nd Edition
- Telcordia GR-20-CORE
- RoHS II 2011/65/EU
- REACH EC1907-2006
- NEC/CEC OFNR/OFN FT.4 (RISER - PVC)
- NEC/CEC OFNR/OFN FT.4 (LSZH - FRPE)
- NEC/CEC OFNP/OFN FT.6 (PLENUM - PVC or PVDF)
- ICEA S-104-696

| Description | Construction | Fiber Count | Fiber | Sub-Unit OD | Cable OD | | Weight | | Tensile Strength | | | |
|-----------------------------|--------------|-------------|-----------|-------------|----------|------|--------|-------------|------------------|-------|--------------|-------|
| | | | | | mm | in. | Kg/km | lb/1000 ft. | Operation | | Installation | |
| | | | | | | | | | N | lbs-f | N | lbs-f |
| Non-Unitized | | 2 | 900 μm TB | N/A | 4.8 | 0.19 | 22 | 15 | 222 | 50 | 556 | 125 |
| | | 4 | 900 μm TB | N/A | 4.8 | 0.19 | 25 | 17 | 222 | 50 | 556 | 125 |
| | | 6 | | | | | 31 | 21 | | | | |
| | | 8 | | | 5.8 | 0.23 | 36 | 24 | 334 | 75 | 667 | 150 |
| | | 10 | | | | | 39 | 26 | | | | |
| | | 12 | | | | | 43 | 29 | | | | |
| 16 | 8.8 | 0.35 | 64 | 43 | 556 | 125 | 1112 | 250 | | | | |
| 24 | | | 80 | 54 | | | | | | | | |
| Unitized 6-Fiber Sub-Units | | 24 | 900 μm TB | 4.5 | 13.1 | 0.52 | 145 | 97 | 1001 | 225 | 2002 | 450 |
| | | 36 | | | 16.0 | 0.63 | 221 | 148 | 1668 | 375 | 3336 | 750 |
| Unitized 12-Fiber Sub-Units | | 36 | 900 μm TB | 5.5 | 14.1 | 0.56 | 162 | 109 | 1001 | 225 | 2002 | 450 |
| | | 48 | | | 15.5 | 0.61 | 207 | 139 | 1423 | 320 | 2847 | 640 |
| | | 72 | | | 19.0 | 0.75 | 321 | 216 | 2002 | 450 | 4226 | 950 |
| | | 96 | | | 22.8 | 0.90 | 536 | 360 | 2780 | 625 | 5560 | 1250 |
| | | 144 | | | 25.4 | 1.00 | 602 | 404 | 4226 | 950 | 8452 | 1900 |

Above specifications provide a general representation for the product family. Improved specifications may exist for Riser, Plenum or LSZH constructions. Consult individual technical data sheets for exact specifications.

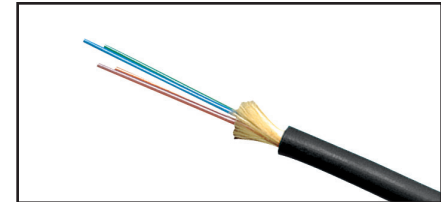
Faster.
Easier.
Better.



FiberExpress Distribution Cables (continued)
Tight Buffer — Indoor/Outdoor Riser, Plenum & LSZH Rated

Standard Indoor/Outdoor Configurations

| Fiber Count | Belden Part Number | | | |
|---|--------------------|-----------|-----------|-----------|
| | OM1 Black | OM3 Black | OM4 Black | OS2 Black |
| Non-Unitized - Riser/LSZH | | | | |
| 2 | FD1D002L9 | FD3D002L9 | FD4D002L9 | FSD002L9 |
| 6 | FD1D006L9 | FD3D006L9 | FD4D006L9 | FSD006L9 |
| 12 | FD1D012L9 | FD3D012L9 | FD4D012L9 | FSD012L9 |
| 24 | FD1D024L9 | FD3D024L9 | FD4D024L9 | FSD012L9 |
| Non-Unitized - Riser | | | | |
| 2 | FD1D002R9 | FD3D002R9 | FD4D002R9 | FSD002R9 |
| 6 | FD1D006R9 | FD3D006R9 | FD4D006R9 | FSD006R9 |
| 12 | FD1D012R9 | FD3D012R9 | FD4D012R9 | FSD012R9 |
| 24 | FD1D024R9 | FD3D024R9 | FD4D024R9 | FSD024R9 |
| Non-Unitized Plenum | | | | |
| 2 | FD1D002P9 | FD3D002P9 | FD4D002P9 | FSD002P9 |
| 6 | FD1D006P9 | FD3D006P9 | FD4D006P9 | FSD006P9 |
| 12 | FD1D012P9 | FD3D012P9 | FD4D012P9 | FSD012P9 |
| 24 | FD1D024P9 | FD3D024P9 | FD4D024P9 | FSD024P9 |
| Unitized 6-Fiber Sub-Units - Riser | | | | |
| 24 | FD1D024RJ | FD3D024RJ | FD4D024RJ | FSD024RJ |
| Unitized 6-Fiber Sub-Units - Plenum | | | | |
| 24 | FD1D024PJ | FD3D024PJ | FD4D024PJ | FSD024PJ |
| Unitized 12-Fiber Sub-Units - Riser/LSZH | | | | |
| 48 | FD1D048LK | FD3D048LK | FD4D048LK | FSD048LK |
| 72 | FD1D072LK | FD3D072LK | FD4D072LK | FSD072LK |
| 96 | FD1D096LK | FD3D096LK | FD4D096LK | FSD096LK |
| 144 | FD1D144LK | FD3D144LK | FD4D144LK | FSD144LK |
| Unitized 12-Fiber Sub-Units - Plenum | | | | |
| 48 | FD1D048PK | FD3D048PK | FD4D048PK | FSD048PK |
| 72 | FD1D072PK | FD3D072PK | FD4D072PK | FSD072PK |
| 96 | FD1D096PK | FD3D096PK | FD4D096PK | FSD096PK |
| 144 | FD1D144PK | FD3D144PK | FD4D144PK | FSD144PK |



Optical Fiber Distribution Cable, Indoor/Outdoor

For an exhaustive selection contact Belden customer service or your local Belden Representative for more details.

FiberExpress Armored Distribution Cables Tight Buffer – Indoor, Riser and Plenum Rated

Heightened Protection with simple termination. Augmenting the easy termination of Distribution cable with interlocking armor to provide an elevated resistance to cutting, crushing and the gnawing of rodents all while eliminating the additional expense of innerduct.

Applications:

- Campus/Inter Building
- Telecom Trunks
- Industrial
- Rugged Environments

Indoor Specifications

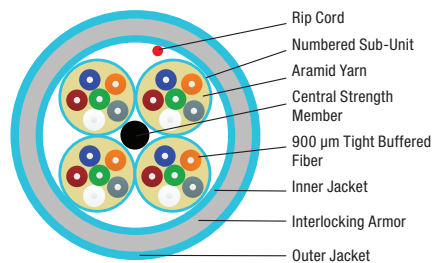
Bend Radius (vs. Cable OD)

| | |
|--------------|---------|
| Installation | 20 x OD |
| Operation | 15 x OD |

Temperature Range

| | |
|----------------------------|-----------------------------------|
| Storage | -40°C to 70°C (-40°F to 158°F) |
| Installation (Plenum/LSZH) | 0°C to 60°C (32°F to 140°F) |
| Installation (Riser) | -10°C to 60°C (14°F to 140°F) |
| Operation (Plenum/LSZH) | 0°C to 70°C (32°F to 158°F) |
| Operation (Riser) | -20°C to 70°C (-4°F to 158°F) |

Legend



| Description | Construction | Fiber Count | Fiber | Sub-Unit OD | Cable OD | | Weight | | Tensile Strength | | | |
|-----------------------------|--------------|-------------|-----------|-------------|----------|------|--------|-------------|------------------|-------|--------------|-------|
| | | | | | mm | in. | Kg/km | lb/1000 ft. | Operation | | Installation | |
| | | | | | | | | | N | lbs-f | N | lbs-f |
| Non-Unitized | | 6 | 900 µm TB | N/A | 14.5 | 0.57 | 189 | 127 | 360 | 81 | 1201 | 270 |
| | | 12 | | | 15.7 | 0.62 | 150 | 223 | 400 | 90 | 1334 | 300 |
| | | 24 | | | 17.0 | 0.67 | 335 | 225 | | | | |
| Unitized 6-Fiber Sub-Units | | 24 | 900 µm TB | 4.5 | 21.5 | 0.85 | 391 | 263 | 890 | 200 | 2700 | 600 |
| | | 36 | | | 25.3 | 1.00 | 548 | 368 | | | | |
| Unitized 12-Fiber Sub-Units | | 48 | 900 µm TB | 5.5 | 24.6 | 0.97 | 540 | 363 | 890 | 200 | 2700 | 600 |
| | | 72 | | | 27.8 | 1.09 | 716 | 481 | | | | |
| | | 96 | | | 32.5 | 1.28 | 930 | 625 | | | | |
| | | 144 | | | 35.6 | 1.40 | 1005 | 675 | | | | |

Above specifications provide a general representation for the product family. Improved specifications may exist for Riser, Plenum or LSZH constructions. Consult individual technical data sheets for exact specifications.

Compliance

- TIA/EIA-568-C.3
- ISO/IEC 11801, 2nd Edition
- Telcordia GR-409-CORE
- RoHS II 2011/65/EU
- REACH EC1907-2006
- NEC/CEC OFNR/OFN FT.4 (RISER - PVC)
- NEC/CEC OFNR/OFN FT.4 (LSZH - FRPE)
- NEC/CEC OFNP/OFN FT.6 (PLENUM - PVC or PVDF)
- ICEA S-83-596

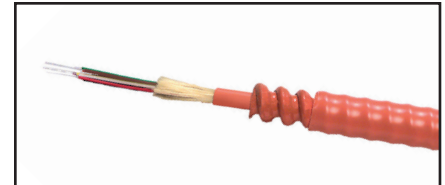
Faster.
Easier.
Better.



FiberExpress Armored Distribution Cables (continued)
Tight Buffer — Indoor Riser & Plenum Rated

Standard Indoor Armored Configurations

| Fiber Count | Belden Part Number | | | |
|---|--------------------|----------|------------------|------------|
| | OM1 Orange | OM3 Aqua | OM4 Erika Violet | OS2 Yellow |
| Non-Unitized Riser | | | | |
| 6 | F1D006F9 | F3D006F9 | F4D006F9 | FISD006F9 |
| 12 | F1D012F9 | F3D012F9 | F4D012F9 | FISD012F9 |
| 24 | F1D024F9 | F3D024F9 | F4D024F9 | FISD024F9 |
| Non-unitized Plenum | | | | |
| 6 | F1D006A9 | F3D006A9 | F4D006A9 | FISD006A9 |
| 12 | F1D012A9 | F3D012A9 | F4D012A9 | FISD012A9 |
| 24 | F1D024A9 | F3D024A9 | F4D024A9 | FISD024A9 |
| Unitized 6 fiber sub-units plenum | | | | |
| 24 | F1D024AJ | F3D024AJ | F4D024AJ | FISD024AJ |
| Unitized 12 fiber sub-units plenum | | | | |
| 48 | F1D048AK | F3D048AK | F4D048AK | FISD048AK |
| 72 | F1D072AK | F3D072AK | F4D072AK | FISD072AK |
| 96 | F1D096AK | F3D096AK | F4D096AK | FISD096AK |
| 144 | F1D144AK | F3D144AK | F4D144AK | FISD144AK |



Armored Optical Fiber Distribution Cable

For an exhaustive selection contact Belden customer service or your local Belden Representative for more details.

FiberExpress Armored Distribution Cables (continued) Tight Buffer – Indoor/Outdoor, Riser and Plenum Rated

Indoor/Outdoor Specifications

- Environmental Protection
 - UV Resistant Jacket
 - Moisture Resistant Jacket
 - Fungus Resistant Jacket
 - Water Blocking Aramid
 - Water Blocking Tape

Additional Options

- MSHA (Mining) Approvals

Indoor/Outdoor Specifications

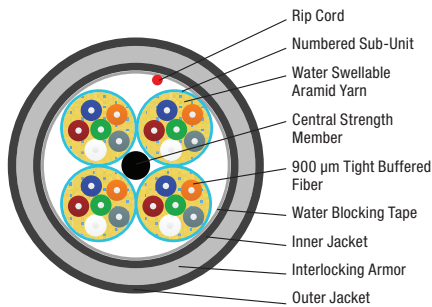
Bend Radius (vs. Cable OD)

| | |
|--------------|---------|
| Installation | 20 x OD |
| Operation | 15 x OD |

Temperature Range

| | |
|--------------|-----------------------------------|
| Storage | -40°C to 70°C (-40°F to 158°F) |
| Installation | -20°C to 70°C (-4°F to 158°F) |
| Operation | -40°C to 70°C (-40°F to 158°F) |

Legend



| Description | Construction | Fiber Count | Fiber | Sub-Unit OD | Cable OD | | Weight | | Tensile Strength | | | |
|-----------------------------|--------------|-------------|-----------|-------------|----------|------|--------|-------------|------------------|-------|--------------|-------|
| | | | | | mm | in. | Kg/km | lb/1000 ft. | Operation | | Installation | |
| | | | | | | | | | N | lbs-f | N | lbs-f |
| Non-Unitized | | 6 | 900 µm TB | N/A | 14.5 | 0.57 | 189 | 127 | 360 | 81 | 1201 | 270 |
| | | 12 | | | 15.7 | 0.62 | 150 | 223 | 400 | 90 | 1334 | 300 |
| | | 24 | | | 17.0 | 0.67 | 335 | 225 | | | | |
| Unitized 6-Fiber Sub-Units | | 24 | 900 µm TB | 4.5 | 21.5 | 0.85 | 391 | 263 | 890 | 200 | 2700 | 600 |
| | | 36 | | | 25.3 | 1.00 | 548 | 368 | | | | |
| Unitized 12-Fiber Sub-Units | | 48 | 900 µm TB | 5.5 | 24.6 | 0.97 | 540 | 363 | | | | |
| | | 72 | | | 27.8 | 1.09 | 716 | 481 | | | | |
| | | 96 | | | 32.5 | 1.28 | 930 | 625 | 890 | 200 | 2700 | 600 |
| | | 144 | | | 35.6 | 1.40 | 1005 | 675 | | | | |

Above specifications provide a general representation for the product family. Improved specifications may exist for Riser, Plenum or LSZH constructions. Consult individual technical data sheets for exact specifications.

Compliance

- TIA/EIA-568-C.3
- ISO/IEC 11801, 2nd Edition
- Telcordia GR-20-CORE
- RoHS II 2011/65/EU
- REACH EC1907-2006
- NEC/CEC OFNR/OFN FT.4 (RISER - PVC)
- NEC/CEC OFNR/OFN FT.4 (LSZH - FRPE)
- NEC/CEC OFNP/OFN FT.6 (PLENUM - PVC or PVDF)
- ICEA S-104-696

Faster.
Easier.
Better.



FiberExpress Armored Distribution Cables (continued)
Tight Buffer — Indoor/Outdoor, Riser & Plenum Rated

Standard Indoor / Outdoor Armored Configurations

| Fiber Count | Belden Part Number | | | |
|---|--------------------|-----------|-----------|-----------|
| | OM1 Black | OM3 Black | OM4 Black | OS2 Black |
| Non-Unitized Riser | | | | |
| 6 | FD1D006F9 | FD3D006F9 | FD4D006F9 | FSD006F9 |
| 12 | FD1D012F9 | FD3D012F9 | FD4D012F9 | FSD012F9 |
| 24 | FD1D024F9 | FD3D024F9 | FD4D024F9 | FSD024F9 |
| Non-unitized Plenum | | | | |
| 6 | FD1D006A9 | FD3D006A9 | FD4D006A9 | FSD006A9 |
| 12 | FD1D012A9 | FD3D012A9 | FD4D012A9 | FSD012A9 |
| 24 | FD1D024A9 | FD3D024A9 | FD4D024A9 | FSD024A9 |
| Unitized 6 fiber sub-units plenum | | | | |
| 24 | FD1D024AJ | FD3D024AJ | FD4D024AJ | FSD024AJ |
| Unitized 12 fiber sub-units plenum | | | | |
| 48 | FD1D048AK | FD3D048AK | FD4D048AK | FSD048AK |
| 72 | FD1D072AK | FD3D072AK | FD4D072AK | FSD072AK |
| 96 | FD1D096AK | FD3D096AK | FD4D096AK | FSD096AK |
| 144 | FD1D144AK | FD3D144AK | FD4D144AK | FSD144AK |

For an exhaustive selection contact Belden customer service or your local Belden Representative for more details.

FiberExpress Hybrid Distribution Cables Tight Buffer – Indoor/Outdoor, Riser and Plenum Rated

Hybrid cables combine multiple grades of fiber in a single unitized cable easily supporting various applications in a single cable which minimize installation labor.

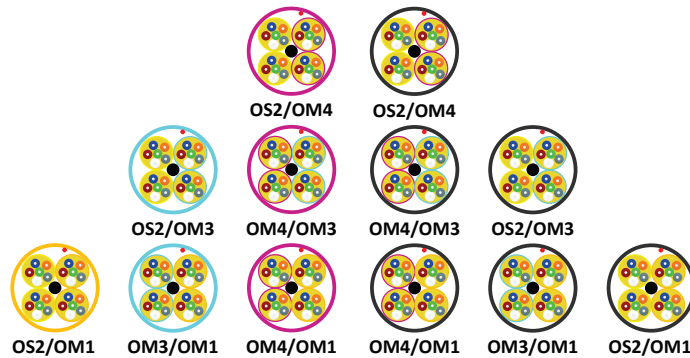
Applications

- In building backbones
- Factory floor automation
- Broadcast and A/V in-building installation

Additional Options

- Breakout Cable
- uMini-Distribution Cable
- 2-fiber to 144-fiber constructions
- Additional fiber grade combinations

Standard Hybrid Cable Color



Standard Hybrid Distribution Configurations

Building a SmartPart Number

| <p>1. Choose FX Fiber Cable</p> <div style="border: 1px solid black; padding: 5px; text-align: center; width: 40px; margin: 0 auto;">FI</div> <table border="1" style="width: 100%; border-collapse: collapse;"> <thead> <tr> <th colspan="2">FX Fiber Cable</th> </tr> </thead> <tbody> <tr> <td>FI</td> <td>Indoor Cable</td> </tr> <tr> <td>FD</td> <td>Indoor/Outdoor Cable</td> </tr> </tbody> </table> | FX Fiber Cable | | FI | Indoor Cable | FD | Indoor/Outdoor Cable | <p>2. Choose Fiber Grade (Primary/Secondary)</p> <div style="border: 1px solid black; padding: 5px; text-align: center; width: 40px; margin: 0 auto;">H</div> <table border="1" style="width: 100%; border-collapse: collapse;"> <thead> <tr> <th colspan="2">Fiber Grade (PRI/SEC)</th> </tr> </thead> <tbody> <tr> <td>E</td> <td>OS2/OM4</td> </tr> <tr> <td>H</td> <td>OS2/OM3</td> </tr> <tr> <td>F</td> <td>OS2/OM1</td> </tr> <tr> <td>K</td> <td>OM4/OM1</td> </tr> <tr> <td>M</td> <td>OM3/OM1</td> </tr> </tbody> </table> | Fiber Grade (PRI/SEC) | | E | OS2/OM4 | H | OS2/OM3 | F | OS2/OM1 | K | OM4/OM1 | M | OM3/OM1 | <p>3. Choose Family</p> <div style="border: 1px solid black; padding: 5px; text-align: center; width: 40px; margin: 0 auto;">D</div> <table border="1" style="width: 100%; border-collapse: collapse;"> <thead> <tr> <th colspan="2">Family</th> </tr> </thead> <tbody> <tr> <td>D</td> <td>Distribution</td> </tr> </tbody> </table> | Family | | D | Distribution | <p>4. Choose Fiber Configuration</p> <div style="border: 1px solid black; padding: 5px; text-align: center; width: 60px; margin: 0 auto;">H22</div> <table border="1" style="width: 100%; border-collapse: collapse;"> <thead> <tr> <th colspan="2">Fiber Configuration</th> </tr> </thead> <tbody> <tr> <td>H13</td> <td>4 Subunits, 1 Primary Subunit, 3 Secondary subunits</td> </tr> <tr> <td>H22</td> <td>4 Subunits, 2 Primary Subunits, 2 Secondary Subunits</td> </tr> <tr> <td>H31</td> <td>4 Subunits, 3 Primary Subunits, 1 Secondary Subunit</td> </tr> </tbody> </table> | Fiber Configuration | | H13 | 4 Subunits, 1 Primary Subunit, 3 Secondary subunits | H22 | 4 Subunits, 2 Primary Subunits, 2 Secondary Subunits | H31 | 4 Subunits, 3 Primary Subunits, 1 Secondary Subunit | <p>5. Choose Flammability Rating and Protection</p> <div style="border: 1px solid black; padding: 5px; text-align: center; width: 40px; margin: 0 auto;">P</div> <table border="1" style="width: 100%; border-collapse: collapse;"> <thead> <tr> <th colspan="2">Flammability Rating and Protection</th> </tr> </thead> <tbody> <tr> <td colspan="2">Plenum Group</td> </tr> <tr> <td>P</td> <td>Plenum (OFNP)</td> </tr> <tr> <td>A</td> <td>Plenum Interlocked Aluminum Armor (OFCP)</td> </tr> <tr> <td colspan="2">Riser Group</td> </tr> <tr> <td>R</td> <td>Riser (OFNR)</td> </tr> <tr> <td>F</td> <td>Riser Interlocked Aluminum Armor (OFCR)</td> </tr> </tbody> </table> | Flammability Rating and Protection | | Plenum Group | | P | Plenum (OFNP) | A | Plenum Interlocked Aluminum Armor (OFCP) | Riser Group | | R | Riser (OFNR) | F | Riser Interlocked Aluminum Armor (OFCR) | <p>6. Choose Subunit Type/Configuration</p> <div style="border: 1px solid black; padding: 5px; text-align: center; width: 40px; margin: 0 auto;">J</div> <table border="1" style="width: 100%; border-collapse: collapse;"> <thead> <tr> <th colspan="2">Subunit Type/Configuration</th> </tr> </thead> <tbody> <tr> <td>J</td> <td>4.5 mm Subunit, 6 x 900 μm Fiber</td> </tr> <tr> <td>K</td> <td>5.5 mm Subunit, 12 x 900 μm Fiber</td> </tr> </tbody> </table> | Subunit Type/Configuration | | J | 4.5 mm Subunit, 6 x 900 μm Fiber | K | 5.5 mm Subunit, 12 x 900 μm Fiber |
|--|--|--|----|--------------|----|----------------------|--|-----------------------|--|---|---------|---|---------|---|---------|---|---------|---|---------|---|--------|--|---|--------------|---|---------------------|--|-----|---|-----|--|-----|---|--|------------------------------------|--|---------------------|--|---|---------------|---|--|--------------------|--|---|--------------|---|---|--|----------------------------|--|---|-------------------------------------|---|--------------------------------------|
| FX Fiber Cable | | | | | | | | | | | | | | | | | | | | | | | | | | | | | | | | | | | | | | | | | | | | | | | | | | | | | | | |
| FI | Indoor Cable | | | | | | | | | | | | | | | | | | | | | | | | | | | | | | | | | | | | | | | | | | | | | | | | | | | | | | |
| FD | Indoor/Outdoor Cable | | | | | | | | | | | | | | | | | | | | | | | | | | | | | | | | | | | | | | | | | | | | | | | | | | | | | | |
| Fiber Grade (PRI/SEC) | | | | | | | | | | | | | | | | | | | | | | | | | | | | | | | | | | | | | | | | | | | | | | | | | | | | | | | |
| E | OS2/OM4 | | | | | | | | | | | | | | | | | | | | | | | | | | | | | | | | | | | | | | | | | | | | | | | | | | | | | | |
| H | OS2/OM3 | | | | | | | | | | | | | | | | | | | | | | | | | | | | | | | | | | | | | | | | | | | | | | | | | | | | | | |
| F | OS2/OM1 | | | | | | | | | | | | | | | | | | | | | | | | | | | | | | | | | | | | | | | | | | | | | | | | | | | | | | |
| K | OM4/OM1 | | | | | | | | | | | | | | | | | | | | | | | | | | | | | | | | | | | | | | | | | | | | | | | | | | | | | | |
| M | OM3/OM1 | | | | | | | | | | | | | | | | | | | | | | | | | | | | | | | | | | | | | | | | | | | | | | | | | | | | | | |
| Family | | | | | | | | | | | | | | | | | | | | | | | | | | | | | | | | | | | | | | | | | | | | | | | | | | | | | | | |
| D | Distribution | | | | | | | | | | | | | | | | | | | | | | | | | | | | | | | | | | | | | | | | | | | | | | | | | | | | | | |
| Fiber Configuration | | | | | | | | | | | | | | | | | | | | | | | | | | | | | | | | | | | | | | | | | | | | | | | | | | | | | | | |
| H13 | 4 Subunits, 1 Primary Subunit, 3 Secondary subunits | | | | | | | | | | | | | | | | | | | | | | | | | | | | | | | | | | | | | | | | | | | | | | | | | | | | | | |
| H22 | 4 Subunits, 2 Primary Subunits, 2 Secondary Subunits | | | | | | | | | | | | | | | | | | | | | | | | | | | | | | | | | | | | | | | | | | | | | | | | | | | | | | |
| H31 | 4 Subunits, 3 Primary Subunits, 1 Secondary Subunit | | | | | | | | | | | | | | | | | | | | | | | | | | | | | | | | | | | | | | | | | | | | | | | | | | | | | | |
| Flammability Rating and Protection | | | | | | | | | | | | | | | | | | | | | | | | | | | | | | | | | | | | | | | | | | | | | | | | | | | | | | | |
| Plenum Group | | | | | | | | | | | | | | | | | | | | | | | | | | | | | | | | | | | | | | | | | | | | | | | | | | | | | | | |
| P | Plenum (OFNP) | | | | | | | | | | | | | | | | | | | | | | | | | | | | | | | | | | | | | | | | | | | | | | | | | | | | | | |
| A | Plenum Interlocked Aluminum Armor (OFCP) | | | | | | | | | | | | | | | | | | | | | | | | | | | | | | | | | | | | | | | | | | | | | | | | | | | | | | |
| Riser Group | | | | | | | | | | | | | | | | | | | | | | | | | | | | | | | | | | | | | | | | | | | | | | | | | | | | | | | |
| R | Riser (OFNR) | | | | | | | | | | | | | | | | | | | | | | | | | | | | | | | | | | | | | | | | | | | | | | | | | | | | | | |
| F | Riser Interlocked Aluminum Armor (OFCR) | | | | | | | | | | | | | | | | | | | | | | | | | | | | | | | | | | | | | | | | | | | | | | | | | | | | | | |
| Subunit Type/Configuration | | | | | | | | | | | | | | | | | | | | | | | | | | | | | | | | | | | | | | | | | | | | | | | | | | | | | | | |
| J | 4.5 mm Subunit, 6 x 900 μm Fiber | | | | | | | | | | | | | | | | | | | | | | | | | | | | | | | | | | | | | | | | | | | | | | | | | | | | | | |
| K | 5.5 mm Subunit, 12 x 900 μm Fiber | | | | | | | | | | | | | | | | | | | | | | | | | | | | | | | | | | | | | | | | | | | | | | | | | | | | | | |

For an exhaustive selection contact Belden customer service or your local Belden Representative for more details.

Examples:

FIHDH22PJ - Unitized – 6 fiber subunits and for FDEDH31AK's description to say Unitized 12 fiber subunits.

FDEDH31AK - FX Indoor/Outdoor Cable, Hybrid Distribution Tight Buffered Cable, Unitized, 48 fiber (36 fiber OS2, 12 fiber OM4), Plenum Armored, Black Jacket