

# Twist-Lock® Devices 30A, 125V AC, 2 Pole, 3 Wire Grounding Watertight Safety-Shroud® Reverse Service Flanged Inlet

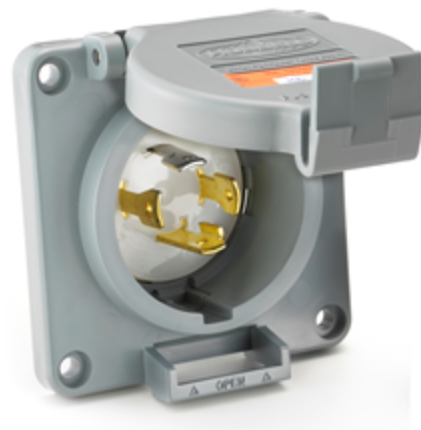
# HUBBELL

## Features

- UL type 4X environmental seal while in use and when closed
- High impact, thermoplastic housing for heavy-duty industrial environments
- Alignment arrows with lock and unlock symbols provide a visual indication that devices are properly connected
- Catalog number and color coded voltage rating are visible even when in use

## Ordering Information

Description	Device Color	UPC	Catalog Number
Gray PBT housing and flange	Gray		HBL2615SWR



## Listings

Listed to UL 498  
Fed.Spec. W-C-596  
Certified to CSA C22.2 No.42  
UL Listed, CSA Certified to Type 4, 4X and Type 12

## Specifications

Housing	PBT
Blades	Brass
Terminal Retainer	Clear polycarbonate
Terminal Screws	#10-32 Brass (Phillips / Slotted / Robertson)

## Performance

### Electrical

Current Interrupting Certified for current interrupting at full rated current  
Dielectric Voltage Withstands 2,000V minimum

### Mechanical

Terminal Accommodation #16 AWG - #8 AWG solid or stranded copper wire only.

Terminal Identification Terminals identified in accordance with UL 498

### Environmental

Flammability V0 per UL94 or CSA 22.2 No.0.17  
Moisture Resistance Type 4, 4X, 12, IP66 suitability  
Operating Temperatures Maximum Continuous 75°C Minimum -40°C (w/o impact)

## Accessories

Watertight Safety Shroud Reverse Service Connector	HBL2613SR
Non-Metallic Backbox	BB2030N
2-Gang Weatherproof Box Adapter Plate	HBL2030AP
Mechanical Interlock	HBLMITL

## Resources

eCatalog

Dimensions in Inches (mm)

Hubbell Wiring Device-Kellems • Hubbell Incorporated (Delaware) • 40 Waterview Drive • Shelton, CT 06484

Phone (800) 288-6000 • Fax (800) 255-1031 • Specifications subject to change without notice.

