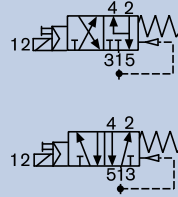


# 5/2 on 3/2-way Convertible Solenoid Valve for pneumatics, NAMUR version

6519 NAMUR

## NPT 1/4", NAMUR

- High flow rate
- Low power consumption
- High switching reliability
- Manual override as standard
- Corrosion-resistant construction



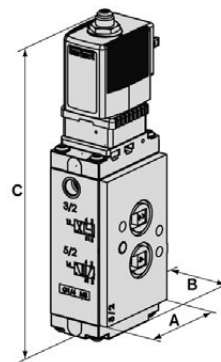
The solenoid valve, Type 6519 NAMUR, is provided with a NAMUR standard flange for easy, direct mounting to pneumatic actuators. It is manufactured from high-quality man-made materials.

### Technical Data

<b>Orifice</b>	DN6.0 mm
<b>Body Materials</b>	
Pilot valve and main valve	Polyamide (PA)
<b>Thread insert material</b>	Brass, nickel-plated or stainless steel
<b>Seal material</b>	NBR and PUR
<b>Pneumatic connection</b>	
Supply ports 1, 3, 5	Threaded port NPT 1/4"
Service ports 2 and 4	NAMUR flange
<b>Electrical connection</b>	Tag connector acc. to DIN EN 175301-803 Form A, Type 2508 (not included)
<b>Power consumption</b>	AC 11 VA (inrush), 6 VA (hold), DC 2 W
<b>Protection</b>	IP65 with cable plug
<b>Operating voltage</b>	024/DC, 024/230 V, 50-60 Hz
<b>Voltage tolerance</b>	±10%
<b>Duty cycle</b>	100 % continuous rating
<b>Ambient temperature</b>	-13 °F to 131 °F (-25 °C to +55 °C)
<b>Mediums</b>	Compressed air, nitrogen, instrument air
<b>Environmental conditions</b>	Slightly aggressive, also open air
<b>Response times <sup>1)</sup></b>	
Opening	20 ms
Closing	40 ms

<sup>1)</sup> Measured at valve outlet at 87 PSI (6 bar) and 68 °F (+20 °C) acc. to ISO 12238.  
*Opening:* pressure rise 0 to 90%, *Closing:* pressure drop 100 to 10%

### Envelope Dimensions [mm] (see datasheet for details)



For plug details please see datasheet and table below.  
 Class 1 Div I valves are supplied with flying leads and conduit connector.

Size	A	B	C
1/8"	1.26	1.38	2.89
1/4"	1.81	1.38	3.12

### Ordering Chart

Type	Connections mechanical / electrical	Approvals	Item No.	
			24/DC	120/60
Standard	NPT1/4" Nickel-plated / 2508 plug	UR	296 425	296 428
Standard	NPT1/4" Nickel-plated / 2509 conduit plug	UL	296 478	296 488
HazEx™	NPT1/4" Stainless / conduit with 18" flying leads	FM, CSA Class I, Div 1	459 232	459 233