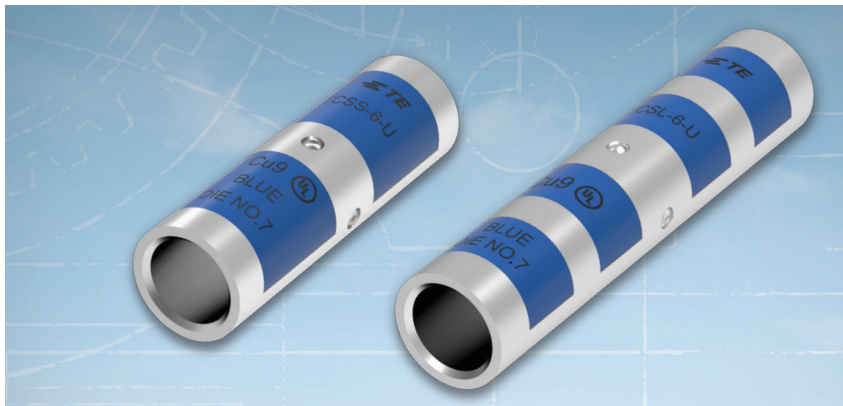


COPPER AND ALUMINUM COMPRESSION SPLICES

Copper Compression Splices



TE's Copper Compression Splices are ideal for secondary distribution up to 35 kV. Copper Compression Splices are available to accommodate a range of cable sizes from #8 AWG to 1000 kcmil copper.

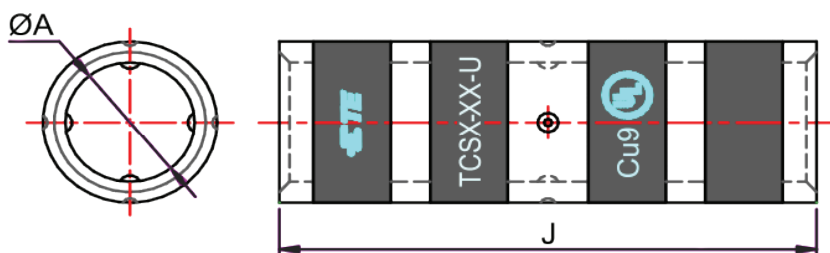
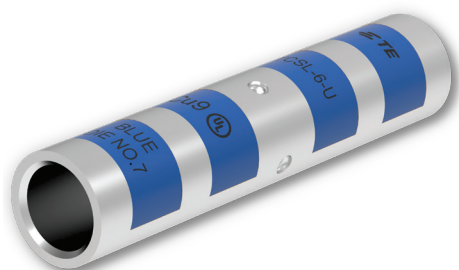
Use for splicing solid and concentric stranded, class B conductors with either a standard or long barrel version and meet the requirements of UL 486.

Compression crimping forms the splice and conductor into a strong, almost homogeneous unit, producing excellent conductivity, low temperature rise, and outstanding resistance to oxidation and corrosion. Compression of the splice barrel creates a highly reliable connection that enables connector to perform well and at a lower temperature than the conductor during operation.

Key Features

- One piece electrolytic copper construction for superior electrical performance
- Tin-plated for corrosion resistance and durability, and tempered for easy crimping
- UL Listed as per UL 486A-486B
- Industry standard color coding system simplifies die selection
- Easy to install with industry standard tooling

Copper And Aluminum Compression Splices



STANDARD BARREL

| Description | Conductor AWG/MCM | Dimensions in mm (in) | | Color Code |
|-------------|-------------------|-----------------------|--------------|------------|
| | | A Ø | J | |
| TCSS-8-U | 8 | 4.4 (0.17) | 25.4 (1.00) | Red |
| TCSS-6-U | 6 | 5.0 (0.20) | 44.5 (1.75) | Blue |
| TCSS-4-U | 4 | 6.3 (0.25) | 44.5 (1.75) | Gray |
| TCSS-2-U | 2 | 7.8 (0.31) | 50.8 (2.00) | Brown |
| TCSS-1-U | 1 | 9.0 (0.35) | 52.3 (2.06) | Green |
| TCSS-1/0-U | 1/0 | 9.9 (0.39) | 52.8 (2.08) | Pink |
| TCSS-2/0-U | 2/0 | 11.3 (0.45) | 55.1 (2.17) | Black |
| TCSS-3/0-U | 3/0 | 12.4 (0.49) | 58.4 (2.3) | Orange |
| TCSS-4/0-U | 4/0 | 14.2 (0.56) | 58.9 (2.32) | Purple |
| TCSS-250-U | 250 | 15.1 (0.59) | 62.5 (2.46) | Yellow |
| TCSS-300-U | 300 | 16.5 (0.65) | 62.7 (2.47) | White |
| TCSS-350-U | 350 | 17.8 (0.70) | 66.0 (2.60) | Red |
| TCSS-400-U | 400 | 19.3 (0.76) | 69.6 (2.74) | Blue |
| TCSS-500-U | 500 | 21.1 (0.83) | 80.0 (3.15) | Brown |
| TCSS-600-U | 600 | 23.4 (0.92) | 81.8 (3.22) | Green |
| TCSS-750-U | 750 | 26.2 (1.03) | 94.5 (3.72) | Black |
| TCSS-1000-U | 1000 | 29.7 (1.17) | 108.7 (4.28) | White |

LONG BARREL

| Description | Conductor AWG/MCM | Dimensions in mm (in) | | Color Code |
|-------------|-------------------|-----------------------|--------------|------------|
| | | A Ø | J | |
| TCSL-8-U | 8 | 4.4 (0.17) | 44.5 (1.75) | Red |
| TCSL-6-U | 6 | 5.0 (0.20) | 60.5 (2.38) | Blue |
| TCSL-4-U | 4 | 6.3 (0.25) | 64.8 (2.55) | Gray |
| TCSL-2-U | 2 | 7.8 (0.31) | 71.6 (2.82) | Brown |
| TCSL-1-U | 1 | 9.0 (0.35) | 78.0 (3.07) | Green |
| TCSL-1/0-U | 1/0 | 9.9 (0.39) | 77.7 (3.06) | Pink |
| TCSL-2/0-U | 2/0 | 11.3 (0.45) | 83.8 (3.3) | Black |
| TCSL-3/0-U | 3/0 | 12.4 (0.49) | 83.8 (3.3) | Orange |
| TCSL-4/0-U | 4/0 | 14.2 (0.56) | 90.7 (3.57) | Purple |
| TCSL-250-U | 250 | 15.1 (0.59) | 90.9 (3.58) | Yellow |
| TCSL-300-U | 300 | 16.5 (0.65) | 110.2 (4.34) | White |
| TCSL-350-U | 350 | 17.8 (0.70) | 110.5 (4.35) | Red |
| TCSL-400-U | 400 | 19.3 (0.76) | 117.3 (4.62) | Blue |
| TCSL-500-U | 500 | 21.1 (0.83) | 124.7 (4.91) | Brown |
| TCSL-600-U | 600 | 23.4 (0.92) | 148.6 (5.85) | Green |
| TCSL-750-U | 750 | 26.2 (1.03) | 162.1 (6.38) | Black |
| TCSL-1000-U | 1000 | 29.7 (1.17) | 176.5 (6.95) | White |

LONG BARREL (METRIC CONDUCTORS)

| Description | Conductor mm ² | Dimensions in mm (in) | | Color Code |
|-------------|---------------------------|-----------------------|--------------|------------|
| | | A Ø | J | |
| TCSL-10M-U | 10 | 4.5 (0.18) | 22.0 (0.87) | Red |
| TCSL-16M-U | 16 | 5.4 (0.21) | 44.0 (1.73) | Blue |
| TCSL-25M-U | 25 | 6.8 (0.27) | 47.0 (1.85) | Gray |
| TCSL-35M-U | 35 | 8.2 (0.32) | 47.0 (1.85) | Brown |
| TCSL-50M-U | 50 | 10.0 (0.39) | 47.0 (1.85) | Pink |
| TCSL-70M-U | 70 | 11.3 (0.44) | 50.0 (1.97) | Black |
| TCSL-95M-U | 95 | 13.5 (0.53) | 54.0 (2.13) | Orange |
| TCSL-120M-U | 120 | 15.0 (0.59) | 65.0 (2.56) | Purple |
| TCSL-150M-U | 150 | 16.5 (0.65) | 65.0 (2.56) | White |
| TCSL-185M-U | 185 | 18.5 (0.73) | 65.0 (2.56) | Red |
| TCSL-240M-U | 240 | 21.0 (0.83) | 89.0 (3.50) | Brown |
| TCSL-300M-U | 300 | 23.5 (0.93) | 89.0 (3.50) | Green |
| TCSL-400M-U | 400 | 28.5 (1.12) | 90.0 (3.54) | Black |
| TCSL-500M-U | 500 | 30.0 (1.18) | 115.0 (4.53) | White |

Physical & Electrical Properties

Material : ETP copper alloy C11000
 Plating : Electro tin plate
 Heat treating : Soft tempered
 Voltage rating : For applications up to 35 kV
 Agency approvals : Listed by Underwriters Laboratories, Inc. (When crimped with the approved die sets)



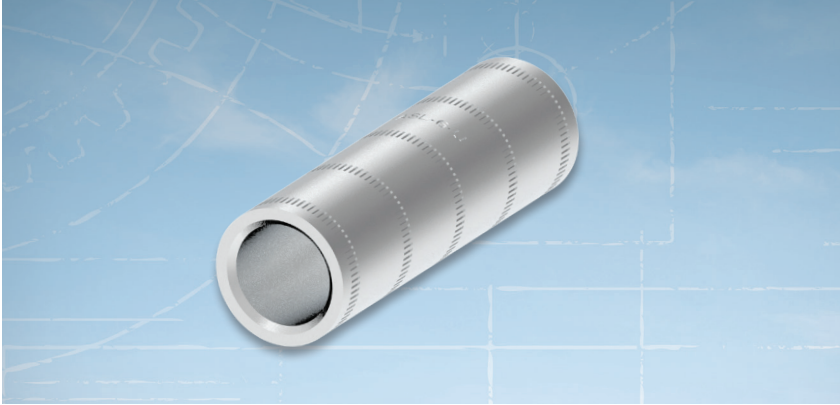
FILE NO. : E1328



FILE NO. : K3111-17-N/7564



Dual Rated Aluminum Crimp Splices



TE's Dual Rated Aluminum Crimp Splices are designed on high conductivity aluminum. The Dual Rated Aluminum Crimp Splices are electro-tin plated to resist electrolytic corrosion. They are suitable in applications from 600 V to 35 kV.

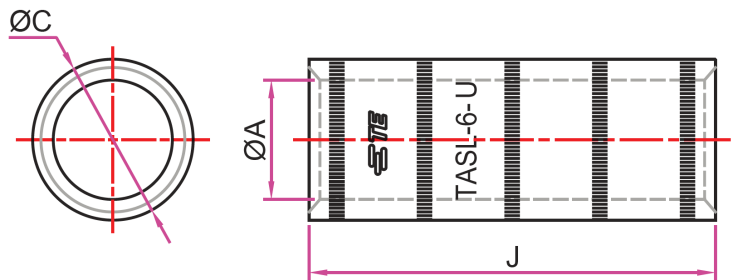
Compression splices are available to accommodate a broad range of cable sizes from #1/0 AWG to 750 kmcil in both copper and aluminum material, in one- or two-hole configuration.

The barrels are chamfered, or chant edged, for easy entry of the conductor. Also, they are pre-filled with oxide inhibitor compound to prevent contamination. The long barrel length provides extra contact with the conductor, post crimping. Every barrel cap is color-coded to the proper die for error-free die selection. It prevents the inhibitor from getting contaminated before installation.

Key Features

- Easy to install with industry standard tooling
- Electro tin-plated for electrolytic corrosion resistance and durability
- Industry standard, color coded barrel ends and caps simplify die selection and prevent contamination of Oxide-Inhibiting compound
- For 600 V to 35 kV applications
- Suitable with both aluminum and copper conductors

Copper And Aluminum Compression Splices



ALUMINUM COMPRESSION SPLICES

| Description | Conductor AWG/MCM | Dimensions mm (inch) | | | | | |
|-------------|----------------------|----------------------|------|---------------|------|------------------|-------|
| | | A (Internal Dia) | | C (Outer Dia) | | J (Total Length) | |
| TASL-6-U | 6 AWG | (5.1) | 0.2 | (0.35) | 8.8 | (1.62) | 41.1 |
| TASL-4-U | 4 AWG | (6.7) | 0.26 | (0.47) | 11.9 | (2.12) | 53.8 |
| TASL-2-U | 2 AWG | (7.8) | 0.31 | (0.53) | 13.5 | (2.0) | 50.8 |
| TASL--1-U | 1 AWG | (8.9) | 0.35 | (0.53) | 13.5 | (2.0) | 50.8 |
| TASL-1/0-U | 1/0 AWG | (10.5) | 0.41 | (0.64) | 16.3 | (2.12) | 53.8 |
| TASL-2/0-U | 2/0 AWG | (11.2) | 0.44 | (0.69) | 17.5 | (2.31) | 58.7 |
| TASL-3/0-U | 3/0 AWG | (12.3) | 0.48 | (0.76) | 19.3 | (2.62) | 66.5 |
| TASL-4/0-U | 4/0 AWG | (13.7) | 0.54 | (0.87) | 22.2 | (2.75) | 69.9 |
| TASL-250-U | 250 MCM | (15.1) | 0.59 | (0.91) | 23 | (2.94) | 74.7 |
| TASL-300-U | 300 MCM | (16.5) | 0.65 | (1.01) | 25.7 | (3.12) | 79.2 |
| TASL-350-U | 350 MCM | (18.3) | 0.72 | (1.11) | 28.1 | (3.38) | 85.8 |
| TASL-500-U | 500 MCM | (21.4) | 0.84 | (1.32) | 33.5 | (3.88) | 98.6 |
| TASL-600-U | 600 MCM | (23.4) | 0.92 | (1.44) | 36.5 | (4.12) | 104.6 |
| TASL-750-U | 750 MCM | (26.2) | 1.03 | (1.50) | 38.1 | (4.68) | 118.8 |



FILE NO. : E1328 FILE NO. : K3111-17-N/7564

te.com/energy

©2020 TE Connectivity. All Rights Reserved. EPP-0043-BRO-02/20

TE Connectivity and TE connectivity (logo) are trademarks. Other logos, product and/or company names might be trademarks of their respective owners. While TE has made every reasonable effort to ensure the accuracy of the information in this brochure, TE does not guarantee that it is error-free, nor does TE make any other representation, warranty or guarantee that the information is accurate, correct, reliable or current. TE reserves the right to make any adjustments to the information contained herein at any time without notice. TE expressly disclaims all implied warranties regarding the information contained herein, including, but not limited to, any implied warranties of merchantability or fitness for a particular purpose. The dimensions in this catalog are for reference purposes only and are subject to change without notice. Specifications are subject to change without notice. Consult TE for the latest dimensions and design specifications.

FOR MORE INFORMATION: TE Technical Support Centers

USA/Canada: +1 800-327-6996
 Brazil: +55 11-2103-6023
 Mexico: +52 55-1106-0800
 South America: +57 1-319-8962