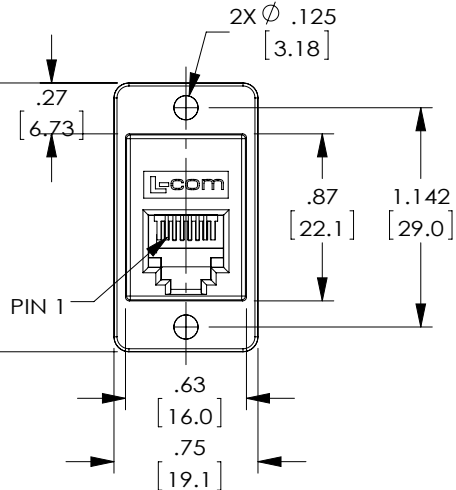


THE INFORMATION CONTAINED IN THIS DRAWING IS THE SOLE PROPERTY OF L-COM, INC.. ANY REPRODUCTION IN PART OR WHOLE WITHOUT THE WRITTEN PERMISSION OF L-COM, INC. IS PROHIBITED.

REVISIONS			
REV	DESCRIPTION	DATE	APPROVED
A	CN INITIAL RELEASE	10/27/17	D.CUI



"J1"
RJ12 JACK
(6P6C)

WIRING MAP	
"J1"	"J2"
1	1
2	2
3	3
4	4
5	5
6	6

NOTES:

MATERIAL:

HOUSING:ABS,UL94V-0,COLOR:BLACK
CONTACTS:PHOSPHOR BRONZE
CONTACT PLATING:GOLD, 30 μ INCHES OVER NICKEL PLATING.

ELECTRICAL:

CURRENT RATING:2 AMPS (MAX.)
VOLTAGE RATING:140 VDC

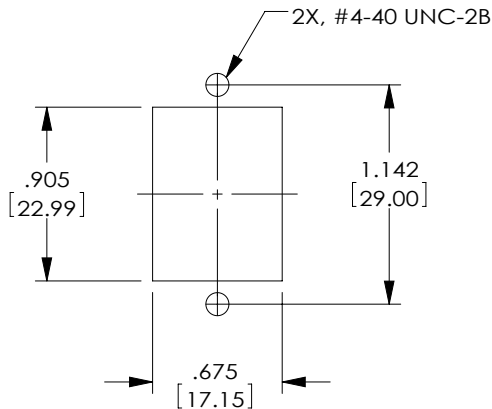
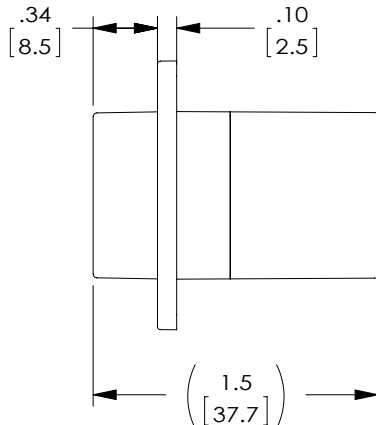
MISCELLANEOUS:

ALL DIMENSIONS SHOWN ARE FOR REFERENCE ONLY.
OPERATING TEMPERATURE RANGE:-10 °C TO +70 °C.
RATING APPLICATION: CATEGORY 3

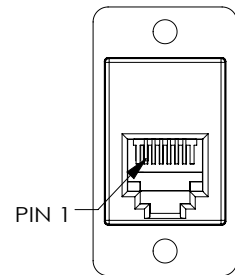
COMPONENT SHALL BE INDIVIDUALLY PACKAGED IN
ACCORDANCE WITH L-COM SPECIFICATION PS-0031.

REGULATORY COMPLIANCE:

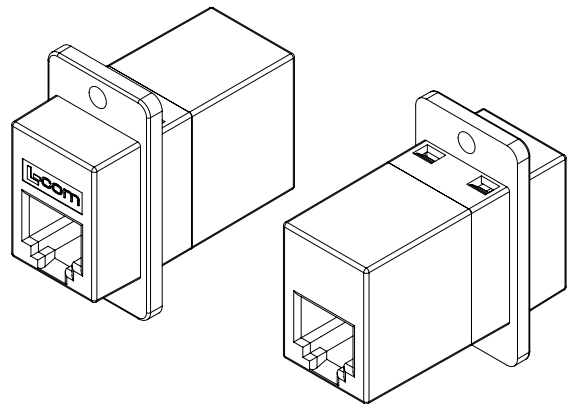
CE2011/65/EU(ROHS DIRECTIVE)


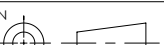


RECOMMENDED
PANEL CUTOUT



"J2"
RJ12 JACK
(6P6C)



UNLESS OTHERWISE SPECIFIED, DIMENSIONS ARE IN INCHES [mm] OVERALL CABLE LENGTH TOLERANCE: ≤12 [305] = +1 [25] / -0 >12 [305] ≤60 [1524] = +2 [51] / -0 >60 [1524] ≤120 [3048] = +4 [102] / -0 >120 [3048] ≤300 [7620] = +6 [152] / -0 >300 [7620] = +3% / -0% ALL OTHER DIMENSIONAL TOLERANCES: .X = ± .2 [5.08] .XX = ± .02 [1.51] .XXX = ±.005 [1.13]	APPROVALS	DATE	 50 HIGH STREET NORTH ANDOVER, MA 01845		
	DRAWN BY D.CUI	07/04/17			
	CHECKED BY S.PAN	07/04/17	CATEGORY	TELECOM/MODULAR	
	APPROVED BY D.GUTTADAURO	07/04/17	PRODUCT DESCRIPTION		CPLR PNL MNT 6X6 STRAIGHT BLK
<div>PROJECTION</div> 	CONFIGURATION DETAILS OF UNDIMENSIONED FEATURES MAY VARY	SIZE	FSCM NO.	DWG. NO.	REV.
		A	43321	ECF5046S-BK	A
	SCALE: NONE		CAD FILE: ECF5046S-BK.SLDRW		SHEET 1 OF 1