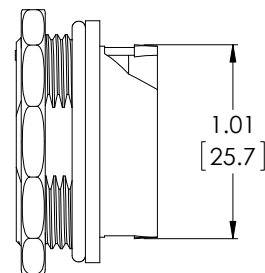
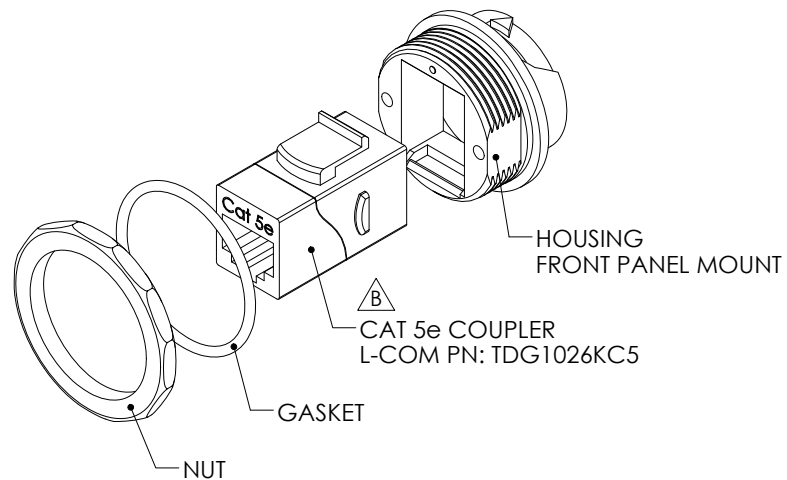
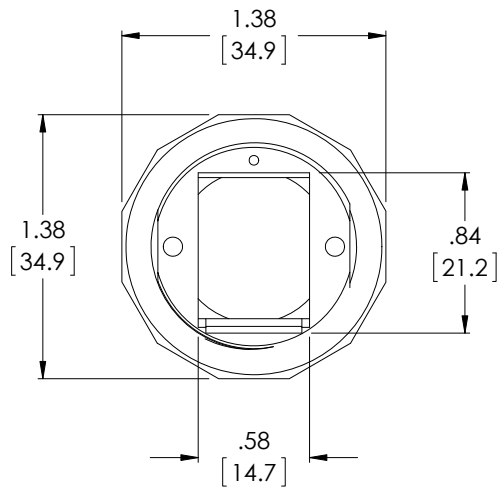
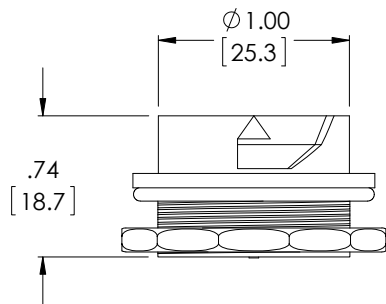
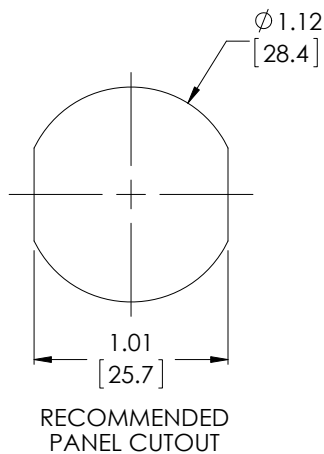


THE INFORMATION CONTAINED IN THIS DRAWING IS THE SOLE PROPERTY OF L-COM, INC. ANY REPRODUCTION IN PART OR WHOLE WITHOUT THE WRITTEN PERMISSION OF L-COM, INC. IS PROHIBITED.

| REVISONS | | | |
|----------|---|----------|--------------|
| REV | DESCRIPTION | DATE | APPROVED |
| A | INITIAL RELEASE | 4/13/07 | C. BERUBE |
| B | ECN 7129: UPDATED FORMAT, PACKAGING, ROHS, AND PICTORALLY | 10/31/13 | D. DESJARDIN |
| | | | |
| | | | |





NOTES:

MATERIAL:
HOUSING: THERMOPLASTIC
NUT: STEEL
GASKET: RUBBER

MISCELLANEOUS:
ASSEMBLY SHALL BE INDIVIDUALLY PACKAGED UNASSEMBLED IN ACCORDANCE WITH L-COM SPECIFICATION PS-0031.

ALL DIMENSIONS ARE FOR REFERENCE ONLY.

REGULATORY COMPLIANCE:
CE2011/65/EU(RoHS DIRECTIVE)

| | | | | | | |
|---|---------------------------|------------------|--|------------------------------|---------------------------------|--|
| UNLESS OTHERWISE SPECIFIED, DIMENSIONS ARE IN INCHES [mm] OVERALL CABLE LENGTH TOLERANCE: ≤12 [305] = +1 [25] / -0 >12 [305] ≤60 [1524] = +2 [51] / -0 >60 [1524] ≤120 [3048] = +4 [102] / -0 >120 [3048] ≤300 [7620] = +6 [152] / -0 >300 [7620] = +5% / -0% ALL OTHER DIMENSIONAL TOLERANCES: .X = ±.2 [5.08] .XX = ±.02 [5.1] .XXX = ±.005 [1.3] PROJECTION  | APPROVALS | DATE |  45 BEECHWOOD DRIVE NORTH ANDOVER, MA 01845 | | CATEGORY TELECOM/MODULAR | |
| | DRAWN BY C. BERUBE | 2/21/07 | | | | |
| | CHECKED BY J. ROBERTS | 4/13/07 | PRODUCT DESCRIPTION COUPLER, IP67 FLANGE C5E RJ45 | | | |
| | APPROVED BY J. ROBERTS | 4/13/07 | | | | |
| CONFIGURATION DETAILS OF UNDIMENSIONED FEATURES MAY VARY | | SIZE A | FSCM NO. 43321 | DWG. NO. WT67KC5FM | REV. B | |
| COLOR VARIATIONS MAY OCCUR | | SCALE: NONE | CAD FILE: WT67KC5FM.SLDDRW | | SHEET 1 OF 1 | |