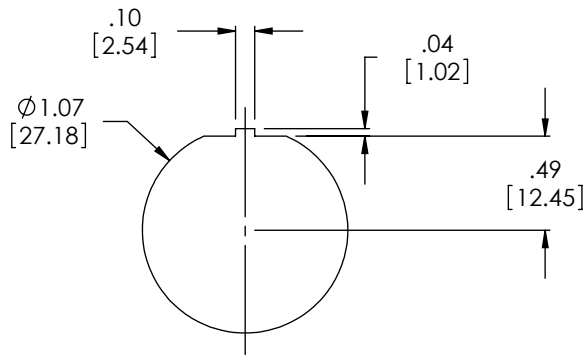
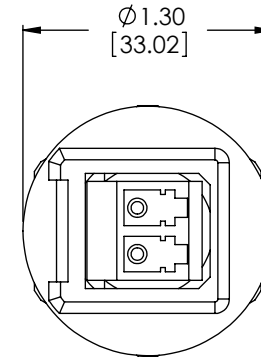
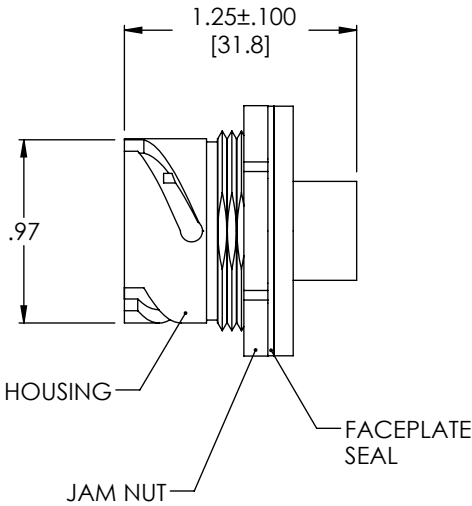
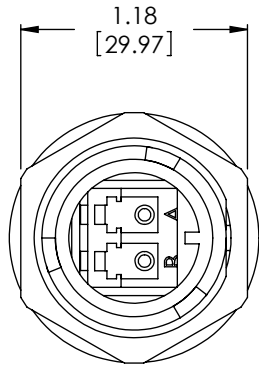


THE INFORMATION CONTAINED IN THIS DRAWING IS THE SOLE PROPERTY OF L-COM, INC. ANY REPRODUCTION IN PART OR WHOLE WITHOUT THE WRITTEN PERMISSION OF L-COM, INC. IS PROHIBITED.

| REVISIONS | | | |
|-----------|---|---------|-----------|
| REV | DESCRIPTION | DATE | APPROVED |
| A | INITIAL RELEASE | 1/26/12 | D.GRIFFIN |
| B | ECN 7817: ADDED GRIP RIBS, REMOVED GASKET | 2/20/15 | D. CASTRO |
| | | | |
| | | | |



RECOMMENDED PANEL OPENING

PANEL THICKNESS: .035" - .120"

NOTES:

1. MATERIAL:
JACK HOUSING; GLASS FILLED PBT
ALIGNMENT SLEEVE; CERAMIC

2. PANEL NUT MUST BE TIGHTENED 15-20 IN. LBS

INDIVIDUALLY PACKAGE IN ACCORDANCE WITH L-COM SPECIFICATION PS-0031

REGULATORY COMPLIANCE:
CE2011/65/EU (RoHS DIRECTIVE)

| | | | |
|---|---|--|---|
| UNLESS OTHERWISE SPECIFIED, DIMENSIONS ARE IN INCHES [mm] OVERALL CABLE LENGTH TOLERANCE: ≤12 [305] = +1 [25] / -0 >12 [305] ≤60 [1524] = +2 [51] / -0 >60 [1524] ≤120 [3048] = +4 [102] / -0 >120 [3048] ≤300 [7620] = +6 [152] / -0 >300 [7620] = +3% / -0% ALL OTHER DIMENSIONAL TOLERANCES: .X = ±.2 .XX = ±.02 .XXX = ±.005 | APPROVALS DRAWN BY D.PARHAM CHECKED BY J.RUST APPROVED BY D.GALLAGHER | DATE 01/17/2012 01/24/2012 01/25/2012 | 45 BEECHWOOD DRIVE NORTH ANDOVER, MA 01845 |
| | CONFIGURATION DETAILS OF UNDIMENSIONED FEATURES MAY VARY | | |
| PROJECTION | COLOR VARIATIONS MAY OCCUR | SIZE A | FSCM NO. 43321 DWG. NO. XLC-SM |
| SCALE: NONE | | CAD FILE: XLC-SM.SLDDRW | REV. B SHEET 1 OF 1 |