

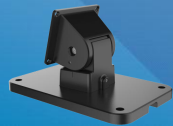
ECL-THF

2MP HD Face Recognition Camera Terminal with Temperature Alert

ECL-122R Power Supply Included



*Optional ECL-THB Desktop Mount



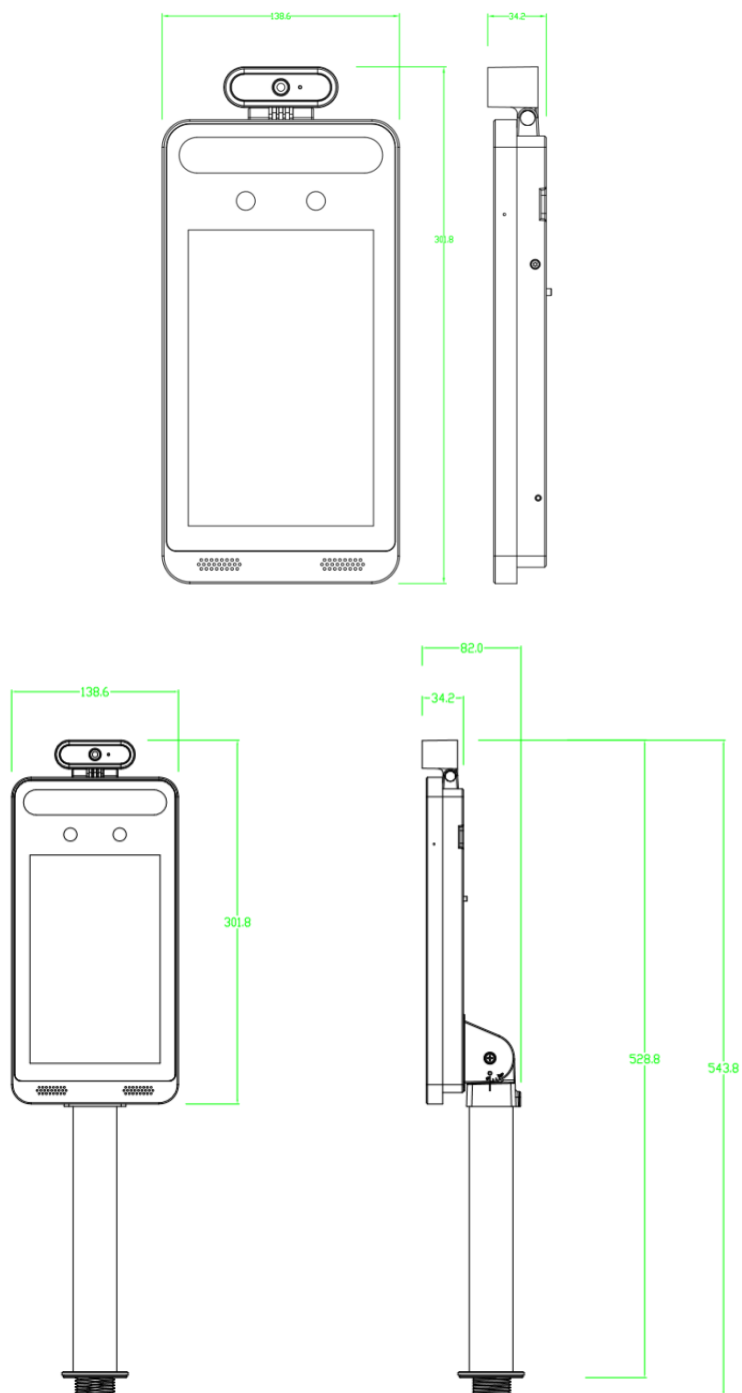
- 8 inch LCD screen
- Provides highly accurate infrared body temperature measurement
- Able to identify and alert when user is not wearing a mask
- Audible alerts provided when abnormal body temperature and/or no mask are detected
- No temperature = no access, system cannot be fooled by a picture or video
- Deep learning algorithm allows for high face recognition accuracy rate
- Supports 1:N recognition mode
- Cameras designed for face recognition in order provide high accuracy even in less-than-ideal lighting conditions
- Tamper alarm support
- Stand-alone operation, or tie into PC software for additional features
- Remote live viewing and two-way audio supported
- 1 Year Manufacturers Warranty

Specifications

Model	ECL-THF
Performance	
OS	Embedded Linux
Storage	8GB DDR3 +16GB EMMC
Screen	
Display Screen	8inch LCD screen; resolution: 1280x800; contrast: 500:1
Brightness	500 lux
Control Interface	I2C
Temperature Measurement	
Temperature Measuring Range	0~50°C (32~122° F)
Accuracy	± 0.3°C
Measuring Distance	0.3~0.5m (11.8"~19.7")
Face Recognition Camera	
Sensor	1/2.7
Lens	2MP dual-lens, f=3.97mm @ F1.6
Lens Mount	M12
WDR	120dB
Height Range of Face Recognition	1.2m~2.2m (3.9'~7.2'); the recommended installation height is 1.45m (4.7')
Face Recognition Distance	0.3m~2m (1'~ 6.5')
Recognition Mode	Face: 1 : N
Recognition Duration	≤ 0.5s per person
Face Capacity	20,000
Recognition Accuracy	99.7%
Supplementary Light	
Fill-in Light	Soft white light, IR light
White Light Distance	1~3m (3.3'~9.8')
Smart Linkage	
Screen Wakeup	Yes
Light Adjustment	Yes
Snapshot	Yes
Audio	

Two-way Talk	Yes (noise reduction and echo cancellation)
Audio Input	1CH built-in MIC
Audio Output	Built-in speaker
Interface	
Network Interface	10/100Mbps self-adaptive Ethernet port x1
Alarm Input	2CH
Alarm Output	2CH
Wiegand Interface	Wiegand input/output (26/34)
RS485	RS485x1 (half duplex)
Door Lock Output	Relay output, NO/NC(optional), delay setting supported
SD Card Interface	1 micro SD card slot, up to 128G
USB Interface	USB x1
Anti-Tamper Interface	1 button
Exit Button	1
Reset Button	1
Others	
Power	12V @1A
Power Management	Screen standby mode, screen protection
Power Consumption	<12W
Weight	Approx. 1.2KG (2.65lbs)
Installation	Wall Mounting , Pole Mounting, Embedded Installation, Desktop
Protection	IP66, Surge Protection and Voltage Transient Protection
Working Environment	-20°~60° C (4°~140° F) , <95% (non-condensing)
Dimensions(mm)	301.8mm x138.6mm x 34.2mm (11.9" x 5.5" x 1.35")

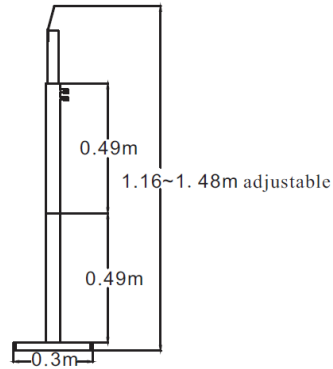
Dimensions



(Note: Pole mounting bracket is optional)



ECL-THFS Floor-Standing Mount

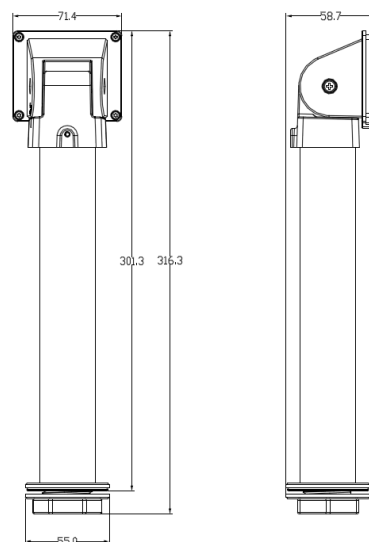


Features

- Material : Aluminum alloy and plastics
- Floor-standing mounting bracket for face recognition (& temperature measurement) terminal



ECL-THFP Pole Mounting Bracket



Features

- Aluminum alloy material with surface spray treatment
- Turnstile integrated bracket for face recognition (& temperature measurement) terminal