

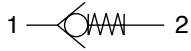
**Permit free flow of air in one direction only**

**Simple, reliable design**

**Silicone free**

**Low cracking pressure**

**T56 male connections have an O-ring in parallel threads**



**Technical data**

**Medium:**

Compressed air, filtered,  
 lubricated and non-lubricated

**Operating pressure:**

1.5 to 145 psig (0.1 to 10 bar)

**Operating temperature:**

0°F to 175°F\* (-20°C to +80°C)  
 \*Consult our Technical Service for use  
 below 35°F (+2°C)

**Materials**

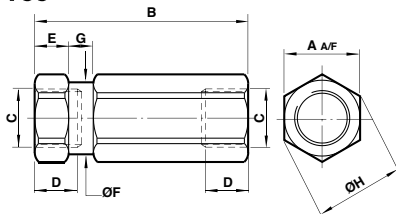
Body: aluminum (T55),  
 brass (T56)  
 O-ring: nitrile rubber  
 Valve: POM  
 Spring: stainless steel  
 Note: FPM seals for high  
 temperature version

**T55 Series**

Port Size	Flow Factor Cv**	Cracking pressure	Weight oz	Model	
				NPT	BSPP
1/8	0.59	0.73	0.53	T55A1800	T55C1800
1/4	1.35	0.73	0.88	T55A2800	T55C2800
3/8	2.20	0.73	2.12	T55A3800	T55C3800
1/2	3.70	0.73	2.82	T55A4800	T55C4800

\*\* Cv measured in US gal/min.

**T55**

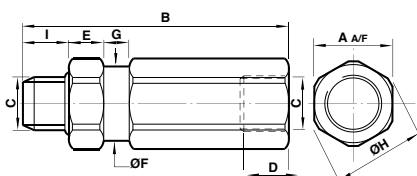


Model	A	B	C	D	E	F	G	H
T55A1800	0.55	1.67	1/8	–	0.28	0.54	0.16	0.59
T55C1800	0.55	1.67	1/8	0.28	0.28	0.54	0.16	0.59
T55A2800	0.67	2.13	1/4	–	0.31	0.66	0.20	0.73
T55C2800	0.67	2.13	1/4	0.41	0.31	0.66	0.20	0.73
T55A3800	0.94	2.48	3/8	–	0.35	0.93	0.28	1.02
T55C3800	0.94	2.48	3/8	0.47	0.35	0.93	0.28	1.02
T55A4800	1.06	3.03	1/2	–	0.47	1.05	0.39	1.18
T55C4800	1.06	3.03	1/2	0.59	0.47	1.05	0.39	1.18

**T56 Series**

Port Size	Flow Factor Cv**	Cracking pressure	Weight oz	Model	
				NPT	BSPP
1/8	0.59	0.73	1.59	T56A1800	T56C1800
1/4	1.23	0.73	2.82	T56A2800	T56C2800

\*\* Cv measured in US gal/min.



Model	A	B	C	D	F	G	H	I
T56A1800	0.55	1.93	1/8	–	0.54	0.16	0.59	0.37
T56C1800	0.55	1.77	1/8	0.28	0.54	0.16	0.59	0.22
T56A2800	0.67	2.46	1/4	–	0.66	0.20	0.73	0.56
T56C2800	0.67	2.21	1/4	0.41	0.66	0.20	0.73	0.31