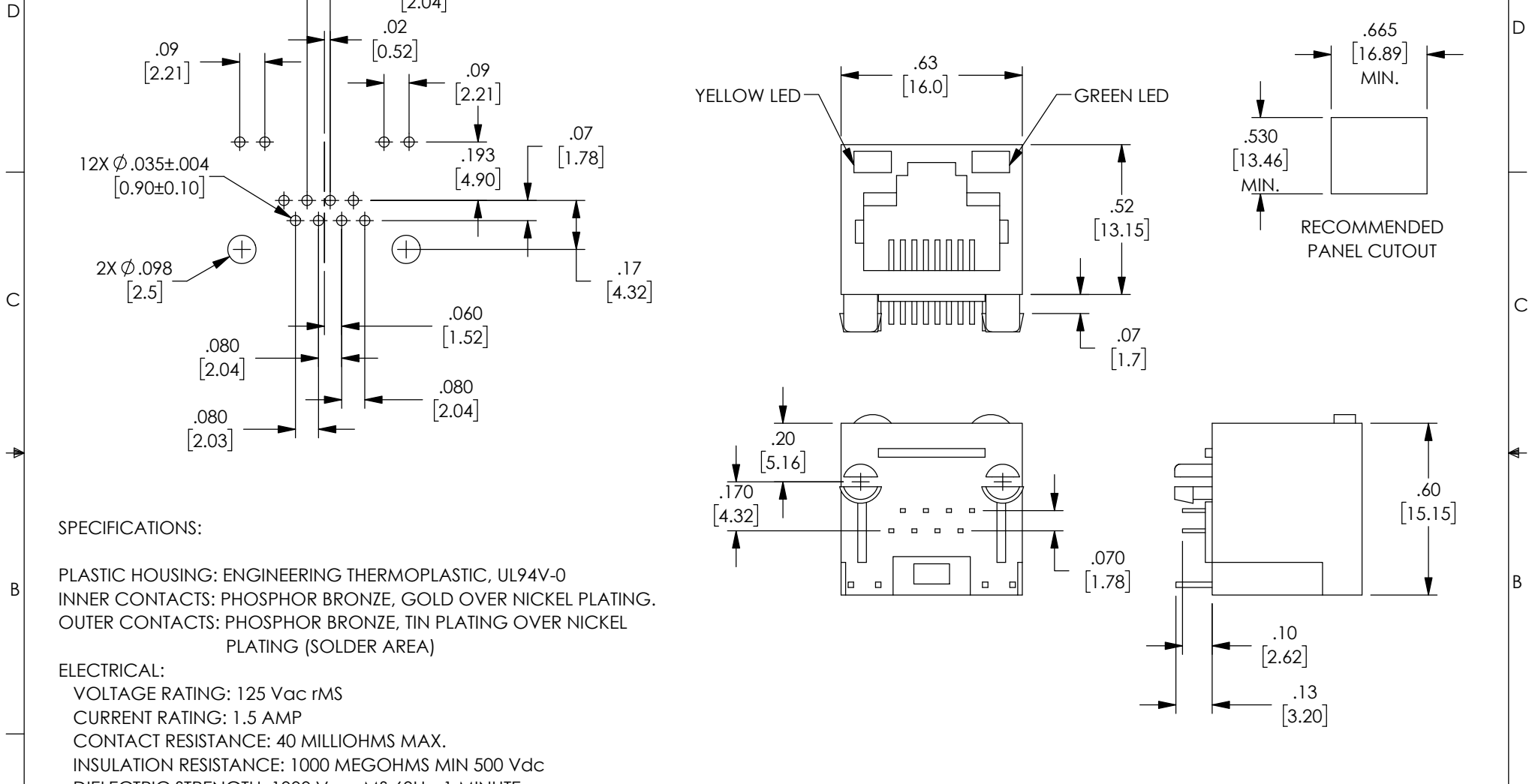


THE INFORMATION CONTAINED IN THIS DRAWING IS THE SOLE PROPERTY OF L-COM, INC. ANY REPRODUCTION IN PART OR WHOLE WITHOUT THE WRITTEN PERMISSION OF L-COM, INC. IS PROHIBITED.

REVISIONS			
REV	DESCRIPTION	DATE	APPROVED
A	INITIAL RELEASE	01/09/2020	GUTTADAURO



**SPECIFICATIONS:**

PLASTIC HOUSING: ENGINEERING THERMOPLASTIC, UL94V-0  
 INNER CONTACTS: PHOSPHOR BRONZE, GOLD OVER NICKEL PLATING.  
 OUTER CONTACTS: PHOSPHOR BRONZE, TIN PLATING OVER NICKEL PLATING (SOLDER AREA)

**ELECTRICAL:**

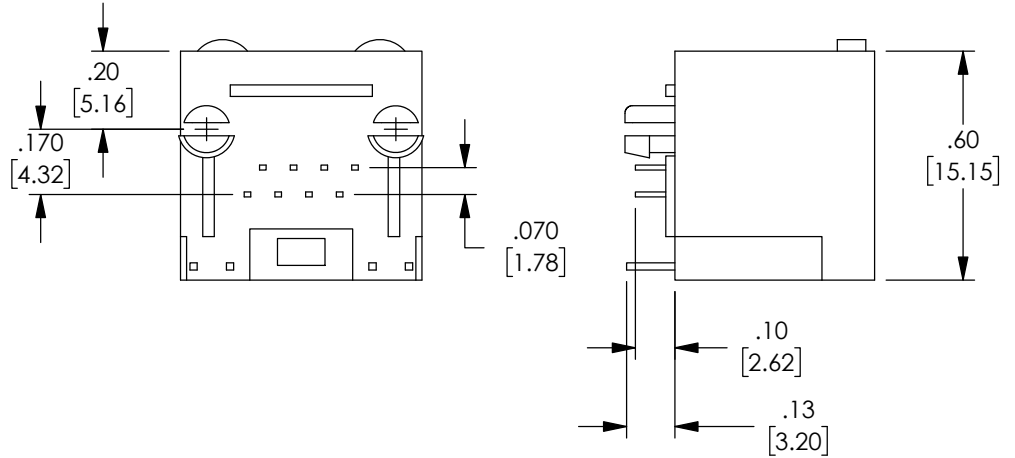
VOLTAGE RATING: 125 Vac rMS  
 CURRENT RATING: 1.5 AMP  
 CONTACT RESISTANCE: 40 MILLIOHMS MAX.  
 INSULATION RESISTANCE: 1000 MEGOHMS MIN 500 Vdc  
 DIELECTRIC STRENGTH: 1000 Vac rMS 60Hz, 1 MINUTE


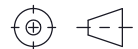
**MECHANICAL:**

MATING: 750 CYCLES MIN.  
 STORAGE TEMPERATURE: -40 °C TO +85 °C  
 OPERATING TEMPERATURE: -20 °C TO +75 °C

**NOTES:**

- ALL DIMENSIONS ARE FOR REFERENCE ONLY.
- COMPONENT SHALL BE INDIVIDUALLY PACKAGED IN ACCORDANCE WITH L-COM SPECIFICATION PS-0031.



UNLESS OTHERWISE SPECIFIED, DIMENSIONS ARE IN INCHES [mm] OVERALL CABLE LENGTH TOLERANCE: ≤12 [305] = +1 [25] / -0 >12 [305] ≤60 [1524] = +2 [51] / -0 >60 [1524] ≤120 [3048] = +4 [102] / -0 >120 [3048] ≤300 [7620] = +6 [152] / -0 >300 [7620] = +5% / -0 ALL OTHER DIMENSIONAL TOLERANCES: .X = ± .2 [5]   FRACTIONS ± 1/32 .XX = ± .02 [.5]   ANGLES ± 1° .XXX = ± .005 [.13]	APPROVALS DRAWN BY DFRISIELLO CHECKED BY GUTTADAURO APPROVED BY GUTTADAURO	DATE 01/09/2020	 an INFINITO brand 50 High Street, West Mill, North Andover, MA 01845 USA. Phone: 1.800.341.5266 1.978.682.6936	
	CONFIGURATION DETAILS OF UNDIMENSIONED FEATURES MAY VARY COLOR VARIATIONS MAY OCCUR	CATEGORY <b>TELECOM/MODULAR</b>		PRODUCT DESCRIPTION <b>RJ45 Surface Mount Jack 90°, LED, Black</b>
THIRD-ANGLE PROJECTION 	SIZE <b>A</b>	CAGE CODE <b>43321</b>	DWG. NO. <b>SMJ-RJ4590-LED</b>	REV. <b>A</b>
SCALE: NONE		CAD FILE: SMJ-RJ4590-LED.SLDDRW		SHEET 1 OF 1