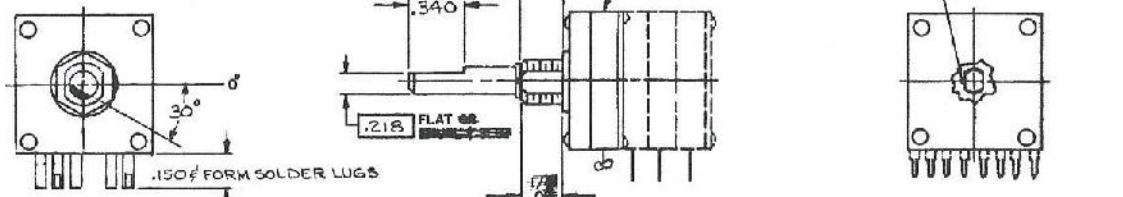


STANDARD GRIGSBY

920 RATHBONE AVENUE
AURORA, ILL. 60507

TYPE MMP/REL
15 POSITIONS

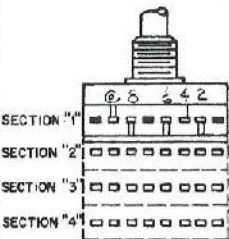
PARALLEL SHAFT MOUNTING
(RELATIVE TO PC BOARD)



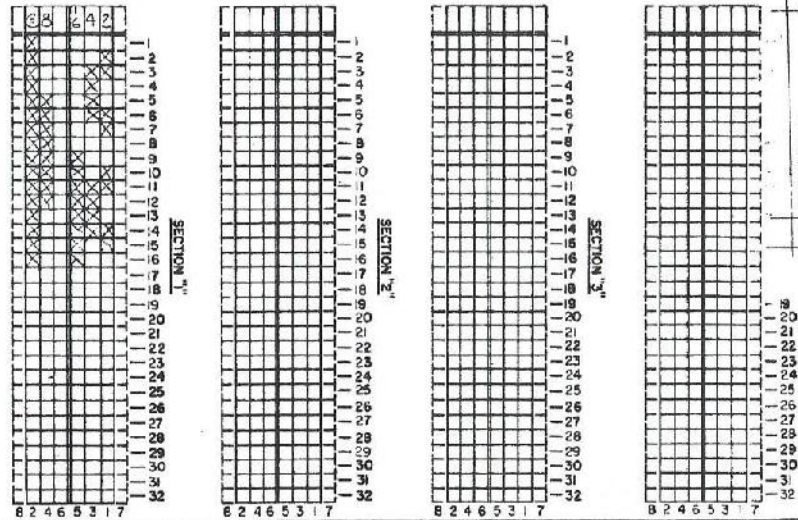
SWITCH SHOWN IN EXTREME
CCW POSITION. SHOW CUTAWAY
PORTION OF SHAFT IN BLACK.

24-1610/0220

FOOTPRINT VIEWED FROM
TOP OF SWITCH



CUTAWAY TERMINALS SHOWN
IN BLACK



ECN 3041
L 24-1610/0220
K CHANGE * STAMP
TO * LABEL
NO. 95881602

215 MMP/REL 18-1
DATE 4-16-84
JEM DRAWN
C/AGP
SPEC. NO. 215 MMP/REL 18-1
CUSTOMER ALLEN BRADLEY

CUST. ALLEN BRADLEY
PART NO. 95881602 /NO2
STAMP NO. 95881602

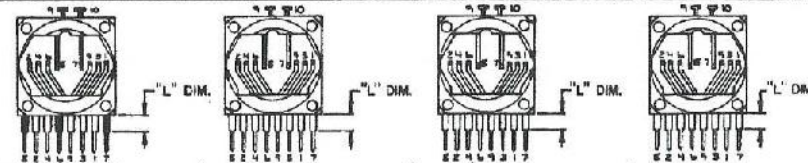
- TOTAL NO. OF SECTIONS
- NO. OF POSITIONS WITH STOPS
- SHORTING CONTACTS
- NON-SHORTING CONTACTS
- NON-SHORTING POSSIBLE UP TO "16" POSITIONS

SUPPLY:
NUTS 3/8" 32 X 3/4"
3/8" INT. TOOTH LOCKWASHER
SPECIAL INSTRUCTIONS
COMMON TERMINAL PIN
"X" or "B" DENOTES CLOSED TO COMMON
GOLD & CONTACT & ROTOR DISCS.
* LABEL CUST. NO. 95881602.
SEAL PER 17-0001/0530.
USE (11/0010 & 11/0020) SPRING PER
SIDE.
MOUNTING HARDWARE TO BE PLACED IN
PLASTIC BAG & HEAT SEALED. PLACE
THIS BAG IN COMPLETED SWITCH IN
ANOTHER PLASTIC BAG & HEAT SEAL.

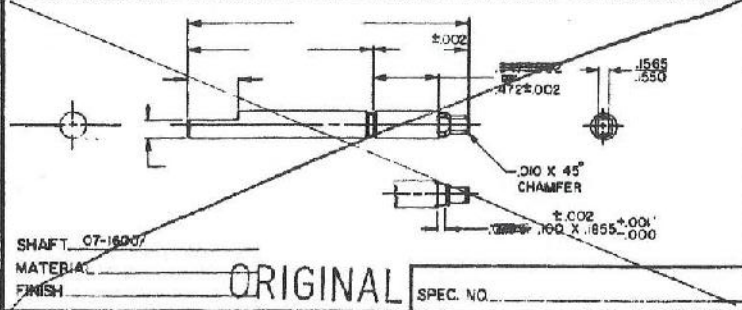
REVISIONS	DATE	BY	DESCRIPTION
LET			WAS
A			SHAFT FLAT WAS AT 0°
B			ADDED ROTOR DISC. NO.
C			ADDED (2) /0020 SPRINGS
D			REVISED STAMP CUST. NO.
E			REVISED SHAFT DIMS.
F			ADDED 2 /0020 SPRINGS
G			ADDED 2 /0020 SPRINGS
H			ADDED 2 /0020 SPRINGS
I			ADDED 2 /0020 SPRINGS
J			ADDED 2 /0020 SPRINGS
K			ADDED 2 /0020 SPRINGS

ORDER NO.	
QUANTITY PER ORDER	

VIEWED FROM REAR,
BALL FORM UP



PART NUMBER 02-1600/1730
"A" PARTED OPTIONAL
"L" DIMENSION .150 SOLDER LUGS
TRIM CONTACT NUMBER 7 & 8
TRIM TERMINAL NUMBER 6, 7, 8, 9, 10
FORM SOLDER LUGS



ORIGINAL

SPEC. NO.