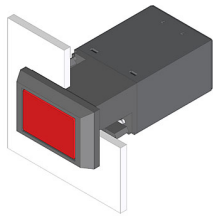


# EAO – Your Expert Partner for Human Machine Interfaces

## 22-215.011 - Illuminated pushbutton actuator

### 22-215.011 - Illuminated pushbutton actuator



*Attention: The preview is based on a sample product. This can differ from your current configuration.*

#### Mounting

Mounting cut-out Design 22 mm x 30 mm  
flush

#### Front

Front dimension 24 mm x 36 mm  
Front bezel colour black  
Front bezel material Plastic  
Front shape rectangular

#### Other Attributes

Weight 0,044 kg

#### Operating-/Indication part

Lens illumination

#### IP-Rating

Front protection IP65

#### Connection Method

Terminal Screw terminal

#### Actuator

Switching action Momentary  
Housing colour black  
Housing material Plastic

#### Switching element

Switching system Snap-action switching element  
Contacts 1 NC + 1 NO  
Switching voltage 400 V AC  
Switching current 10 A  
Contact material Silver

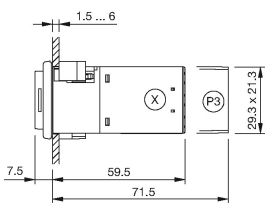
#### Function

Illuminated pushbutton

# EAO – Your Expert Partner for Human Machine Interfaces

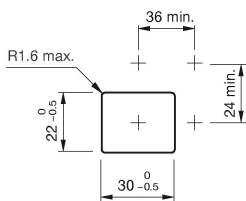
22-215.011 - Illuminated pushbutton actuator

## Dimensions

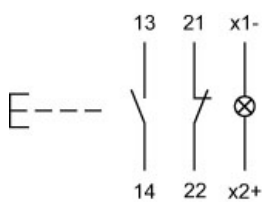


X = Screw terminal

## Mounting cut-outs



## Wiring diagram



## Legend

Contacts: NC = Normally closed, NO = Normally open  
Switching action: B = Momentary