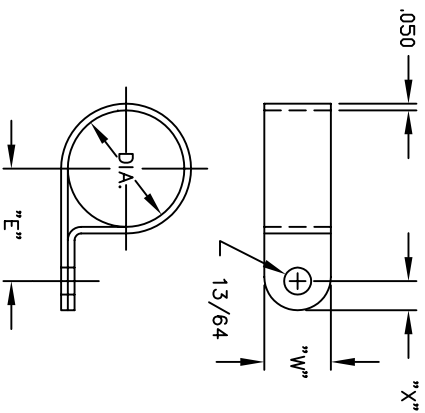


REVISIONS		REVISED BY	DATE	APPR
SYM	DESCRIPTION			

PART NO.	DIA.	"E"	"W"	"X"
8940	1/8	.315	1/2	1/4
8941	3/16	.423	1/2	7/32
8942	1/4	.457	1/2	7/32
8943	5/16	.495	1/2	7/32
8944	3/8	.529	1/2	7/32
8945	7/16	.560	1/2	7/32
8946	1/2	.592	1/2	7/32
8947	9/16	.623	1/2	7/32
8948	5/8	.654	1/2	7/32
8949	11/16	.752	1/2	7/32
8950	3/4	.783	1/2	7/32
8951	7/8	.845	1/2	7/32
8952	1	.908	1/2	7/32
8955	1/8	1/8	3/8	7/32
8956	3/16	.378	3/8	7/32
8957	1/4	.409	3/8	7/32
8958	5/16	.441	3/8	7/32
8959	3/8	.471	3/8	7/32
8960	7/16	.519	3/8	7/32
8961	1/2	.550	3/8	7/32



MATERIAL NYLON TYPE 6/6		FINISH	BLACK
DIMENSIONAL TOLERANCES UNLESS OTHERWISE SPECIFIED		TITLE	
.XX	.XXX	.XXX	8940 THRU 8952
---	----	----	8955 THRU 8961
FRACTIONS	ANGLES	SCALE	CABLE CLAMPS
----		NONE	
HEAT TREAT		DRAWN	B. FRANKLIN
PLUT SCALE	1=1	CHECKED	E. MCKINNEY
		APPROVED	D. MILLER
		DATE	1-3-90
		DATE	1-14-91
		DATE	1-14-91
		SIZE	B
		DRAWING NUMBER	SD: SMP00134
		ISSUE	C

**ABBATRON**  
Electronic Connectors and Hardware  
632 Arch Street, Meadville, Pa. 16335