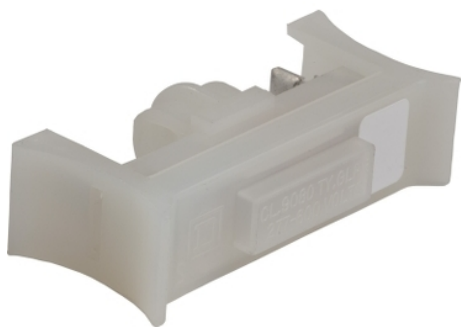


# Product data sheet

## Characteristics

# 9080GLP6

Linery terminal block, blown fuse indicator, 600 V, for 9080GF6 sectional fuse holder block



### Main

Range	9080G
Product	Blown Fuse Indicator
Quantity per set	Set of 10

### Complementary

Material	Nylon
Maximum Height	29.72 mm (1.17 in)
Maximum Width	16.26 mm (0.64 in)
Maximum Depth	60.96 mm (2.4 in)

### Ordering and shipping details

Category	21702 - 9080 G (NOT GCB)
Discount Schedule	CP5
GTIN	00785901489689
Package weight(Lbs)	0.03 lb(US) (0.01 kg)
Returnability	Yes
Country of origin	MX

### Offer Sustainability

California proposition 65	WARNING: This product can expose you to chemicals including: Lead and lead compounds which is known to the State of California to cause Carcinogen & Reproductive harm. For more information go to <a href="http://www.p65warnings.ca.gov">www.p65warnings.ca.gov</a>
REACH Regulation	<a href="#">REACH Declaration</a>
REACH free of SVHC	Yes
EU RoHS Directive	Compliant <a href="#">EU RoHS Declaration</a>
Toxic heavy metal free	Yes
Mercury free	Yes
RoHS exemption information	<a href="#">Yes</a>
China RoHS Regulation	<a href="#">China RoHS Declaration</a>

### Contractual warranty

Warranty	18 months
----------	-----------