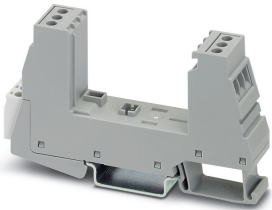



Type 3 surge protection base element - PLT-SEC-T3-BE-FM-UT - 2907924

Please be informed that the data shown in this PDF Document is generated from our Online Catalog. Please find the complete data in the user's documentation. Our General Terms of Use for Downloads are valid (<http://phoenixcontact.com/download>)

Base element for protective plugs from the PLT-SEC-...-UT/PT product series with remote indication contact.



Key Commercial Data

Packing unit	1 pc
GTIN	 4 055626 257709
GTIN	4055626257709
Weight per Piece (excluding packing)	52.000 g
Custom tariff number	85363030
Country of origin	Germany

Technical data

Dimensions

Height	93.4 mm
Width	17.7 mm
Depth	51.5 mm (incl. DIN rail 7.5mm)
Horizontal pitch	1 Div.

Ambient conditions

Degree of protection	IP20
Ambient temperature (operation)	-40 °C ... 80 °C
Ambient temperature (storage/transport)	-40 °C ... 80 °C
Altitude	≤ 2000 m (amsl (above mean sea level))
Permissible humidity (operation)	5 % ... 95 %

Type 3 surge protection base element - PLT-SEC-T3-BE-FM-UT - 2907924

Technical data

Ambient conditions

Shock (operation)	30g (Half-sine / 11 ms / 3x ±X, ±Y, ±Z)
Vibration (operation)	5g (5 ... 500 Hz / 2.5 h / X, Y, Z)

General

EN type	T2 / T3
IEC power supply system	TN-S
	TT
Number of ports	One
Mounting type	DIN rail: 35 mm
Color	light grey RAL 7035
	traffic grey A RAL 7042
Housing material	PA 6.6-FR 20% GF
	PA 6.6-FR
Degree of pollution	2
Flammability rating according to UL 94	V-0
Type	DIN rail module, two-section, divisible
Number of positions	2
Surge protection fault message	Remote indication contact

Protective circuit

Nominal voltage U_N	240 VAC (TN-S)
	240 VAC (TT)
Nominal frequency f_N	50 Hz (60Hz)
Maximum continuous voltage U_C	264 VAC
Rated load current I_L	26 A (at 30°C)
Short-circuit current rating I_{SCCR}	10 kA AC
Max. backup fuse with branch wiring	depends on the plug used
Maximum backup fuse for through wiring	25 A (gG / B / C)

Additional technical data

Short-circuit current rating I_{SCCR}	max. 5 kA DC (depends on the plug used)
Maximum continuous voltage U_C	240 VDC

Indicator/remote signaling

Switching function	PDT contact
Operating voltage	250 VAC
	125 VDC (200 mA DC)
Operating current	0.5 A AC
	0.5 ADC (75VDC)

Type 3 surge protection base element - PLT-SEC-T3-BE-FM-UT - 2907924

Technical data

Indicator/remote signaling

Connection method	Screw connection
Conductor cross section flexible	0.2 mm ² ... 2.5 mm ²
Conductor cross section solid	0.2 mm ² ... 2.5 mm ²
Conductor cross section AWG	30 ... 12
Screw thread	M3
Tightening torque	0.5 Nm
Stripping length	10 mm

Connection data

Connection method	Screw connection
Conductor cross section flexible	0.2 mm ² ... 2.5 mm ²
Conductor cross section solid	0.2 mm ² ... 4 mm ²
Conductor cross section AWG	24 ... 12
Screw thread	M3
Tightening torque	0.5 Nm
Stripping length	10 mm

UL specifications

SPD Type	ACC
Nominal voltage	240 VDC
Rated load current I _L	20 A
Power distribution system	Single phase
	DC
Nominal frequency	50/60 Hz

UL indicator/remote signaling

Operating voltage	250 VAC (0.5A)
	12 VDC (4 A)
	24 VDC (2A)
	48 VDC (1A)
Tightening torque	5 lb _F -in. ... 7 lb _F -in.
Conductor cross section AWG	30 ... 12

UL connection data

Conductor cross section AWG	16 ... 12
Tightening torque	4.4 lb _F -in.

Standards and Regulations

Standards/specifications	IEC61643-11 2011
	EN61643-11 2012

Type 3 surge protection base element - PLT-SEC-T3-BE-FM-UT - 2907924

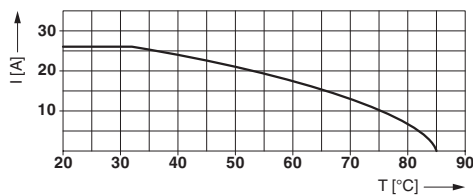
Technical data

Environmental Product Compliance

REACH SVHC	Lead 7439-92-1
China RoHS	Environmentally Friendly Use Period = 50 years
	For details about hazardous substances go to tab "Downloads", Category "Manufacturer's declaration"

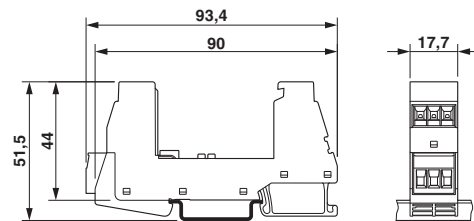
Drawings

Diagram

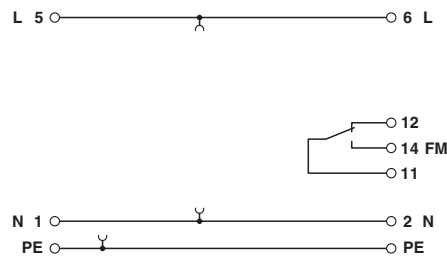


Nominal current depending on ambient temperature

Dimensional drawing



Circuit diagram



Classifications

eCl@ss

eCl@ss 10.0.1	27130803
eCl@ss 11.0	27130803
eCl@ss 6.0	27130800
eCl@ss 7.0	27130803
eCl@ss 8.0	27130803
eCl@ss 9.0	27130803

ETIM

ETIM 5.0	EC000472
ETIM 6.0	EC000472

Type 3 surge protection base element - PLT-SEC-T3-BE-FM-UT - 2907924

Classifications

ETIM

ETIM 7.0	EC000472
----------	----------

Approvals

Approvals

Approvals

DNV GL / CCA / UL Recognized / KEMA-KEUR / cUL Recognized / IECCEB Scheme / EAC / CSA / cULus Recognized


Ex Approvals

UL Recognized / cUL Recognized / cULus Recognized


Approval details


DNV GL		https://approvalfinder.dnvgl.com/	TAE00002U7
--------	---	---	------------

CCA			NTR-NL 7676
-----	--	--	-------------

UL Recognized		http://database.ul.com/cgi-bin/XYV/template/LISEXT/1FRAME/index.htm	FILE E 330181
---------------	---	---	---------------

KEMA-KEUR		http://www.dekra-certification.com	71-103027
-----------	---	---	-----------

cUL Recognized		http://database.ul.com/cgi-bin/XYV/template/LISEXT/1FRAME/index.htm	FILE E 330181
----------------	---	---	---------------

IECCEB Scheme		http://www.iecee.org/	NL-51083
---------------	---	---	----------

Type 3 surge protection base element - PLT-SEC-T3-BE-FM-UT - 2907924

Approvals

EAC			RU C-DE.*09.B.00169
-----	--	--	---------------------

CSA		http://www.csagroup.org/services-industries/product-listing/	70194378
-----	--	---	----------

cULus Recognized			
------------------	--	--	--

Accessories

Additional products

Type 3 surge protection plug - PLT-SEC-T3-24-P-UT/PT - 2907920



Replacement plug for type 3 surge protection from the PLT-SEC-...-UT/PT product series. Nominal voltage 24 V.

Type 3 surge protection plug - PLT-SEC-T3-60-P-UT/PT - 2907921



Replacement plug for type 3 surge protection from the PLT-SEC-...-UT/PT product series. Nominal voltage 60 V.

Type 3 surge protection plug - PLT-SEC-T3-120-P-UT/PT - 2907922



Replacement plug for type 2/3 surge protection from the PLT-SEC-...-UT/PT product series. Nominal voltage 120 V.

Type 3 surge protection base element - PLT-SEC-T3-BE-FM-UT - 2907924

Accessories

Type 3 surge protection plug - PLT-SEC-T3-230-P-UT/PT - 2907923



Replacement plug for type 2/3 surge protection from the PLT-SEC-...-UT/PT product series. Nominal voltage 230 V.