

PRODUCT INFORMATION PACKET



Model No: 121975.00
Catalog No: 121975.00
2 HP Agricultural Motor, 1 phase, 1800 RPM, 230 V, 145T Frame, TEFC
Agricultural Motors



Regal and Leeson are trademarks of Regal Beloit Corporation or one of its affiliated companies.
©2020 Regal Beloit Corporation, All Rights Reserved. MC017097E





Nameplate Specifications

Output HP	2 Hp	Output KW	1.5 kW
Frequency	60 Hz	Voltage	230 V
Current	8.2 A	Speed	1725 rpm
Service Factor	1.15	Phase	1
Efficiency	85 %	Power Factor	94
Duty	Continuous	Insulation Class	F
Design Code	L	KVA Code	H
Frame	145T	Enclosure	Totally Enclosed Fan Cooled
Thermal Protection	Manual	Ambient Temperature	40 °C
Drive End Bearing Size	6205	Opp Drive End Bearing Size	6203
UL	Recognized	CSA	Y
CE	N	IP Code	43

Technical Specifications

Electrical Type	Capacitor Start Capacitor Run	Starting Method	Across The Line
Poles	4	Rotation	Selective Counterclockwise
Resistance Main	0 Ohms	Mounting	Rigid Base
Motor Orientation	Horizontal	Drive End Bearing	Ball
Opp Drive End Bearing	Ball	Frame Material	Rolled Steel
Shaft Type	T	Overall Length	14.43 in
Frame Length	8.50 in	Shaft Diameter	0.875 in
Shaft Extension	2.25 in	Assembly/Box Mounting	F1 ONLY
Outline Drawing	607-0377-850C	Connection Drawing	005056.03

This is an uncontrolled document once printed or downloaded and is subject to change without notice. Date Created:14/10/2020

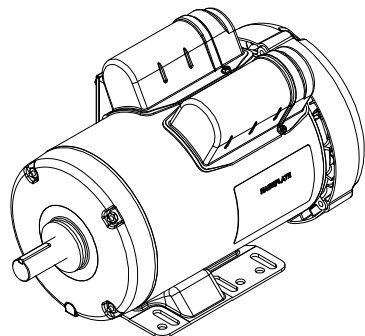
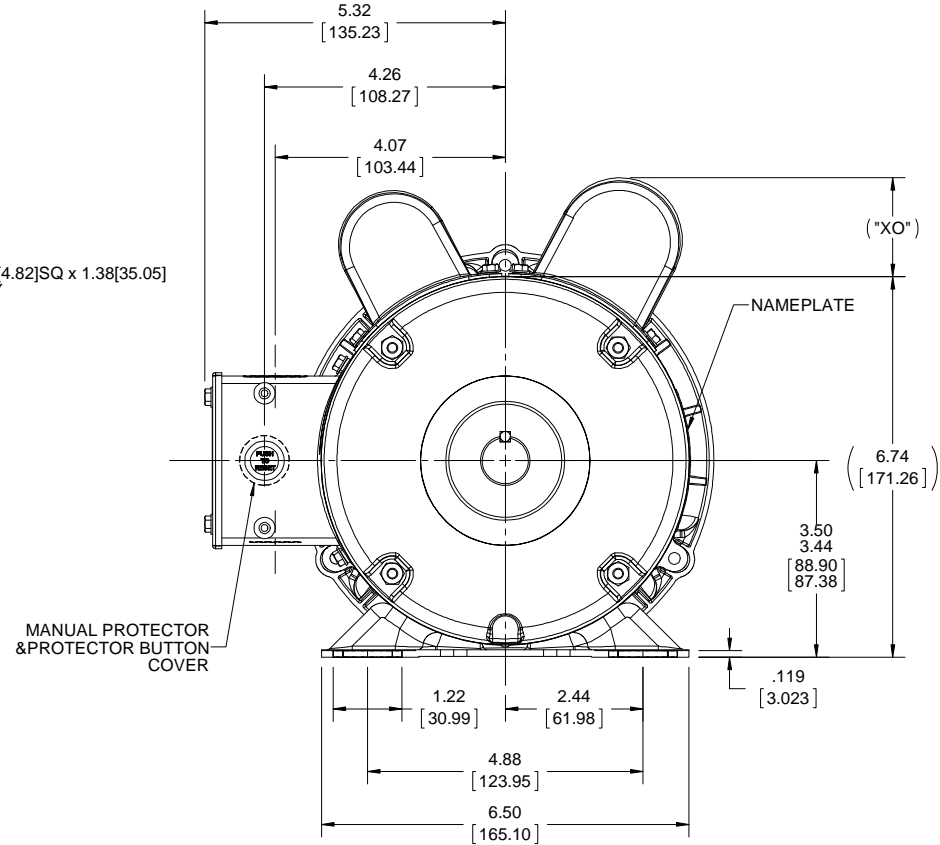
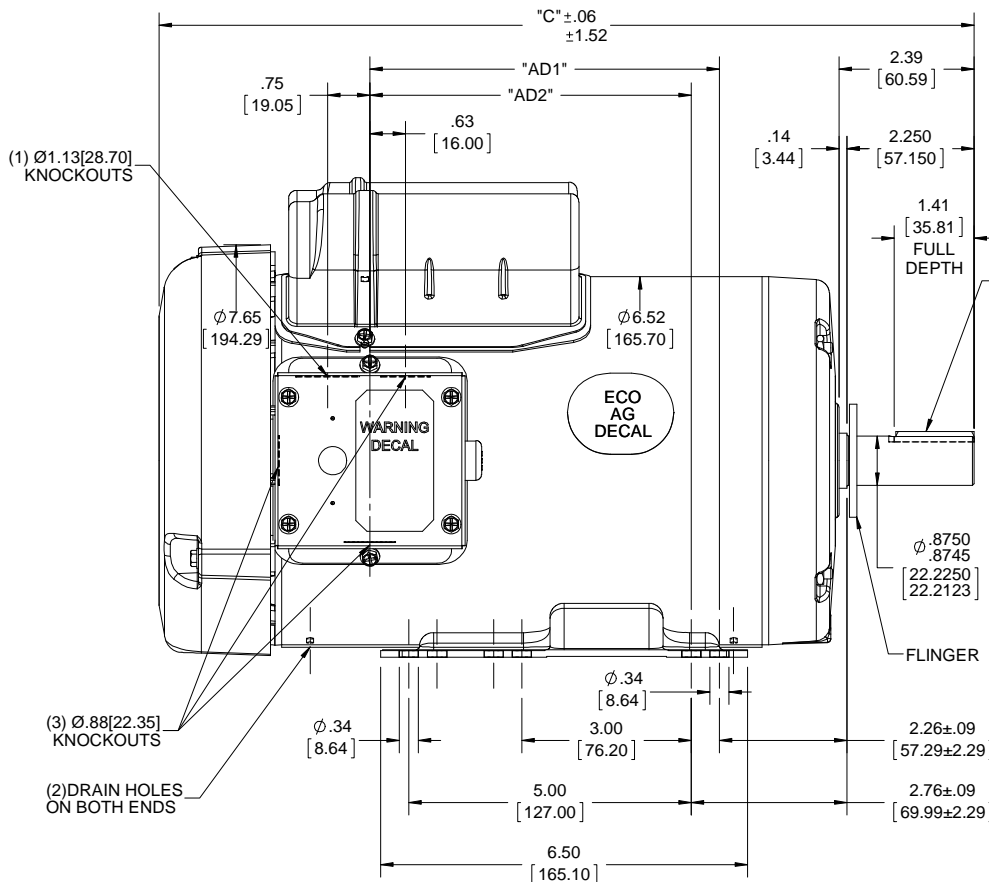
4

3

Uncontrolled Copy

2

1

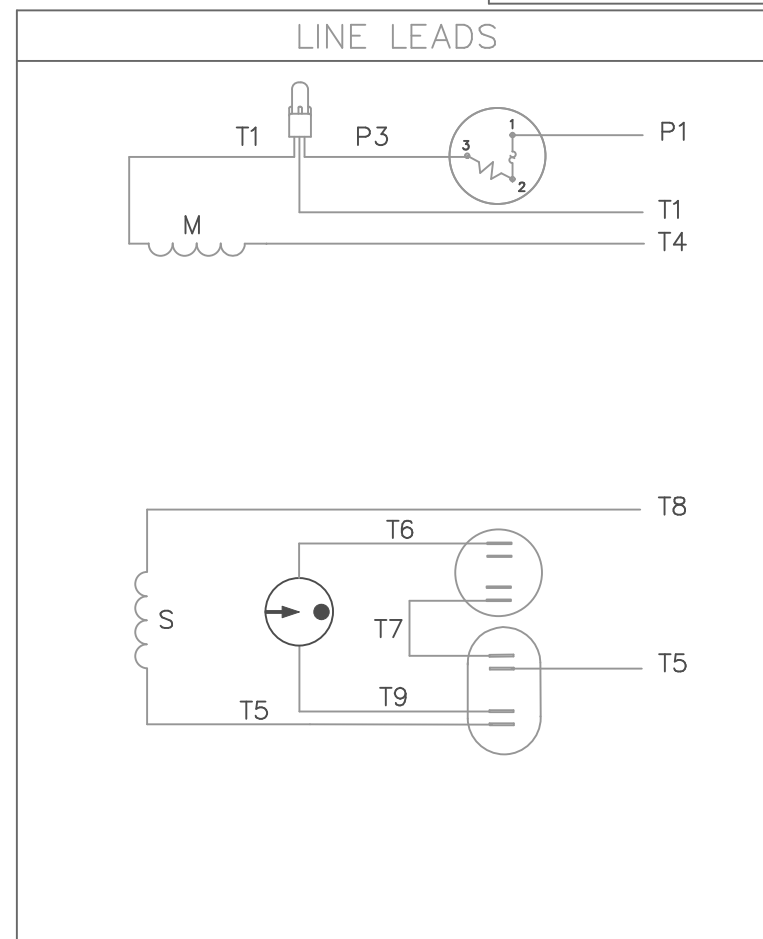
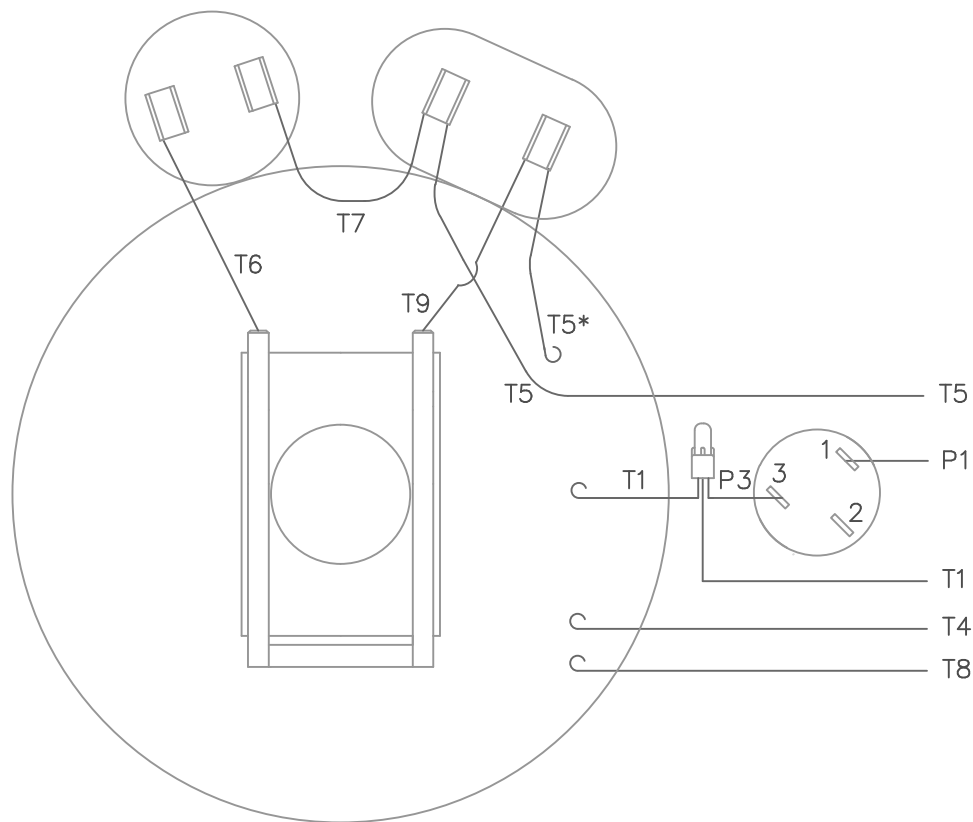


FARM DUTY MOTOR
 NOTES:
 1.FLINGER ON SHAFT
 2.GASKETS THROUGHOUT

DASH NO.	"C"	"AD1"	"AD2"	CAP DASH	"XO"
				A	1.15 [29.21]
				B	1.60 [40.64]
850	14.43[366.52]	6.19 [157.22]	5.69[144.52]	C	1.82 [46.22]

DRAWING REVISION A	REVISION BY	DATE	TOLERANCES UNLESS OTHERWISE SPECIFIED: DEC. INCH mm ANGLE ±0.5°	DRAWN BY H. ADI KE	Regal Beloit America, Inc.
ECO ECO-0153086	APPROVED BY	DATE	.X ±0.1 [±2.5] .XX ±0.03 [±0.76] .XXX ±0.005 [±0.127] .XXXX ±0.0005 [±0.0127]	DATE 5/2/2018	
ECO DESCRIPTION OUTLINE CONVERSION PROJECT			REMOVE BURRS & BREAK SHARP EDGES: .003/.015 [076/.381] X 45° CORNER FILLETS: R.02 [51]	APPROVED BY PK	DESCRIPTION OUTLINE 56HZ/140T FRAME TEFC - RIGID
<small>COPYRIGHT REGAL BELOIT AMERICA, INC. ALL RIGHTS RESERVED. PROPRIETARY AND CONFIDENTIAL INFORMATION - THIS DOCUMENT IS THE PROPERTY OF REGAL BELOIT AMERICA, INC. ("OWNER") AND CONTAINS OWNER'S PROPRIETARY INFORMATION. ANY PERSON, CORPORATION OR OTHER FIRM RECEIVING IT IS DEEMED, BY RECEIVING IT, TO AGREE THAT IT, AND/OR ANY PART OF IT, SHALL NOT BE DISCLOSED TO ANY PERSON, CORPORATION OR OTHER ENTITY, DUPLICATED, AND/OR USED, EXCEPT AS EXPRESSLY APPROVED IN WRITING IN ADVANCE BY OWNER. THIS DOCUMENT SHALL BE RETURNED TO OWNER UPON REQUEST. IT MAY BE SUBJECT TO CERTAIN RESTRICTIONS UNDER APPLICABLE EXPORT CONTROL LAWS AND REGULATIONS.</small>			MACHINED SURFACES: 125 INCH 3.2 mm SHOWN IN [BRACKETS]	DATE 9/20/2018	PROCESS/FINISH
				REFERENCE 607-0034	MATERIAL
				THIRD ANGLE PROJECTION	SIZE B
				DRAWING NUMBER 607-0377	SHEET 1 OF 1

VIEW FROM OUTSIDE OF MOTOR AT SWITCH END.



* THIS LEAD MAY BE WHITE

ROTATION FACING LEAD END	L1	L2	JOIN
C.C.W.	P1	T4, T5	T1, T8
C.W.	P1	T4, T8	T1, T5

			TOLERANCES UNLESS SPECIFIED		LEESON	ELECTRIC MOTORS GEARMOTORS AND DRIVES	DRAWN WLW 08/30/76		
			DEC.	INCHES				CHK WRK 09/24/76	
			.X	±.1			APPD		
08	ALTERNATE T5 LEAD MARKING WAS RED	RLW 8/6/02	.XX	±.01	TITLE	EXTERNAL WIRING DIAGRAM TYPE "K" W/ PROTECTOR	SCALE 1=1		
07	ADDED ALTERNATE T5 LEAD MARKING	RLW 5/31/02	KH	±.005			REF		
06	REDRAWN TO CAD	DBT 5/31/02		±.0005	MAT'L.	DECAL - 004015	FMF 6K17FB4		
NO.	REVISION	BY & DATE	CHK	ANG ±1/2'	FINISH		PREV		
THIS DRAWING IN DESIGN AND DETAIL IS OUR PROPERTY AND MUST NOT BE USED EXCEPT IN CONNECTION WITH OUR WORK ALL RIGHTS OF DESIGN AND INVENTION ARE RESERVED THIS IS AN ELECTRONICALLY GENERATED DOCUMENT - DO NOT SCALE THIS PRINT			RFP		CAD FILE	00505603	SIZE A	DRAWING NO. 005056-03	REV. 08
			DIST	BRF-NLV					



1051 CHEYENNE AVE.
 GRAFTON, WI 53024
 PH. 262-377-8810

CERTIFICATION DATA SHEET

CATALOG #: 121975.00

CONN. DIAGRAM: 005056.03

OUTLINE: 607-0377-850C

MOUNTING: F1 ONLY

WINDING #: K634340 FR 2 A

TYPICAL MOTOR PERFORMANCE DATA

HP	kW	SYNC. RPM	F.L. RPM	FRAME	ENCLOSURE	KVA CODE	DESIGN		
2	1.49	1800	1725	145T	TEFC	H	L		
PH	Hz	VOLTS	AMPS	START TYPE		DUTY	INSL	S.F.	AMB°C
1	60	230	8.2	ACROSS THE LINE		CONTINUOUS	F4	1.15	40

FULL LOAD EFF:	85	3/4 LOAD EFF:	80.6	1/2 LOAD EFF:	75.6	GTD. EFF	81.5	ELEC. TYPE
FULL LOAD PF:	94	3/4 LOAD PF:	84.8	1/2 LOAD PF:	77.4	81.5	CAP START CAP RUN	

F.L. TORQUE	LOCKED ROTOR AMPS	L.R. TORQUE	B.D. TORQUE	F.L. RISE°C		
6 LB-FT	61.8	15.42 LB-FT	0 %	19.58 LB-FT	0 %	83

SOUND PRESSURE @ 3 FT.	SOUND POWER	ROTOR WK^2	MAX. WK^2	SAFE STALL TIME	STARTS / HOUR	APPROX. MOTOR WGT
0 DBA	10 DBA	0.16 LB-FT^2	0 LB-FT^2	10 SEC.	0	44 LBS.

*** SUPPLEMENTAL INFORMATION ***

DE BRACKET TYPE	ODE BRACKET TYPE	MOUNT TYPE	ORIENTATION	SEVERE DUTY	HAZARDOUS LOCATION	DRIP COVER	SCREENS	PAINT
STANDARD	STANDARD	RIGID	HORIZONTAL	FALSE	NONE	FALSE	NONE	GREEN (ENAMEL)
BEARINGS DE ODE	GREASE	SHAFT TYPE	SPECIAL DE	SPECIAL ODE	SHAFT MATERIAL	FRAME MATERIAL		
BALL BALL	POLYREX EM	T	NONE	NONE	1144 STRESSPROOF (C-223)	ROLLED STEEL		

THERMO-PROTECTORS				THERMISTORS	CONTROL	SPACE HEATERS
HERMOSTATS	PROTECTORS	WDG RTDS	BRG RTDS	NONE	FALSE	NONE
NONE	MANUAL	NONE	NONE	NONE	FALSE	NONE

* INVERTER TORQUE: NONE

INV. HP SPEED RANGE: NONE

ENCODER:	NONE	NONE	PPR
NONE	NONE	NONE	PPR
NONE	NONE	NONE	PPR

BRAKE:	NONE	NONE	NONE
NONE	NONE	P/N NONE	NONE
NONE	NONE	NONE	NONE
NONE	FT-LB	NONE	V NONE
NONE	NONE	NONE	Hz

S

