

PRODUCT INFORMATION PACKET



Model No: M1110014.00
Catalog No: M1110014.00
0.04 HP Sub-Fractional Motor, 3500 RPM, 90 V, 25 Frame, TENV
Sub-Fractional Motors



Regal and Leeson are trademarks of Regal Beloit Corporation or one of its affiliated companies.
©2020 Regal Beloit Corporation, All Rights Reserved. MC017097E





Nameplate Specifications

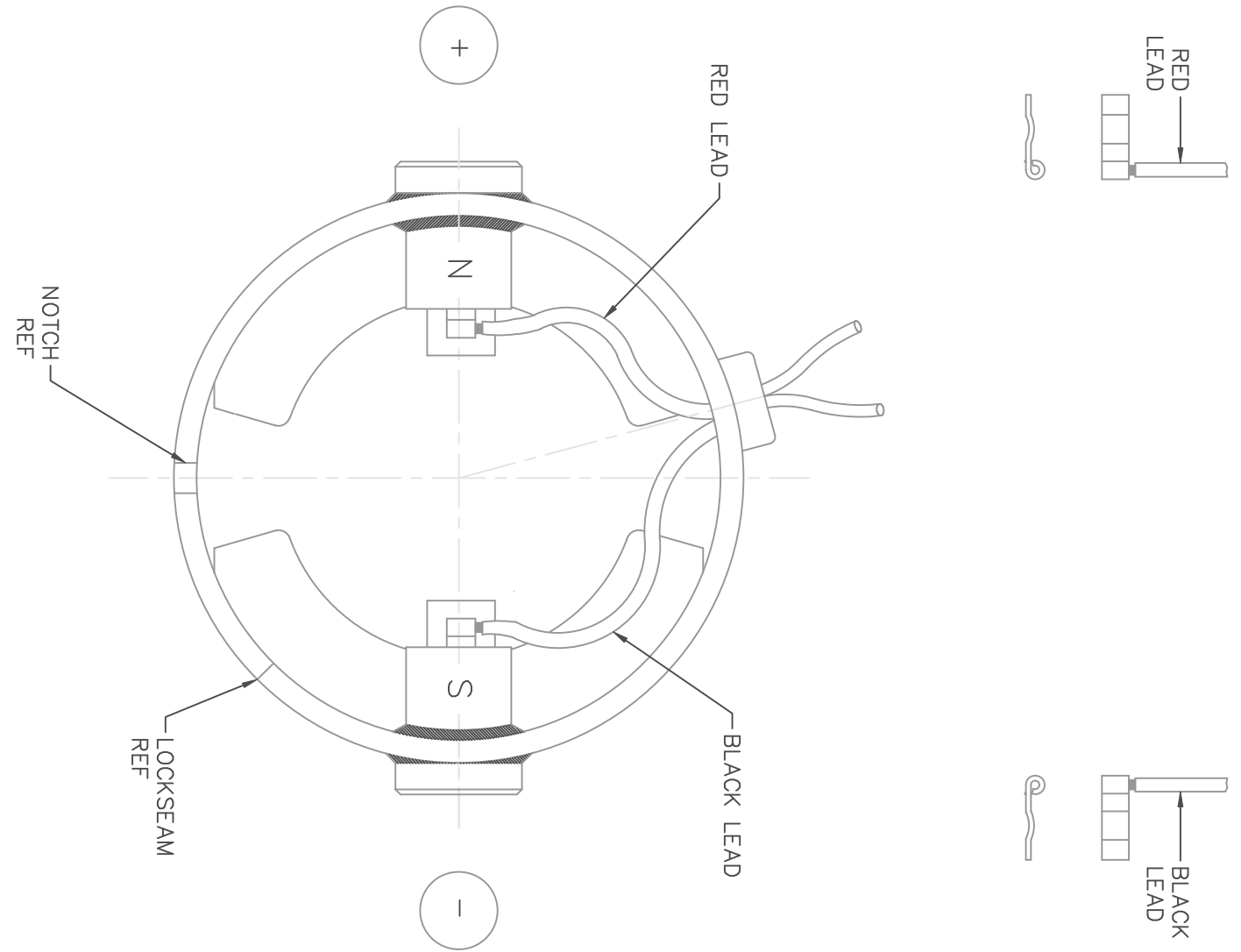
Output HP	0.04 Hp	Output KW	0.03 kW
Voltage	90 V	Current	0.56 A
Speed	3500 rpm	Service Factor	1.3
Efficiency	59.5 %	Duty	Continuous
Insulation Class	F	Frame	25
Enclosure	Totally Enclosed Non Ventilated	Thermal Protection	No
Ambient Temperature	40 °C	Drive End Bearing Size	608-S
Opp Drive End Bearing Size	608-S	UL	Recognized
CSA	Y	CE	Y

Technical Specifications

Rotation	Reversible	Mounting	Round
Overall Length	5.58 in	Frame Length	3.50 in
Shaft Diameter	0.312 in	Shaft Extension	1.5 in
Outline Drawing	M1030888-M1110014	Connection Drawing	M100526101

This is an uncontrolled document once printed or downloaded and is subject to change without notice. Date Created:30/12/2020

DC MOTORS



EXTERNAL CONNECTIONS FOR CW ROTATION VIEWING
 LEAD END OF MOTOR WITH RED LEAD POSITIVE (+)
 AND BLACK LEAD NEGATIVE (-)
 FOR CW ROTATION REVERSE POLARITY

				TOLERANCES UNLESS SPECIFIED		LEESON ELECTRIC MOTORS GEARMOTORS AND DRIVES	DRAWN SAD 06/20/03 CHK IPG 06/20/03 APPD
				DEC.	INCHES		SCALE 1=1
				.X	±.1	TITLE CONNECTION DIAGRAM TRU-TORQ	REF PR020584
02	CORRECTED "N" & "S", ADDED TRU-TORQ TO THE TITLE BLOCK AND ORACLE DESCRIPTION, ECR 83989	IPG 3/1/2004	SAD	.XX	±.01		MAT'L. SEE ABOVE
01	CORRECTED "N" & "S", ECR 83508	SMB 01/21/04	IPG	.XXX	±.005	FINISH	PREV
NO.	REVISION	BY & DATE	CHK	ANG	±1/2'		CAD FILE M100526101
THIS DRAWING IN DESIGN AND DETAIL IS OUR PROPERTY AND MUST NOT BE USED EXCEPT IN CONNECTION WITH OUR WORK ALL RIGHTS OF DESIGN AND INVENTION ARE RESERVED THIS IS AN ELECTRONICALLY GENERATED DOCUMENT - DO NOT SCALE THIS PRINT				RFP		DRAWING NO.	M1005261.01
				DIST		REV.	02

LEESON ELECTRIC CORPORATION

TYPICAL PERFORMANCE CURVE FOR DIRECT CURRENT PERMANENT MAGNET MOTOR

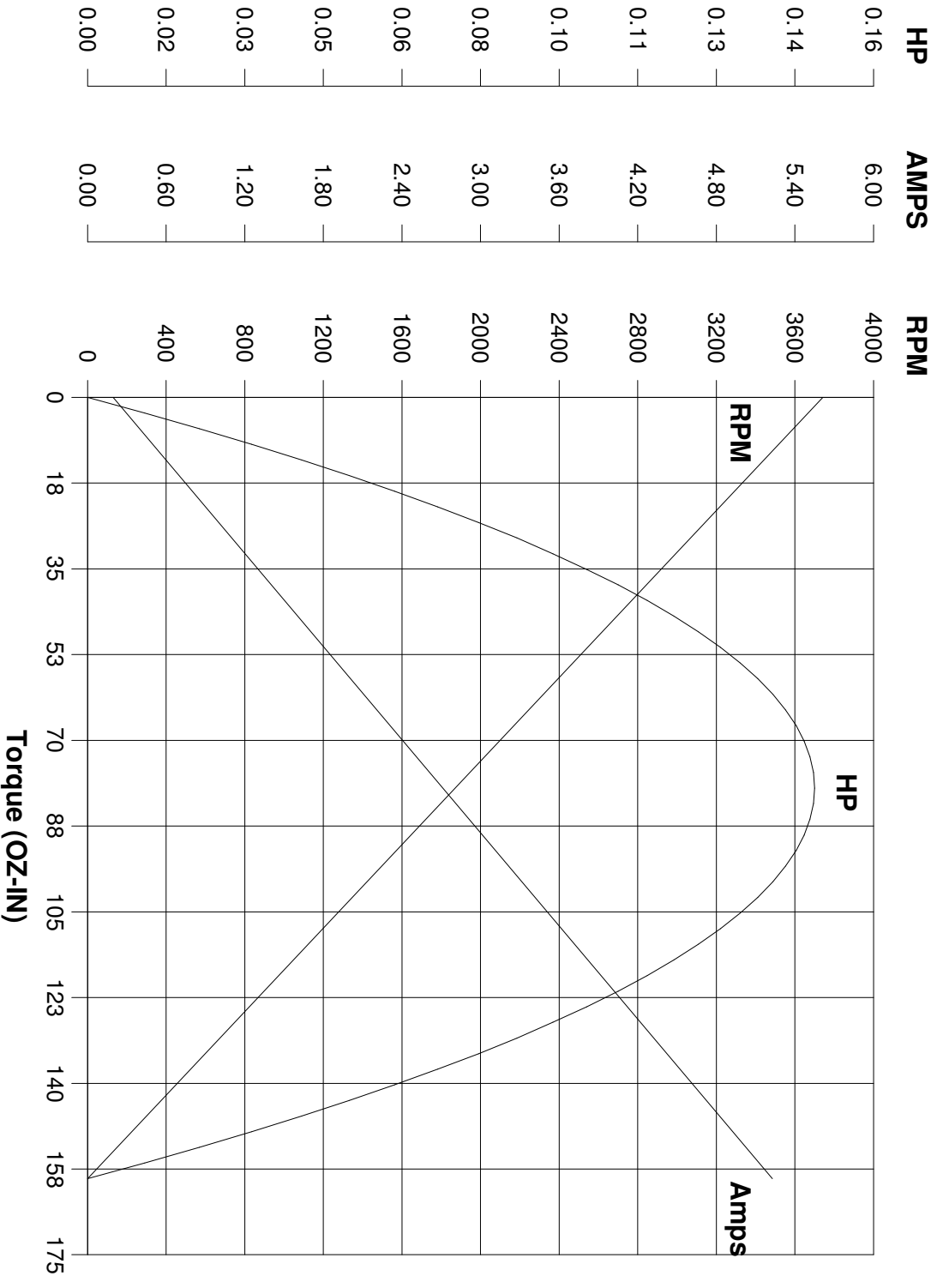
Model No. 980.533

Catalog No. M1110014.00

HP 0.040 RPM 3500 DC Volts 90.0 N.P. FLA 0.56

F.F. 1.38 Encl TENV Type DN S.F. 1.00

Max. Amb. 40.0 Deg C Insul. F Frame 25 Duty Cont



Ra 15.800 Ohms
 La 25.00 mHenrys
 Ja 0.0300 LB-IN^{1/2}
 Ke 23.22 V/KRPM

Kt 31.41 OZ-IN/AMP
 I_{max} 8.5 AMPS Allowed
 FL Torque 11.50 OZ-IN
 FL EFF 59.50 %

Winding W- MD25229-1 Prepared by V. Boehlen Date 05-09-2005