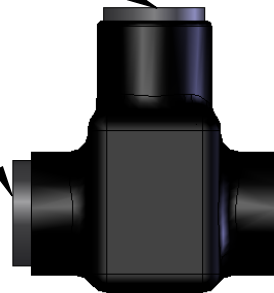


REMOVABLE CAP  
TO TIGHTEN SCREW  
(REPLACE WHEN COMPLETE)

REMOVABLE CAP  
FOR DUAL ENTRY  
(INSERT IN OTHER SIDE)

IPLD3/0-5 SHOWN

PART NUMBER	NO. OF PORTS	LENGTH
IPLD3/0-3	3	2.63
IPLD3/0-4	4	3.41
IPLD3/0-5	5	4.19
IPLD3/0-6	6	4.97
IPLD3/0-7	7	5.75
IPLD3/0-8	8	6.53
IPLD3/0-10	10	8.09
IPLD3/0-14	14	11.21



WIRE ENTRY POINT  
WIRE RANGE: 3/0 - #6AWG  
PRE-FILLED W/ OXIDE INHIBITOR

CONTACT NSi FOR SALES @ 800.321.5847

NOTES:

- CONNECTOR MANUFACTURED FROM 6061-T6 ALUMINUM ALLOY.
- UL LISTED PER UL486A/B SPECIFICATIONS FOR 600V.
- DUAL RATED FOR 90°C COPPER AND/OR ALUMINUM CONDUCTOR.
- COLD TEMPERATURE RATED TO -45°C.
- HIGH DIELECTRIC STRENGTH INSULATION IS ABRASION, CHEMICAL AND UV RESISTANT.

		<b>POLARIS</b> SALES . CO . INC					
PROPRIETARY AND CONFIDENTIAL		11625 PROSPEROUS DRIVE ODESSA, FL 33556					
<small>THE INFORMATION CONTAINED IN THIS DRAWING IS THE SOLE PROPERTY OF POLARIS SALES CO. INC. ANY REPRODUCTION IN PART OR AS A WHOLE WITHOUT THE WRITTEN PERMISSION OF POLARIS SALES CO. INC. IS PROHIBITED.</small>		<b>TITLE:</b> <b>INSULATED DUAL ENTRY 3/0 CONNECTOR</b>					
<table border="1"> <tr> <th>NAME</th> <th>DATE</th> </tr> <tr> <td>S.PARRY</td> <td>6/2012</td> </tr> </table>		NAME	DATE	S.PARRY	6/2012	<b>DWG. NO.</b> IPLD3/0-	
NAME	DATE						
S.PARRY	6/2012						
<b>MATERIAL:</b> N/A		<b>SCALE:</b> N/A	<b>SHEET:</b> 1 OF 1				