

PRODUCT INFORMATION PACKET



Model No: C6K17DB53A

Catalog No: E110005.00

..1.5HP..1800RPM.56H.DP.115/230V.1PH.60HZ.CONT.40C.1.15SF.RIGID BASE.C6K17DB53.....GENERAL PURPOSE.NONE.....

Open Drip Proof (ODP)



Regal and Leeson are trademarks of Regal Beloit Corporation or one of its affiliated companies.

©2018 Regal Beloit Corporation, All Rights Reserved. MC017097E



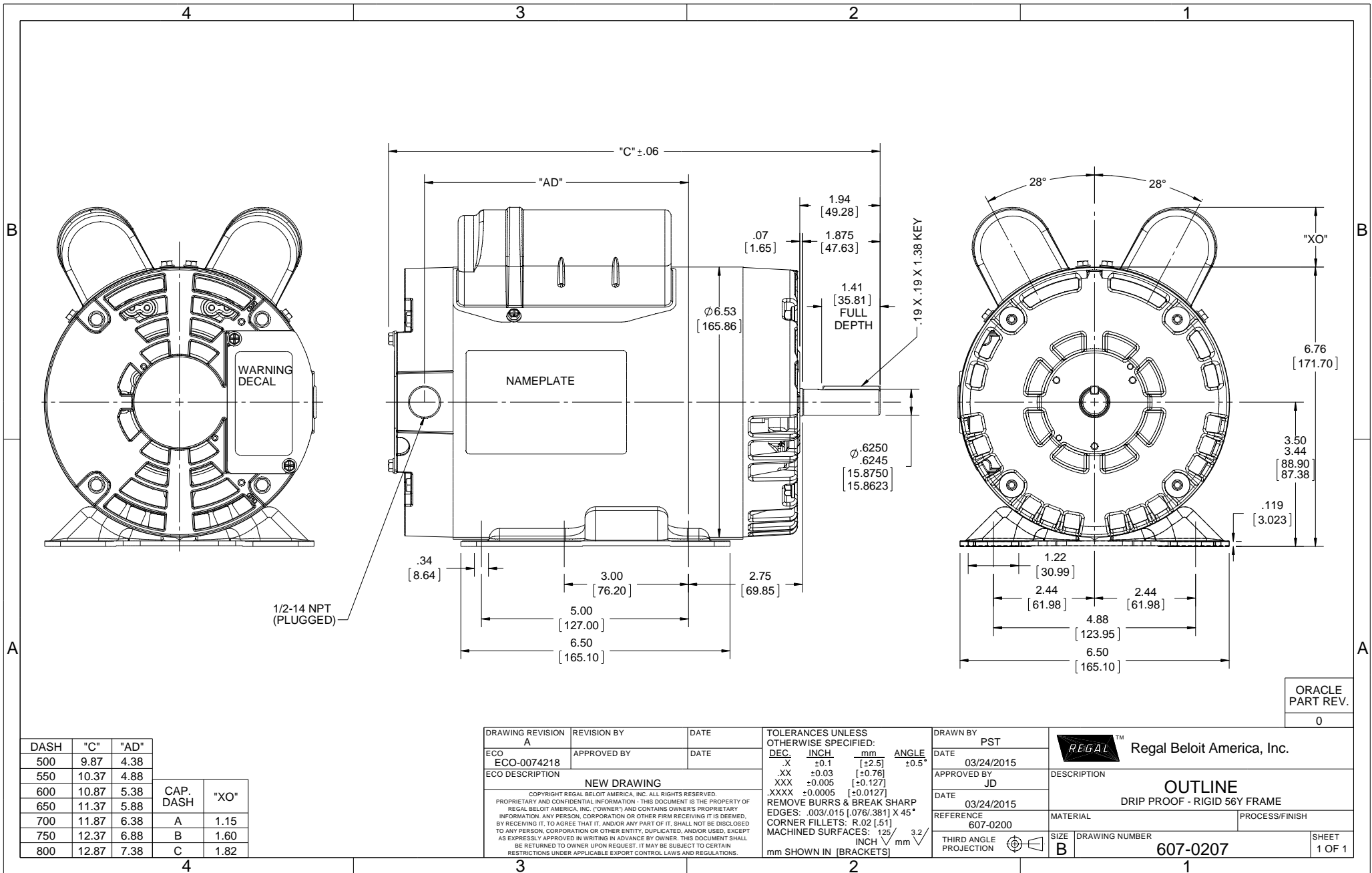


Nameplate Specifications

Output HP	1.50 Hp	Output KW	1.1 kW
Frequency	60 Hz	Voltage	115/230 V
Current	13.0/6.5 A	Speed	1725 rpm
Service Factor	1.15	Phase	1
Efficiency	83.8 %	Duty	Continuous
Insulation Class	F	Design Code	L
KVA Code	J	Frame	56H
Enclosure	Drip Proof	Overload Protector	No
Ambient Temperature	40 °C	Drive End Bearing Size	6203
Opp Drive End Bearing Size	6203	UL	Recognized
CSA	Y	CE	Y
IP Code	22		

Technical Specifications

Electrical Type	Capacitor Start Capacitor Run	Starting Method	Across The Line
Poles	4	Rotation	Selective Counterclockwise
Mounting	Rigid base	Motor Orientation	HORIZONTAL
Drive End Bearing	BALL	Opp Drive End Bearing	BALL
Frame Material	Rolled Steel	Shaft Type	NEMA 56
Overall Length	12.87 in	Frame Length	8.00 in
Shaft Diameter	0.625 in	Shaft Extension	1.88 in
Assembly/Box Mounting	F1 ONLY		
Outline Drawing	607-0207-800B	Connection Diagram	005054.01



DASH	"C"	"AD"	CAP. DASH	"XO"
500	9.87	4.38		
550	10.37	4.88		
600	10.87	5.38		
650	11.37	5.88		
700	11.87	6.38	A	1.15
750	12.37	6.88	B	1.60
800	12.87	7.38	C	1.82

DRAWING REVISION	REVISION BY	DATE
A		
ECO-0074218	APPROVED BY	DATE
ECO DESCRIPTION		
NEW DRAWING		
<small>COPYRIGHT REGAL BELOIT AMERICA, INC. ALL RIGHTS RESERVED. PROPRIETARY AND CONFIDENTIAL INFORMATION - THIS DOCUMENT IS THE PROPERTY OF REGAL BELOIT AMERICA, INC. ("OWNER") AND CONTAINS OWNER'S PROPRIETARY INFORMATION. ANY PERSON, CORPORATION OR OTHER FIRM RECEIVING IT IS DEEMED, BY RECEIVING IT, TO AGREE THAT IT, AND/OR ANY PART OF IT, SHALL NOT BE DISCLOSED TO ANY PERSON, CORPORATION OR OTHER ENTITY, DUPLICATED, AND/OR USED, EXCEPT AS EXPRESSLY APPROVED IN WRITING IN ADVANCE BY OWNER. THIS DOCUMENT SHALL BE RETURNED TO OWNER UPON REQUEST. IT MAY BE SUBJECT TO CERTAIN RESTRICTIONS UNDER APPLICABLE EXPORT CONTROL LAWS AND REGULATIONS.</small>		

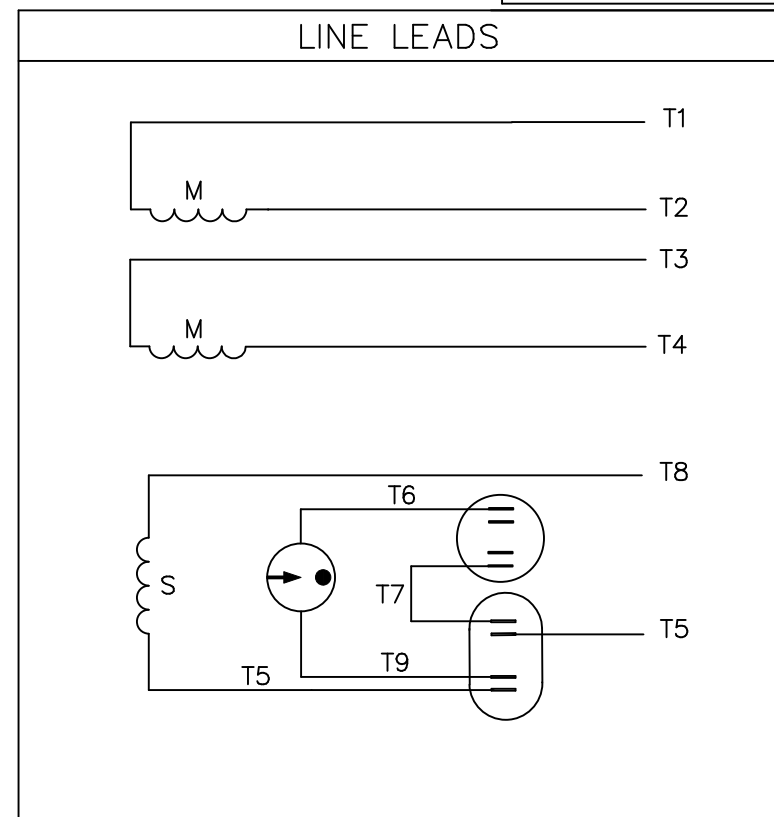
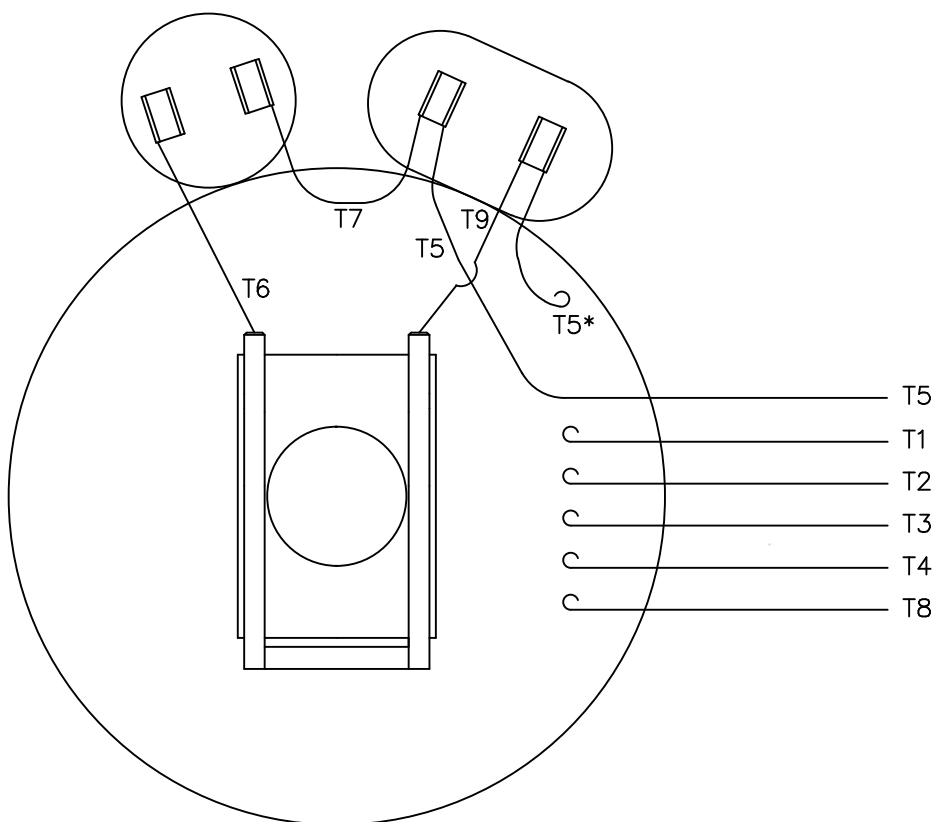
TOLERANCES UNLESS OTHERWISE SPECIFIED:			
DEC.	INCH	mm	ANGLE
.X	+0.1	[+2.5]	±0.5°
.XX	±0.03	[±0.76]	
.XXX	±0.005	[±0.127]	
.XXXX	±0.0005	[±0.0127]	
REMOVE BURRS & BREAK SHARP EDGES: .003/.015 [0.076/.381] X 45°			
CORNER FILLETS: R.02 [51]			
MACHINED SURFACES: 125 INCH √ 3.2 mm SHOWN IN [BRACKETS]			

DRAWN BY	PST
DATE	03/24/2015
APPROVED BY	JD
DATE	03/24/2015
REFERENCE	607-0200
THIRD ANGLE PROJECTION	

Regal Beloit America, Inc.	
DESCRIPTION	
OUTLINE DRIP PROOF - RIGID 56Y FRAME	
MATERIAL	PROCESS/FINISH
SIZE	DRAWING NUMBER
B	607-0207
SHEET	1 OF 1

ORACLE PART REV.
0

VIEW FROM OUTSIDE OF MOTOR AT SWITCH END.



	ROTATION FACING LEAD END	L1	L2	JOIN
HIGH VOLT	C.C.W.	T1	T4 T5	T2,T3 T8
	C.W.	T1	T4 T8	T2,T3 T5
LOW VOLT	C.C.W.	T1 T3,T8	T2,T4 T5	
	C.W.	T1,T3 T5	T2,T4 T8	

* THIS LEAD MAY BE WHITE

		TOLERANCES UNLESS SPECIFIED		LEESON ELECTRIC MOTORS GEARMOTORS AND DRIVES		DRAWN JRW 09/27/74	
		DEC.	INCHES			CHK	TEM
		.X	±.1			APPD	10/11/74
11	ALTERNATE T5 LEAD MARKING WAS RED	RLW	8/6/02	.XX	±.01	TITLE	EXT. WIRING DIAGRAM TYPE "K" W/O PROTECTOR
10	ADDED ALTERNATE T5 LEAD MARKING	RLW	6/5/02	KH	.XXX ±.005	SCALE	1=1
09	REDRAWN TO CAD	DBT	05/28/97		.XXXX ±.0005	REF	A-005053
NO.	REVISION	BY & DATE	CHK	ANG	±1/2°	MAT'L.	DECAL-004012
						FINISH	
THIS DRAWING IN DESIGN AND DETAIL IS OUR PROPERTY AND MUST NOT BE USED EXCEPT IN CONNECTION WITH OUR WORK ALL RIGHTS OF DESIGN AND INVENTION ARE RESERVED THIS IS AN ELECTRONICALLY GENERATED DOCUMENT - DO NOT SCALE THIS PRINT		RFP		CAD FILE	00505401	SIZE	DRAWING NO.
		DIST	BRF-NLV			A	005054-01
							REV.
							11



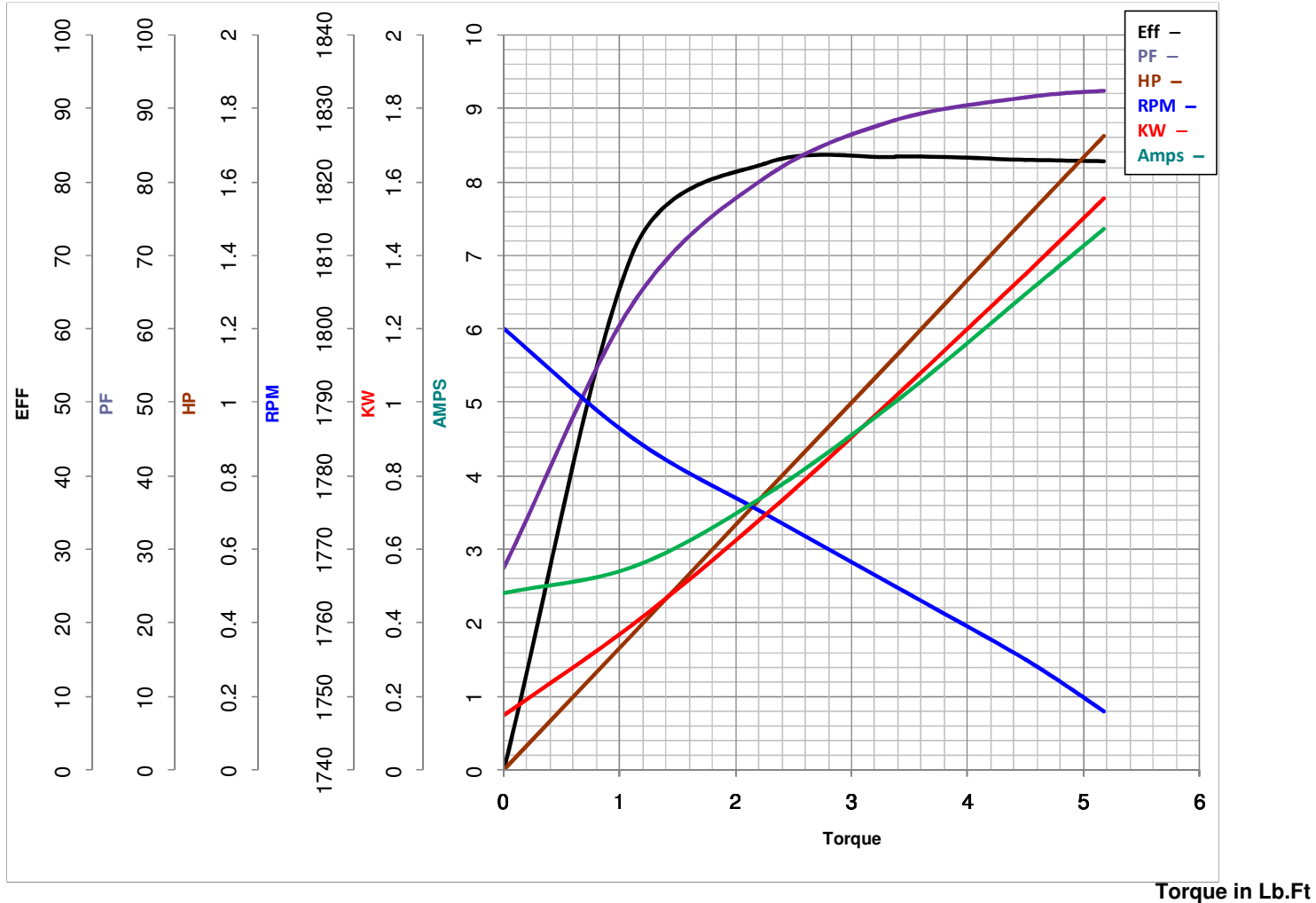
LEESON ELECTRIC CORPORATION
 TYPICAL PERFORMANCE CURVE for AC MOTOR

Model No E110005.00

Curve at 230 Volts HP 1.50 PHASE 1
60 HZ
1.5 HP VOLTS 115/230

Catalog No E110005.00

HZ 60 RPM 1725



FL TORQUE	<u>4.5</u>	Lb.Ft	FL AMPS	<u>13/6.5</u>	
BD TORQUE	<u>13.3</u>	Lb.Ft	PU TORQUE	<u>11.2</u>	Lb.Ft
LR TORQUE	<u>12.43</u>	Lb.Ft	LR AMPS	<u>47.2</u>	
WINDING	<u>K634339-3</u>		Date	<u>3/21/2018</u>	