

PRODUCT INFORMATION PACKET



Model No: 102860.00

Catalog No: 102860.00

0.50 HP General Purpose Motor, 3 phase, 1800 RPM, 208-230/460 V, 56C Frame, TEFC
Three Phase TEFC Motors



Regal and Leeson are trademarks of Regal Beloit Corporation or one of its affiliated companies.

©2020 Regal Beloit Corporation, All Rights Reserved. MC017097E

REGAL



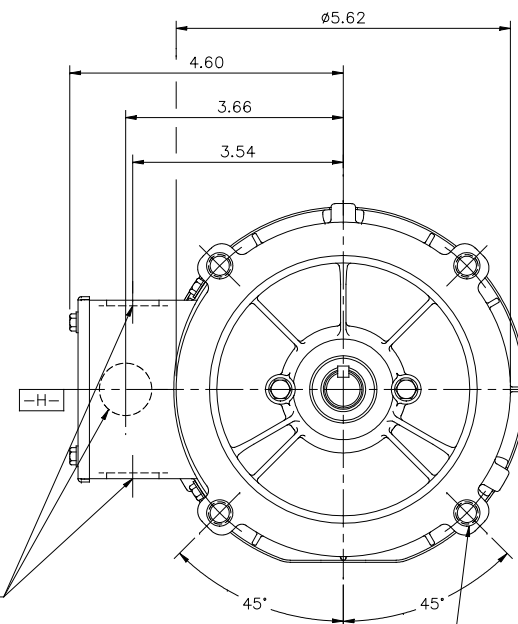
Nameplate Specifications

Output HP	0.50 Hp	Output KW	0.37 kW
Frequency	60 Hz	Voltage	208-230/460 V
Current	1.9-2.0/1.0 A	Speed	1725 rpm
Service Factor	1.15	Phase	3
Efficiency	73 %	Power Factor	62
Duty	Continuous	Insulation Class	B
Design Code	B	KVA Code	L
Frame	S56C	Enclosure	Totally Enclosed Fan Cooled
Thermal Protection	No	Ambient Temperature	40 °C
Drive End Bearing Size	6203	Opp Drive End Bearing Size	6203
UL	Recognized	CSA	Y
CE	N	IP Code	43

Technical Specifications

Electrical Type	Squirrel Cage Induction Run	Starting Method	Across The Line
Poles	4	Rotation	Reversible
Resistance Main	8.91 Ohms	Mounting	Round
Motor Orientation	Horizontal	Drive End Bearing	Ball
Opp Drive End Bearing	Ball	Frame Material	Rolled Steel
Shaft Type	NEMA 56	Overall Length	10.19 in
Frame Length	5.50 in	Shaft Diameter	0.625 in
Shaft Extension	1.88 in	Assembly/Box Mounting	F1 ONLY
Connection Drawing	005010.01	Outline Drawing	031637-550


This is an uncontrolled document once printed or downloaded and is subject to change without notice. Date Created:14/10/2020



3/8-16 UNC 2B TAP x .56 DEEP
(4) REQ'D. ON A Ø5.875 B.C.

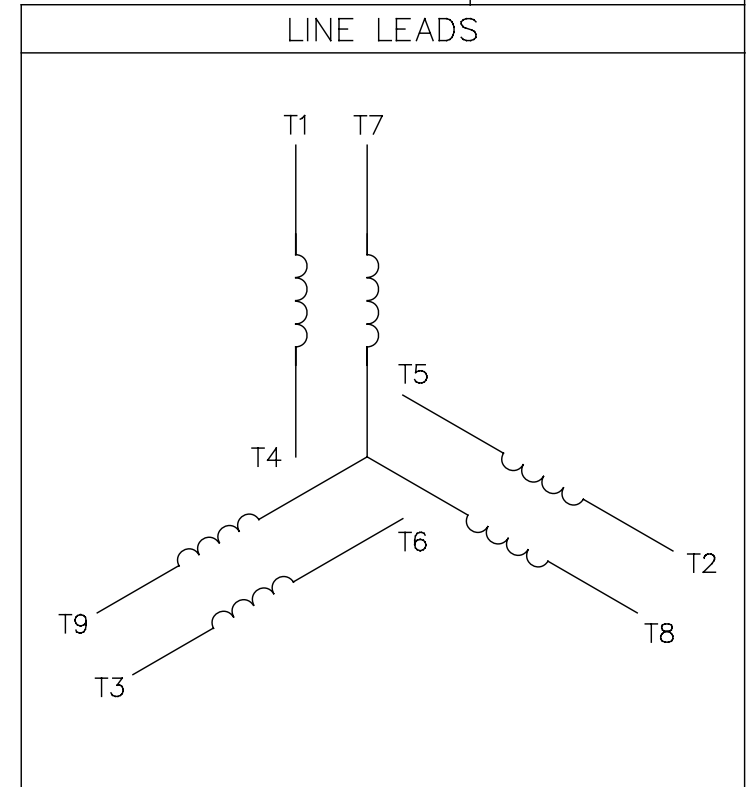
GASKETS THROUGHOUT

DASH NO.	"C"	"AD"
475	9.44	4.25
500	9.69	4.50
525	9.94	4.75
550	10.19	5.00
575	10.44	5.25
600	10.69	5.50
625	10.94	5.75
650	11.19	6.00
675	11.44	6.25
700	11.69	6.50
725	11.94	6.75
750	12.19	7.00


				TOLERANCES UNLESS SPECIFIED	 Regal Beloit America, Inc.		DRAWN PG 7/12/01
				DEC. INCHES			CHK
			.X ±.1				APPD PG 7/12/01
03	UPDATED SHAFT KEYWAY VIEW	UD 11/27/18	.XX ±.03	TITLE	OUTLINE – S56C FRAME		SCALE 1=2
02	ADDED DASH NO. 475 TO TABLE (102184.00)	PG 9/19/02	.XXX ±.005		"C" FACE MOUNT – TEFC		REF
01	REVISED CALLOUT FOR GD&T	KMM 6/6/02	PG .XXXX ±.0005	MAT'L	3 PHASE		FIMF
NO.	REVISION	BY & DATE	CHK ANG ±1/2"	FINISH			PREV
THIS DRAWING IN DESIGN AND DETAIL IS OUR PROPERTY AND MUST NOT BE USED EXCEPT IN CONNECTION WITH OUR WORK ALL RIGHTS OF DESIGN AND INVENTION ARE RESERVED THIS IS AN ELECTRONICALLY GENERATED DOCUMENT – DO NOT SCALE THIS PRINT				RFP DIST	CAD FILE 031637	SIZE B DRAWING NO. 031637	REV 02

005010-01

VIEW FROM OUTSIDE OF MOTOR AT SWITCH END.



VOLTAGE	L1	L2	L3	JOIN & INSULATE
HIGH	T1	T2	T3	(T4,T7) (T5,T8) (T6,T9)
LOW	T1,T7	T2,T8	T3,T9	T4,T5,T6

				TOLERANCES UNLESS SPECIFIED		 Regal Beloit America, Inc.			DRAWN RDW 04/12/02					
				DEC.	INCHES				CHK					
				.X	±.1				APPD					
				.XX	±.01				SCALE 1=1					
				.XXX	±.005	TITLE EXTERNAL WIRING DIAGRAM 3 PHASE W/O PROTECTOR			REF FIG.2-51					
A	UPDATED TO REGAL LOGO	SAJ 06/26/15	AJY	.XXXX	±.0005				MAT'L DECAL - 004014			FMF		
NO.	REVISION	BY & DATE	CHK	ANG	±1/2"	FINISH			PREV					
THIS DRAWING IN DESIGN AND DETAIL IS OUR PROPERTY AND MUST NOT BE USED EXCEPT IN CONNECTION WITH OUR WORK ALL RIGHTS OF DESIGN AND INVENTION ARE RESERVED THIS IS AN ELECTRONICALLY GENERATED DOCUMENT - DO NOT SCALE THIS PRINT			RFP		04/12/02		CAD FILE		00501001		SIZE	DRAWING NO.		REV.
			DIST		BRF-NLV						A	005010-01		A



1051 CHEYENNE AVE.
GRAFTON, WI 53024
PH. 262-377-8810

CERTIFICATION DATA SHEET

CONN. DIAGRAM: 005010.01

CATALOG #: 102860.00

OUTLINE: 031637-550

MOUNTING: F1 ONLY

WINDING #: TE48415 FR 3 B

TYPICAL MOTOR PERFORMANCE DATA

HP	KW	SYNC. RPM	F.L. RPM	FRAME	ENCLOSURE	KVA CODE	DESIGN
1/2	0.37	1800	1725	S56C	TEFC	L	B

PH	Hz	VOLTS	AMPS	START TYPE	DUTY	INSL	S.F.	AMB°C
3	60	208-230/460	1.9-2/1	ACROSS THE LINE	CONTINUOUS	B3	1.15	40

FULL LOAD EFF:	73	3/4 LOAD EFF:	63.8	1/2 LOAD EFF:	55.5	GTD. EFF	ELEC. TYPE
FULL LOAD PF:	62	3/4 LOAD PF:	56.2	1/2 LOAD PF:	46	66	SQ CAGE IND RUN

F.L. TORQUE	LOCKED ROTOR AMPS	L.R. TORQUE	B.D. TORQUE	F.L. RISE°C
24 OZ-FT	11.9 / 6	95.9 OZ-FT	400 %	100 OZ-FT 417 %
				-

SOUND PRESSURE @ 3 FT.	SOUND POWER	ROTOR WK^2	MAX. WK^2	SAFE STALL TIME	STARTS / HOUR	APPROX. MOTOR WGT
60 dbA	70 dbA	0.045 LB-FT^2	0 LB-FT^2	10 SEC.	0	23 LBS.

*** SUPPLEMENTAL INFORMATION ***

DE BRACKET TYPE	ODE BRACKET TYPE	MOUNT TYPE	ORIENTATION	SEVERE DUTY	HAZARDOUS LOCATION	DRIP COVER	SCREENS	PAINT
C-FACE	STANDARD	ROUND	HORIZONTAL	FALSE	NONE	FALSE	NONE	BLUE - LEESON (ENAMEL)

BEARINGS		GREASE	SHAFT TYPE	SPECIAL DE	SPECIAL ODE	SHAFT MATERIAL	FRAME MATERIAL
DE	ODE						
BALL	BALL	MULTEMP SRL	T	NONE	NONE	1144 STRESSPROOF (C-223)	ROLLED STEEL
6203	6203						

THERMO-PROTECTORS				THERMISTORS	CONTROL	SPACE HEATERS
THERMOSTATS		PROTECTORS	WDG RTDs	BRG RTDs		
NONE		NOT	NONE	NONE	FALSE	NONE VOLTS

*

INVERTER TORQUE:	NONE
INV. HP SPEED RANGE:	NONE

ENCODER:	NONE
NONE	NONE
NONE	PPR

BRAKE:	NONE	NONE
NONE	P/N	NONE
NONE	NONE	NONE
FT-LB	NONE	V NONE HZ

S



LEESON ELECTRIC CORPORATION

TYPICAL PERFORMANCE CURVE for AC MOTOR

Model No 102860.00

Curve at

460

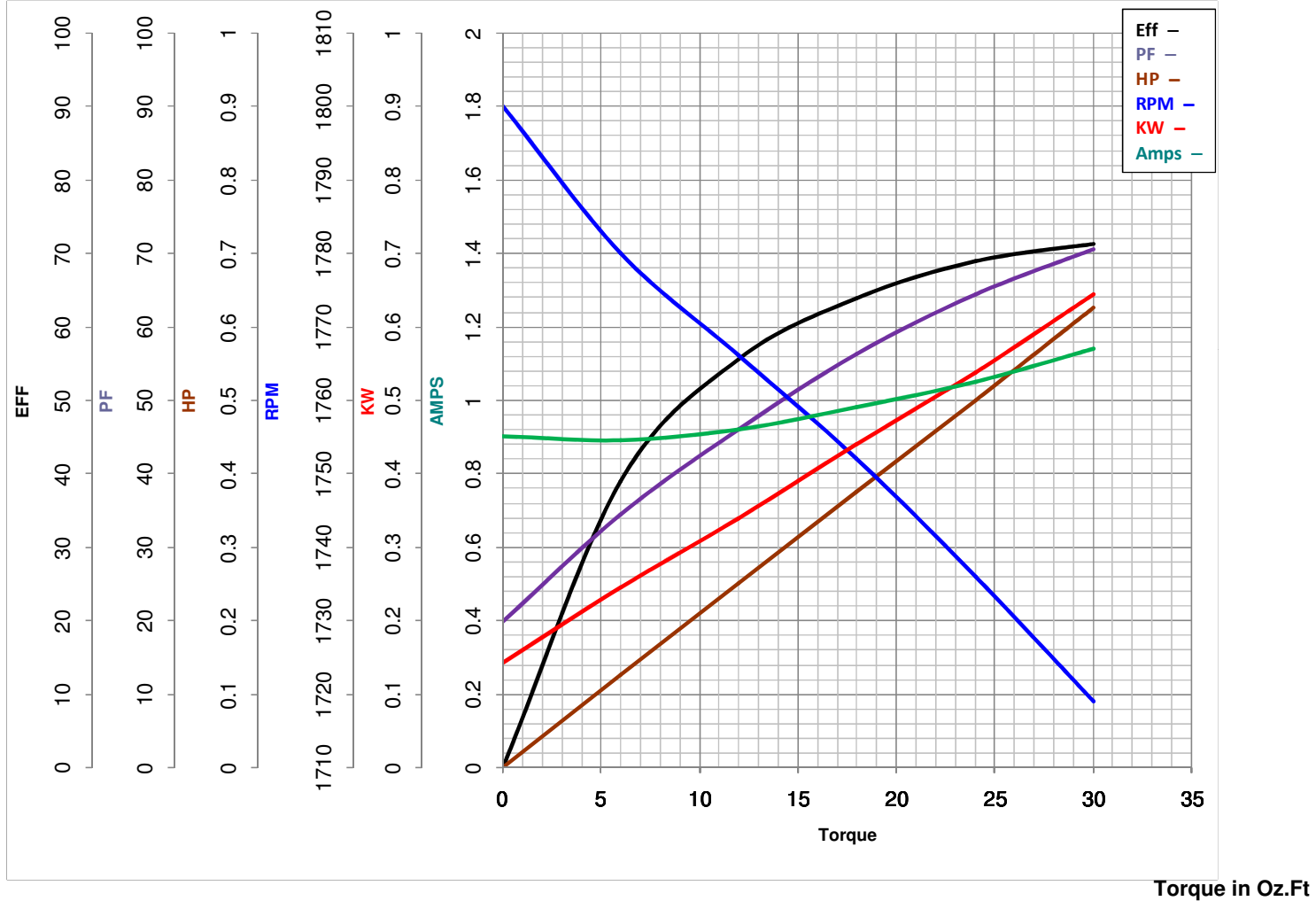
Volts

HP 0.50PHASE 360

HZ

0.5

HP

VOLTS 208-230/460Catalog No 102860.00HZ 60RPM 1725FL TORQUE 24 Oz.FtBD TORQUE 100.0 Oz.FtLR TORQUE 95.9 Oz.Ft

WINDING TE48415-3

FL AMPS 1.9-2/1PU TORQUE 91.3 Oz.FtLR AMPS 5.95

Date 5/22/2018