

PRODUCT INFORMATION PACKET



Model No: 114893.00
Catalog No: 114893.00
0.75 HP Special Voltage Motor, 3 phase, 3000 RPM, 220/380/440 V, 56C Frame, TEFC
50 Hz Motors



Regal and Leeson are trademarks of Regal Beloit Corporation or one of its affiliated companies.
©2020 Regal Beloit Corporation, All Rights Reserved. MC017097E





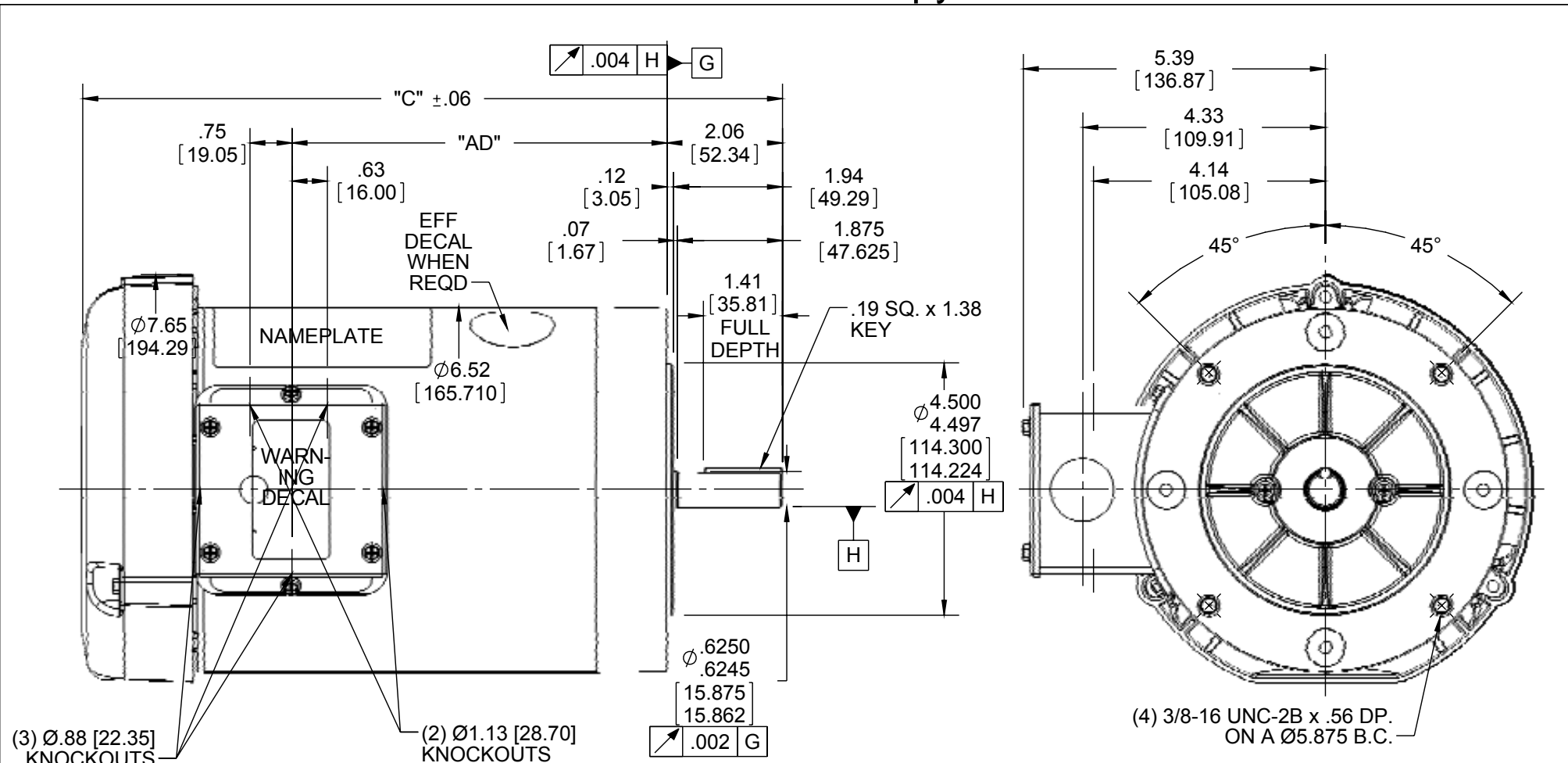
Nameplate Specifications

Output HP	0.75 Hp	Output KW	0.56 kW
Frequency	50 Hz	Voltage	220/380/440 V
Current	3.0/1.8/1.5 A	Speed	2850 rpm
Service Factor	1.15	Phase	3
Efficiency	72 %	Power Factor	73
Duty	Continuous	Insulation Class	B
Design Code	B	KVA Code	L
Frame	56C	Enclosure	Totally Enclosed Fan Cooled
Thermal Protection	No	Ambient Temperature	40 °C
Drive End Bearing Size	6203	Opp Drive End Bearing Size	6203
UL	Recognized	CSA	Y
CE	Y	IP Code	54

Technical Specifications

Electrical Type	Squirrel Cage Induction Run	Starting Method	Across The Line
Poles	2	Rotation	Reversible
Resistance Main	25.92 Ohms	Mounting	Round
Motor Orientation	Horizontal	Drive End Bearing	Ball
Opp Drive End Bearing	Ball	Frame Material	Rolled Steel
Shaft Type	NEMA 56	Overall Length	10.48 in
Frame Length	5.00 in	Shaft Diameter	0.625 in
Shaft Extension	1.88 in	Assembly/Box Mounting	F1 ONLY
Outline Drawing	028776-500	Connection Drawing	005381.01

This is an uncontrolled document once printed or downloaded and is subject to change without notice. Date Created:14/10/2020



(3) Ø.88 [22.35] KNOCKOUTS

(2) Ø1.13 [28.70] KNOCKOUTS

(4) 3/8-16 UNC-2B x .56 DP. ON A Ø5.875 B.C.

NOTE:
1) GASKETS THROUGHOUT

ORACLE REV
004

DASH NO.	"C"	"AD"
450	9.98	4.19
500	10.48	4.69
550	10.98	5.19
600	11.48	5.69
625	11.73	5.94

DASH NO.	"C"	"AD"
650	11.98	6.19
675	12.23	6.44
700	12.48	6.69
750	12.98	7.19
800	13.48	7.69

DRAWING REVISION E
ECO ECO-0092098
ECO DESCRIPTION
ADDED #450 (114176)
COPYRIGHT REGAL BELOIT AMERICA, INC. ALL RIGHTS RESERVED. PROPRIETARY AND CONFIDENTIAL INFORMATION - THIS DOCUMENT IS THE PROPERTY OF REGAL BELOIT AMERICA, INC. ("OWNER") AND CONTAINS OWNER'S PROPRIETARY INFORMATION. ANY PERSON, CORPORATION OR OTHER FIRM RECEIVING IT IS DEEMED, BY RECEIVING IT, TO AGREE THAT IT, AND/OR ANY PART OF IT, SHALL NOT BE DISCLOSED TO ANY PERSON, CORPORATION OR OTHER ENTITY, DUPLICATED, AND/OR USED, EXCEPT AS EXPRESSLY APPROVED IN WRITING IN ADVANCE BY OWNER. THIS DOCUMENT SHALL BE RETURNED TO OWNER UPON REQUEST. IT MAY BE SUBJECT TO CERTAIN RESTRICTIONS UNDER APPLICABLE EXPORT CONTROL LAWS AND REGULATIONS.

TOLERANCES UNLESS OTHERWISE SPECIFIED:
DEC. INCH mm ANGLE
.X ±0.1 [±2.5] ±0.5°
.XX ±0.01 [±0.25]
.XXX ±0.005 [±0.127]
.XXXX ±0.0005 [±0.0127]
REMOVE BURRS & BREAK SHARP EDGES: .003/.015 [.076/.381] X 45°
CORNER FILLETS: R.02 [.51]
MACHINED SURFACES: 125/3.2 INCH/mm
mm SHOWN IN [BRACKETS]

DRAWN BY KMM
DATE 08/01/07
APPROVED BY
DATE
REFERENCE
THIRD ANGLE PROJECTION

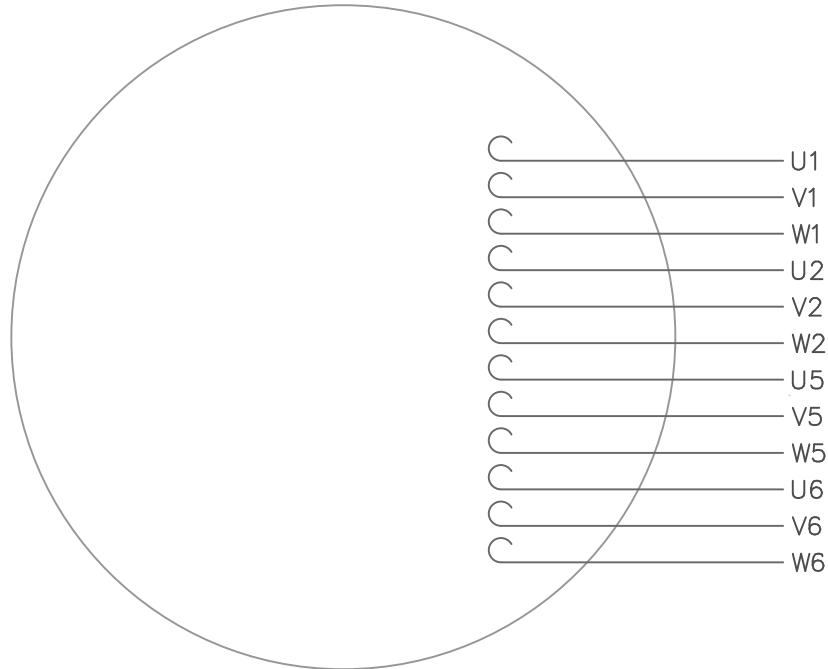
REGAL™ Regal Beloit America, Inc.

DESCRIPTION
OUTLINE
56C FRAME TEFC - "C" FACE

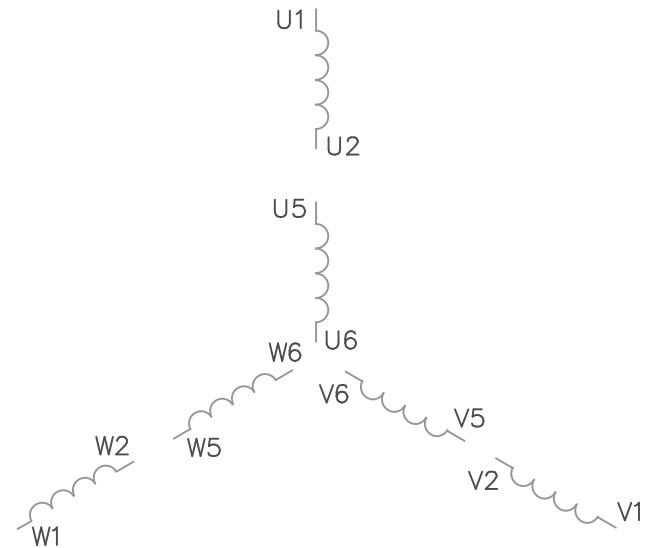
SIZE	DRAWING NUMBER	PROCESS/FINISH	GENERAL PURPOSE
A	028776		

SHEET 1 OF 1

VIEW FROM OUTSIDE OF MOTOR AT SWITCH END.



LINE LEADS



VOLTAGE	L1	L2	L3	JOIN
(2Δ) LOW	U1,W2 U5,W6	V1,U2 V5,U6	W1,V2 W5,V6	-----
(2Y) MEDIUM	U1,U5	V1,V5	W1,W5	(U2,V2,W2) (U6,V6,W6)
(1Δ) HIGH	U1,W6	V1,U6	W1,V6	(U2,U5) (V2,V5) (W2,W5)

TOLERANCES UNLESS OTHERWISE SPECIFIED

DECIMALS

.00 ± .01

.000 ± .005

.0000 ± .0005

FRACTIONS ± 1/64

ANGLES ± 1/2°

INCH/MM

LEESON ELECTRIC CORPORATION

DRAWN GWS 2/23/96

CH'K'D.

APPR.

SCALE 1=1

REF. 005352 PG 3

FMF

TITLE

MAT'L.

FINISH

EXT. WIRING DIAGRAM

TYPE "T" W/O PROTECTOR

DECAL - 080590

STOCK

SIZE

A

DRAWING NO.

005381-01

1 REDRAWN TO CURRENT STANDARDS

NO. REVISION

DBT

BY

05/30/97

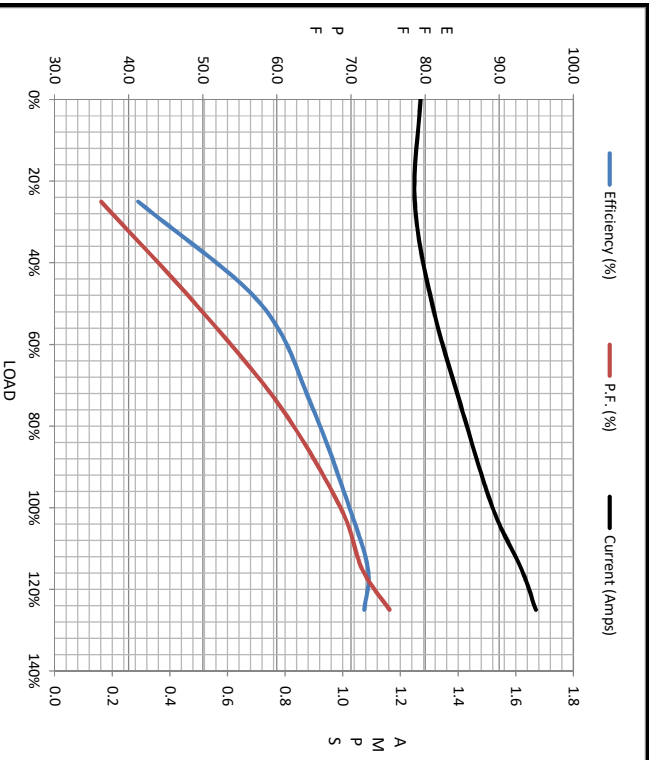
DATE

THIS DRAWING IN DESIGN AND DETAIL IS OUR PROPERTY AND MUST NOT BE USED EXCEPT IN CONNECTION WITH OUR WORK ALL RIGHTS OF DESIGN AND INVENTION ARE RESERVED



Motor Load Data						
Load	0%	25%	50%	75%	100%	LR
Current (Amps)	1.27	1.25	1.31	1.41	1.52	9.2
Torque (ft-lb)	0.00	48.8	96.4	145	193	548
RPM	3000	2964	2941	2918	2894	0
Efficiency (%)		41.3	57.8	64.7	69.8	71.8
P.F. (%)	16.6	36.3	49.0	60.4	68.6	75.2

Motor Speed Data						Information Block																										
LR	Pull-Up	BD	Rated	Idle		HP	Sync. RPM	Frame	Enclosure	Construction	Voltage	Frequency	Design	LR Code letter	Service Factor	Temp Rise @ FL	Duty	Ambient	Elevation	Rotor/Shaft wk ²	Ref Wdg	Sound Pressure @ 1M	VFD Rating	Outline Dwg	Conn. Diag	Additional Specifications:	R1	R2	X1	X2	Xm	
0	400	2200	2894	3000		0.8	3000	140	TEFC	NA	220/380/440	50	B	L	1.15	61	CONT	40	1,000	0.03	T632184 FR	999	NONE	028776-500	005381.01		0.0000	0.0000	0.0000	0.0000	0.0000	
Current (Amps)	9.2	8.1	5.1	1.52	1.27																											
Torque (ft-lb)	548	583	726	193	0.00																											



LR	Pull-Up	BD	Rated	Idle
0	400	2200	2894	3000
Current (Amps)	9.2	8.1	5.1	1.52
Torque (ft-lb)	548	583	726	193

