

PRODUCT INFORMATION PACKET



Model No: M1130055.00
Catalog No: M1130055.00
0.25 HP Sub-Fractional Motor, 1750 RPM, 90 V, 34 Frame, TEFC
Sub-Fractional Motors



Regal and Leeson are trademarks of Regal Beloit Corporation or one of its affiliated companies.
©2020 Regal Beloit Corporation, All Rights Reserved. MC017097E





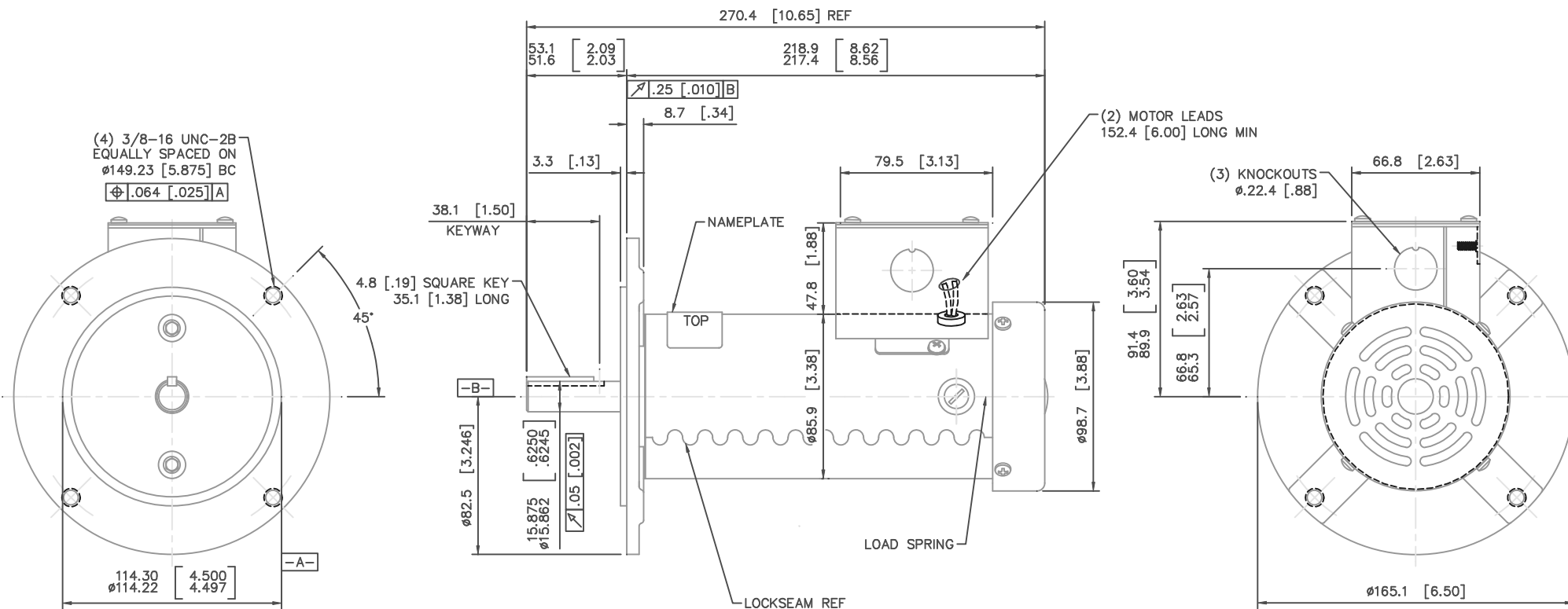
Nameplate Specifications

Output HP	0.25 Hp	Output KW	0.19 kW
Voltage	90 V	Current	2.7 A
Speed	1750 rpm	Service Factor	1
Efficiency	81.5 %	Duty	Continuous
Insulation Class	F	Frame	34
Enclosure	Totally Enclosed Fan Cooled	Thermal Protection	No
Ambient Temperature	40 °C	Drive End Bearing Size	6003
Opp Drive End Bearing Size	6201-13	UL	Recognized
CSA	Y	CE	Y

Technical Specifications

Rotation	Reversible	Mounting	Round
Overall Length	10.65 in	Frame Length	7.18 in
Shaft Diameter	0.625 in	Shaft Extension	2.06 in
Outline Drawing	M1030132-M1130055	Connection Drawing	M100508401

This is an uncontrolled document once printed or downloaded and is subject to change without notice. Date Created:30/12/2020

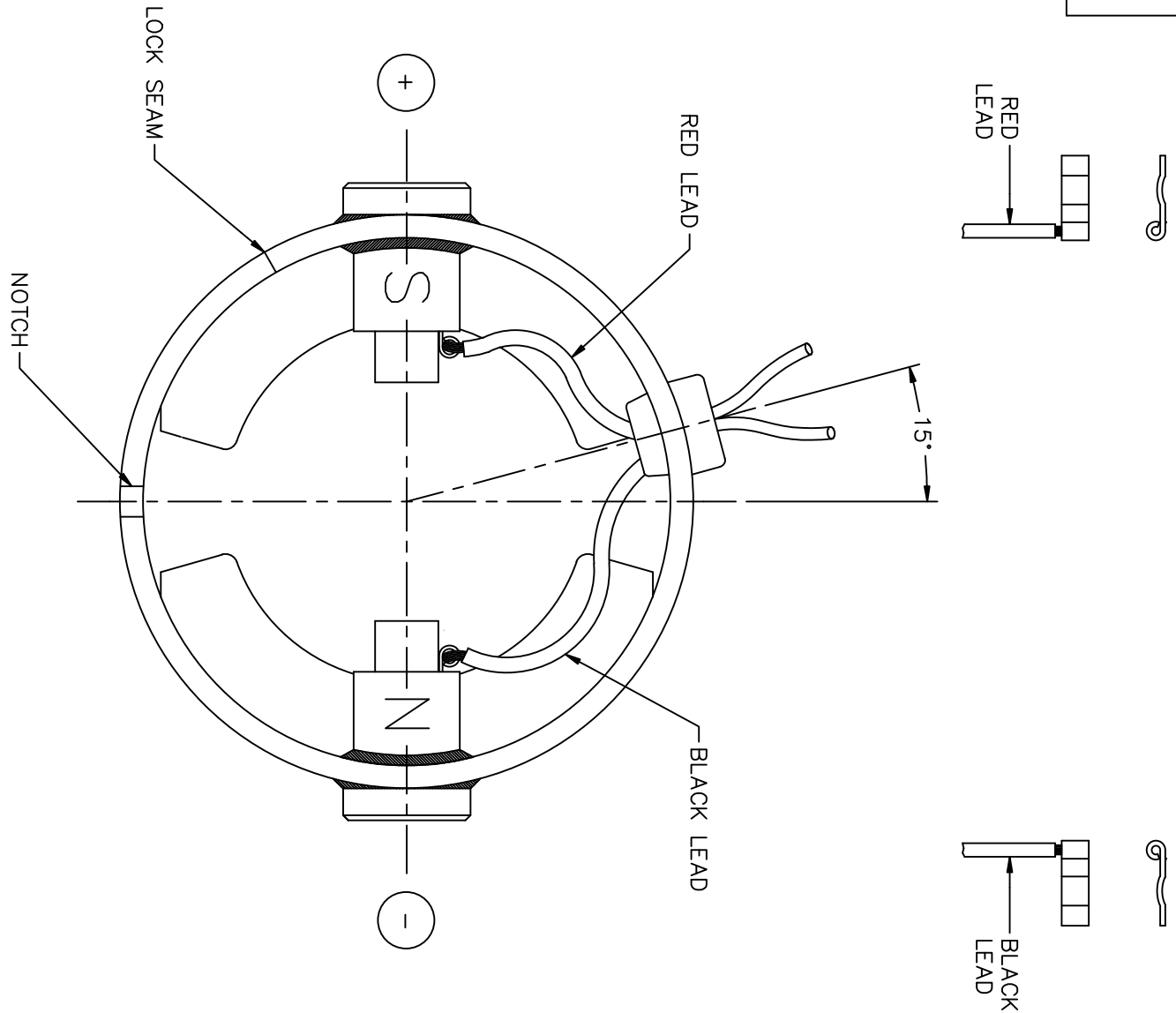


CATALOG NO.	VOLTS	HP	RPM
M1130055.00	90	1/4	1750
M1130120.00	180	1/4	1750


NO.	REVISION	BY & DATE	CH'K'D.	TOLERANCES UNLESS OTHERWISE SPECIFIED	FRACTIONS	REF.	FINISH	REV.	DRAWING NO.
10	CHNGD KNOCKOUTS FROM "2" TO "3", ECR 84283	VS 8/17/05	BC	DEC. INCHES METRIC	$\pm 1/64$	M1030138.00	STANDARD	10	M1030132.00
09	CORRECTED GEOMETRIC TOLERANCING	SAD 5/29/01	IPG		$\pm 1/2'$	CM34D17FC2			
08	CORRECTED SHAFT RUNOUT ECR 73437 AND	SAD 5/29/01	IPG						
REDRAWN TO CURRENT STANDARDS				.X	± 1	± 2.5	DRAWN	SPV 10/2/95	TITLE
07	REVISED WITH NEW FAN & FAN GUARD	SPV 2/10/97	DWF	.XX	$\pm .03$	$\pm .76$	APPR.		OUTLINE
06	ADDED METRIC DIMENSIONS	SPV 11/27/96	DWF	.XXX	$\pm .005$	$\pm .127$	R.F.P.		34 FRAME DC
NO. REVISION				.XXXX	$\pm .0005$	$\pm .0127$	SCALE	1=2	MAT'L.
THIS DRAWING IN DESIGN AND DETAIL IS OUR PROPERTY AND MUST NOT BE USED EXCEPT IN CONNECTION WITH OUR WORK. ALL RIGHTS OF DESIGN AND INVENTION ARE RESERVED. THIS IS AN ELECTRONICALLY GENERATED DOCUMENT - DO NOT SCALE THIS PRINT.									

LEESON ELECTRIC CORPORATION

DC MOTORS



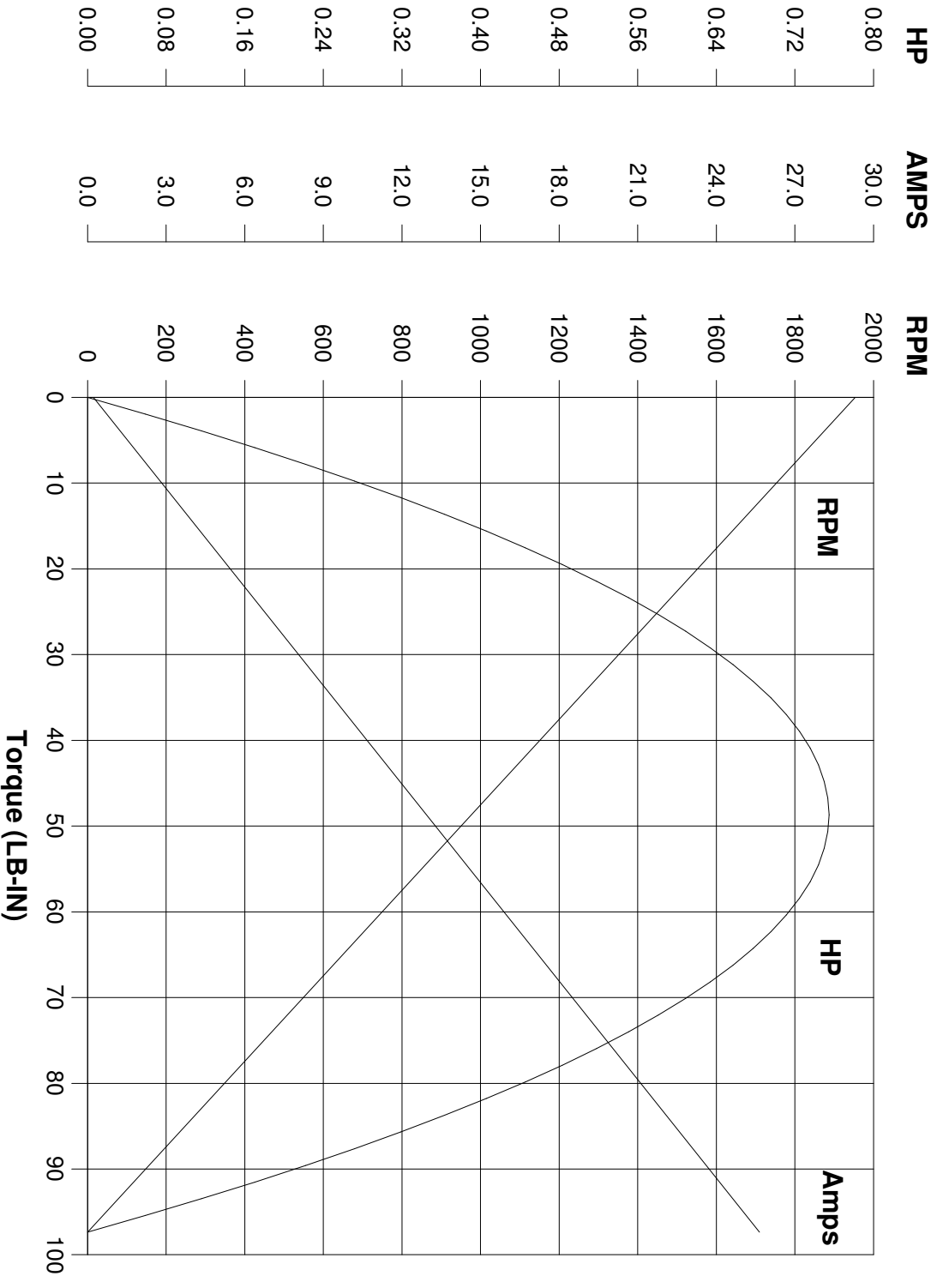
EXTERNAL CONNECTIONS FOR CCW ROTATION VIEWING
LEAD END OF MOTOR WITH RED LEAD POSITIVE (+)
AND BLACK LEAD NEGATIVE (-) FOR CW ROTATION
POLARITY

				TOLERANCES UNLESS SPECIFIED			ELECTRIC MOTORS GEARMOTORS AND DRIVES	DRAWN PG 10/30/89	
				DEC.	INCHES			CHK	
				.X	±.1			APPD PW 10/31/89	
03	REMOVED BARRIERS, NOT NEEDED, ISAAC 10-1959	IPG 5/14/2010	SK	.XX	±.01	TITLE	CONNECTION DIAGRAM	SCALE 1=1	
02	CORRECTED "N" & "S" PER ECR 83508	SMB 12/16/03	IPG	.XXX	±.005			REF 15008-01-117	
01	REDRAWN ON CAD	AJR 06/30/99		.XXXX	±.0005	MAT'L.		FMF CM31D17NZ1	
NO.	REVISION	BY & DATE	CHK	ANG	±1/2"	FINISH		PREV	
THIS DRAWING IN DESIGN AND DETAIL IS OUR PROPERTY AND MUST NOT BE USED EXCEPT IN CONNECTION WITH OUR WORK ALL RIGHTS OF DESIGN AND INVENTION ARE RESERVED THIS IS AN ELECTRONICALLY GENERATED DOCUMENT - DO NOT SCALE THIS PRINT				RFP	CAD FILE M100508401		SIZE	DRAWING NO.	REV.
				DIST			A	M1005084.01	03

LEESON ELECTRIC CORPORATION

TYPICAL PERFORMANCE CURVE FOR DIRECT CURRENT PERMANENT MAGNET MOTOR

Model No. CM34D17FC2 **Catalog No.** M1130055.00
HP 0.250 **RPM** 1750 **DC Volts** 90.0 **N.P. FLA** 2.70
F.F. 1.38 **Encl** TEFC **Type** DF **S.F.** 1.00
Max. Amb. 40.0 Deg C **Insul.** F **Frame** 34 **Duty** CONT



Ra <u>3.1500</u> Ohms La <u>15.80</u> mHenrys Ja <u>0.6440</u> LB-IN ^{1/2} Ke <u>45.58</u> V/KRPM	Kt <u>3.853</u> LB-IN/AMP Imax <u>30.4</u> AMPS Allowed FL Torque <u>9.000</u> LB-IN FL EFF <u>81.50</u> %
---	---

Winding W- MD34271-1 **Prepared by** V. Boehlen **Date** 05-09-2005