

# PRODUCT INFORMATION PACKET



Model No: 192011.00  
Catalog No: 192011.00  
0.25 HP General Purpose, 3 phase, 1800 RPM, 230/460 V, 63 Frame, TEFC  
Aluminium TEFC Motors



Regal and Leeson are trademarks of Regal Beloit Corporation or one of its affiliated companies.  
©2020 Regal Beloit Corporation, All Rights Reserved. MC017097E

The Regal logo is located in the bottom right corner. It features the word "REGAL" in a white, bold, sans-serif font, set against a dark grey, trapezoidal background. The background of the entire page on the right side is a blue gradient with a fine, repeating pattern.



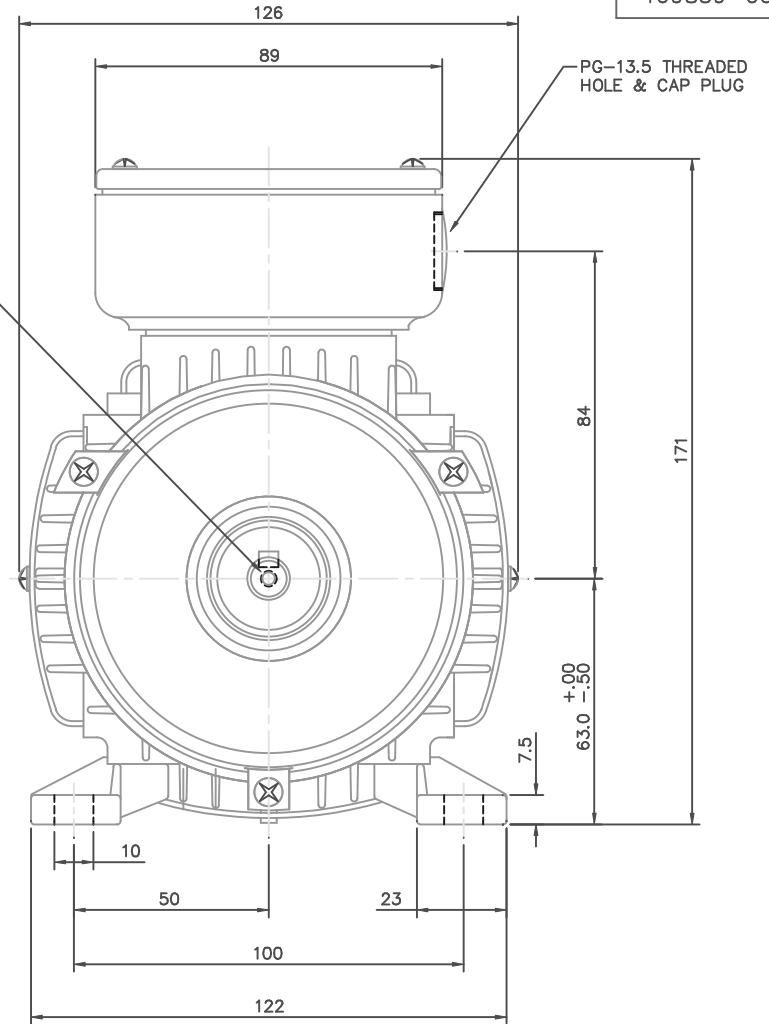
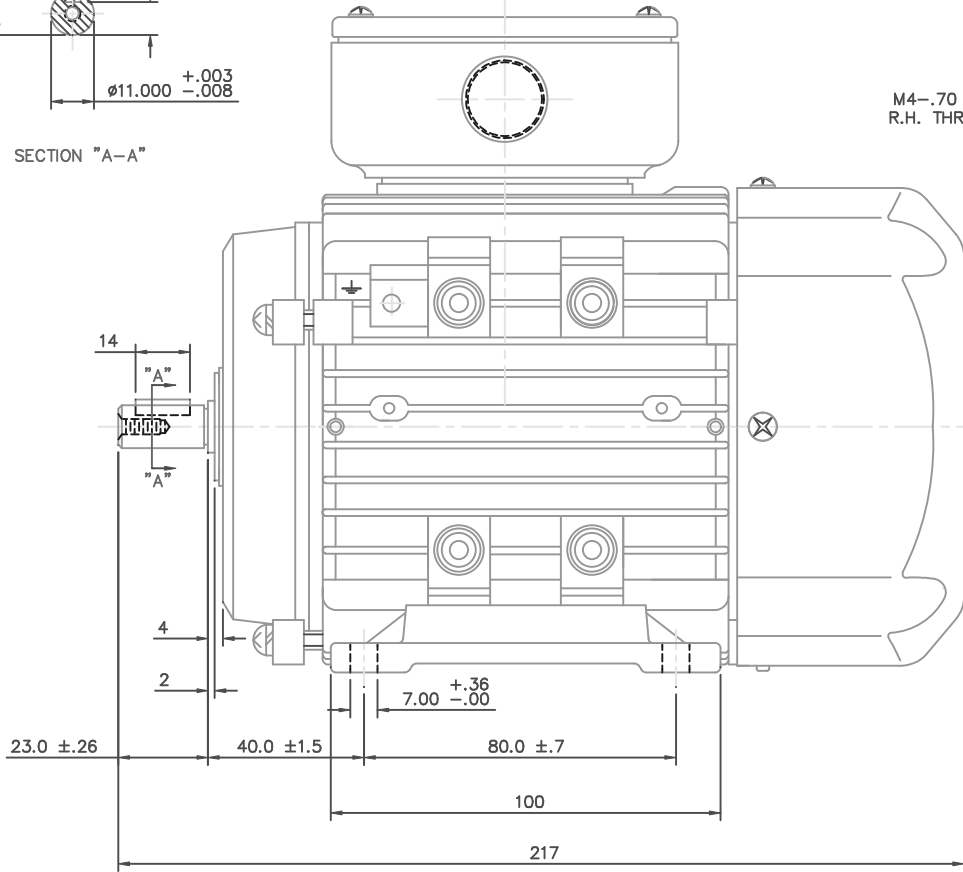
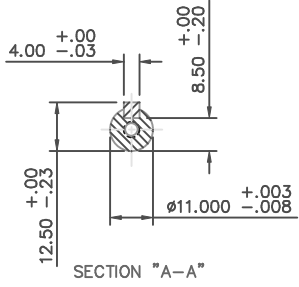
### Nameplate Specifications

Output HP	0.25 Hp	Output KW	0.19 kW
Frequency	60 Hz	Voltage	230/460 V
Current	1.0/0.50 A	Speed	1700 rpm
Service Factor	1.15	Phase	3
Efficiency	68 %	Power Factor	62.5
Duty	Continuous	Insulation Class	F
Design Code	B	KVA Code	H
Frame	63	Enclosure	Totally Enclosed Fan Cooled
Thermal Protection	No	Ambient Temperature	40 °C
Drive End Bearing Size	6202	Opp Drive End Bearing Size	6202
UL	Recognized	CSA	Y
CE	Y	IP Code	43

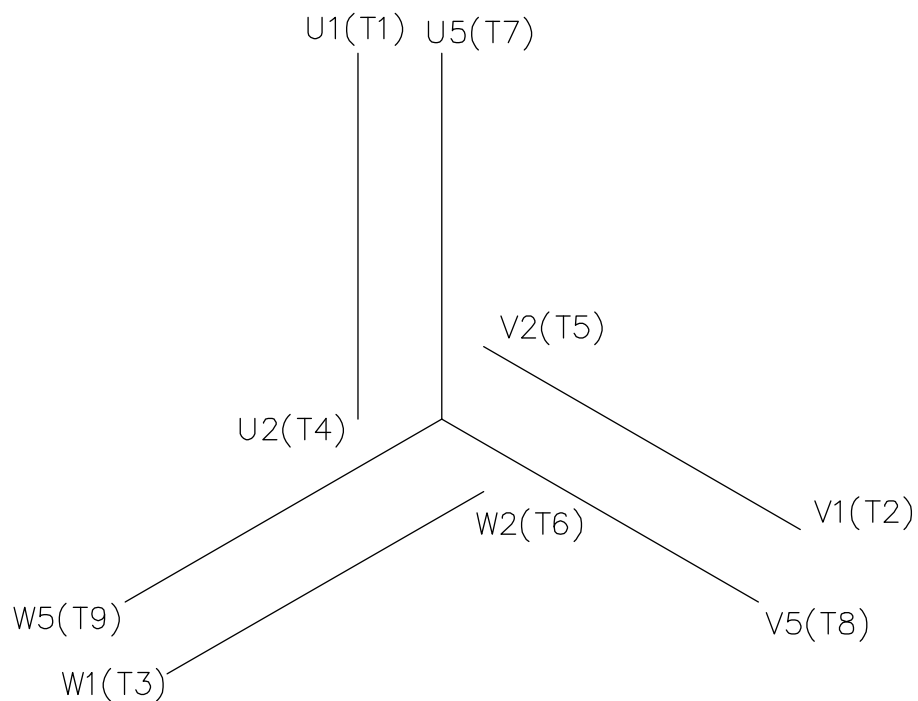
### Technical Specifications

Electrical Type	Squirrel Cage Inverter Rated	Starting Method	Line Or Inverter
Poles	4	Rotation	Reversible
Resistance Main	26.59 Ohms	Mounting	B3
Motor Orientation	Horizontal	Drive End Bearing	Ball
Opp Drive End Bearing	Ball	Frame Material	Aluminum
Shaft Type	IEC	Overall Length	8.54 in
Frame Length	4.44 in	Shaft Diameter	0.437 in
Shaft Extension	0.9 in	Assembly/Box Mounting	F3
Outline Drawing	16985900	Connection Drawing	005465.01

This is an uncontrolled document once printed or downloaded and is subject to change without notice. Date Created:14/10/2020

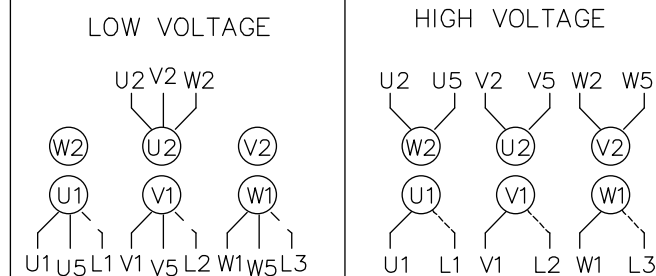


		TOLERANCES UNLESS SPECIFIED		LEESON	ELECTRIC MOTORS GEARMOTORS AND DRIVES	DRAWN			
		DEC.	METRIC			ADS 01/18/02			
		.X	±2.5			CHK			
		.XX	±.76	TITLE	METRIC MOTOR OUTLINE, IMB3 IEC-63 FRAME RIGID MOUNT	APPD			
		.XXX	±.127	MAT'L	ALUMINUM	SCALE 1=1.25			
		.XXXX	±.0127	FINISH		REF OSVC-300-554			
NO.	REVISION	BY & DATE	CHK	ANG	±1/2'	FPM	LEESON STOCK		
THIS DRAWING IN DESIGN AND DETAIL IS OUR PROPERTY AND MUST NOT BE USED EXCEPT IN CONNECTION WITH OUR WORK. ALL RIGHTS OF DESIGN AND INVENTION ARE RESERVED. THIS IS AN ELECTRONICALLY GENERATED DOCUMENT - DO NOT SCALE THIS PRINT				RFP	CAD FILE	16985900	SIZE	DRAWING NO.	REV.
			DIST			B	169859-00		



REF. DECAL (IEC) 080644  
REF. DECAL (NEMA) 080446

### IEC MARKINGS



LINE VOLTAGE	L1	L2	L3	JOIN		
TERMINAL	U1	V1	W1	W2	U2	V2
LOW	U1,U5	V1,V5	W1,W5	---	U2,V2,W2	---
HIGH	U1	V1	W1	U2,U5	V2,V5	W2,W5

### NEMA MARKINGS



LINE VOLTAGE	L1	L2	L3	JOIN		
TERMINAL	U1	V1	W1	W2	U2	V2
LOW	T1, T7	T2, T8	T3, T9	---	T4,T5,T6	---
HIGH	T1	T2	T3	T4, T7	T5, T8	T6, T9

TOLERANCES UNLESS SPECIFIED

DEC.	INCHES
.X	±.1
.XX	±.01
.XXX	±.005
.XXXX	±.0005
ANG	±1/2'



ELECTRIC MOTORS  
GEARMOTORS  
AND DRIVES

DRAWN MGM 12/3/02

CHK

APPD

SCALE 1=1

REF 00537703

FMF

PREV

TITLE EXTERNAL WIRING DIAGRAM  
3 PHASE - DUAL VOLTAGE - W/TERM BLOCK

MAT'L. IEC/NEMA MARKINGS

FINISH THERMAL TRANSFER

01 NEMA LV CONNECTION WAS INCORRECT RLW 8/4/03

NO. REVISION BY & DATE

THIS DRAWING IN DESIGN AND DETAIL IS OUR PROPERTY AND MUST NOT BE USED EXCEPT IN CONNECTION WITH OUR WORK ALL RIGHTS OF DESIGN AND INVENTION ARE RESERVED THIS IS AN ELECTRONICALLY GENERATED DOCUMENT - DO NOT SCALE THIS PRINT

RFP  
DIST

CAD FILE 00546501

SIZE A DRAWING NO. 005465-01 REV. 01



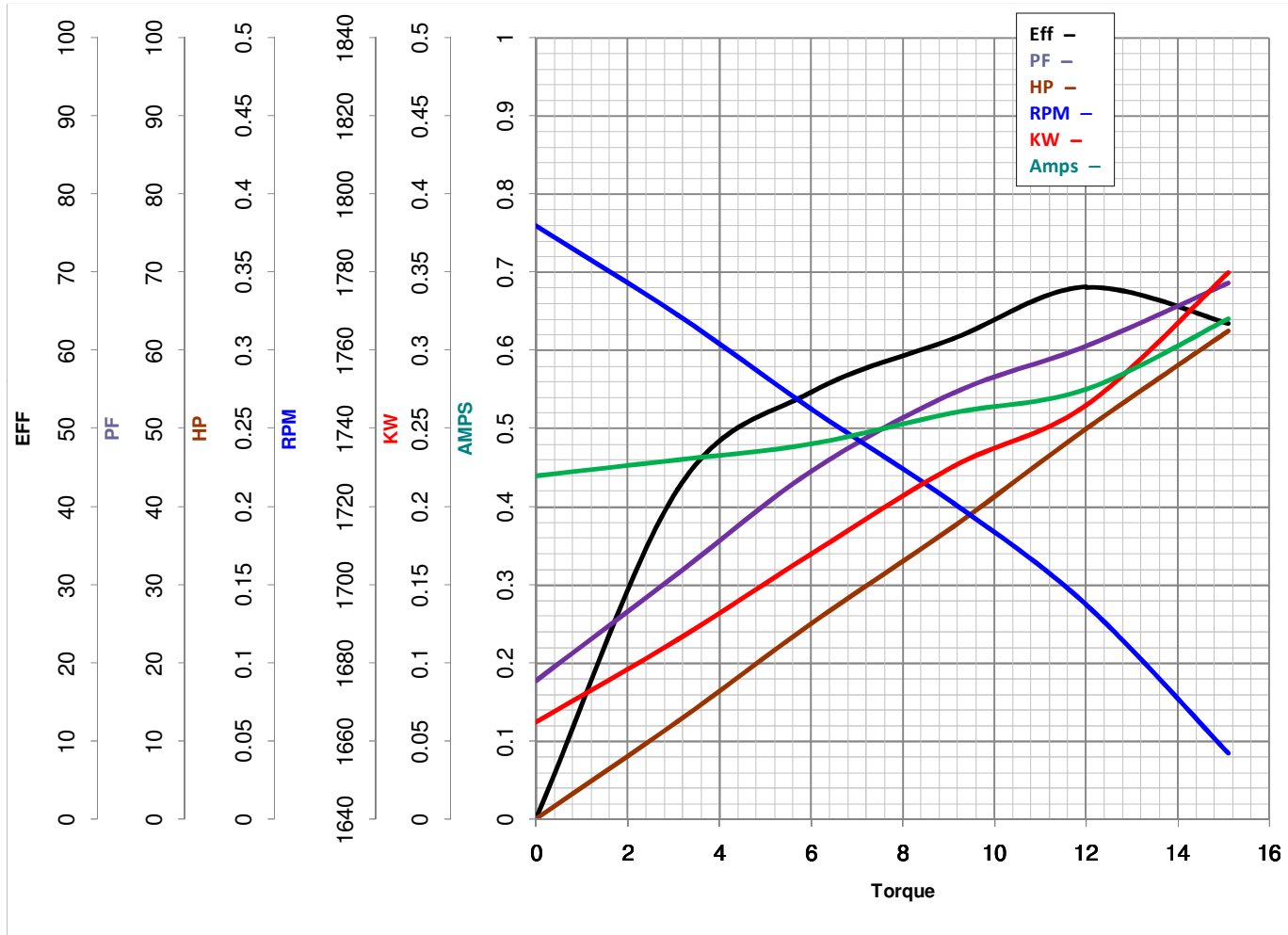
**LEESON ELECTRIC CORPORATION**  
 TYPICAL PERFORMANCE CURVE for AC MOTOR

Model No 192011.00

Catalog No 192011.00

Curve at 460 Volts      HP 0.25&0.25      PHASE 3  
60 HZ  
0.25 HP      VOLTS 230/460&200/400

HZ 60&50      RPM 1700&1380



Torque in Oz.Ft

FL TORQUE 12 Oz.Ft  
 BD TORQUE 33.0 Oz.Ft  
 LR TORQUE 29.5 Oz.Ft

FL AMPS 1.0/0.5  
 PU TORQUE 27.6 Oz.Ft  
 LR AMPS 2.2

WINDING QT6341-3

Date 5/23/2018