

PRODUCT INFORMATION PACKET



Model No: M1130054.00
Catalog No: M1130054.00
0.17 HP Sub-Fractional Motor, 1750 RPM, 90 V, 34 Frame, TENV
Sub-Fractional Motors



Regal and Leeson are trademarks of Regal Beloit Corporation or one of its affiliated companies.
©2020 Regal Beloit Corporation, All Rights Reserved. MC017097E





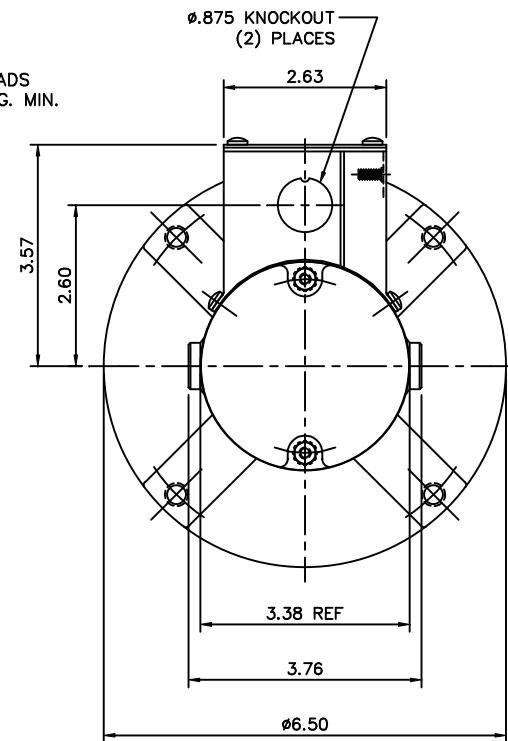
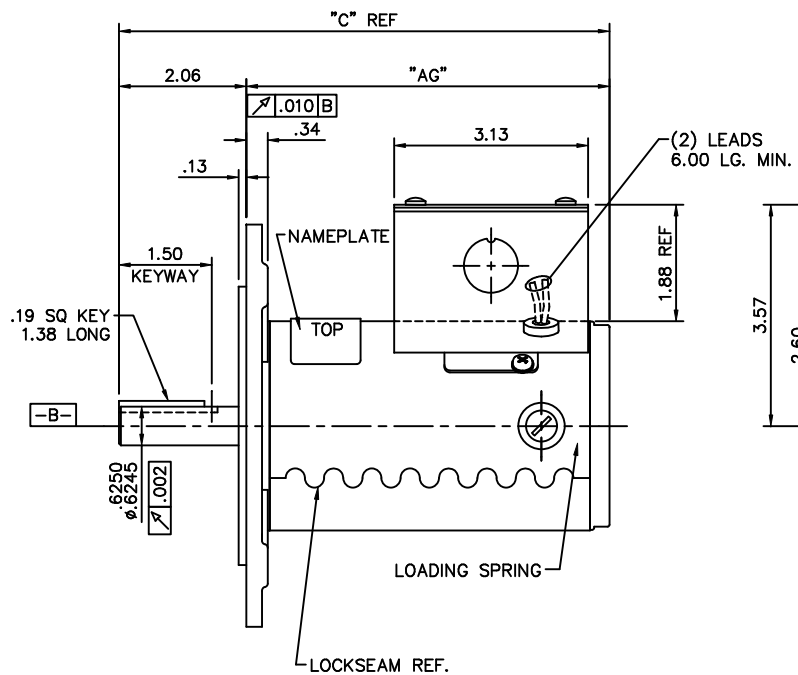
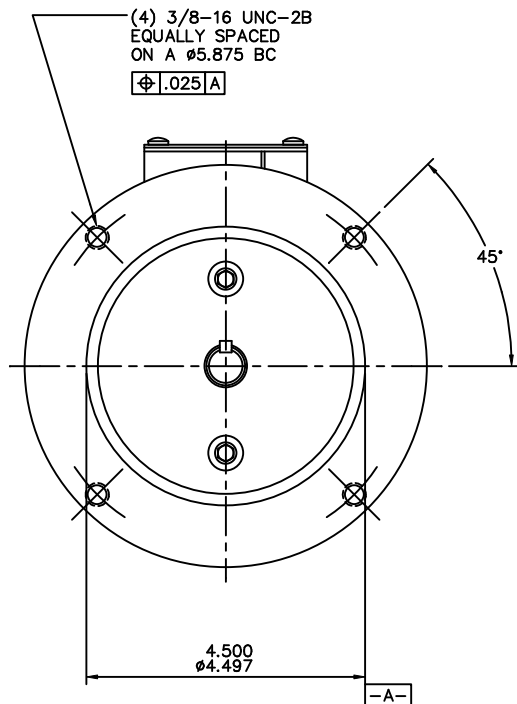
Nameplate Specifications

Output HP	0.17 Hp	Output KW	0.13 kW
Voltage	90 V	Current	1.7 A
Speed	1750 rpm	Service Factor	1
Efficiency	78.4 %	Duty	Continuous
Insulation Class	H	Frame	34
Enclosure	Totally Enclosed Non Ventilated	Thermal Protection	No
Ambient Temperature	40 °C	Drive End Bearing Size	6003
Opp Drive End Bearing Size	608	UL	Recognized
CSA	Y	CE	Y


Technical Specifications

Rotation	Reversible	Mounting	Round
Overall Length	8.93 in	Frame Length	6.18 in
Shaft Diameter	0.625 in	Shaft Extension	2.06 in
Outline Drawing	M1030138-M1130054	Connection Drawing	M100508401

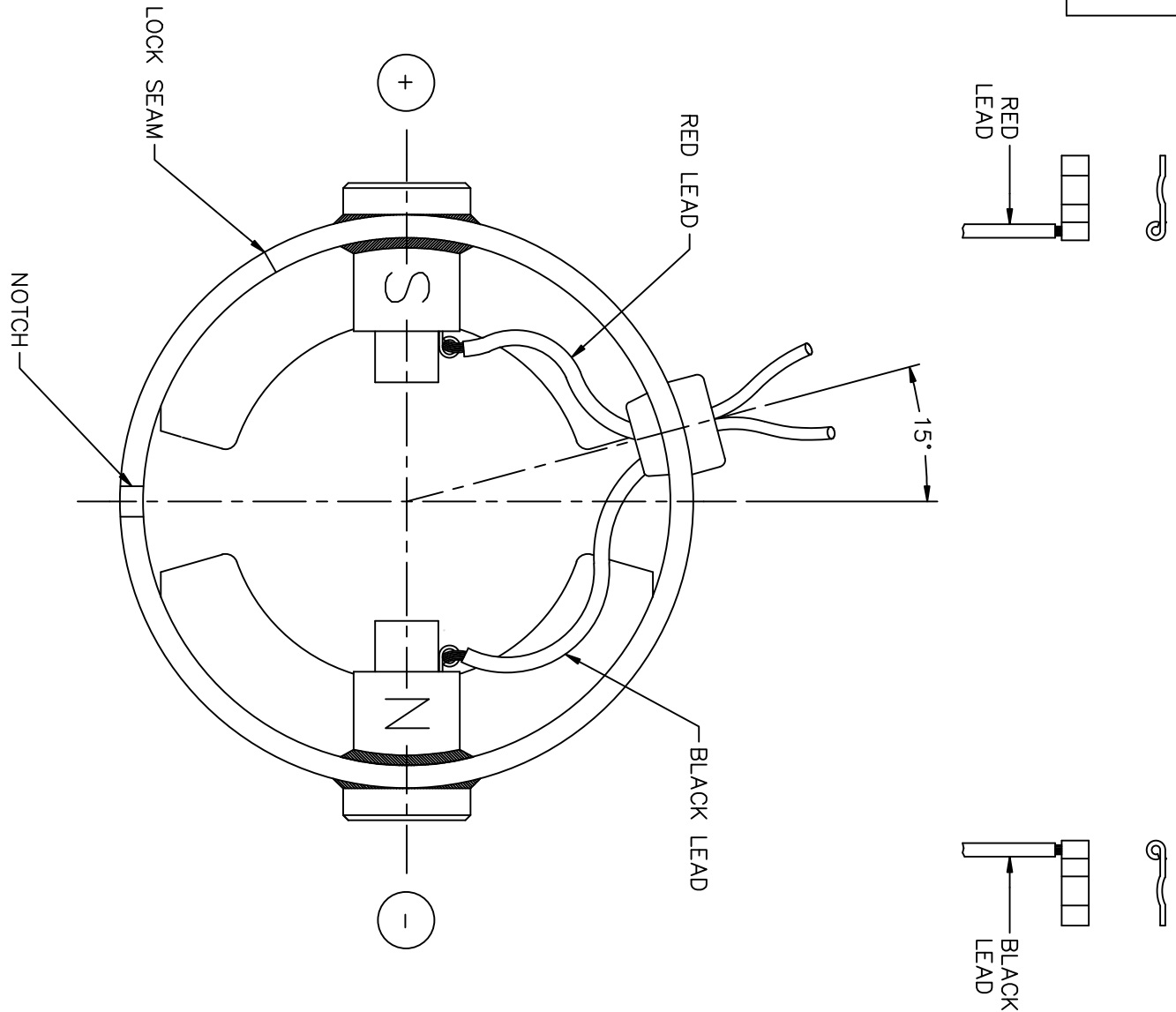
This is an uncontrolled document once printed or downloaded and is subject to change without notice. Date Created:30/12/2020



CATALOG NO.	VOLTS	HP	RPM	"C"	"AG"
M1130054.00	90	1/6	1750	8.93	6.87
M1130119.00	180	1/6	1750	8.93	6.87

07	CONDUIT BOX STUD WAS ON OPPOSITE WALL. ECR89555	RPB	2/14/07	BC	TOLERANCES UNLESS SPECIFIED	 ELECTRIC MOTORS GEARMOTORS AND DRIVES	DRAWN	PG 11/17/89			
06	CORRECTED GEOMETRIC DIMENSIONING	SAD	5/29/01	IPG	DEC.		INCHES	CHK			
05	CORRECTED SHAFT RUNOUT ECR 73437	SAD	5/3/01	IPG	.X	±.1	APPD	PW 1/5/90			
04	CORRECTED NUMBER OF LEADS FROM 3 TO 2	IPG	4/27/01	SAD	.XX	±.03	TITLE	SCALE 1=2			
03	REDRAWN AND ADDED NEW CONDUIT BOX	SPV	9/29/95		.XXX	±.005	OUTLINE				
02	ITEMIZED STOCK REFERENCES	SPV	8/1/91		.XXXX	±.0005	34 FRAME D.C.				
NO.	REVISION	BY & DATE	CHK	ANG	±1/2"	FINISH	FMF	CM34D17NC2			
THIS DRAWING IN DESIGN AND DETAIL IS OUR PROPERTY AND MUST NOT BE USED EXCEPT IN CONNECTION WITH OUR WORK ALL RIGHTS OF DESIGN AND INVENTION ARE RESERVED THIS IS AN ELECTRONICALLY GENERATED DOCUMENT - DO NOT SCALE THIS PRINT						RFP	CAD FILE	M1030138	SIZE	DRAWING NO.	REV.
						DIST	B	M1030138.00	07		

DC MOTORS



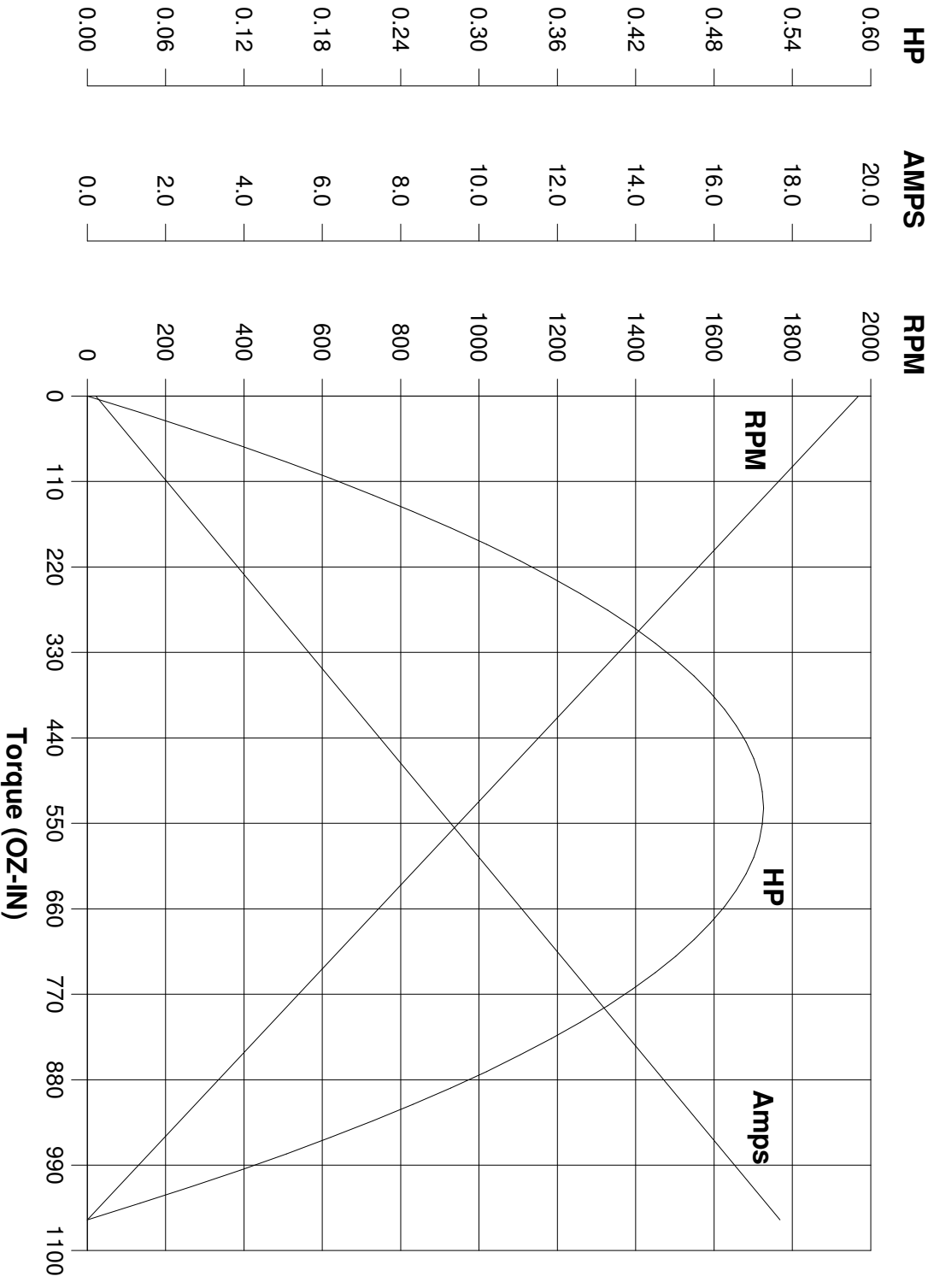
EXTERNAL CONNECTIONS FOR CCW ROTATION VIEWING
LEAD END OF MOTOR WITH RED LEAD POSITIVE (+)
AND BLACK LEAD NEGATIVE (-) FOR CW ROTATION
POLARITY

				TOLERANCES UNLESS SPECIFIED		LEESON ELECTRIC MOTORS GEARMOTORS AND DRIVES	DRAWN PG 10/30/89		
				DEC.	INCHES		CHK		
				.X	±.1		APPD PW 10/31/89		
03	REMOVED BARRIERS, NOT NEEDED, ISAAC 10-1959	IPG 5/14/2010	SK	.XX	±.01	TITLE CONNECTION DIAGRAM	SCALE 1=1		
02	CORRECTED "N" & "S" PER ECR 83508	SMB 12/16/03	IPG	.XXX	±.005		REF 15008-01-117		
01	REDRAWN ON CAD	AJR 06/30/99		.XXXX	±.0005	MAT'L.	FMF CM31D17NZ1		
NO.	REVISION	BY & DATE	CHK	ANG	±1/2'	FINISH	PREV		
THIS DRAWING IN DESIGN AND DETAIL IS OUR PROPERTY AND MUST NOT BE USED EXCEPT IN CONNECTION WITH OUR WORK ALL RIGHTS OF DESIGN AND INVENTION ARE RESERVED THIS IS AN ELECTRONICALLY GENERATED DOCUMENT - DO NOT SCALE THIS PRINT				RFP	CAD FILE	M100508401	SIZE	DRAWING NO.	REV.
				DIST			A	M1005084.01	03

LEESON ELECTRIC CORPORATION

TYPICAL PERFORMANCE CURVE FOR DIRECT CURRENT PERMANENT MAGNET MOTOR

Model No. CM34D17NC6 **Catalog No.** M1130054.00
HP 0.167 **RPM** 1750 **DC Volts** 90.0 **N.P. FLA** 1.70
F.F. 1.38 **Encl** TENV **Type** DN **S.F.** 1.00
Max. Amb. 40.0 Deg C **Insul.** H **Frame** 34 **Duty** Cont



Ra <u>4.7000</u> Ohms	Kt <u>60.71</u> OZ-IN/AMP
La <u>20.00</u> mHenrys	Imax <u>23.6</u> AMPS Allowed
Ja <u>23.16</u> OZ-IN ²	FL Torque <u>96.00</u> OZ-IN
Ke <u>44.89</u> V/KRPM	FL EFF <u>78.40</u> %

Winding W- MD34268-1 **Prepared by** V. Boehlen **Date** 05-06-2005