

PRODUCT INFORMATION PACKET



Model No: 110492.00
Catalog No: 110492.00
0.50 HP Agricultural Motor, 1 phase, 1800 RPM, 115/208-230 V, 56C Frame, TEFC
Agricultural Motors



Regal and Leeson are trademarks of Regal Beloit Corporation or one of its affiliated companies.
©2020 Regal Beloit Corporation, All Rights Reserved. MC017097E

REGAL



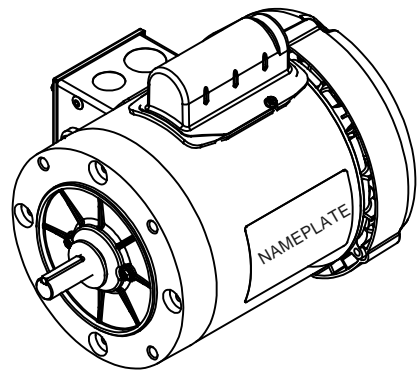
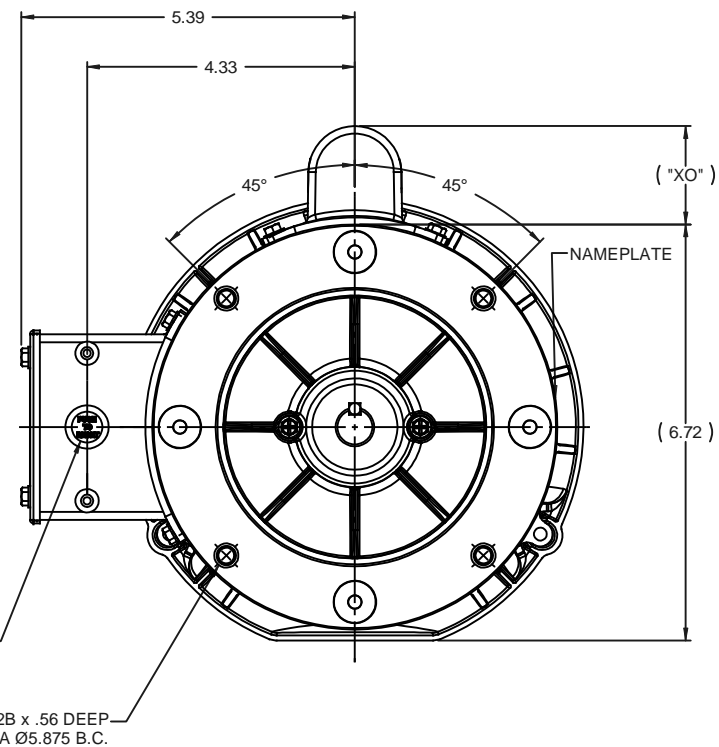
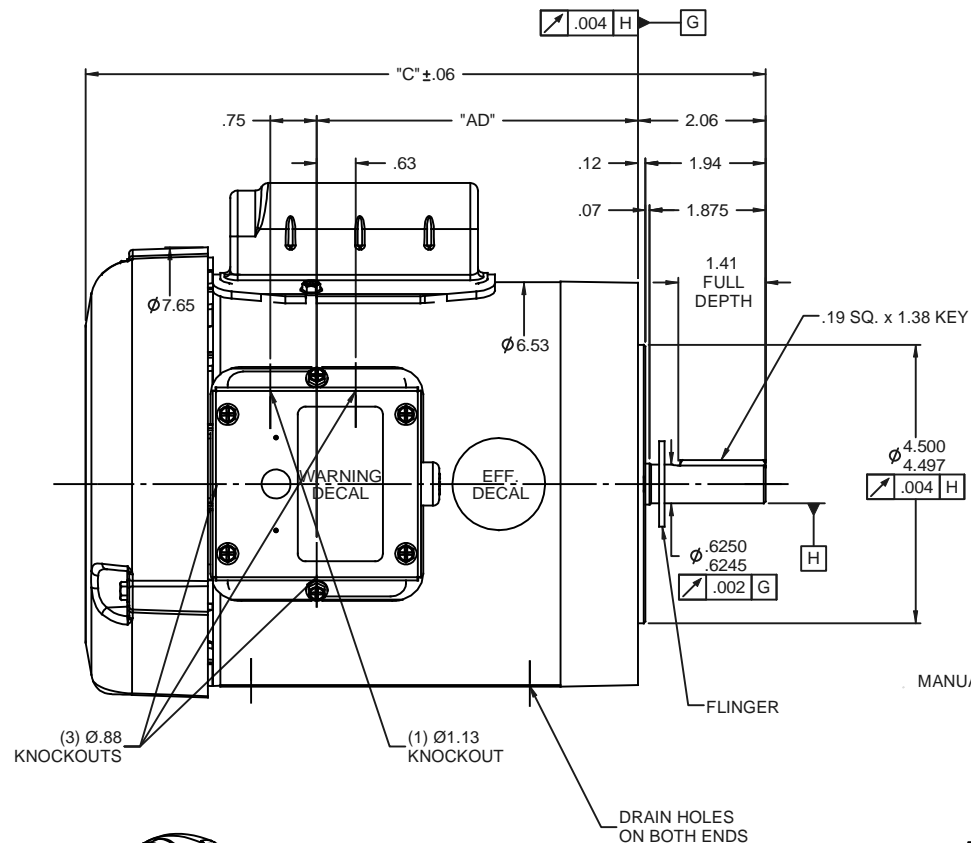
Nameplate Specifications

Output HP	0.50 Hp	Output KW	0.37 kW
Frequency	60 Hz	Voltage	115/208-230 V
Current	8.8/4.4 A	Speed	1725 rpm
Service Factor	1.15	Phase	1
Efficiency	66 %	Power Factor	58
Duty	Continuous	Insulation Class	B
Design Code	N	KVA Code	L
Frame	56C	Enclosure	Totally Enclosed Fan Cooled
Thermal Protection	Manual	Ambient Temperature	40 °C
Drive End Bearing Size	6203	Opp Drive End Bearing Size	6203
UL	Recognized	CSA	Y
CE	N	IP Code	43

Technical Specifications

Electrical Type	Capacitor Start Induction Run	Starting Method	Across The Line
Poles	4	Rotation	Selective Counterclockwise
Resistance Main	3.4 Ohms	Mounting	Round
Motor Orientation	Horizontal	Drive End Bearing	Ball
Opp Drive End Bearing	Ball	Frame Material	Rolled Steel
Shaft Type	NEMA 56	Overall Length	10.98 in
Frame Length	5.50 in	Shaft Diameter	0.625 in
Shaft Extension	1.88 in	Assembly/Box Mounting	F1 ONLY
Connection Drawing	005003.03	Outline Drawing	028865-550A

This is an uncontrolled document once printed or downloaded and is subject to change without notice. Date Created:14/10/2020

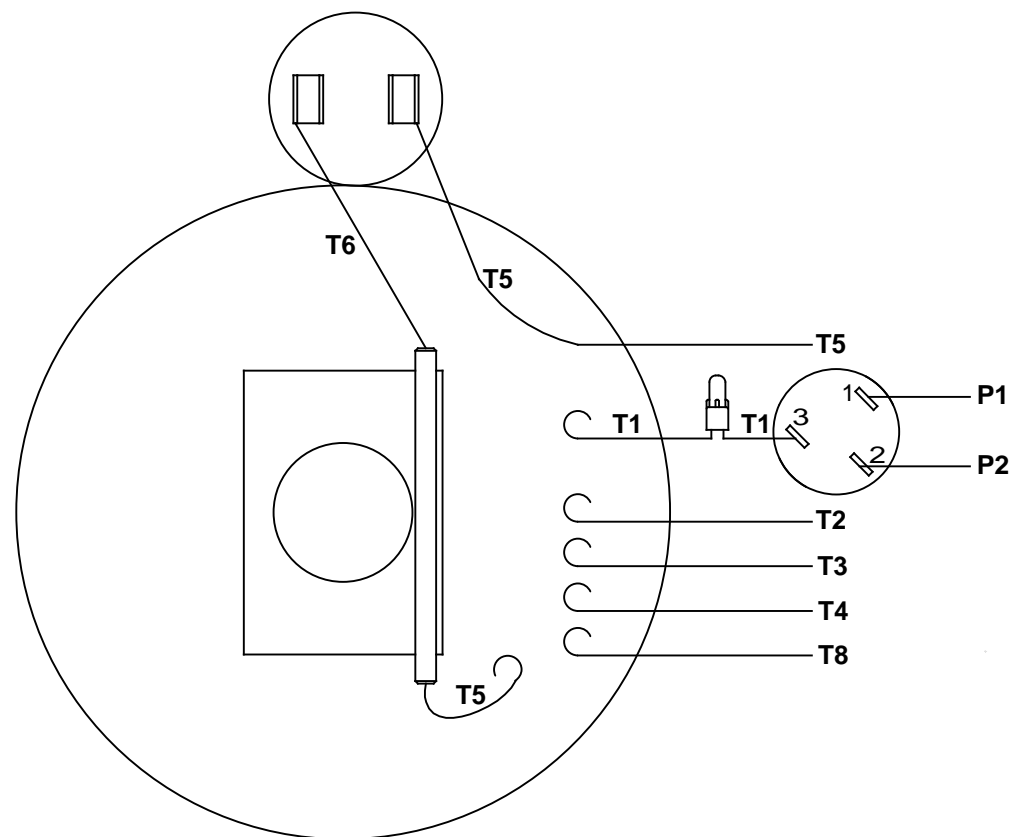


DASH NO.	"C"	"AD"	CAP DASH.	"XO"
550	10.98	5.19		
600	11.48	5.59		
650	11.98	6.19	A	1.61
700	12.48	6.69	B	2.08
750	12.98	7.19	C	2.32
800	13.48	7.69		
850	13.98	8.19		

NOTES:
 1) GASKETS THROUGHOUT

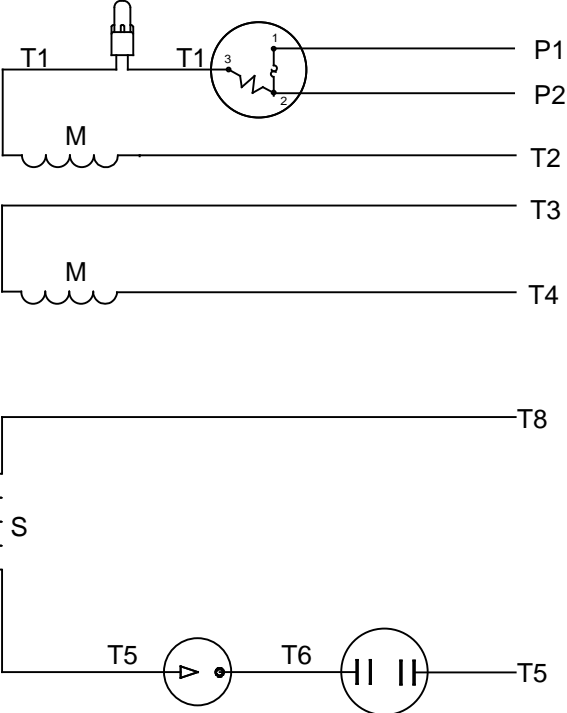
			TOLERANCES UNLESS SPECIFIED	ELECTRIC MOTORS GEARMOTORS AND DRIVES	DRAWN GRB 08/18/2008
			DEC INCHES		CHK DJ 08/18/2008
			X ±.1	TITLE OUTLINE - 56C FRAME TEFC - "C" FACE FARM DUTY	APPR
			.XX ±.03		SCALE 1:2
			.XXX ±.005		REF 033641
01	ADDED "XO" TABLE	GRB 12/10/2008	DJ .XXX ±.0005	MATL	FMF 110492.00
REVISION			BY & DATE	CHK ANG ±1/2"	PAGE OF
THIRD ANGLE PROJECTION			RFP 08/18/2008	FINISH	SIZE B
			NETWORK FILE NAME	PREV	DRAWING NO 028865
					REV 01

VIEW FROM OUTSIDE OF MOTOR AT SWITCH END


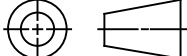


RBC PROPRIETARY AND CONFIDENTIAL INFORMATION
This document is the property of REGAL BELOIT CORPORATION ("RBC") including its subsidiaries and divisions and contains proprietary information of RBC. This document is loaned on the express condition that neither it nor the information contained therein shall be disclosed to others without the express written consent of RBC, and that the information shall be used by the recipient only as approved expressly by RBC. This document shall be returned to RBC upon its request. This document may be subject to certain restrictions under U.S. export control laws and regulations.

LINE LEADS



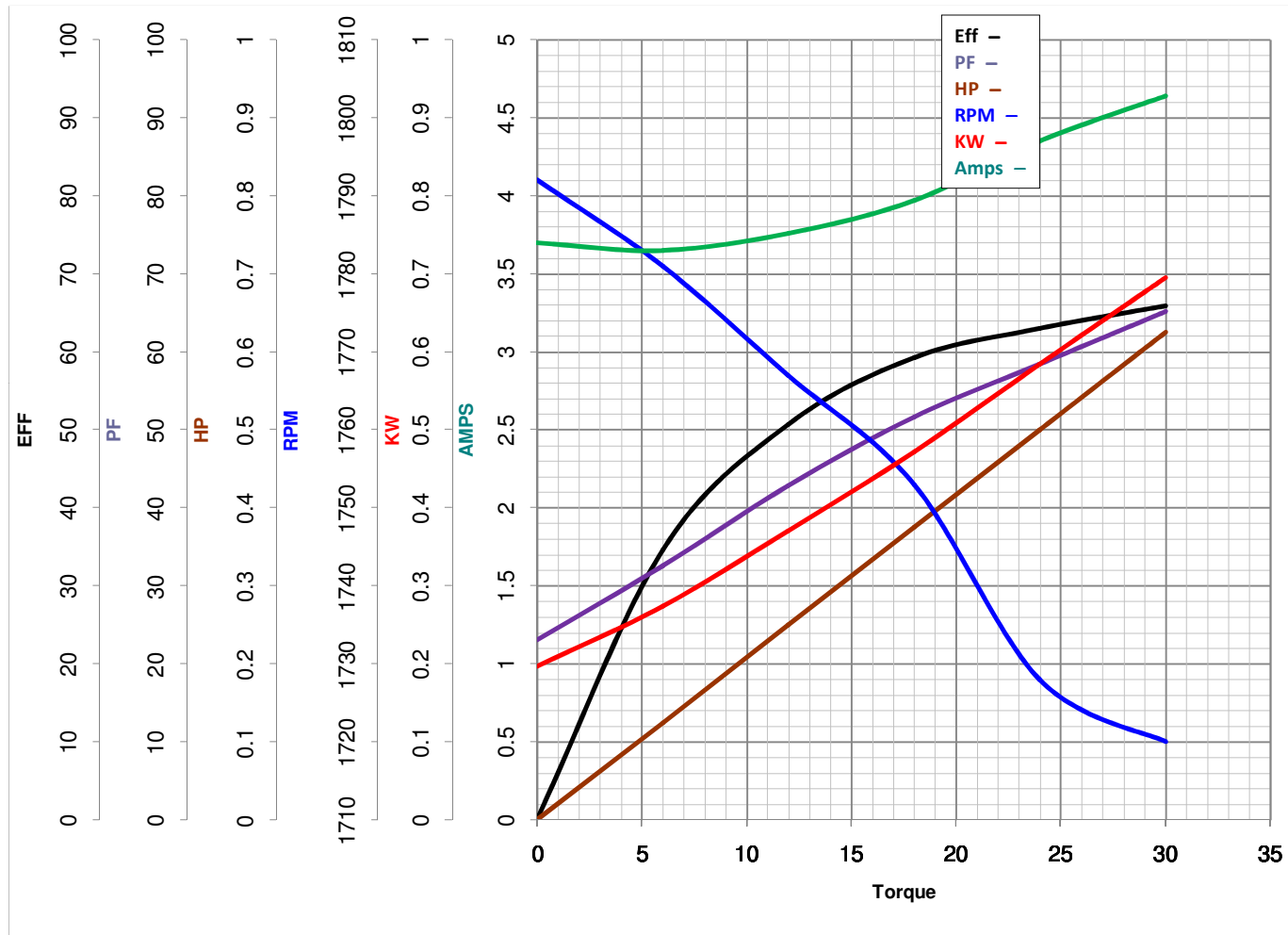
	ROTATION FACING LEAD END	L1	L2	JOIN	INSULATE SEPARATELY
HIGH VOLT	C.C.W.	P1	T4 T5	T2,T3 T8	P2
	C.W.	P1	T4 T8	T2,T3 T5	P2
LOW VOLT	C.C.W.	P1	T2,T4 T5	P2,T3 T8	---
	C.W.	P1	T2,T4 T8	P2,T3 T5	---

				TOLERANCES UNLESS SPECIFIED			ELECTRIC MOTORS GEARMOTORS AND DRIVES		DRAWN WLW 08/20/79			
				DEC	INCHES				CHK	ADN 08/27/76		
				.X	±.1				APPR	WRK 08/27/76		
				.XX	±.01	TITLE EXTERNAL WIRING DIAGRAM TYPE "C" W/PROTECTOR				SCALE	1:1	
06	REDRAWN IN SOLIDWORKS	VJB 7/22/2011		.XXX	±.005					REF		
05	REDRAWN ON CAD	DBT 05/27/97		.XXXX	±.0005	MAT'L DECAL - 004011				FMF		
NO	REVISION		BY & DATE	CHK	ANG	±1/2°	FINISH				PAGE	OF
<div>THIRD ANGLE PROJECTION</div> 				RFP		PREV			SIZE	DRAWING NO		REV
				NETWORK FILE NAME			00500303			A	005003-03	



LEESON ELECTRIC CORPORATION

TYPICAL PERFORMANCE CURVE for AC MOTOR

Model No 110492Curve at 460
60
0.5Volts
HZ
HPHP 0.50PHASE 1VOLTS 115/208-230Catalog No 110492HZ 60RPM 1725

Torque in Oz.Ft

FL TORQUE 24 Oz.Ft
 BD TORQUE 67.3 Oz.Ft
 LR TORQUE 86.4 Oz.Ft

FL AMPS 8.8/4.4
 PU TORQUE 64.5 Oz.Ft
 LR AMPS 20.28

WINDING C634257-3

Date 3/23/2018