

# PRODUCT INFORMATION PACKET



Model No: M1110003.00  
Catalog No: M1110003.00  
0.04 HP Sub-Fractional Motor, 1750 RPM, 90 V, 25 Frame, TENV  
Sub-Fractional Motors



Regal and Leeson are trademarks of Regal Beloit Corporation or one of its affiliated companies.  
©2020 Regal Beloit Corporation, All Rights Reserved. MC017097E





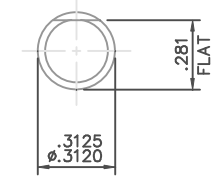
**Nameplate Specifications**

Output HP	0.04 Hp	Output KW	0.03 kW
Voltage	90 V	Current	0.70 A
Speed	1750 rpm	Service Factor	1
Efficiency	47.8 %	Duty	Continuous
Insulation Class	H	Frame	25
Enclosure	Totally Enclosed Non Ventilated	Thermal Protection	No
Ambient Temperature	40 °C	Drive End Bearing Size	608-S
Opp Drive End Bearing Size	608-S	UL	Recognized
CSA	Y	CE	Y

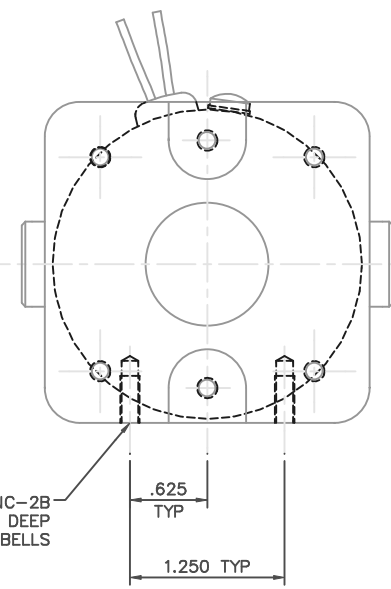
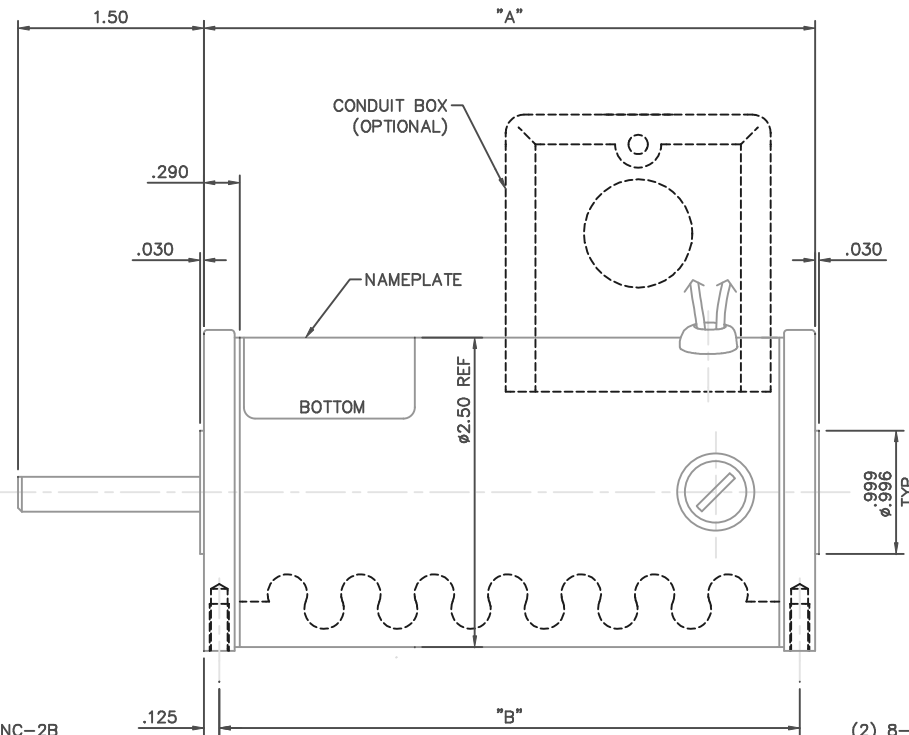
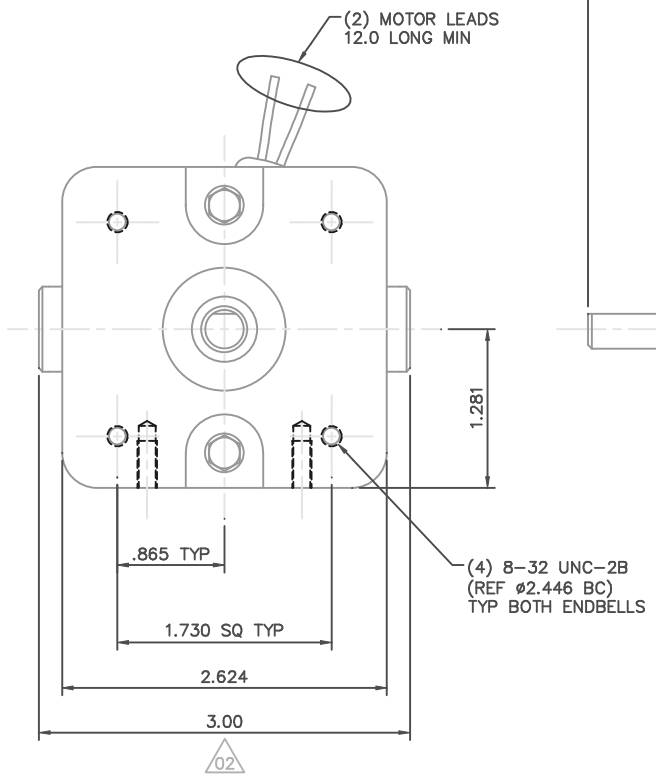
**Technical Specifications**

Rotation	Reversible	Mounting	Round
Overall Length	6.44 in	Frame Length	4.36 in
Shaft Diameter	0.312 in	Shaft Extension	1.5 in
Connection Drawing	M100526101	Outline Drawing	M1030888-M1110003

This is an uncontrolled document once printed or downloaded and is subject to change without notice. Date Created:30/12/2020



SHAFT DETAIL (2X)

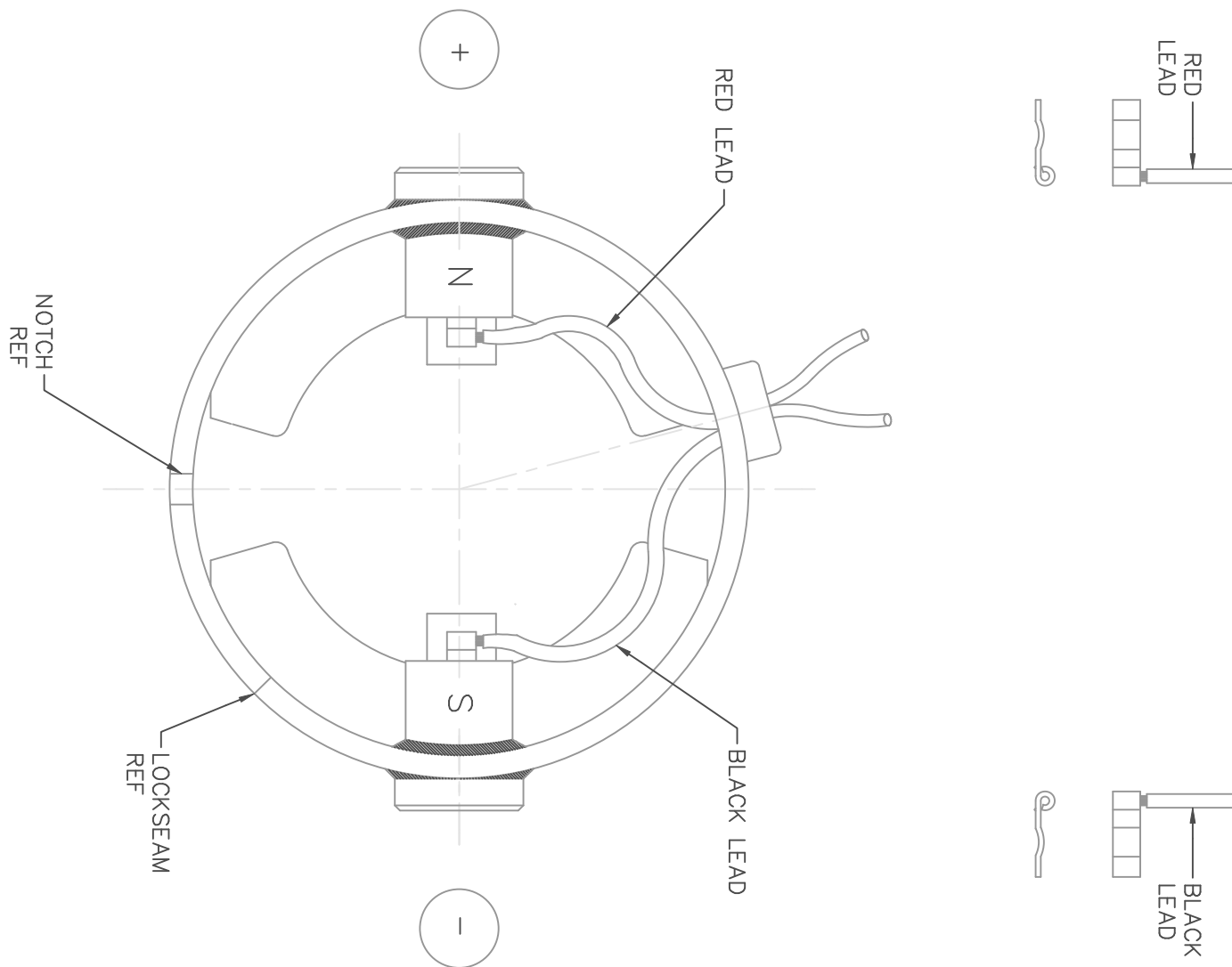


NOTES:  
1) ENDBELL MOUNTING FEET TO BE PARALLEL WITHIN .002 OF EACH OTHER.


CAT. NO.	"A"	"B"	VOLTS	H.P.	RPM
M1110003.00	4.94	4.69	90	1/25	1750
M1110006.00	4.94	4.69	12-24	1/20-1/10	1750-4200
M1110014.00	4.08	3.83	90	1/25	3500
M1110015.00	4.94	4.69	90	1/15	3500

		TOLERANCES UNLESS SPECIFIED		LEESON ELECTRIC MOTORS GEARMOTORS AND DRIVES		DRAWN SAD 7/15/03	
		DEC.	INCHES			CHK	IPG 7/16/03
		.X	±.1	TITLE		APPD	SCALE 1=1
		.XX	±.03	OUTLINE		REF	PR020584
		.XXX	±.005	25 FRAME DC		FMF	M1110014.00
		.XXX	±.0005	MAT'L		PREV	
NO.	REVISION	BY & DATE	CHK	ANG	±1/2"	FINISH	
02	ADDED 3.00 DIM TO BRUSHES, ECR 82273	IPG 1/26/2004	SAD	.XXX	±.005		
01	ADDED TABLE PER 25 FRAME CONVERSION	IPG 8/18/03	SAD	.XXX	±.0005		
THIS DRAWING IN DESIGN AND DETAIL IS OUR PROPERTY AND MUST NOT BE USED EXCEPT IN CONNECTION WITH OUR WORK ALL RIGHTS OF DESIGN AND INVENTION ARE RESERVED THIS IS AN ELECTRONICALLY GENERATED DOCUMENT - DO NOT SCALE THIS PRINT		RFP	CAD FILE	M1030888	SIZE	DRAWING NO.	REV.
		DIST	B	M1030888.00	02		

DC MOTORS



EXTERNAL CONNECTIONS FOR CW ROTATION VIEWING  
 LEAD END OF MOTOR WITH RED LEAD POSITIVE (+)  
 AND BLACK LEAD NEGATIVE (-)  
 FOR CW ROTATION REVERSE POLARITY

				TOLERANCES UNLESS SPECIFIED		 ELECTRIC MOTORS GEARMOTORS AND DRIVES	DRAWN SAD 06/20/03 CHK IPG 06/20/03 APPD		
				DEC.	INCHES		SCALE 1=1		
02	CORRECTED "N" & "S", ADDED TRU-TORQ TO THE TITLE	IPG 3/1/2004	SAD	.X	±.1	TITLE CONNECTION DIAGRAM TRU-TORQ	REF PR020584		
	BLOCK AND ORACLE DESCRIPTION, ECR 83989			.XXX	±.005		MAT'L. SEE ABOVE	FMF M110014.00	
01	CORRECTED "N" & "S", ECR 83508	SMB 01/21/04	IPG	.XXXX	±.0005	FINISH	PREV		
NO.	REVISION	BY & DATE	CHK	ANG	±1/2'				
THIS DRAWING IN DESIGN AND DETAIL IS OUR PROPERTY AND MUST NOT BE USED EXCEPT IN CONNECTION WITH OUR WORK ALL RIGHTS OF DESIGN AND INVENTION ARE RESERVED THIS IS AN ELECTRONICALLY GENERATED DOCUMENT - DO NOT SCALE THIS PRINT				RFP	CAD FILE	M100526101	SIZE A	DRAWING NO. M1005261.01	REV. 02
				DIST					

# LEESON ELECTRIC CORPORATION

## TYPICAL PERFORMANCE CURVE FOR DIRECT CURRENT PERMANENT MAGNET MOTOR

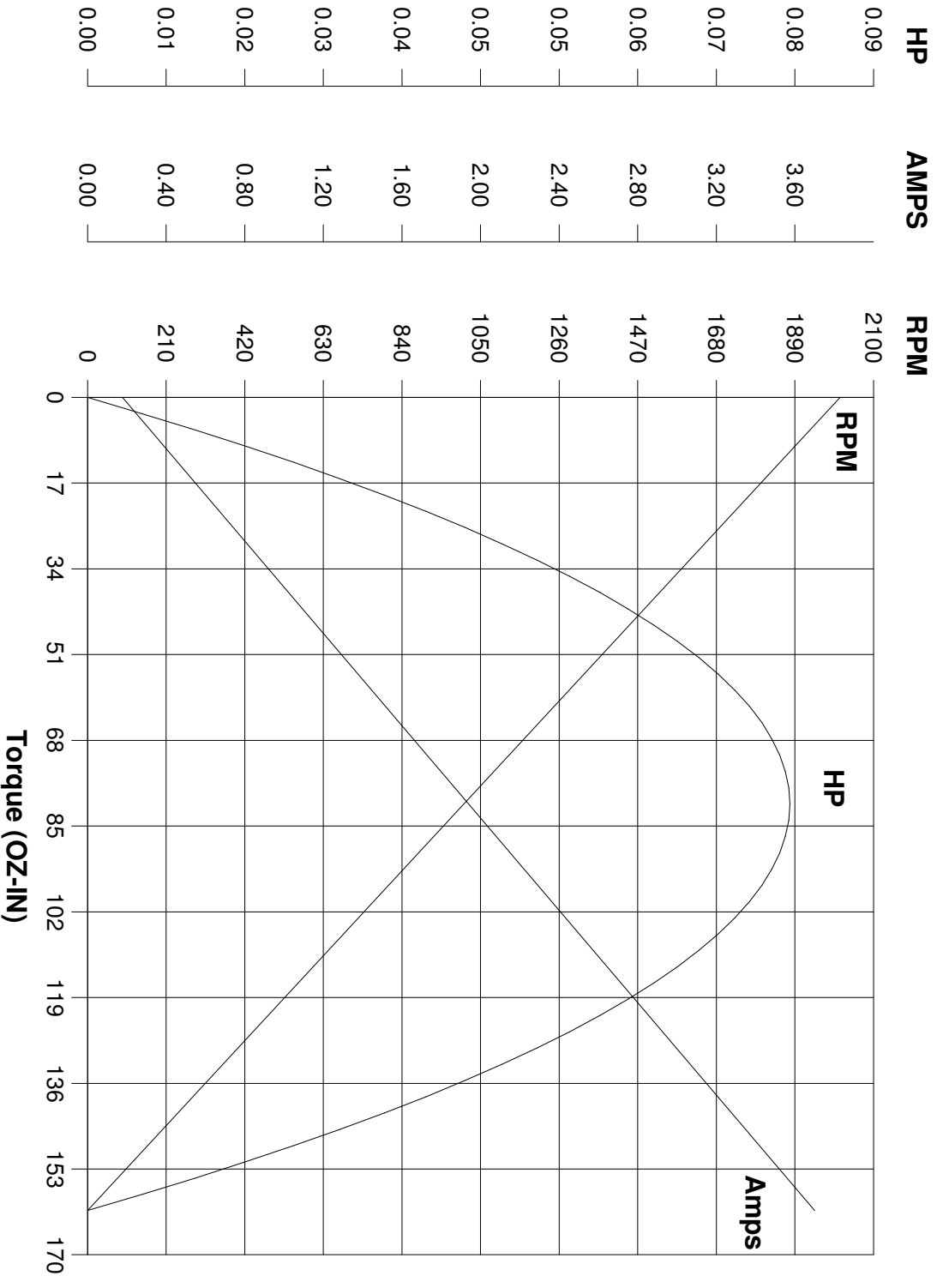
Model No. 980.535

Catalog No. M1110003.00

HP 0.040 RPM 1750 DC Volts 90.0 N.P. FLA 0.70

F.F. 1.38 Encl TENV Type DN S.F. 1.00

Max. Amb. 40.0 Deg C Insul. H Frame 25 Duty Cont



Ra 30.000 Ohms  
 La 56.20 mHenrys  
 Ja 0.0700 LB-IN<sup>1/2</sup>  
 Ke 43.44 V/KRPM

Kt 58.75 OZ-IN/AMP  
 I<sub>max</sub> 8.2 AMPS Allowed  
 FL Torque 23.00 OZ-IN  
 FL EFF 47.80 %

Winding W- MD25228-1 Prepared by V. Boehlen Date 05-05-2005