

PRODUCT INFORMATION PACKET



Model No: M1110006.00
Catalog No: M1110006.00
0.05-0.1 HP Sub-Fractional Motor, 1750-4200 RPM, 12-24 V, 25 Frame, TENV
Sub-Fractional Motors



Regal and Leeson are trademarks of Regal Beloit Corporation or one of its affiliated companies.
©2020 Regal Beloit Corporation, All Rights Reserved. MC017097E





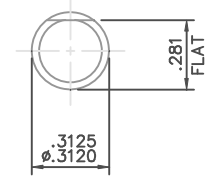
Nameplate Specifications

Output HP	0.05-0.1 Hp	Output KW	0.04-0.07 kW
Voltage	12-24 V	Current	4.4 A
Speed	1750-4200 rpm	Service Factor	1
Efficiency	68.7 %	Duty	Continuous
Insulation Class	F	Frame	25
Enclosure	Totally Enclosed Non Ventilated	Thermal Protection	No
Ambient Temperature	40 °C	Drive End Bearing Size	608-S
Opp Drive End Bearing Size	608-S	UL	Recognized
CSA	Y	CE	Y

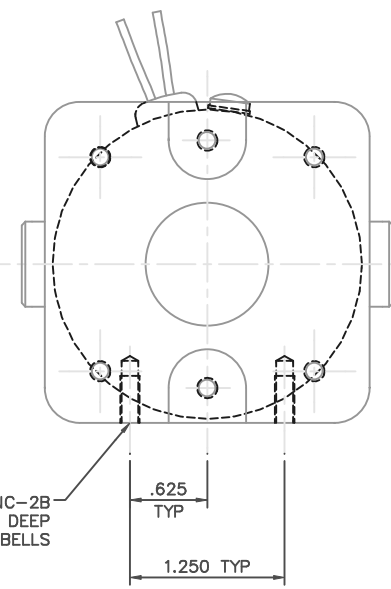
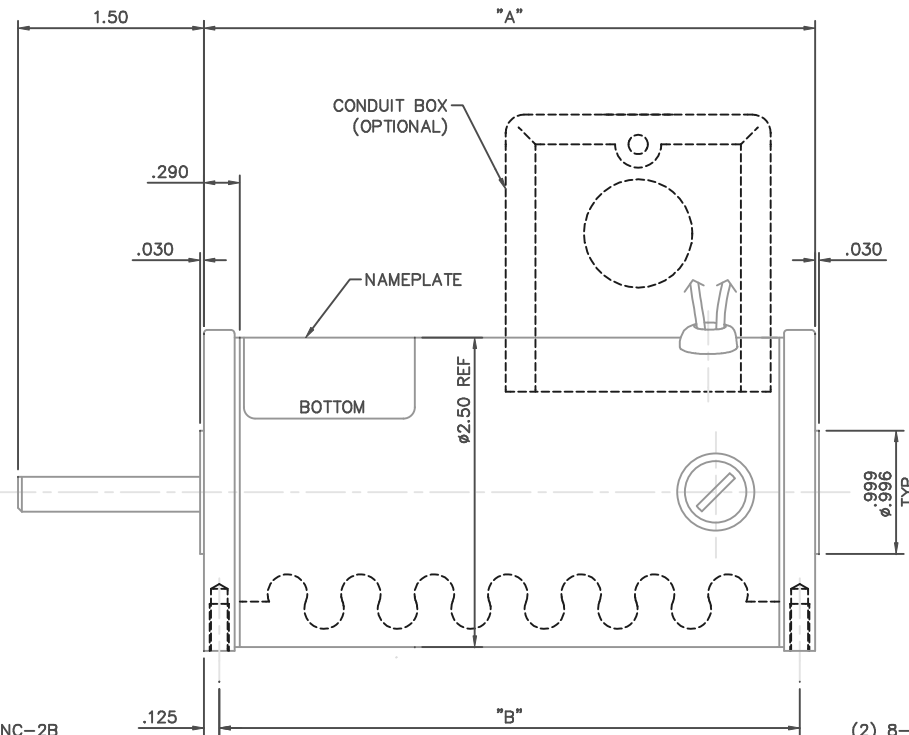
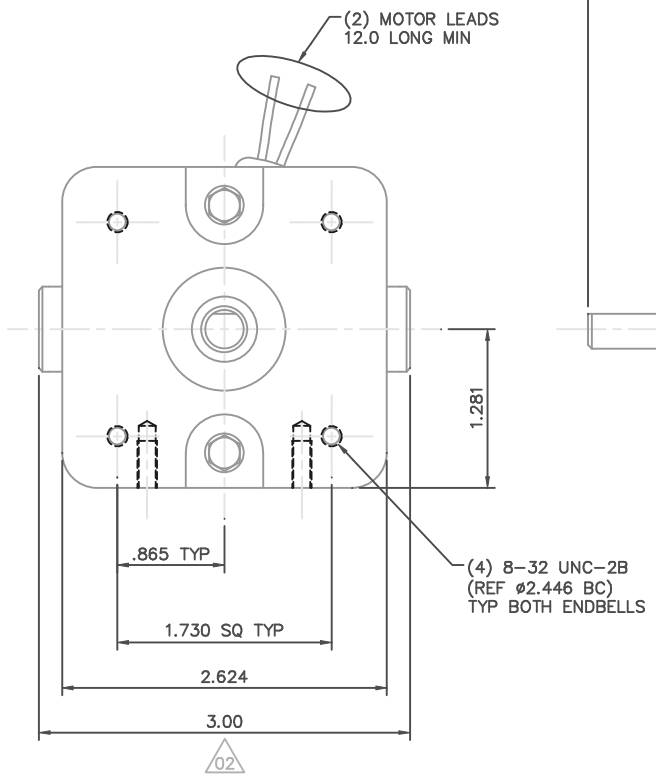
Technical Specifications

Rotation	Reversible	Mounting	Round
Overall Length	6.44 in	Frame Length	4.36 in
Shaft Diameter	0.312 in	Shaft Extension	1.5 in
Connection Drawing	M100526101	Outline Drawing	M1030888-M1110006

This is an uncontrolled document once printed or downloaded and is subject to change without notice. Date Created:30/12/2020



SHAFT DETAIL (2X)

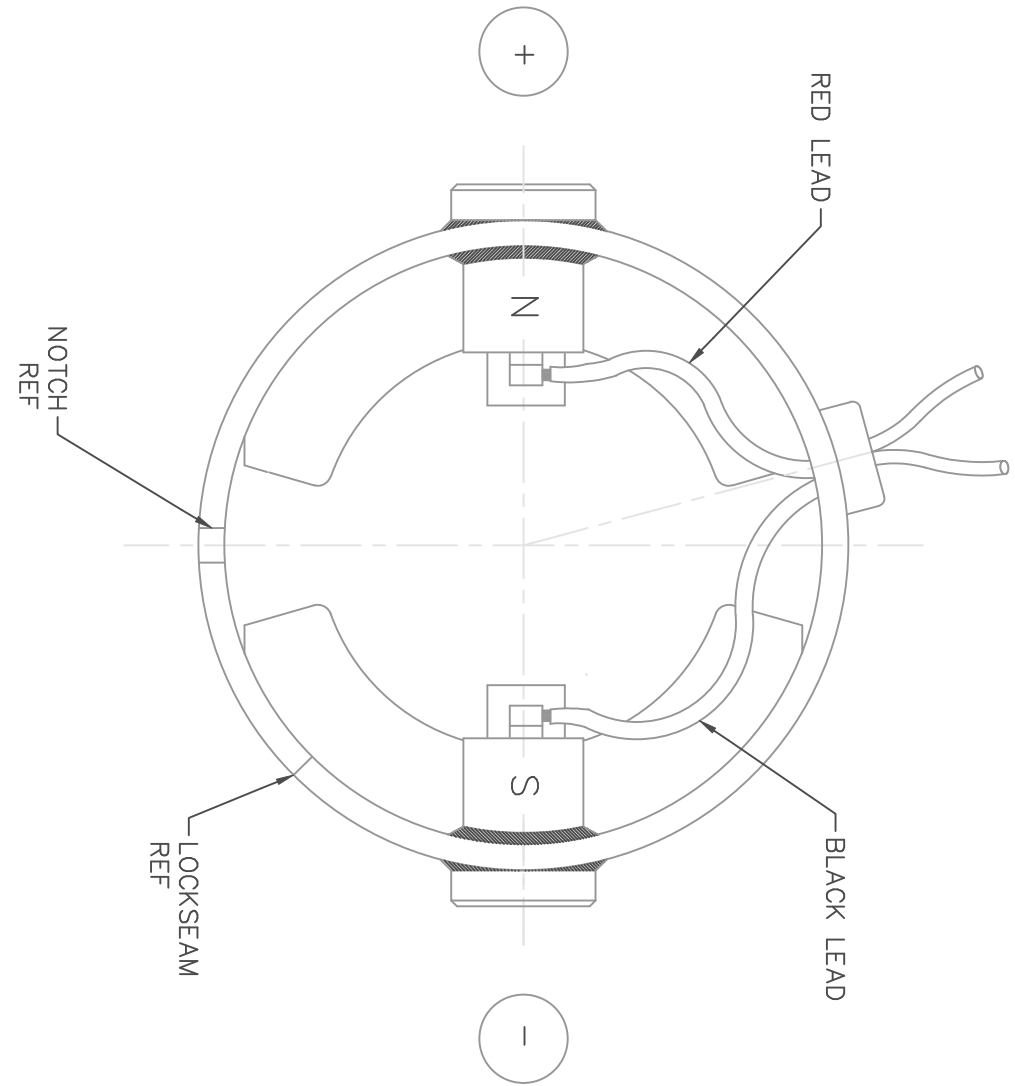


NOTES:
1) ENDBELL MOUNTING FEET TO BE PARALLEL WITHIN .002 OF EACH OTHER.


CAT. NO.	"A"	"B"	VOLTS	H.P.	RPM
M1110003.00	4.94	4.69	90	1/25	1750
M1110006.00	4.94	4.69	12-24	1/20-1/10	1750-4200
M1110014.00	4.08	3.83	90	1/25	3500
M1110015.00	4.94	4.69	90	1/15	3500

		TOLERANCES UNLESS SPECIFIED		LEESON ELECTRIC MOTORS GEARMOTORS AND DRIVES		DRAWN SAD 7/15/03	
		DEC.	INCHES			CHK	IPG 7/16/03
		.X	±.1	TITLE		APPD	SCALE 1=1
		.XX	±.03	OUTLINE		REF	PR020584
02	ADDED 3.00 DIM TO BRUSHES, ECR 82273	SAD	.XXX	±.005	25 FRAME DC		FMF M1110014.00
01	ADDED TABLE PER 25 FRAME CONVERSION	IPG	.XXXX	±.0005	MAT'L		PREV
NO.		REVISION		BY & DATE		FINISH	
THIS DRAWING IN DESIGN AND DETAIL IS OUR PROPERTY AND MUST NOT BE USED EXCEPT IN CONNECTION WITH OUR WORK ALL RIGHTS OF DESIGN AND INVENTION ARE RESERVED THIS IS AN ELECTRONICALLY GENERATED DOCUMENT - DO NOT SCALE THIS PRINT		RFP	ANG	±1/2"	CAD FILE	M1030888	SIZE B
		DIST		DRAWING NO.		REV. 02	
				M1030888.00			

DC MOTORS



EXTERNAL CONNECTIONS FOR CW ROTATION VIEWING
 LEAD END OF MOTOR WITH RED LEAD POSITIVE (+)
 AND BLACK LEAD NEGATIVE (-)
 FOR CW ROTATION REVERSE POLARITY

				TOLERANCES UNLESS SPECIFIED		 ELECTRIC MOTORS GEARMOTORS AND DRIVES	DRAWN SAD 06/20/03		
				DEC.	INCHES		CHK IPG 06/20/03	APPD	
				.X	±.1	TITLE CONNECTION DIAGRAM TRU-TORQ	SCALE 1=1		
02	CORRECTED "N" & "S", ADDED TRU-TORQ TO THE TITLE BLOCK AND ORACLE DESCRIPTION, ECR 83989	IPG 3/1/2004	SAD	.XX	±.01			REF PR020584	
01	CORRECTED "N" & "S", ECR 83508	SMB 01/21/04	IPG	.XXX	±.005	MAT'L. SEE ABOVE	FMF M110014.00		
NO.	REVISION	BY & DATE	CHK	ANG	±1/2'	FINISH	PREV		
THIS DRAWING IN DESIGN AND DETAIL IS OUR PROPERTY AND MUST NOT BE USED EXCEPT IN CONNECTION WITH OUR WORK ALL RIGHTS OF DESIGN AND INVENTION ARE RESERVED THIS IS AN ELECTRONICALLY GENERATED DOCUMENT - DO NOT SCALE THIS PRINT				RFP		CAD FILE M100526101	SIZE A	DRAWING NO. M1005261.01	REV. 02
				DIST					

LEESON ELECTRIC CORPORATION

TYPICAL PERFORMANCE CURVE FOR DIRECT CURRENT PERMANENT MAGNET MOTOR

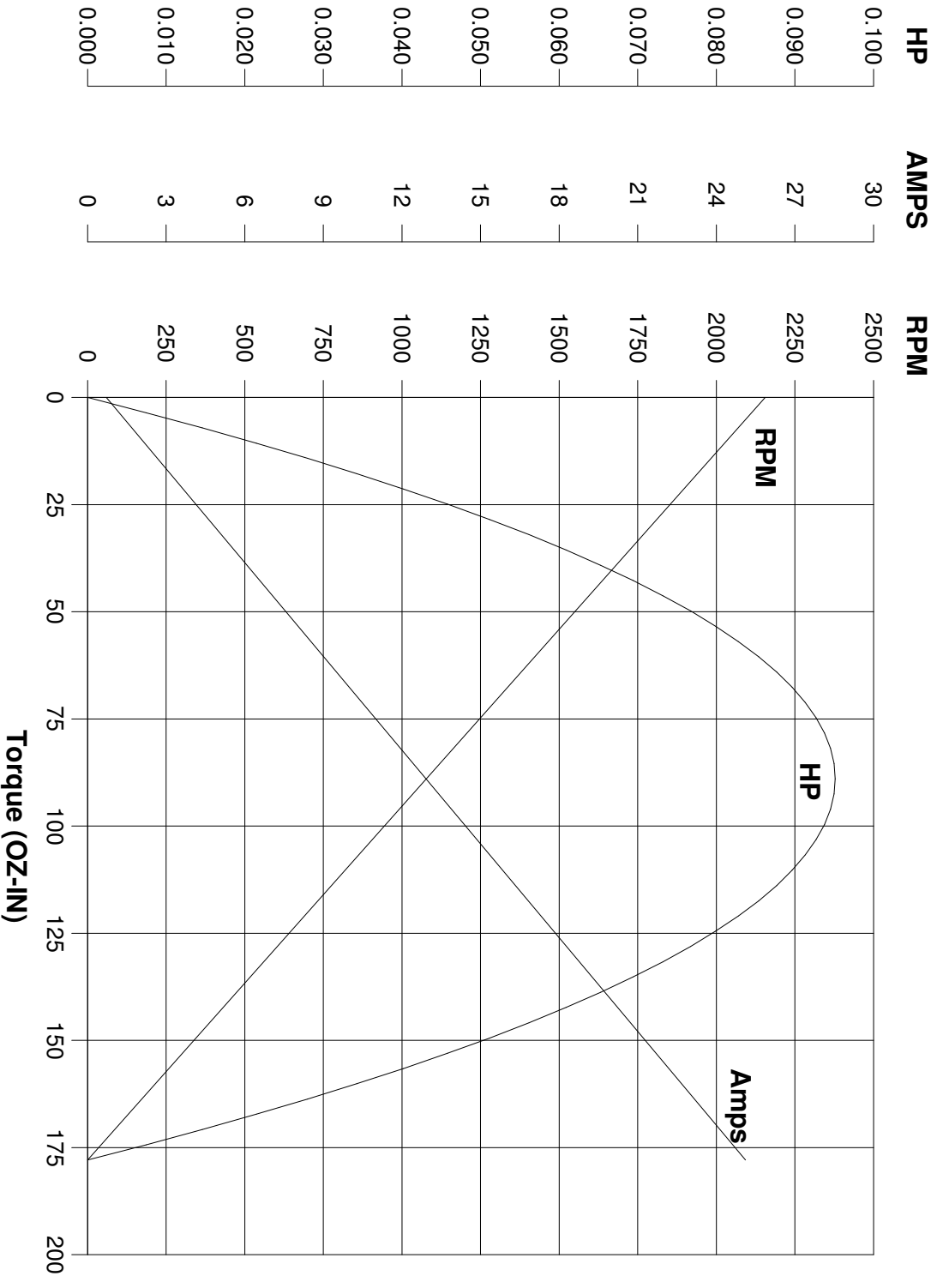
Model No. 980.536

Catalog No. M1110006.00

HP 0.050 RPM 1750 DC Volts 12.0 N.P. FLA 4.40

F.F. 1.00 Encl TENV Type DN S.F. 1.00

Max. Amb. 40.0 Deg C Insul. F Frame 25 Duty Cont



Ra 0.4480 Ohms
 La 0.8400 mHenrys
 Ja 2.200 LB-IN^{1/2}
 Ke 5.389 V/KRPM

Kt 7.288 OZ-IN/AMP
 I_{max} 65.6 AMPS Allowed
 FL Torque 28.80 OZ-IN
 FL EFF 68.70 %

Winding W- MD25237-1 Prepared by V. Boehlen Date 05-27-2005