

# PRODUCT INFORMATION PACKET



Model No: C6C17NK19D

Catalog No: 114165.00

1/3HP..1725RPM.56.TENV./V.1PH.60HZ.CONT.NOT.40C.1.15SF.RIGID C.BRAKEMOTOR.C6C17NK19D  
Brake



Regal and Leeson are trademarks of Regal Beloit Corporation or one of its affiliated companies.

©2018 Regal Beloit Corporation, All Rights Reserved. MC017097E



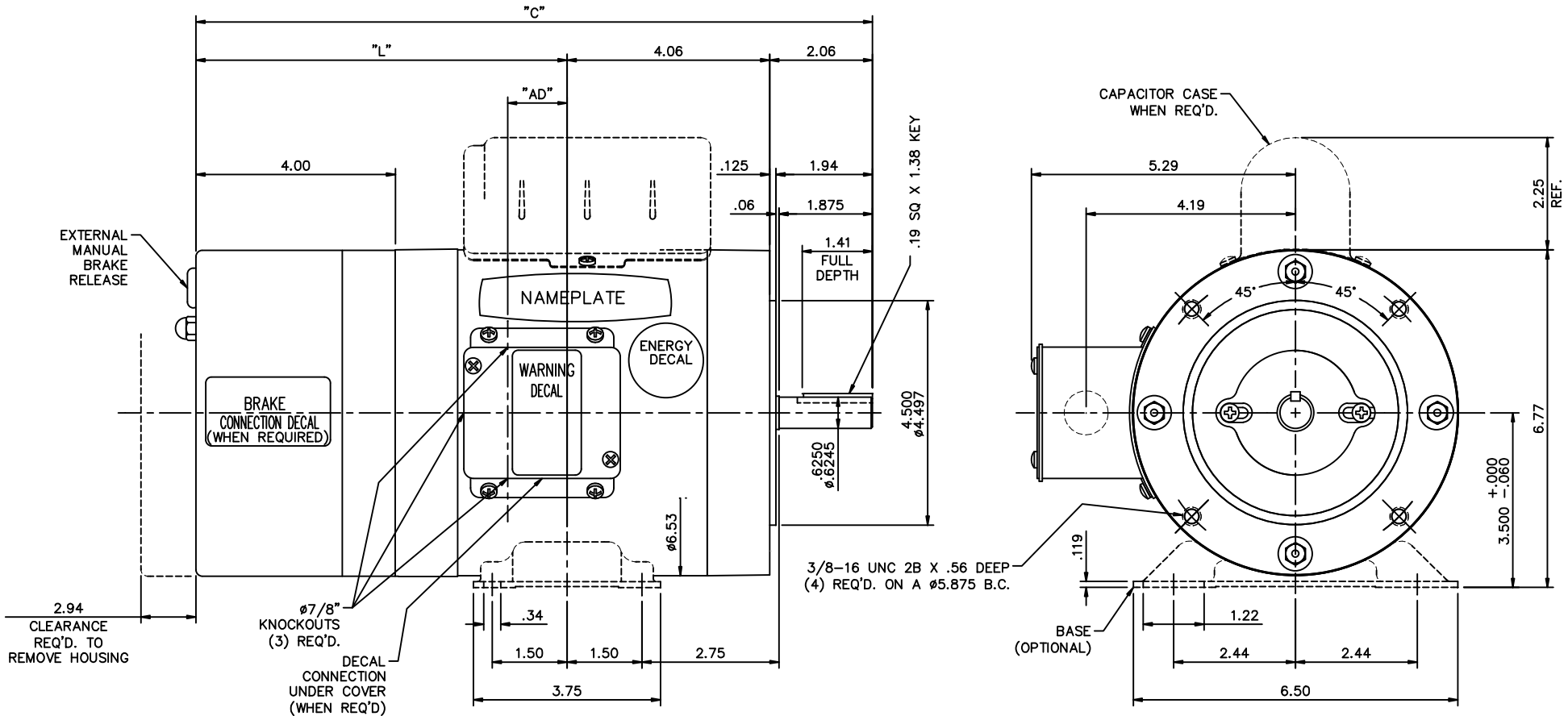


### Nameplate Specifications

Output HP	<b>0.33 Hp</b>	Output KW	<b>0.25 kW</b>
Frequency	<b>60 Hz</b>	Voltage	<b>115/208-230 V</b>
Current	<b>5.8/2.9-2.9 A</b>	Speed	<b>1725 rpm</b>
Service Factor	<b>1.15</b>	Phase	<b>1</b>
Efficiency	<b>70 %</b>	Duty	<b>Continuous</b>
Insulation Class	<b>B</b>	Design Code	<b>L</b>
KVA Code	<b>N</b>	Frame	<b>56C</b>
Enclosure	<b>Totally Enclosed Non Ventilated</b>	Overload Protector	<b>No</b>
Ambient Temperature	<b>40 °C</b>	Drive End Bearing Size	<b>6203</b>
Opp Drive End Bearing Size	<b>6203</b>	UL	<b>Recognized</b>
CSA	<b>Y</b>	CE	<b>N</b>
IP Code	<b>43</b>		

### Technical Specifications

Electrical Type	<b>Capacitor Start Induction Run</b>	Starting Method	<b>Across The Line</b>
Poles	<b>4</b>	Rotation	<b>Selective Counterclockwise</b>
Mounting	<b>Rigid base</b>	Motor Orientation	<b>HORIZONTAL</b>
Drive End Bearing	<b>BALL</b>	Opp Drive End Bearing	<b>BALL</b>
Frame Material	<b>Rolled Steel</b>	Shaft Type	<b>NEMA 56</b>
Overall Length	<b>14.06 in</b>	Frame Length	<b>5.50 in</b>
Shaft Diameter	<b>0.625 in</b>	Shaft Extension	<b>1.88 in</b>
Assembly/Box Mounting	<b>F1 ONLY</b>		
Outline Drawing	<b>033182-550</b>	Connection Diagram	<b>005005.01</b>



GASKETS THROUGHOUT

MAXIMUM FACE RUNOUT TO BE .004 T.I.R.  
 MAXIMUM PILOT ECCENTRICITY TO BE .004 T.I.R.  
 PERMISSIBLE SHAFT RUNOUT TO BE .002 T.I.R.

FRAME	"C"	"L"	"AD"
C56	13.56	7.44	1.19
D56	14.06	7.94	1.69
E56	14.56	8.44	2.19
F56	15.06	8.94	2.69
G56	15.56	9.44	3.19
J56	16.56	10.44	4.19

NO.	REVISION	BY & DATE	CHK	ANG	FINISH	MAT'L	PREV
10	DIM. 3.75 WAS 4.00, ISAAC 10-1808	DWH 6/2/2010					
09	ADDED T-BOLT NUTS ON C-FACE PER ISAAC 10-0376	GWS 1/28/10					
08	PLACED BRAKE CONN. DECAL ON BRAKE PER IS08-1648	GWS 4/24/08	.X	±.1			
07	ADDED "WHEN REQ'D" TO CONNETION DECAL NOTE	BJB 09/06/02	.XX	±.03			
06	REV'D TO SHOW ENERGY DECAL PER ECR 79348	BPW 10/22/01	.XXX	±.005			
05	REMOVED ENERGY SAVING DECAL FROM OUTLINE	BPW 10/03/01	.XXXX	±.0005			
TOLERANCES UNLESS SPECIFIED DEC. INCHES						<b>LEESON</b> ELECTRIC MOTORS GEARMOTORS AND DRIVES	
TITLE OUTLINE - 56 FRAME T.E.N.V. - "C" FACE WITH BRAKE						DRAWN RT 9/11/85 CHK APPD JCW 10/11/85	
REVISION BY & DATE						SCALE 1=2 REF 032560	
THIS DRAWING IN DESIGN AND DETAIL IS OUR PROPERTY AND MUST NOT BE USED EXCEPT IN CONNECTION WITH OUR WORK ALL RIGHTS OF DESIGN AND INVENTION ARE RESERVED THIS IS AN ELECTRONICALLY GENERATED DOCUMENT - DO NOT SCALE THIS PRINT						FMF 6T17NKI	
RFP DIST						CAD FILE 033182 SIZE B DRAWING NO. 033182	
						REV. 10	

VIEW FROM OUTSIDE OF MOTOR AT SWITCH END.




LINE LEADS



RBC PROPRIETARY AND CONFIDENTIAL INFORMATION  
 This document is the property of REGAL BELOIT CORPORATION ("RBC") including its subsidiaries and divisions and contains proprietary information of RBC. This document is loaned on the express condition that neither it nor the information contained therein shall be disclosed to others without the express written consent of RBC, and that the information shall be used by the recipient only as approved expressly by RBC. This document shall be returned to RBC upon its request. This document may be subject to certain restrictions under U.S. export control laws and regulations.

	ROTATION FACING LEAD END	L1	L2	JOIN
HIGH VOLT	C.C.W.	T1	T4, T5	T2, T3, T8
	C.W.	T1	T4, T8	T2, T3, T5
LOW VOLT	C.C.W.	T1, T3, T8	T2, T4, T5	-----
	C.W.	T1, T3, T5	T2, T4, T8	-----

--	REDRAWN IN SOLIDWORKS	VJB 02/16/11	TOLERANCES UNLESS SPECIFIED		 ELECTRIC MOTORS GEARMOTORS AND DRIVES	DRAWN ADH 08/06/73
27	UPDATED TO CURRENT STANDARDS	DBT 05/27/97	DEC	INCHES		CHK
26	ADDED PAGE 32 (114787) & PAGE 33 (114788)	KAZ 12/20/95	PG	.X ±.1		APPR JCW 03/09/79
25	ADDED PAGE 31	KAZ 04/19/95	DL	.XX ±.01	TITLE EXTERNAL WIRING DIAGRAM	SCALE 1:1
24	ADDED PAGES 29 & 30	KMM 03/30/95	DL	.XXX ±.005	TYPE "C" W/O PROTECTOR	REF FIG 2-23 C4A
23	ADDED PAGE 28	KMM 01/27/95		.XXXX ±.0005	MAT'L DECAL - 004012	FMF MGI-2.4B
NO	REVISION	BY & DATE	CHK	ANG ±1/2°	FINISH	PAGE OF
THIRD ANGLE PROJECTION			RFP	PREV	SIZE	DRAWING NO
			NETWORK FILE NAME 00500501		A	005005-01
						REV
						--



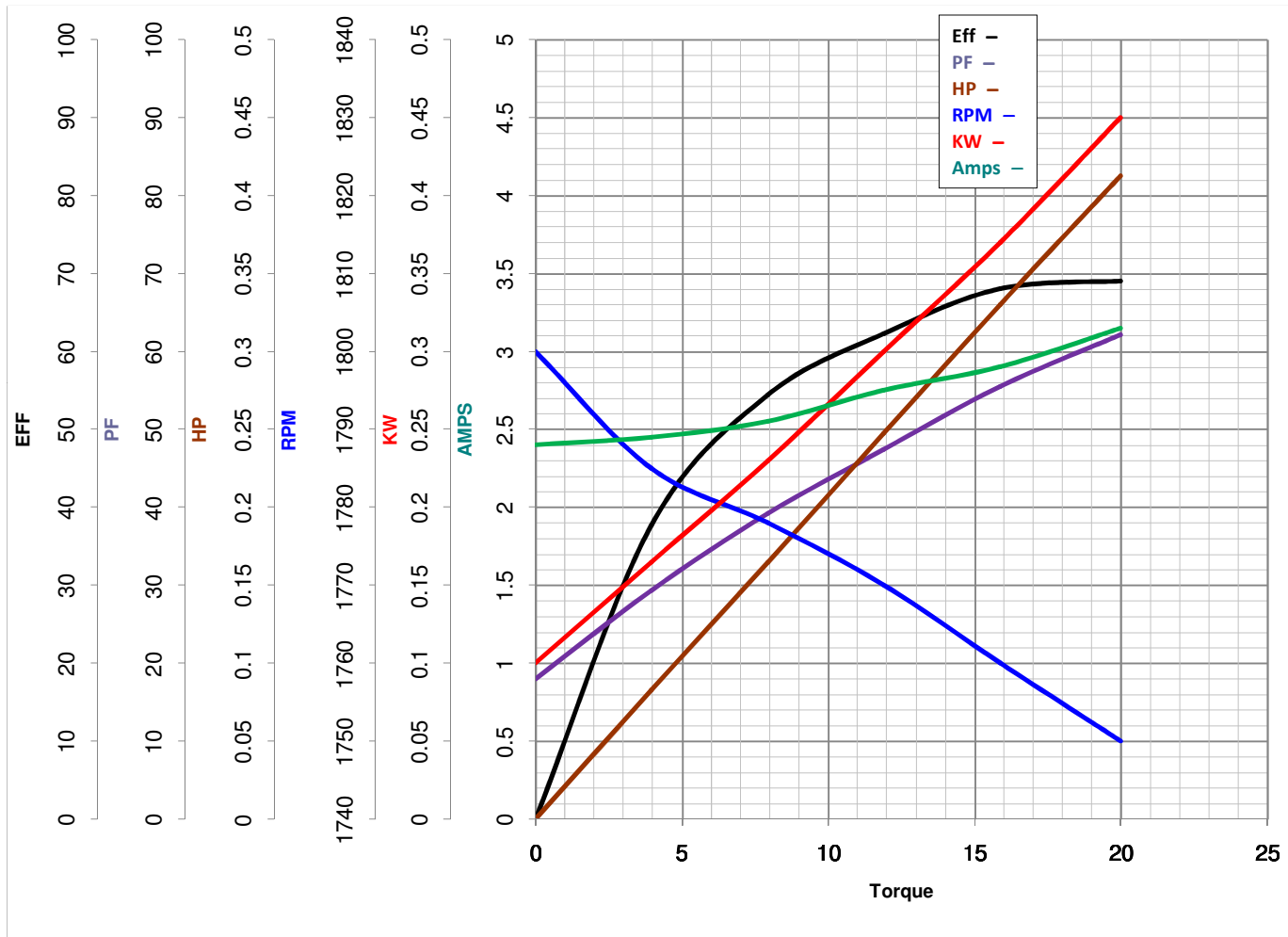
**LEESON ELECTRIC CORPORATION**  
 TYPICAL PERFORMANCE CURVE for AC MOTOR

Model No 114165.00

Curve at 230 Volts      HP 0.34      PHASE 1  
60 HZ  
0.33 HP      VOLTS 115/208-230

Catalog No 114165.00

HZ 60      RPM 1725



FL TORQUE 15.88 Oz.Ft  
 BD TORQUE 61.5 Oz.Ft  
 LR TORQUE 56.3 Oz.Ft

FL AMPS 5.8/2.9-2.9  
 PU TORQUE 51.9 Oz.Ft  
 LR AMPS 16.9

WINDING C634261-3

Date 3/27/2018