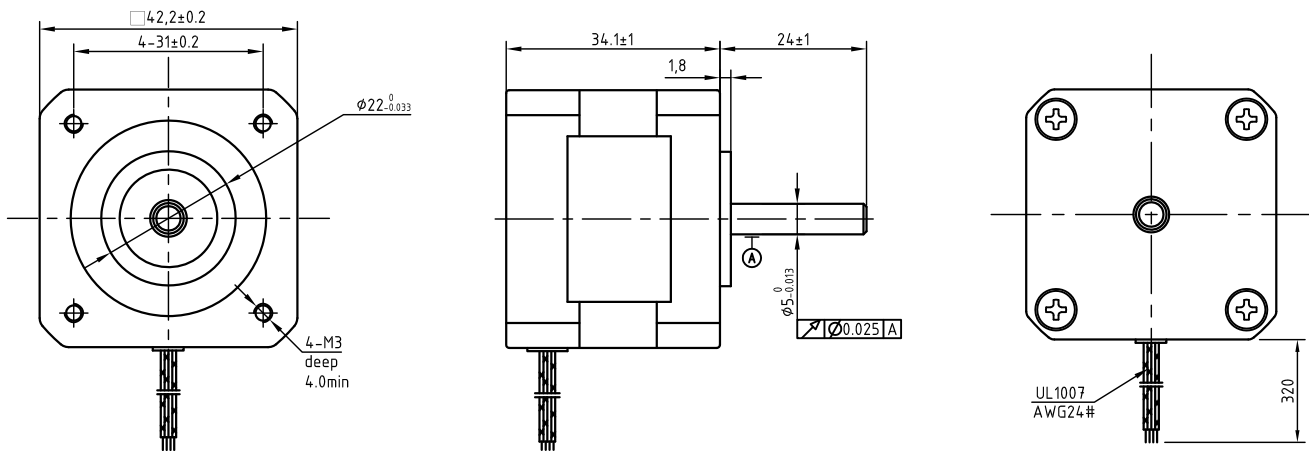
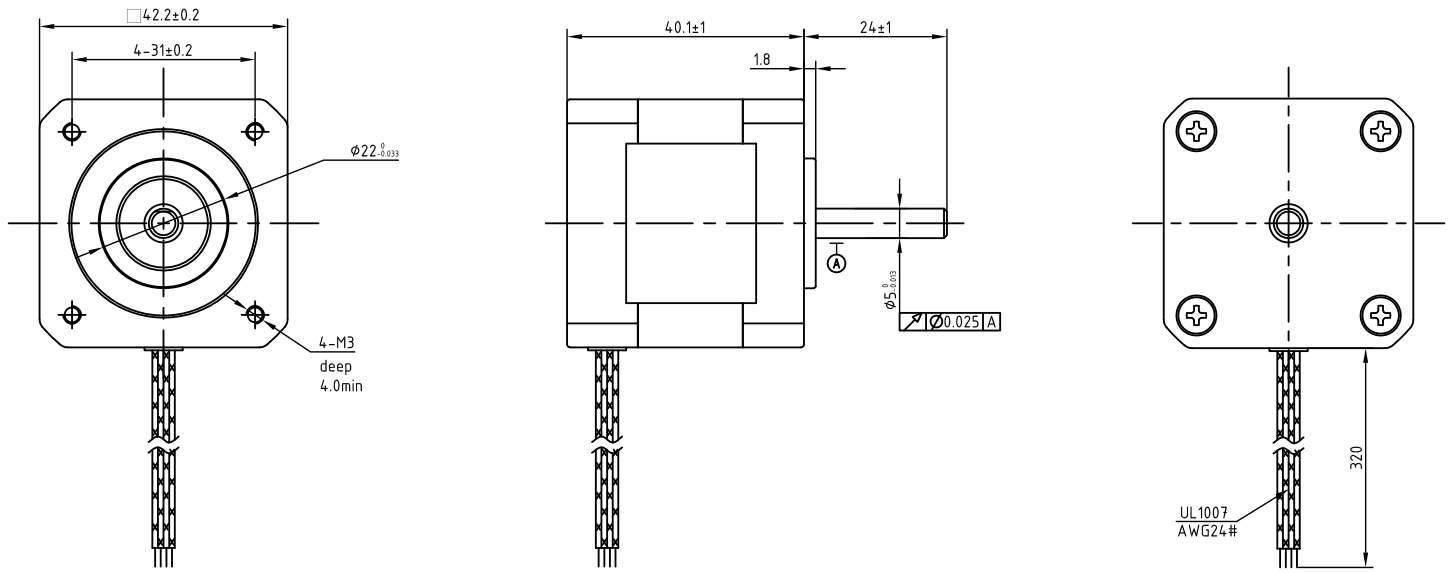


	Single Stack Model	Encoder Model	Double Stack Model	Triple Stack Model
Specifications	PJE42T-34D14	PJE42T-48A14-E1000	PJE42T-40D14	PJE42T-48D14
Number of Phases	2			
Basic Step Angle	1.8°			
Positional Accuracy (no load)	±0.09° Max			
Rated Current/Phase	1.2A	2.0	1.2A	
Resistance/Phase @ 20°C	2.1Ω ± 10%	1.35Ω ± 10%	2.5Ω ± 10%	3.1Ω ± 10%
Inductance/Phase @ 1KHz, 1V	3.7mH ± 20%	3.2mH ± 20%	6.5mH ± 20%	7.7mH ± 20%
Holding Torque	0.3N · m	0.48N · m	0.4N · m	0.53N · m
Rotor Inertia	~54g · cm ²	~77g · cm ²	~54g · cm ²	~77g · cm ²
Mass	~0.3Kg	~0.36Kg	~0.3Kg	~0.36Kg
Radial Play (Max)	0.025mm (Load/450g)			
Axial Play (Max)	0.075mm (Load/920g)	0.005mm (Load/920g)	0.075mm (Load/920g)	
Duty	Continuous			
Dielectric Strength	500V A.C.			
Insulation Resistance	100MΩ/Min			
Insulation Class (UL)	B			
Temperature Rise	80K/Max			
Life (Hours)	5000/Min			
Operation Ambient Temperature	0°C ~ +50°C			
Operation Ambient Humidity	20% RH ~ 90% RH			
Storage Ambient Temperature	-20°C ~ +70°C			
Storage Ambient Humidity	15% RH ~ 95% RH			

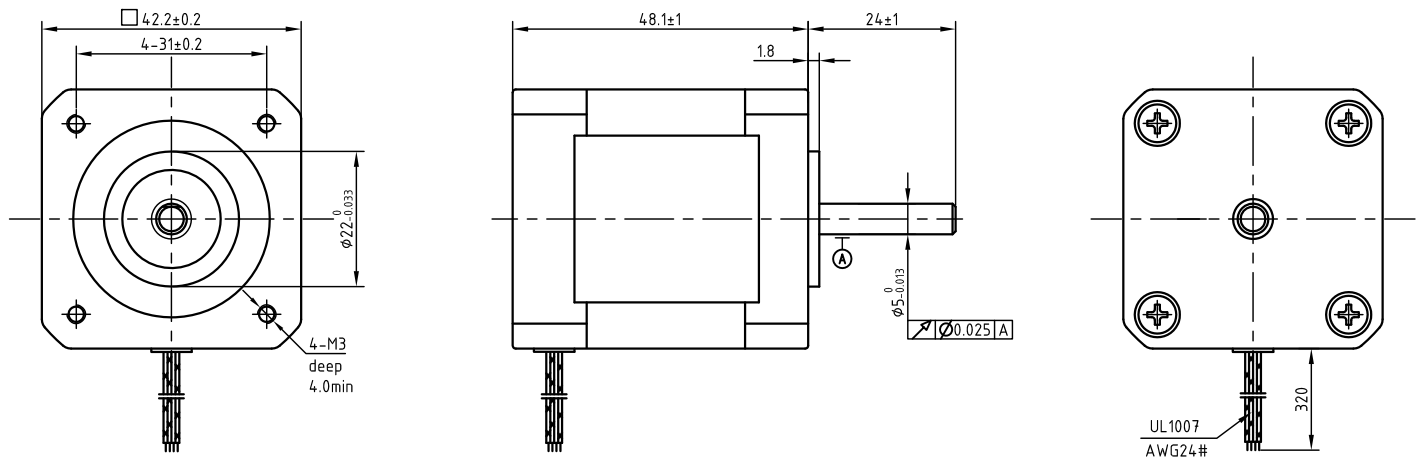
Single Stack Dimensions (mm)



Double Stack Dimensions (mm)



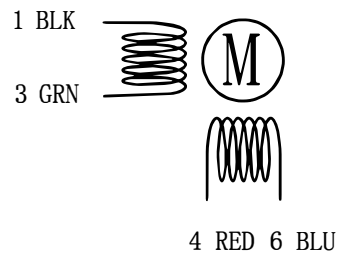
Triple Stack Dimensions (mm)



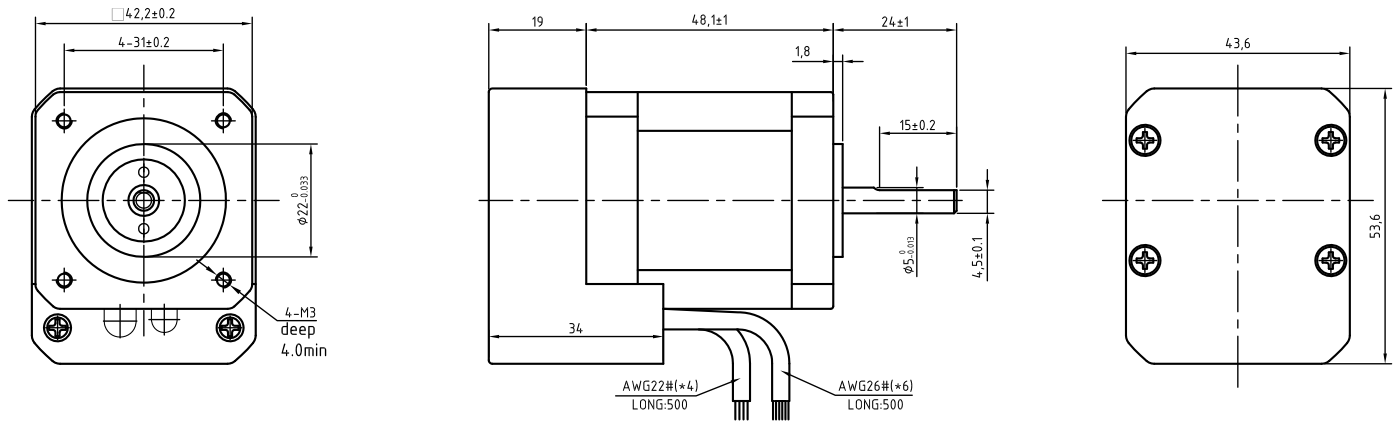
Phase Sequence (2 Phase Exciting)

	Step	A	B	\bar{A}	\bar{B}	
CW ↑	1	+	+	-	-	CCW ↑
	2	-	+	+	-	
	3	-	-	+	+	
	4	+	-	-	+	
	1	+	+	-	-	

Wiring Diagram



Encoder Model Dimensions (mm)



Encoder Control (1000CPR)

Black	GND
Red	+5VCC
Blue/White	EA-
Blue	EA+
Orange/White	EB-
Orange	EB+

Connector Option for Encoder Model (to connect to TITAN-SVX-ETH) – PJE42T-48A14-E1000-SVX

