

PRODUCT INFORMATION PACKET

Model No: 184THTY7726
Catalog No: Y543A
5,1800,TENV,184TC,3/60/230/460
1000:1 Speed Ratio



Regal and Marathon are trademarks of Regal Beloit Corporation or one of its affiliated companies.
©2019 Regal Beloit Corporation, All Rights Reserved. MC017097E



Nameplate Specifications

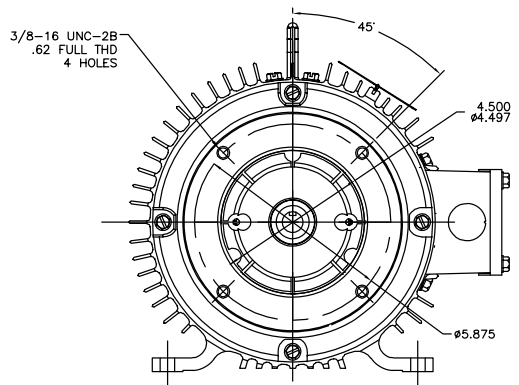
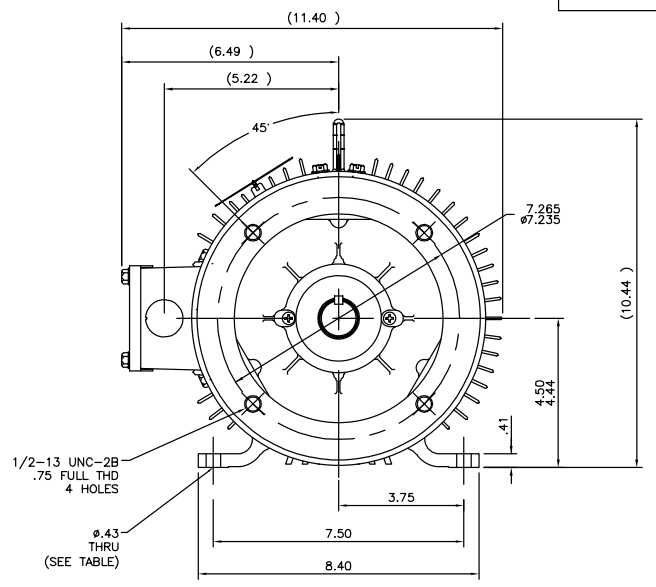
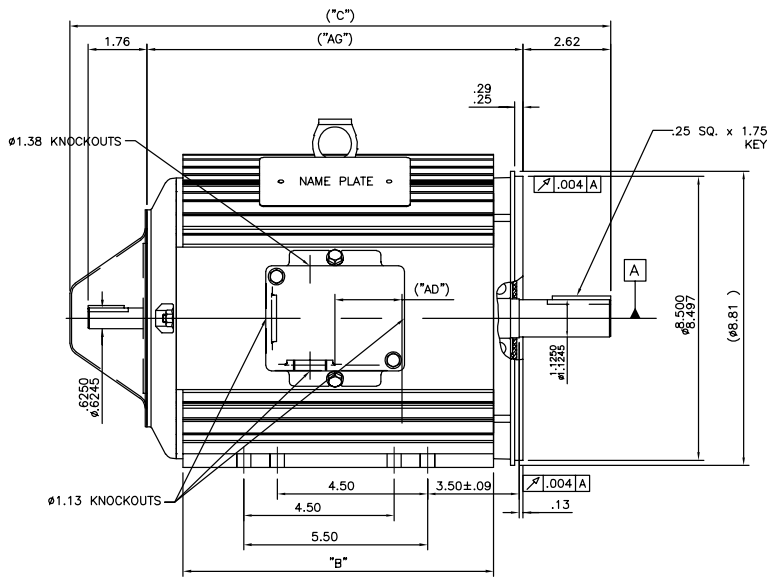
Output HP	5 HP	Output KW	3.7 kW
Frequency	60 Hz	Voltage	230/460 V
Current	13.4/6.7 A	Speed	1760 RPM
Service Factor	1	Phase	3
Efficiency	89.5 %	Duty	Continuous
Insulation Class	F	Design Code	INV
KVA Code	L	Frame	184TC
Enclosure	Totally Enclosed Non Ventilated	Overload Protector	No
Ambient Temperature	40 °C	Drive End Bearing Size	6207
Opp Drive End Bearing Size	6206	UL	Recognized
CSA	Y	CE	Y
IP Code	43		

Technical Specifications

Electrical Type	Squirrel Cage Inverter Duty	Starting Method	Inverter Only
Poles	4	Rotation	Reversible
Mounting	Rigid Base	Motor Orientation	Horizontal
Drive End Bearing	Ball	Opp Drive End Bearing	Ball
Frame Material	Aluminum	Shaft Type	T
Overall Length	17.69 in	Frame Length	11.00 in
Shaft Diameter	1.125 in	Shaft Extension	2.62 in
Assembly/Box Mounting	F1/F2 Capable		
Outline Drawing	036109ME-1100	Connection Diagram	005010.20ME

This is an uncontrolled document once printed or downloaded and is subject to change without notice. Date Created: 08/27/2019

036109ME

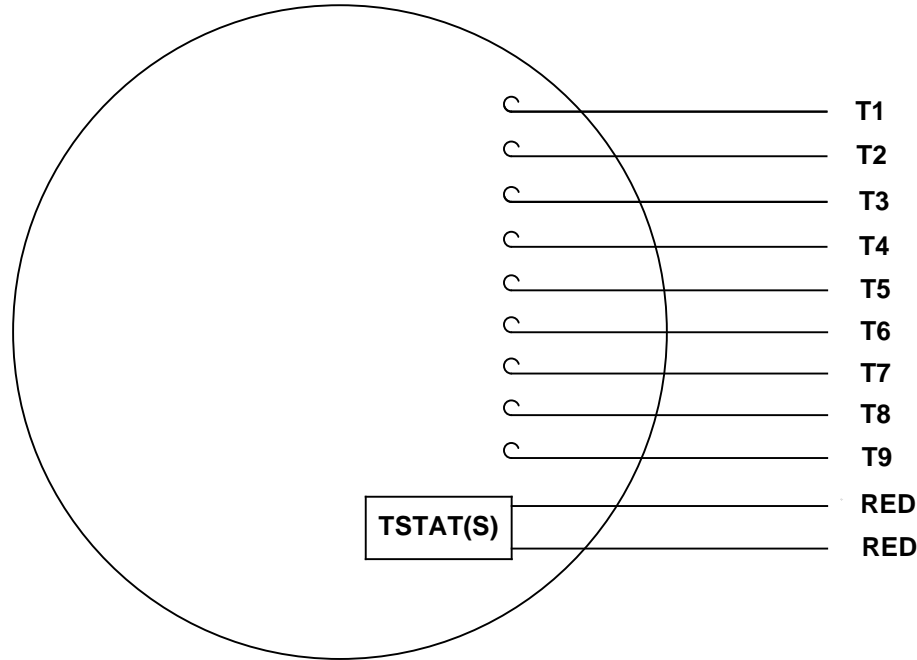


LEAD END BRACKET DETAIL
(COVER REMOVED)

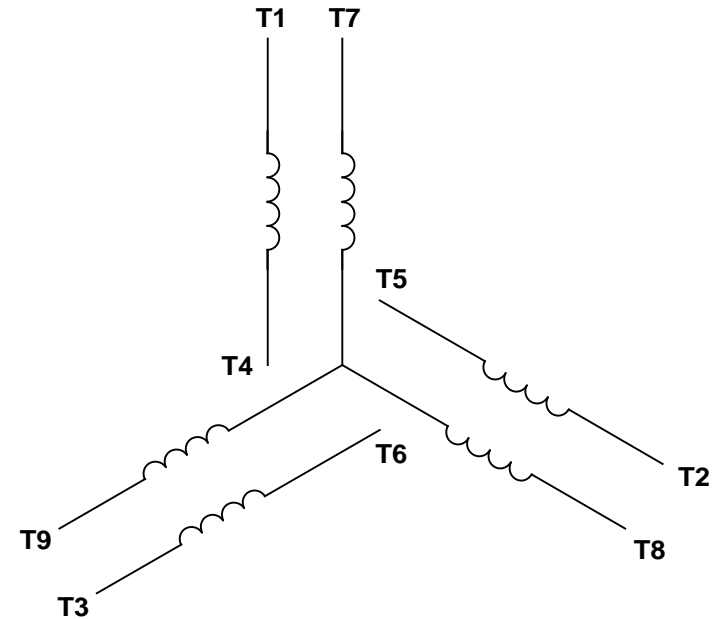
1100	17.69	2.75	10.8	12.76	8
DASH NO	"C"	"AD"	"B"	"AG"	FOOT HOLES

		TOLERANCES UNLESS SPECIFIED		MARATHON ELECTRIC		DRAWN PVR 02/03/15	
DEC.	INCHES	DEC.	INCHES	CHK	ST	APPD	SCALE
X	±.1	.XX	±.03				3=8
02	HOLE LOCATION UPDATED	SAJ	04/08/15	ST	.XXX	±.005	REF 035977ME
01	REMOVED DASH #950 FROM TABLE	PVR	02/06/15	ST	.XXX	±.0005	FMF
NO.	REVISION	BY & DATE	CHK	ANG	±1/2'	FINISH	PREV
THIS DRAWING IN DESIGN AND DETAIL IS OUR PROPERTY AND MUST NOT BE USED EXCEPT IN CONNECTION WITH OUR WORK ALL RIGHTS OF DESIGN AND INVENTION ARE RESERVED THIS IS AN ELECTRONICALLY GENERATED DOCUMENT - DO NOT SCALE THIS PRINT				RFP	CAD FILE	036109ME	SIZE B
				DIST	DRAWING NO.	036109ME	REV. 02

VIEW FROM OUTSIDE OF MOTOR AT SWITCH END.



LINE LEADS

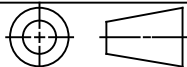


RBC PROPRIETARY AND CONFIDENTIAL INFORMATION
 This document is the property of REGAL BELOIT CORPORATION ("RBC") including its subsidiaries and divisions and contains proprietary information of RBC. This document is loaned on the express condition that neither it nor the information contained therein shall be disclosed to others without the express written consent of RBC, and that the information shall be used by the recipient only as approved expressly by RBC. This document shall be returned to RBC upon its request. This document may be subject to certain restrictions under U.S. export control laws and regulations.

VOLTAGE	L1	L2	L3	JOIN & INSULATE
HIGH	T1	T2	T3	(T4, T7) (T5, T8) (T6, T9)
LOW	T1, T7	T2, T8	T3, T9	T4, T5, T6

		TOLERANCES UNLESS SPECIFIED				DRAWN RDW 04/13/04	
		DEC	INCHES			CHK	
		.X	±.1			APPR	
		.XX	±.01			SCALE 1:1	
			.XXX	±.005	TITLE EXTERNAL WIRING DIAGRAM		REF
			.XXX	±.0005	MAT'L DECAL - 004014 (TSTAT) - 080582		FMF 129027
--	REDRAWN IN SOLIDWORKS	VJB 02/08/11	CHK	ANG ±1/2°	FINISH		PAGE OF
NO	REVISION	BY & DATE	RFP	PREV	SIZE	DRAWING NO	REV
			NETWORK FILE NAME 00501020ME		A	005010-20ME	--

THIRD ANGLE PROJECTION



CERTIFICATION DATA SHEET

Model#: 184TH1Y7726 AA WINDING#: T84181 NONE 3
 CONN. DIAGRAM: 005010.20ME ASSEMBLY: F1/F2 CAPABLE
 OUTLINE: 036109ME-1100

TYPICAL MOTOR PERFORMANCE DATA

HP	KW	SYNC. RPM	F.L. RPM	FRAME	ENCLOSURE	KVA CODE	DESIGN		
5	3.7	1800	1760	184TC	TENV	L	INV		
PH	Hz	VOLTS	FL AMPS	START TYPE	DUTY	INSL	S.F	AMB°C	ELEVATION
3	60	230/460	13.4/6.7	INVERTER ONLY	CONTINUOUS	F4	1.0	40	3300

FULL LOAD EFF: 89.5	3/4 LOAD EFF: 90	1/2 LOAD EFF: 89.1	GTD. EFF	ELEC. TYPE	NO LOAD AMPS
FULL LOAD PF: 79	3/4 LOAD PF: 72.1	1/2 LOAD PF: 61.3	87.5	SQ CAGE INV DUTY	6.4 / 3.2

F.L. TORQUE	LOCKED ROTOR AMPS	L.R. TORQUE	B.D. TORQUE	F.L. RISE°C
14.9 LB-FT	122 / 61	42 LB-FT 282	61.5 LB-FT 413	85

SOUND PRESSURE @ 3 FT.	SOUND POWER	ROTOR WK*2	MAX. WK*2	SAFE STALL TIME	STARTS /HOUR	APPROX. MOTOR WGT
62 dBA	72 dBA	0.52 LB-FT*2	0 LB-FT*2	0 SEC.	0	92 LBS.

EQUIVALENT WYE CKT. PARAMETERS (OHMS PER PHASE)

R1	R2	X1	X2	XM
1.42884	1.04895	2.09223	3.37932	63.3339
RM	ZREF	XR	TD	TD0
0	56.7	0	0	0

*** SUPPLEMENTAL INFORMATION ***

DE BRACKET TYPE	ODE BRACKET TYPE	MOUNT TYPE	ORIENTATION	SEVERE DUTY	HAZARDOUS LOCATION	DRIP COVER	SCREENS	PAINT
C-FACE	BRAKE OR ENCODER	RIGID	HORIZONTAL	FALSE	NONE	FALSE	NONE	BLACK (ENAMEL)
BEARINGS		GREASE	SHAFT TYPE	SPECIAL DE	SPECIAL ODE	SHAFT MATERIAL	FRAME MATERIAL	
DE	OPE					1144	ALUMINIUM	
BALL	BALL	POLYREX EM	T	NONE	NONE	STRESSPROOF (C-223)		
6207	6206							

THERMO-PROTECTORS							
THERMOSTATS	PROTECTORS	WDG RTDs	BRG RTDs	THERMISTORS	CONTROL	SPACE /n HEATERS	
TSTATS (NIC)	NOT	NONE	NONE	NONE	FALSE	NONE VOLTS	

If Inverter equals NONE, contact factory for further information

INVERTER TORQUE: CONSTANT 1000.1
INV. HP SPEED RANGE: 2.0 X BASE SPEED
ENCODER: PROVISIONS ONLY
NONE NONE
NONE NONE PPR
BRAKE: PROVISIONS ONLY NONE

*
 N
 O
 T
 E
 S
 *

NONE	P/N	NONE	
NONE	NONE		
NONE FT-LB	NONE V		NONE HZ

DATE: 06/28/2017 06:24:13 AM

FORM 3531 REV. 3 02/07/99

** Subject to change without notice.

