

PRODUCT INFORMATION PACKET

Model No: 5KH37PN33

Catalog No: H171

1/4-1/12 HP 2 speed Fan and Blower HVAC/R Motor, 1 phase, 1800/1800 RPM, 115 V, 48Z Frame, ODP
Self Cooled Motors



Regal and Marathon are trademarks of Regal Beloit Corporation or one of its affiliated companies.
©2020 Regal Beloit Corporation, All Rights Reserved. MC017097E

REGAL

Nameplate Specifications

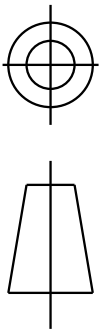
Output HP	1/4-1/12 Hp	Output KW	0.19 kW
Frequency	60 Hz	Voltage	115 V
Current	4.2,2.7 A	Speed	1725/1140 rpm
Service Factor	1.35	Phase	1
Efficiency	58 %	Power Factor	0
Duty	Continuous	Insulation Class	B
Design Code	-	KVA Code	M
Frame	48Z	Enclosure	Drip Proof
Thermal Protection	N/R	Ambient Temperature	40 °C
Drive End Bearing Size	6203	Opp Drive End Bearing Size	6203
UL	Recognized	CSA	Yes
CE	N		

Technical Specifications

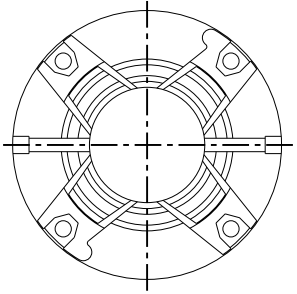
Electrical Type	Split Phase	Starting Method	SM
Poles	4	Rotation	Clockwise/Counterclockwise
Mounting	Resilient Base	Motor Orientation	ANY
Drive End Bearing	BALL	Opp Drive End Bearing	Ball
Frame Material	Rolled Steel	Overall Length	10.69 in
Frame Length	6.62 in	Shaft Diameter	0.500 in
Shaft Extension	1.88 in	Thru-bolts Extension	0 in
Connection Drawing	52A106478AA	Outline Drawing	52A102396P1

This is an uncontrolled document once printed or downloaded and is subject to change without notice. Date Created:03/11/2020

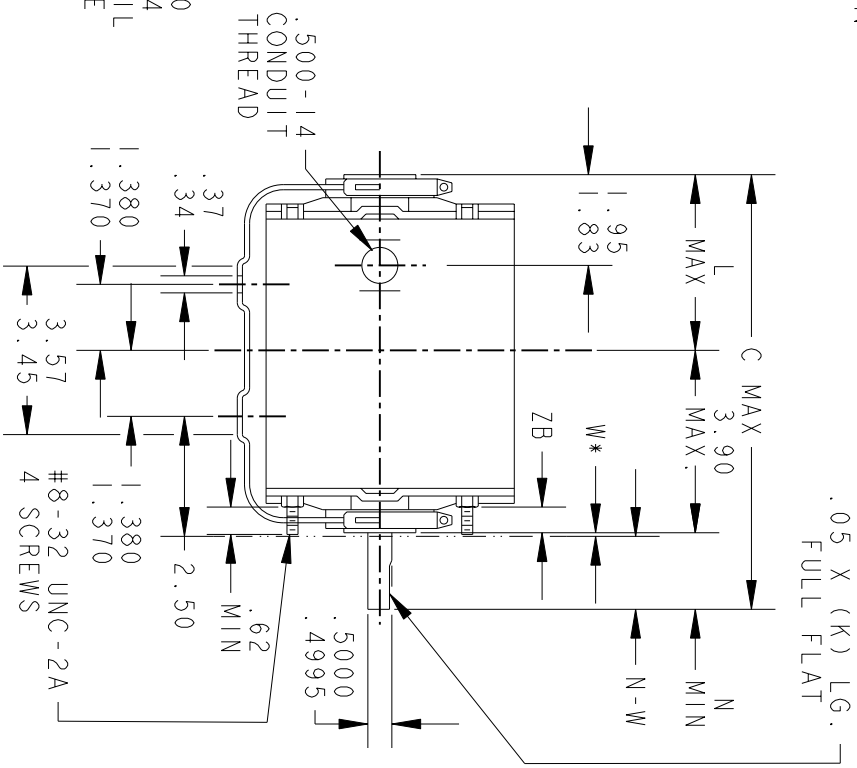
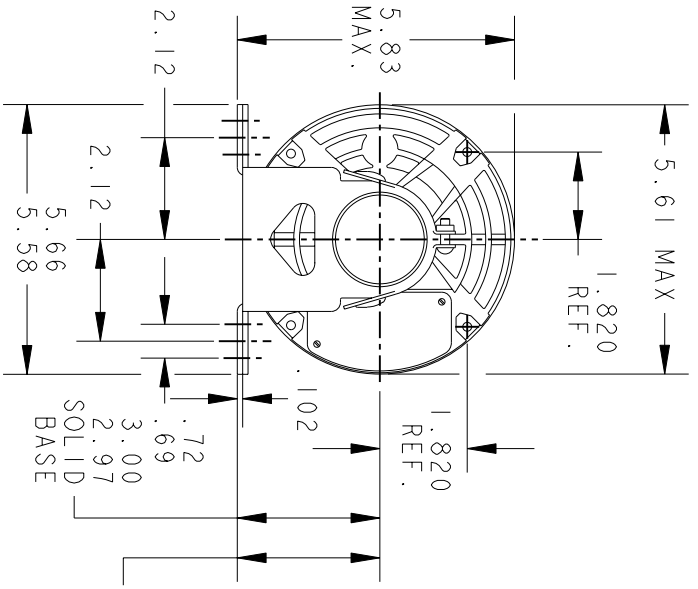
THIRD ANGLE PROJECTION



REVISIONS		DESCRIPTION	DATE	APPROVED
REV. 4	REDRAWN NO CHANGE	T196-22390	07/10/96	M. D. P
REV. 5	CHG TO RBC FORMAT AS PER	IS05-1777	12/30/05	GOVARDAN



VIEW SHOWING
PE VENTILATION
OPENINGS



*W IS A CLEARANCE DUE TO VARIATION IN PARTS & ASSEMBLY.

PT	TYPE	GE SIZE	NEMA FR	K	L	N	N-W	ZB	
1	KH	37	48	10.69	1.54	5.05	1.88	2.01/1.79	.55/.52

SIGNATURES		DATE
MODEL	H.0	08/24/77
DETAIL	.	.
CHECKED	.	.
ENGRG	.	.
MFG	.	.
QUALITY	.	.
ISSUED	M.D.P	07/10/96
SOLID MODEL:	52A102396	

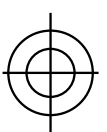


REGAL-BELOTT CORPORATION

OUTLINE

FORM N - GENERAL PURPOSE MOTOR - DRIP PROOF -
SOLID OR RESIL BASE - BALL OR SLEEVE BEARING

TITLE	SCALE: 0.250	REF. No.:	SHEET 1 of 1
SIZE: DRAWING	A		
REV	52A102396	5	



THIRD ANGLE PROJECTION

REVISIONS

REV.	DESCRIPTION	DATE	APPROVED
5	UPDATED TO RBC FORMAT	01/09/06	MAM

EITHER ROTATION
 SINGLE VOLTAGE
 TYPE KC, KCR, OR KH
 2 SPEED
 POLE CHANGING

T1 OR BLUE

T2 OR WHITE

T8 OR RED

J10 OR RED

MAIN (HI)

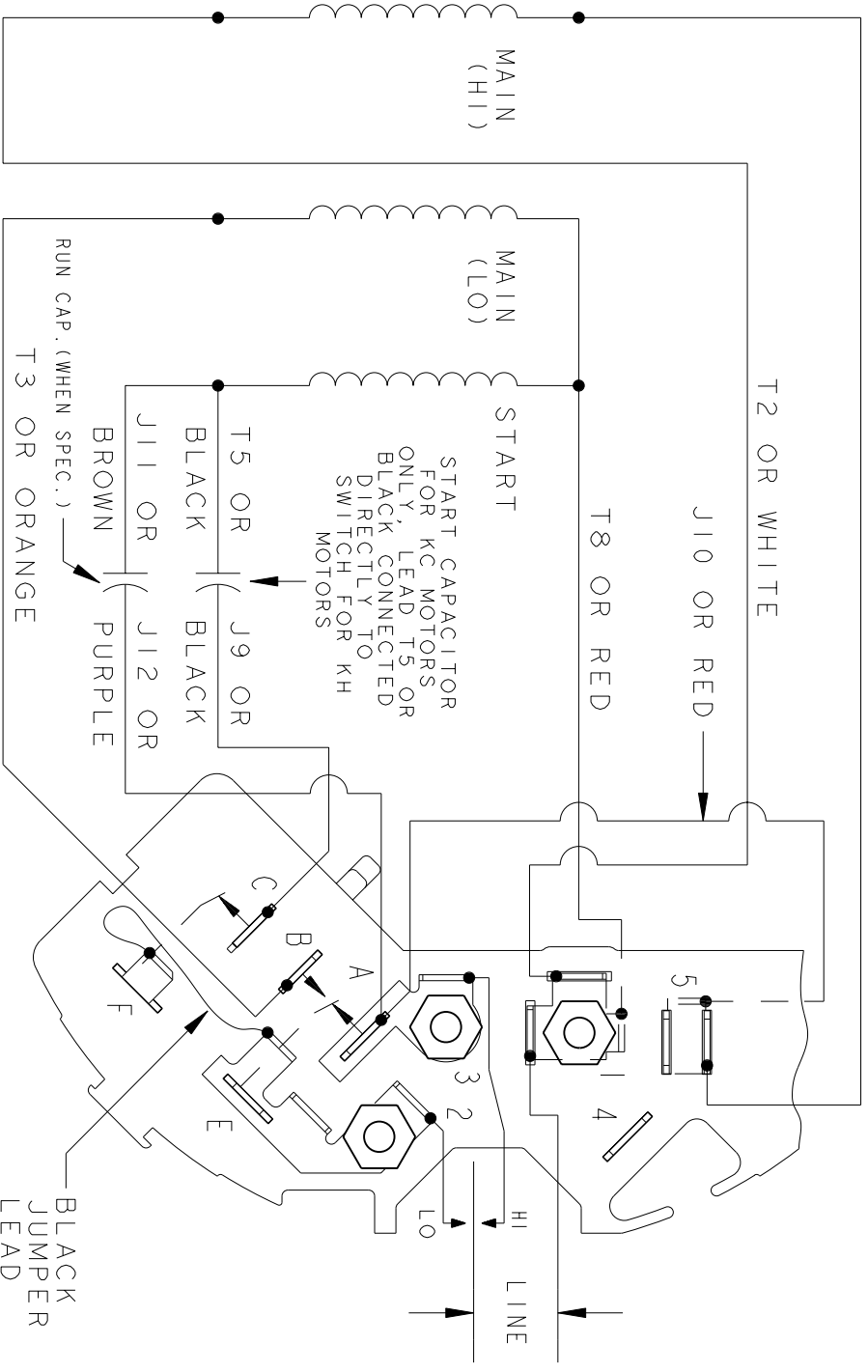
MAIN (LO)

START

START CAPACITOR
 FOR KC MOTORS
 ONLY, LEAD T5 OR
 BLACK CONNECTED
 DIRECTLY TO
 SWITCH FOR KH
 MOTORS

T5 OR BLACK
 J11 OR BROWN
 J9 OR BLACK
 J12 OR PURPLE
 RUN CAP. (WHEN SPEC.)
 T3 OR ORANGE

BLACK
 JUMPER
 LEAD



NOTE #1 - TO REVERSE ROTATION INTERCHANGE BLUE (T1) AND WHITE (T2) LEADS.
 NOTE #2 - WHEN MORE THAN ONE CAPACITOR IS USED CONNECT IN PARALLEL.

SWITCH (D) - 115D9558BA

CONNECTION LABEL - 52X332073

REF. DIAG. - 121A865

SIGNATURES	DATE
MODEL M.D.P.	12/14/87
DETAIL	
CHECKED	
ENGRG	
MFG	
QUALITY	
ISSUED M.D.P.	12/14/87
MATERIAL	SOLID MODEL: 52A106478AA



REGAL-BELOIT CORPORATION

TITLE CONNECTION DIAGRAM

FMF: 5KH36KN114G

52A106478AA

REV 5

SIZE A DRAWING

SCALE: 1.000 REF. No.:

SHEET 1 of 1