

# PRODUCT INFORMATION PACKET

Model No: 048S34S2004  
Catalog No: O005  
1/8,3450,SEMI,48N,1/60/115  
Single Phase



Regal and Marathon are trademarks of Regal Beloit Corporation or one of its affiliated companies.

©2018 Regal Beloit Corporation, All Rights Reserved. MC017097E



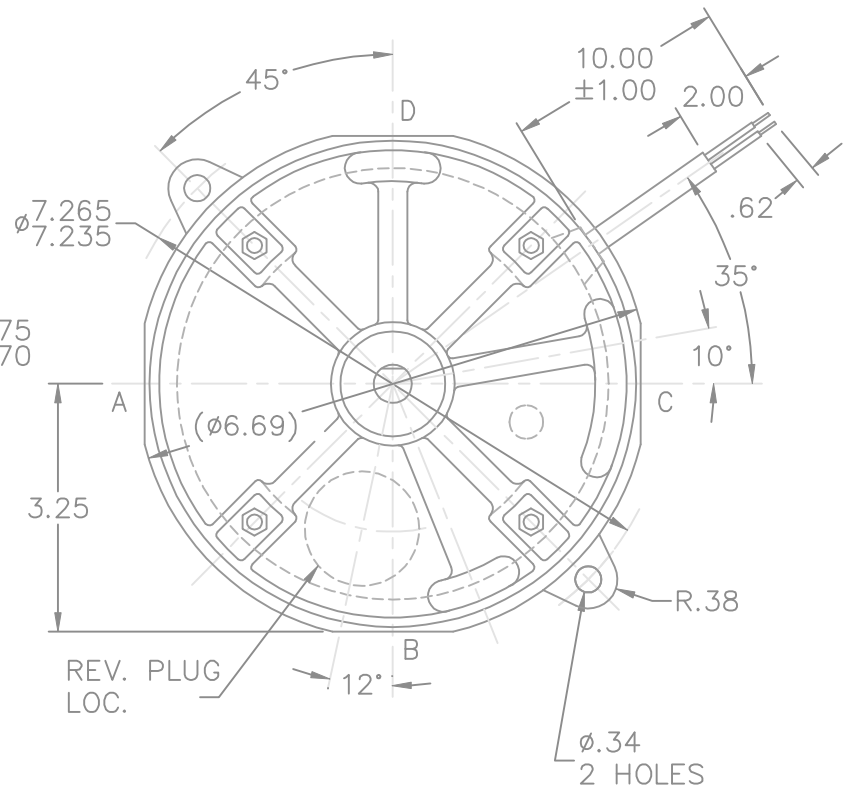
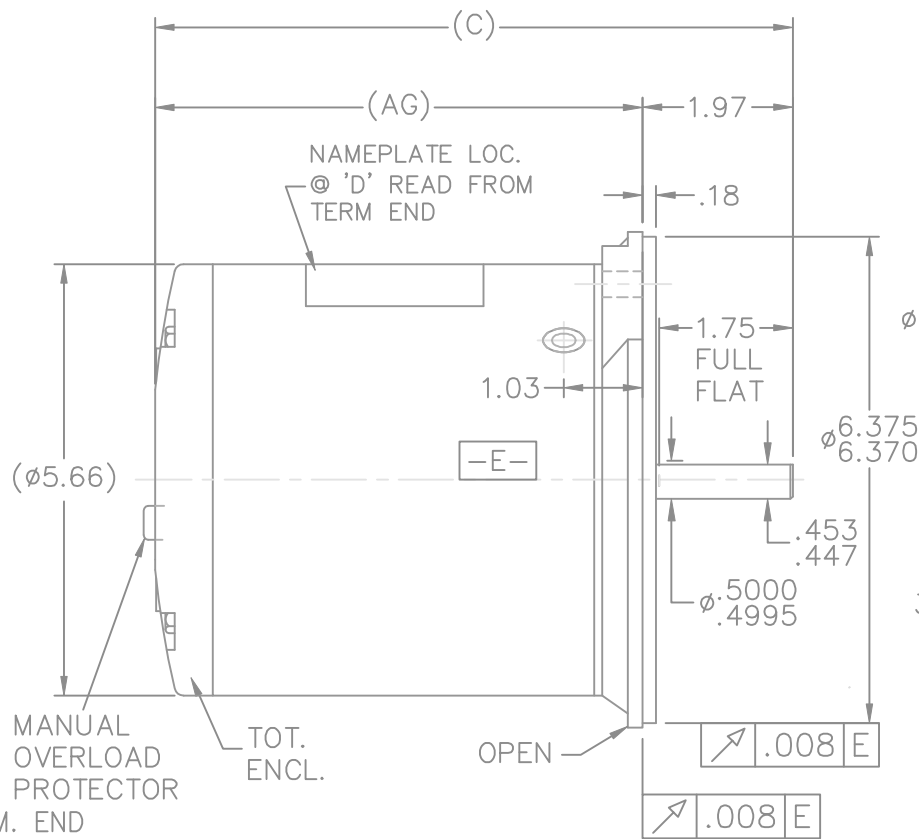
### Nameplate Specifications

Output HP	<b>0.13 Hp</b>	Output KW	<b>0.09 kW</b>
Frequency	<b>60 Hz</b>	Voltage	<b>115 V</b>
Current	<b>2.3 A</b>	Speed	<b>3450 rpm</b>
Service Factor	<b>1</b>	Phase	<b>1</b>
Efficiency	<b>47.7 %</b>	Duty	<b>Continuous</b>
Insulation Class	<b>B</b>	Design Code	<b>NO DESIGN CODE</b>
KVA Code	<b>U</b>	Frame	<b>48N</b>
Enclosure	<b>Semi Enclosed</b>	Overload Protector	<b>Manual</b>
Ambient Temperature	<b>40 °C</b>	Drive End Bearing Size	<b>6203</b>
Opp Drive End Bearing Size	<b>6203</b>	UL	<b>Recognized</b>
CSA	<b>Y</b>	CE	<b>Y</b>
IP Code	<b>10</b>		

### Technical Specifications

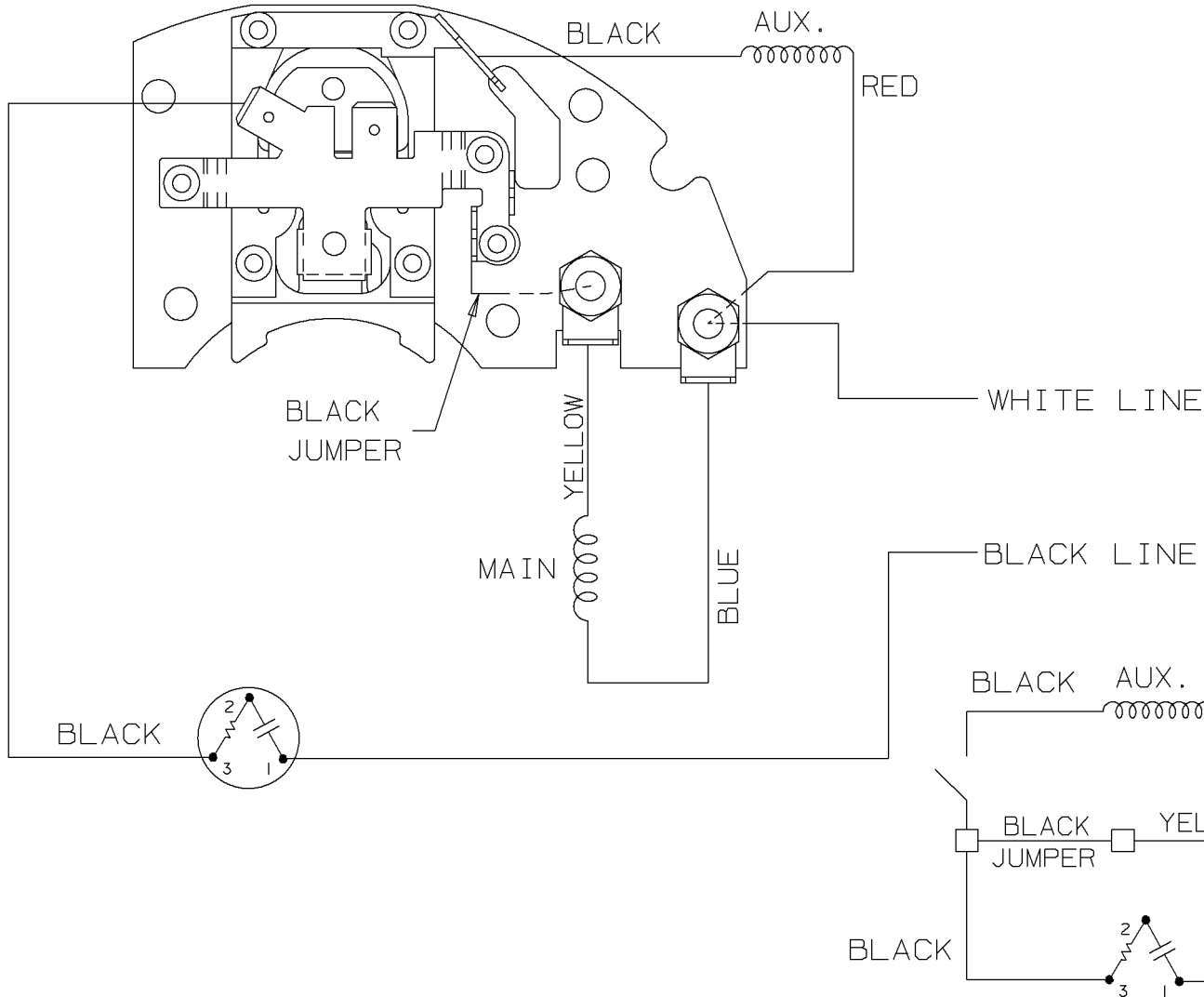
Electrical Type	<b>Split Phase</b>	Starting Method	<b>Across The Line</b>
Poles	<b>2</b>	Rotation	<b>Selective Clockwise</b>
Mounting	<b>Round</b>	Motor Orientation	<b>Horizontal</b>
Drive End Bearing	<b>Ball</b>	Opp Drive End Bearing	<b>Ball</b>
Frame Material	<b>Rolled Steel</b>	Shaft Type	<b>NEMA 48</b>
Overall Length	<b>7.09 in</b>	Frame Length	<b>3.75 in</b>
Shaft Diameter	<b>0.500 in</b>	Shaft Extension	<b>1.97 in</b>
Assembly/Box Mounting	<b>F1 Only</b>		
Outline Drawing	<b>A-SS403842-375</b>	Connection Diagram	<b>A-EE7154BZ</b>

This is an uncontrolled document once printed or downloaded and is subject to change without notice. Date Created: 06/29/2018



TERM. END			
DASH	FR	C	AG
375	48	7.09	5.12

				TOLERANCES UNLESS SPECIFIED				DRAWN NB 04-04-2009					
				DEC.	INCHES			CHK SP 04-04-2009					
				.X	±.1			APPD NB 04-04-2009					
				.XX	±.03			SCALE 7=16					
				.XXX	±.005			REF SS75995					
				.XXXX	±.0005	MAT'L.		FMF 09-0323					
NO.	REVISION			BY & DATE	CHK	ANG	±7'30"	FINISH	PREV				
THIS DRAWING IN DESIGN AND DETAIL IS OUR PROPERTY AND MUST NOT BE USED EXCEPT IN CONNECTION WITH OUR WORK ALL RIGHTS OF DESIGN AND INVENTION ARE RESERVED THIS IS AN ELECTRONICALLY GENERATED DOCUMENT - DO NOT SCALE THIS PRINT					RFP	04-04-2009	CAD FILE	SS403842	SIZE	DRAWING NO.	PAGE	OF	REV.
					DIST	WP			A	SS403842			



SINGLE HIGH VOLTAGE  
SPLIT PHASE MOTOR  
WITH OVERLOAD PROTECTOR

CW ROTATION SHOWN

CCW ROTATION -  
INTERCHANGE YELLOW & BLUE  
LEADS ON THE TERMINAL  
BOARD.

USE ON BUILDS WITH CORD  
ASSEMBLY

NOTE: LEAD COLOR CHANGED FROM  
EE7154BS.

3	08-22-2001	REVERSED SOLDER POST POSITION ON SWITCH ASSEMBLY CN 34233	TJB	✓ MAX. SURFACE ROUGHNESS UNLESS NOTED OTHERWISE	UNLESS OTHERWISE SPECIFIED DIMENSIONS ARE IN INCHES TOL. ON XX± XXX±.005 XXXX±.0005 ANGLES±			
2	07-06-2001	ADDED BLACK JUMPER NOTE CN 31215	TJB	MATL SPEC				DRAWN BY TJB 04-27-2001
1	05-23-2001	NEW DRAWING	TJB	FINISH				CHKD BY ML 05-23-2001
REV	DATE	CHANGE	NAME	REFERENCE DRW.	WAUSAU, WISCONSIN 54401			
				PART NAME CONNECTION DIAGRAM	DRWG NO			A- EE7154BZ

SHOP BOOK

PURCHASED

DISTRIBUTION - ~~W~~ - ~~B~~ - WP - ~~M~~ - ~~R~~

CADD FILE NO.

EE7154BZ

```
ERROR: syntaxerror  
OFFENDING COMMAND: --nostringval--
```

```
STACK:
```

```
 /im  
-savelevel-
```

