

# PRODUCT INFORMATION PACKET

Model No: 5KH36NNB166

Catalog No: HG455

0.13 HP Explosion Proof Motor, 1 phase, 1200 RPM, 115 V, 48 Frame, EPNV  
Explosion Proof NEMA Motors

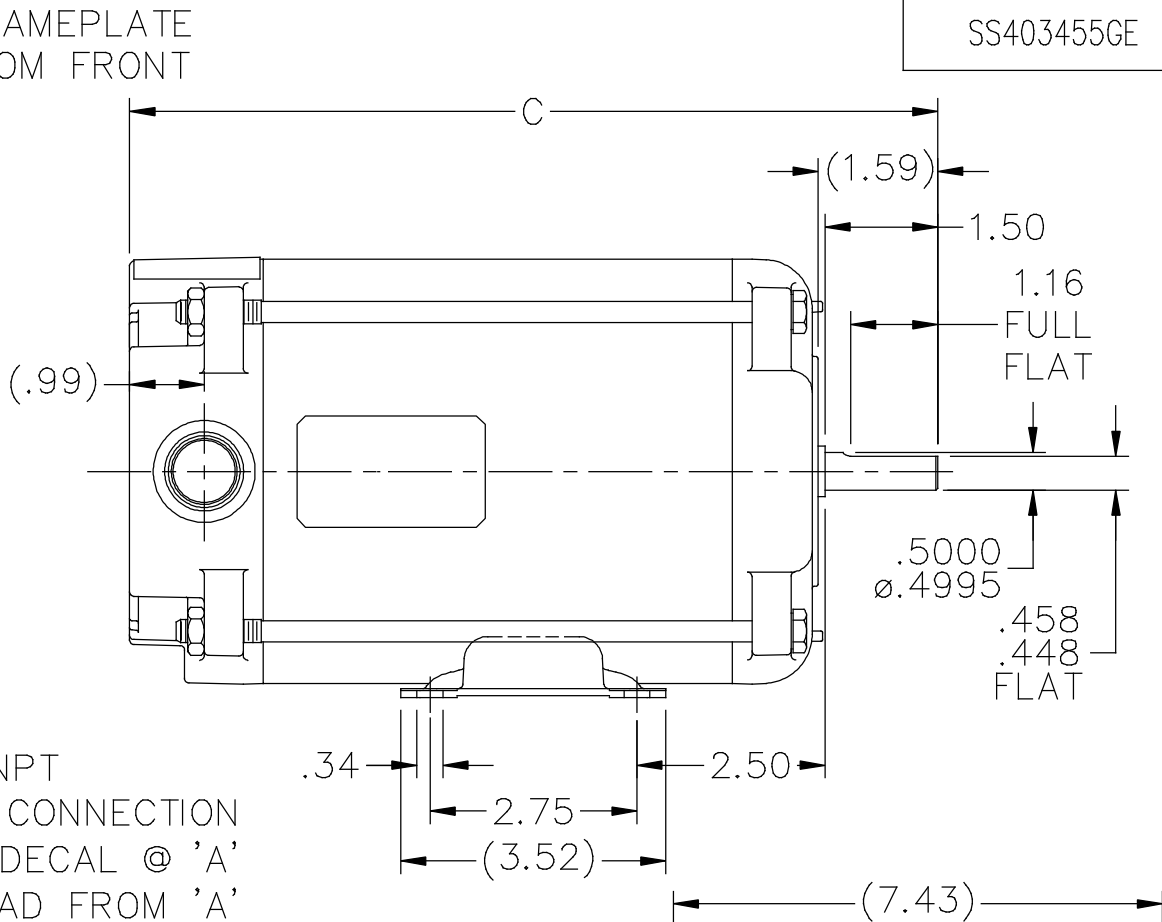
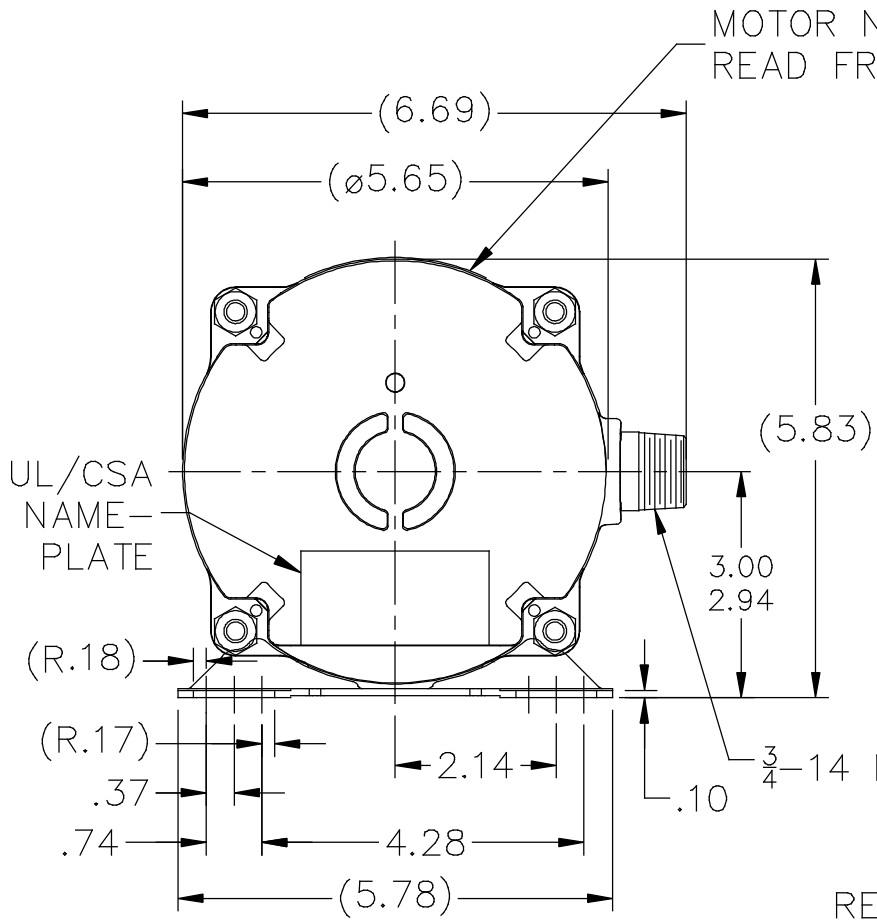


### Nameplate Specifications

Output HP	0.13 Hp	Output KW	0.09 kW
Frequency	60 Hz	Voltage	115 V
Current	2.8 A	Speed	1140 rpm
Service Factor	1	Phase	1
Efficiency	53.3 %	Power Factor	54.2
Duty	Continuous	Insulation Class	A
Design Code	NO DESIGN CODE	KVA Code	R
Frame	48	Enclosure	Explosion Proof Non Ventilated
Thermal Protection	Automatic	Ambient Temperature	40 °C
Drive End Bearing Size	6203	Opp Drive End Bearing Size	6203
UL	UL Listed And CSA Certified	CSA	N
CE	N	IP Code	54
Hazardous Location	EXP PROOF CL I GR D CL II GR F&G T3B		

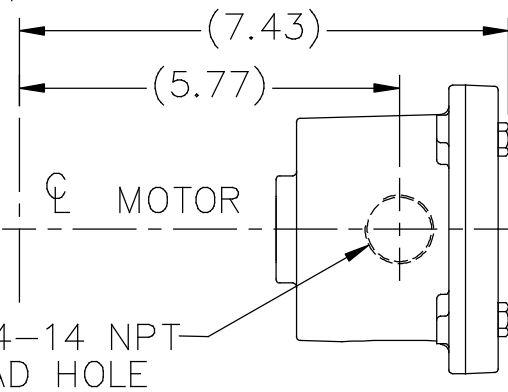
### Technical Specifications

Electrical Type	Split Phase	Starting Method	Across The Line
Poles	6	Rotation	Selective Counterclockwise
Resistance Main	0 Ohms	Mounting	Rigid base
Motor Orientation	Horizontal	Drive End Bearing	Ball
Opp Drive End Bearing	Ball	Frame Material	Rolled Steel
Shaft Type	NEMA 48	Overall Length	10.74 in
Frame Length	6.23 in	Shaft Diameter	0.500 in
Shaft Extension	1.59 in	Assembly/Box Mounting	F1 ONLY
Outline Drawing	A-SS403455GE-623	Connection Drawing	A-EE7116K-GE



LEAD DESCRIPTION: 1 BLACK, 1 PURPLE, 1 BLUE, 1 GREEN, 1 YELLOW, AND 1 RED ALL EXITING A SEALED PIPE NIPPLE, 26" LONG.

VIEW OF CONDUIT BOX



DASH	C
517	9.68
580	10.31
623	10.74

NO.	REVISION	BY & DATE	CHK	TOLERANCES UNLESS SPECIFIED		FINISH
				DEC.	INCHES	
3	ADDED VIEW OF COND BOX INSTALL ISAAC 12-5139	WGJ 03-05-2013	DD	.X	±.1	
2	CHG. LEADS FROM 6" TO 26" CN39528	RWR 08/26/2005	ML	.XX	±.03	
1	ADD UL/CSA AND MOTOR NAMEPLATES, CHANGED STUDS TO OVERBOLTS CN 46061	MJK 04/29/2005		.XXX	±.005	
				.XXXX	±.0005	
				ANG	±7'30"	



TITLE OUTLINE  
48 FRAME - XP

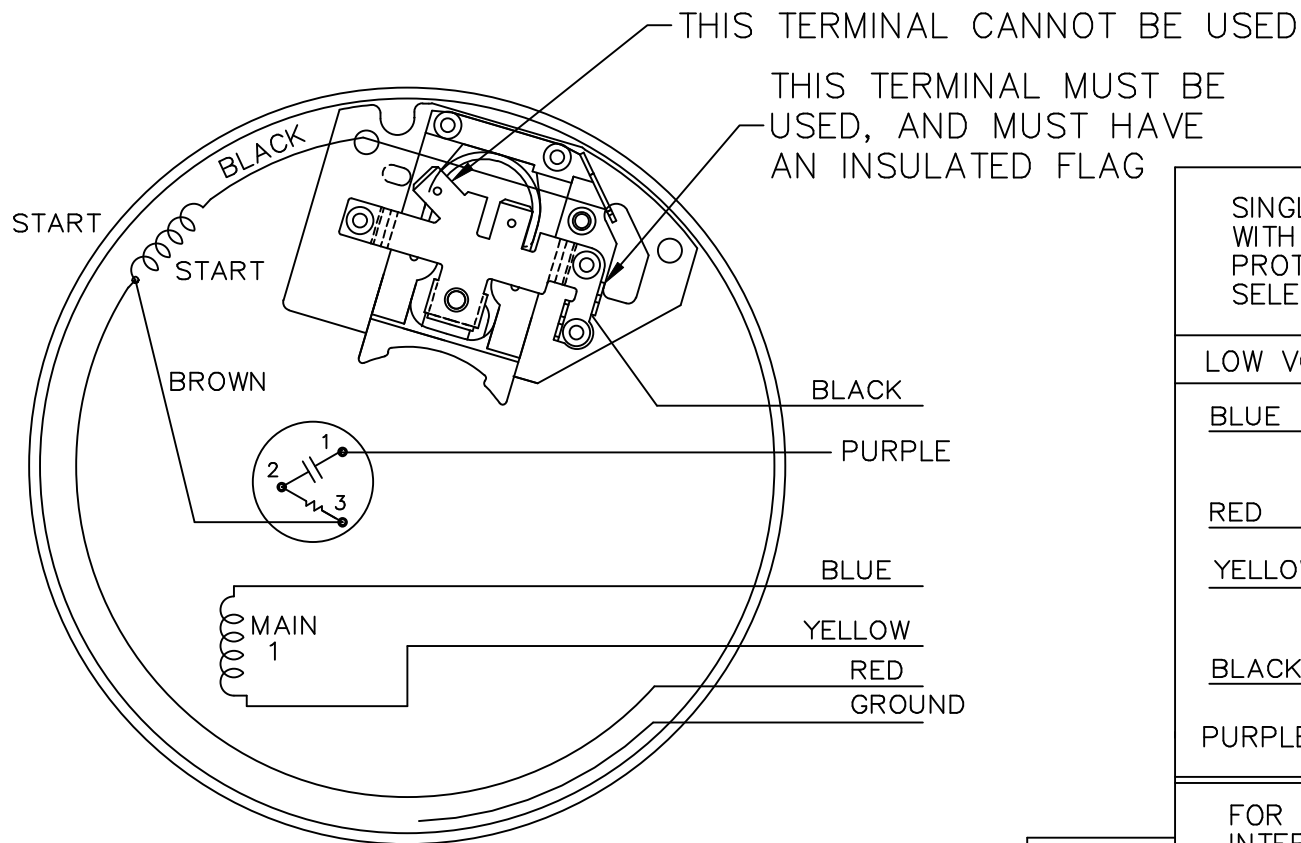
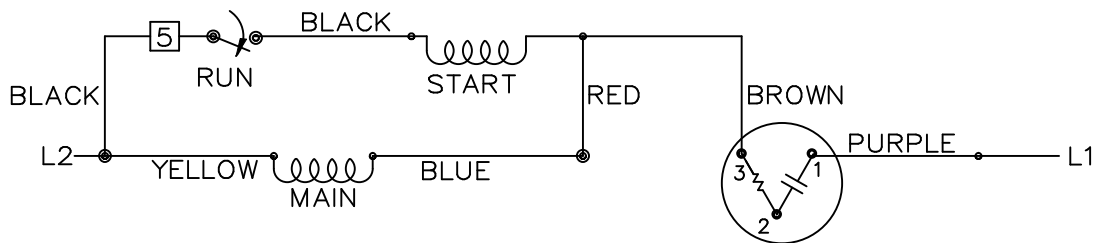
DRAWN	RWR 03-15-2005
CHK	ML 03-18-2005
APPD	MJS 03-21-2005
SCALE	3=8
REF	A-SS403455
FMF	
PREV	

THIS DRAWING IN DESIGN AND DETAIL IS OUR PROPERTY AND MUST NOT BE USED EXCEPT IN CONNECTION WITH OUR WORK ALL RIGHTS OF DESIGN AND INVENTION ARE RESERVED THIS IS AN ELECTRONICALLY GENERATED DOCUMENT - DO NOT SCALE THIS PRINT

RFP	03-21-2005
DIST	WP

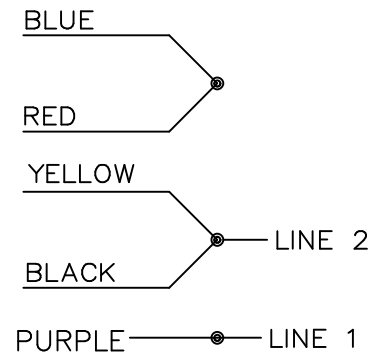
CAD FILE	ss403455ge
----------	------------

SIZE	A	DRAWING NO.	SS403455GE	PAGE	1 OF 1	REV.	3
------	---	-------------	------------	------	--------	------	---



SINGLE VOLTAGE  
WITH OVERLOAD  
PROTECTION  
SELECT ROTATION

LOW VOLT. CCW ROT.



FOR CW ROT.  
INTERCHANGE BLUE  
WITH YELLOW LEAD.

- A-S4CU1
- A-S6A4
- A-S4A2

		TOLERANCES UNLESS SPECIFIED		MARATHON ELECTRIC		DRAWN NB 03-14-2006			
		DEC.	INCHES			CHK	VL 03-14-2006		
		.X	±.1	TITLE CONNECTION DIAGRAM		APPD	VL 03-14-2006		
		.XX	±.02			SCALE	5=8		
		.XXX	±.005			REF	EE7116K-GE		
		.XXXX	±.0005			FMF	MU71130		
NO.	REVISION	BY & DATE	CHK	ANG	±7'30"	FINISH	PREV		
			RFP	03-16-2006	CAD FILE	EE7116K	SIZE	DRAWING NO. PAGE 1 OF 1 REV.	
						DIST	WP	A	EE7116K

THIS DRAWING IN DESIGN AND DETAIL IS OUR PROPERTY AND MUST NOT BE USED EXCEPT IN CONNECTION WITH OUR WORK ALL RIGHTS OF DESIGN AND INVENTION ARE RESERVED THIS IS AN ELECTRONICALLY GENERATED DOCUMENT - DO NOT SCALE THIS PRINT

