

PRODUCT INFORMATION PACKET

marathon®
Motors

Model No: 5KH39QN5550X

Catalog No: 4404

1/8 HP Definite Purpose AC Motor, 1 phase, 1800 RPM, 115 V, 48Y Frame, ODP
Other Purpose Motors



Regal and Marathon are trademarks of Regal Beloit Corporation or one of its affiliated companies.
©2020 Regal Beloit Corporation, All Rights Reserved. MC017097E

REGAL

Nameplate Specifications

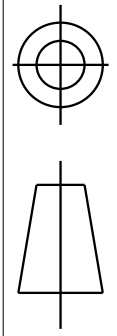
Output HP	0.13 Hp	Output KW	0.10 kW
Frequency	60 Hz	Voltage	115 V
Current	2.6 A	Speed	1725 rpm
Service Factor	1.4	Phase	1
Efficiency	51.5 %	Power Factor	0
Duty	Continuous	Insulation Class	B
KVA Code	U	Frame	48Y
Enclosure	Drip Proof	Thermal Protection	AUTO
Ambient Temperature	40 °C	Drive End Bearing Size	6203
Opp Drive End Bearing Size	6203	UL	Recognized
CSA	Yes	CE	N

Technical Specifications

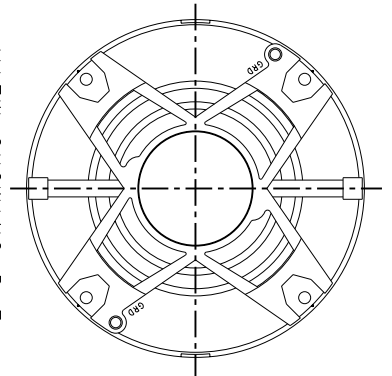
Electrical Type	Split Phase	Starting Method	SM
Poles	4	Rotation	Counterclockwise
Mounting	Resilient Rings	Motor Orientation	ANY
Drive End Bearing	BALL	Opp Drive End Bearing	Ball
Frame Material	Rolled Steel	Overall Length	8.9 in
Frame Length	5.16 in	Shaft Diameter	0.500 in
Shaft Extension	1.5 in		
Connection Drawing	52A105380AA	Outline Drawing	52A107022P1

This is an uncontrolled document once printed or downloaded and is subject to change without notice. Date Created:03/11/2020

THIRD ANGLE PROJECTION

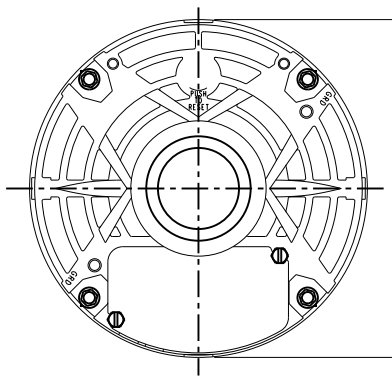


REVISIONS			
REV.	DESCRIPTION	DATE	APPROVED
3	CHANGES PER TI95-21, 651.	02/16/95	M.D. PAPE
4	ADDED PART #4.	05/08/04	DURGA
5	CHG TO RBC FORMAT PER IS05-1777	02/16/06	SUDHA

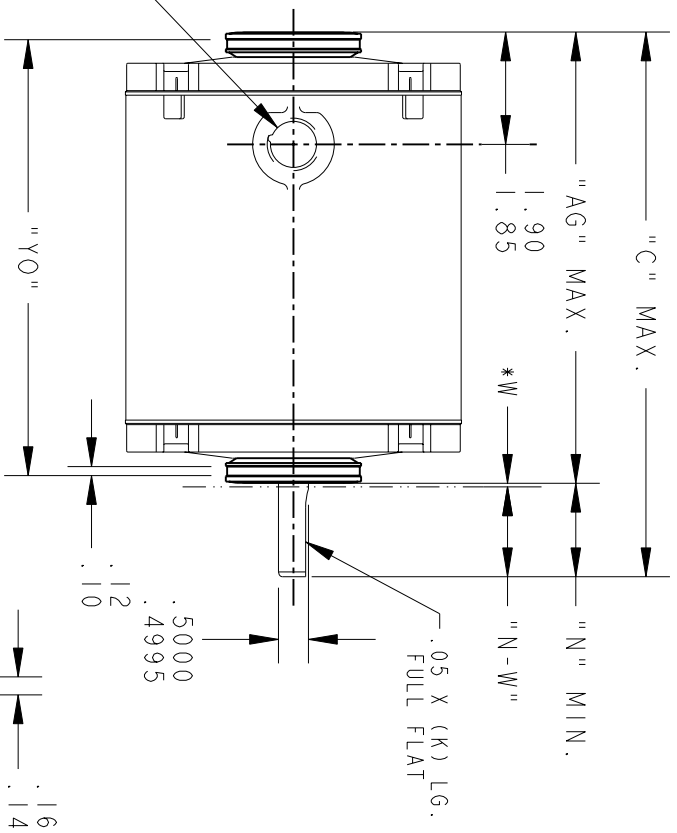


VIEW SHOWING P.E.
VENTILATION OPENINGS

5.61 MAX.

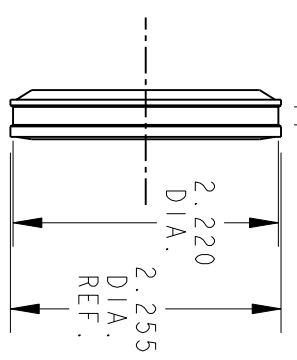


500-14
CONDUIT
THREAD



.05 X (K) LG.
FULL FLAT

P	TYPE	GE SIZE	NEMA FR	"C"	"AG"	"YO"	"N"	"K"	"N-W"	SHL. LGTH. REF.
4	KH	33	48Y	9.18	7.56	7.33 7.12	1.50	1.16	1.63/1.41	5.41
3	KH	37	48Y	10.39	8.77	8.54 8.33	1.50	1.16	1.63/1.41	6.62
2	KH	38	48Y	12.60	9.37	8.89 8.68	3.11	2.80	3.04/3.02	7.22
1	KH	32	48Y	8.93	7.31	7.08 6.87	1.50	1.16	1.63/1.41	5.16



SIGNATURES		DATE
MODEL	MAM	03/17/90
DETAIL		
CHECKED		
ENGRG		
MFG		
QUALITY		
ISSUED	MAM	03/17/90



REGAL-BELOTT CORPORATION

TITLE
OUTLINE

DRIP PROOF - RESIL. RING - SLV./BALL BRG.
5KH39QN5550X

FOR ADDITIONAL INFO REFER TO:	
APPLIED PRACTICES	✓
DIMENSIONS ARE IN INCHES	✓
MATERIAL	SOLID MODEL: 52A107022

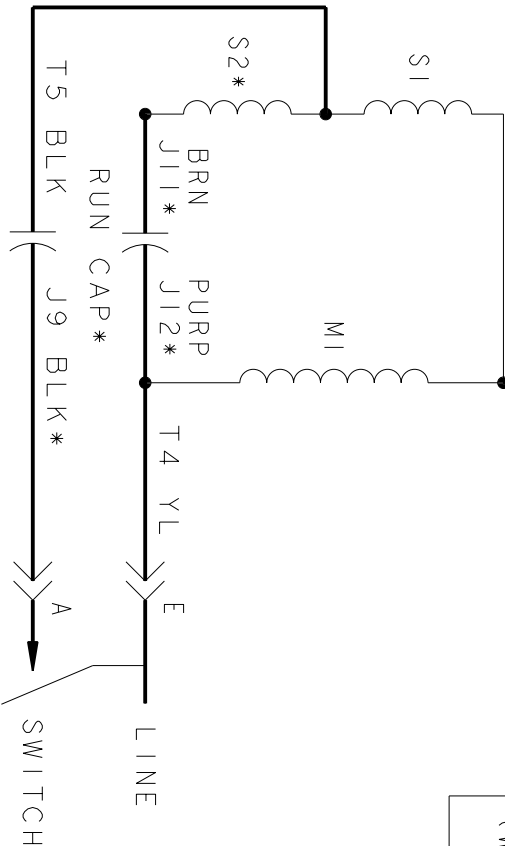
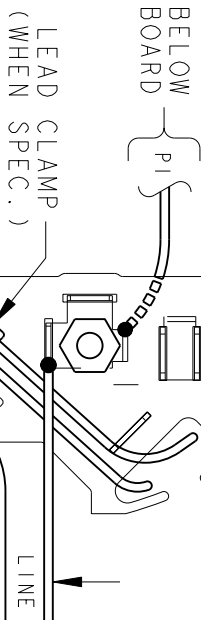
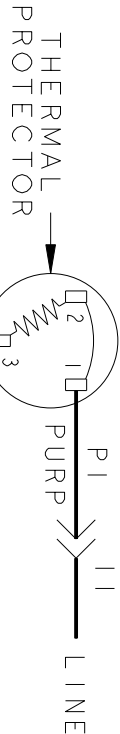
SIZE	DRAWING	SCALE: 0.313	REF. No:	SHEET 1 of 1
A				

52A107022

REV
5

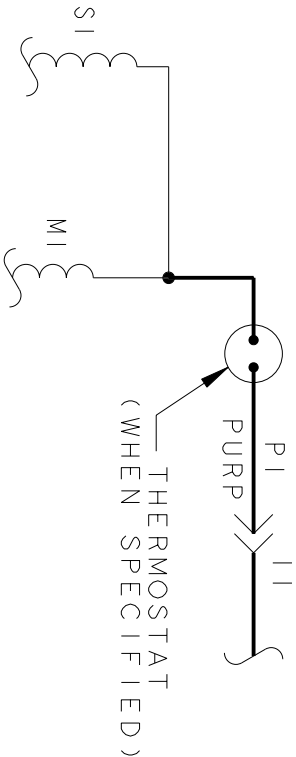
THIRD ANGLE PROJECTION		REVISIONS		
REV.	DESCRIPTION	DATE	APPROVED	
10	ADDED "KHC" PER DS09-11133	07/14/09	MADHU	

SET ROTATION, SINGLE VOLTAGE, TYPE KC, KCR, KH & KHC WITH THERMAL PROTECTION



START CAP*
CONNECTION

SWITCH BOARD CONNECTION



(OPTIONAL PROTECTOR DESIGN)

OPTIONAL BOARD CONNECTION

NOTE #1 - START CAP & J9 WHEN SPECIFIED (*). IF NO CAPACITOR (KH), CONNECT T5 DIRECTLY TO SWITCH (A). WHEN MORE THAN ONE CAPACITOR IS USED, CONNECT IN PARALLEL.

NOTE #2 - EXTRA START (S2), RUN CAP, J11, & J12 WHEN SPECIFIED.

SWITCH (C) - 115D958AB

REF. DIAG. - NONE

CONN. LABEL - 52X332046

SIGNATURES		DATE
MODEL	M.D. PAPE	06/29/87
DETAIL		
CHECKED		
ENGRG		
MFG		
APPLIED PRACTICES	QUALITY	
DIMENSIONS ARE IN INCHES	ISSUED	M.D.P. 11/14/00
MATERIAL	SOLID MODEL: 52A105380AA	



REGAL-BELOIT CORPORATION

TITLE
CONNECTION DIAGRAM

FMF: 30 FRAME SWITCH REDESIGN

SIZE: DRAWING
A

52A105380AA 10