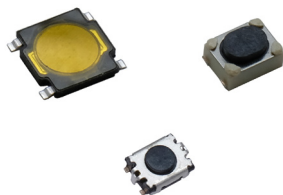


# RK Series Microminiature SMT Top Actuated Tact Switch

**NEW**



## Features/Benefits

- Low profile & microminiature package
- SMT termination
- Hard actuator
- Different actuation forces
- Life cycles up to 500K

## Typical Applications

- Keyfob
- Navigation
- Health & medical devices

B

Tactile Switches

## Specifications

FUNCTION: momentary action

CONTACT ARRANGEMENT: 1 make contact = SPST N.O.

TERMINALS: SMT termination

TRAVEL:

RKA2	0.20 ± 0.1 mm
RKB2	0.20 ± 0.1 mm
RKC	0.15 ± 0.1 mm

## Mechanical

Product Description	Operating Force	Life Cycles
RKB2SJM250SMTR LFS	180 gf	100,000
RKB2SJK250SMTR LFS	250 gf	50,000
RKB2SJG250SMTR LFS	400 gf	100,000
RKA2SGM055SMTR LFS	160 gf	500,000
RKA2SGK055SMTR LFS	250 gf	200,000
RKA2SGG055SMTR LFS	400 gf	100,000
RKA2SGS055SMTR LFS	540 gf	100,000
RKC GG140 SMTR LFS	450 gf	200,000
RKC GG140 G SMTR LFS	450 gf	200,000

## Electrical

	Max. Voltage	Max. Current	Contact Resistance	Insulation Resistance
RKA2	DC 15V	20 mA max.	500mΩ max.	50MΩ min.
RKB2	DC 12V	50 mA max.	200mΩ max.	100MΩ min.
RKC	DC 12V	50 mA max.	2Ω max.	100MΩ min.

DIELECTRIC STRENGTH: 250 VA C (1 minute)

BOUNCE TIME: ≤ 10 ms

## Environmental

OPERATING TEMPERATURE:

RKA2	-40°C to 85°C
RKB2	-40°C to 90°C
RKC	-40°C to 85°C

## Process

SOLDERING: This component is suited to the following methods:  
Infrared Reflow Soldering in accordance with IEC61760-1

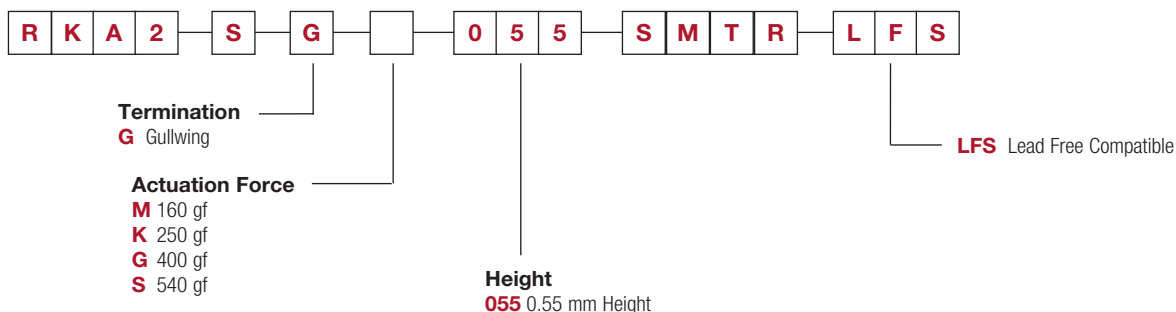
## Packaging

RKA2	5,000 pieces per reel
RKB2	3,000 pieces per reel
RKC	9,500 pieces per reel

## How To Order

Our easy build-a-switch concept allows you to mix and match options to create the switch you need. To order, select desired option from each category and place it in the appropriate box.

For any part number different from those listed below, please consult your local representative.

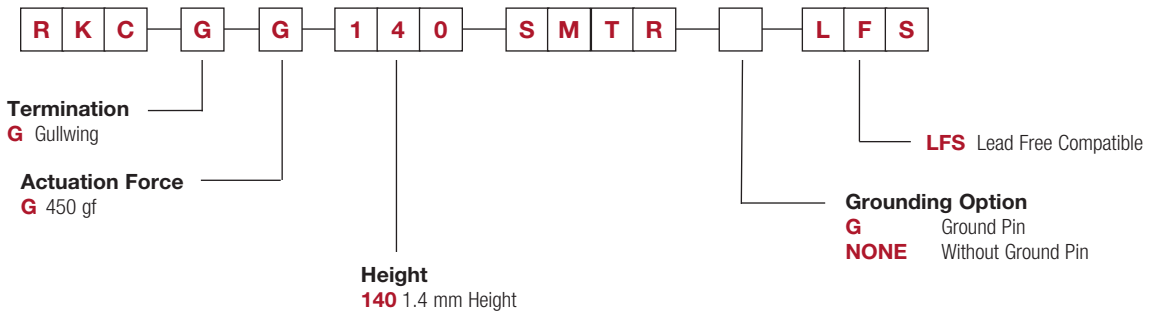
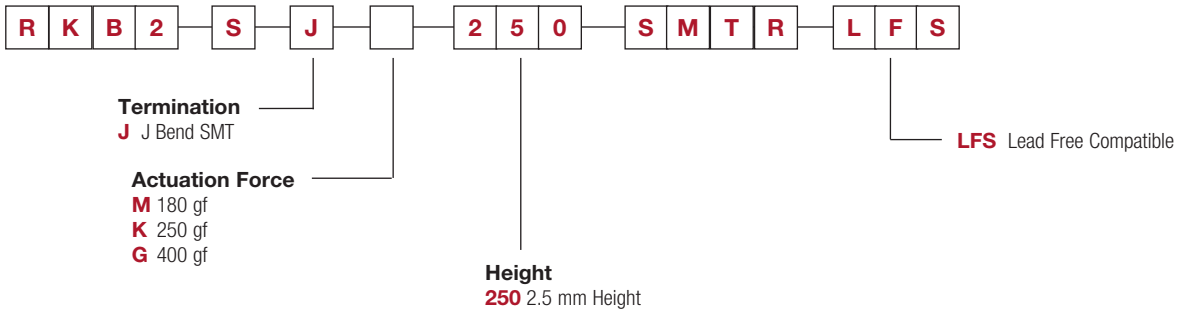


25 Mar 21

Dimensions are shown: mm  
Specifications and dimensions subject to change

**NEW**

# RK Series Microminiature SMT Top Actuated Tact Switch



**B**

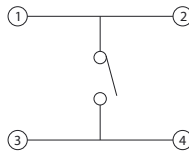
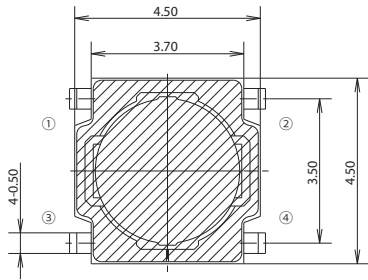
Tactile Switches

# RK Series Microminiature SMT Top Actuated Tact Switch

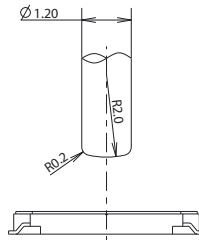
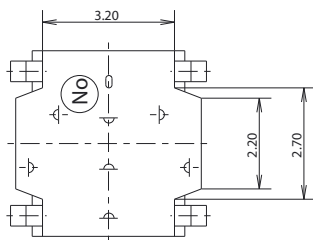
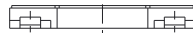
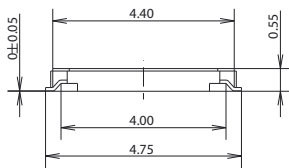
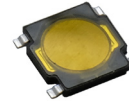
**NEW**

**RKA2** 4.5 X 4.5 X 0.55 MM

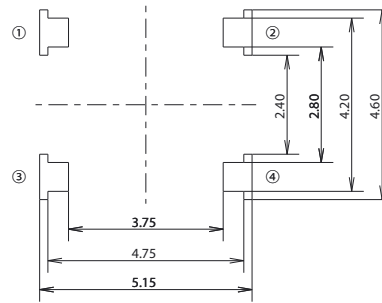
Tactile Switches



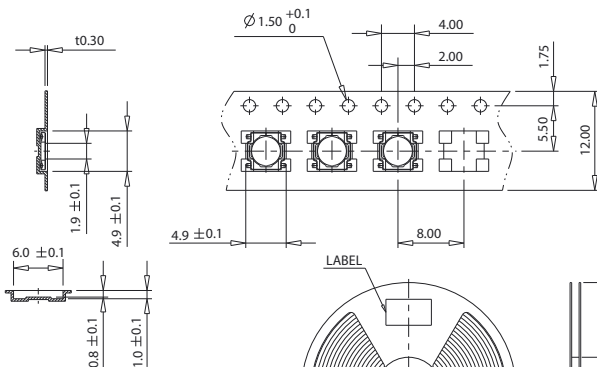
CIRCUIT DIAGRAM



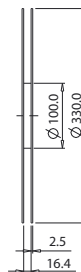
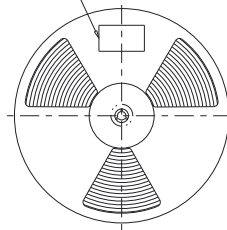
SET MAKER KNOB SIZE



P.C.B MOUNTING SOLDER LAND DIMENSION



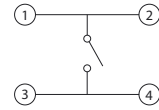
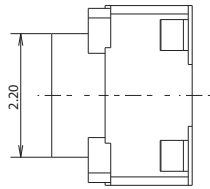
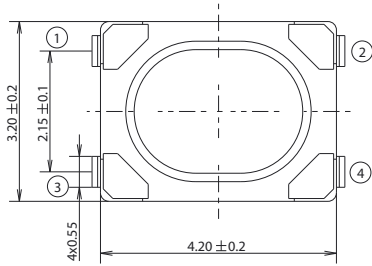
- 1. 5,000 PCS SWITCHES PER 1 REEL
- 2. GENERAL TOLERANCE : ±0.1



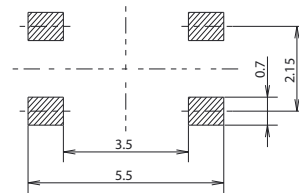
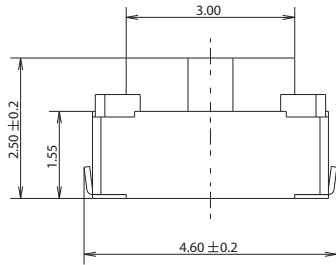
**NEW**

# RK Series Microminiature SMT Top Actuated Tact Switch

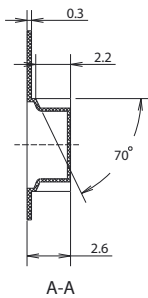
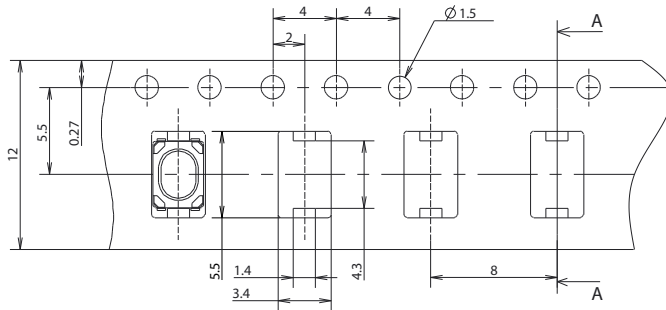
**RKB2 4.2 X 3.2 X 2.5 MM**



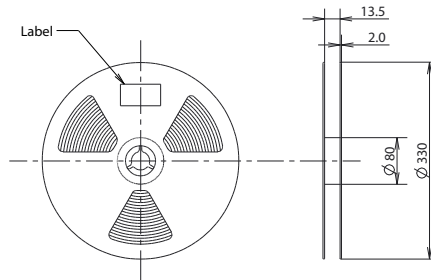
CIRCUIT DIAGRAM



P.C.B LAND DIMENSION



A-A



Reel  
Scale 1:3

Note:  
1. 3K pcs Switches per reel.  
2. General tolerance: 0.3mm.



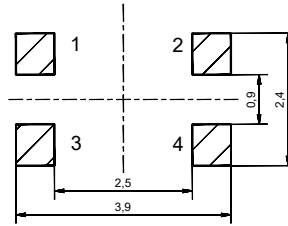
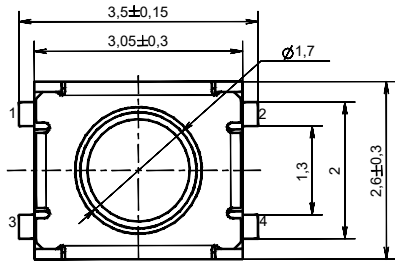
**B**

**Tactile Switches**

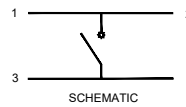
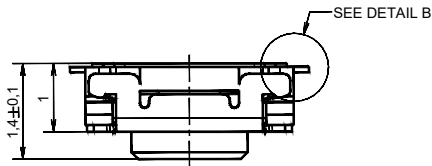
# RK Series Microminiature SMT Top Actuated Tact Switch

**NEW**

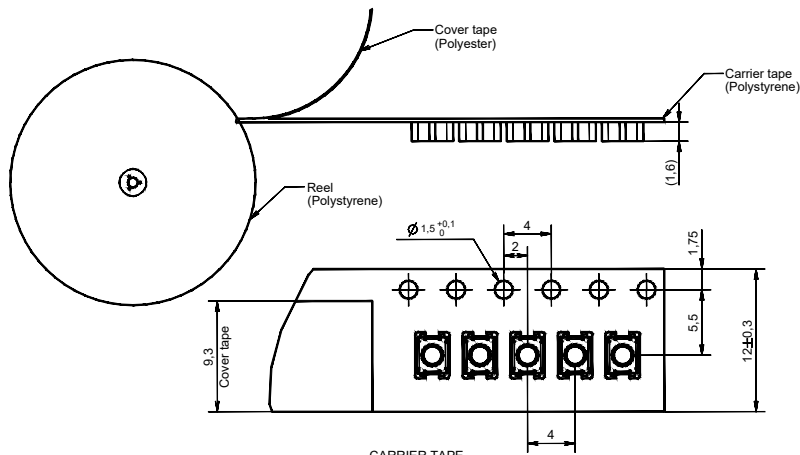
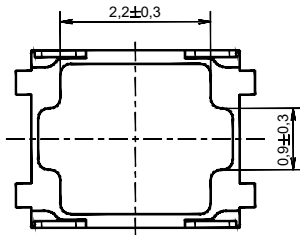
**RKC** 3.5 X 2.6 X 1.4 MM



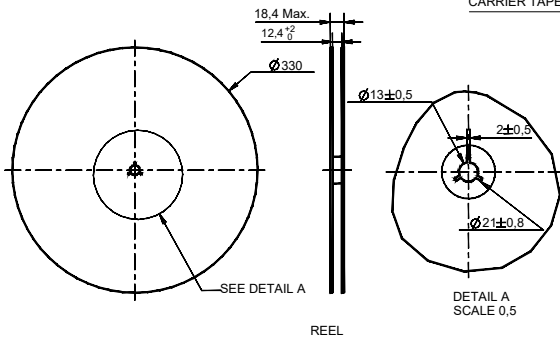
RECOMMENDED PCB LAYOUT



SCHEMATIC



CARRIER TAPE



REEL

DETAIL A  
SCALE 0,5

Tactile Switches

**B**