

CP

600V Cable Protectors

SPECIAL PURPOSE



SP

Mersen CP Cable Protectors are special purpose limiters which are crimped or bolted to cables or terminals to clear and isolate faults quickly, increasing the reliability of service entrance and distribution runs. CP Cable Protectors have a 200,000A interrupting rating, yet will carry low cable overloads which are handled by standard protective devices. Cable protectors are rated in terms of cable size and material (Al or Cu). Heavier duty CPH cable protectors are available on special order. Heat shrinkable (HS) tubing can be specified for field installation. TI blown fuse trigger indicators may be available upon request. Refer to the application information section for more information.

| Type | Description | Termination | Cable Size | Catalog # for Cable Type | |
|-----------|----------------------------|-------------|------------|--------------------------|----------|
| | | | | Copper | Aluminum |
| 1 | Cable to Cable | | 2 | CP2C1 | - |
| | | | 1/0 | CP1/OC1 | - |
| | | | 2/0 | CP2/OC1 | - |
| | | | 4/0 | CP4/OC1 | CP4/OA1 |
| | | | 250kcmil | CP250C1 | CP250A1 |
| | | | 350kcmil | CP350C1 | CP350A1 |
| | | | 400kcmil | CP400C1 | - |
| | | | 500kcmil | CP500C1 | CP500A1 |
| | | | 600kcmil | CP600C1 | CP600A1 |
| | | | 750kcmil | CP750C1 | CP750A1 |
| 1000kcmil | CP1000C1 | - | | | |
| 3 | Cable to Offset Bus | | 2 | CP2C3 | - |
| | | | 1/0 | CP1/OC3 | - |
| | | | 2/0 | CP2/OC3 | - |
| | | | 4/0 | CP4/OC3 | CP4/OA3 |
| | | | 250kcmil | CP250C3 | CP250A3 |
| | | | 350kcmil | CP350C3 | CP350A3 |
| | | | 400kcmil | CP400C3 | - |
| | | | 500kcmil | CP500C3 | CP500A3 |
| | | | 600kcmil | CP600C3 | CP600A3 |
| | | | 750kcmil | CP750C3 | CP750A3 |
| 1000kcmil | CP1000C3 | - | | | |
| 5 | Straight Bus to Offset Bus | | 2/0 | CP2/OC5 | CP2/OC5 |
| | | | 4/0 | CP4/OC5 | CP4/OC5 |
| | | | 250kcmil | CP250C5 | CP250C5 |
| | | | 350kcmil | CP350C5 | CP350C5 |
| | | | 500kcmil | CP500C5 | CP500C5 |
| | | | 600kcmil | CP600C5 | CP600C5 |
| 6 | Mole to Cable | | 4/0 | CP4/OC6 | CP4/OA6 |
| | | | 250kcmil | CP250C6 | CP250A6 |
| | | | 350kcmil | CP350C6 | CP350A6 |
| | | | 400kcmil | CP400C6 | - |
| | | | 500kcmil | CP500C6 | CP500A6 |
| 8 | Mole to Offset Bus | | 4/0 | CP4/OC8 | CP4/OC8 |
| | | | 250kcmil | CP250C8 | CP250C8 |
| | | | 350kcmil | CP350C8 | CP350C8 |
| | | | 500kcmil | CP500C8 | CP500C8 |
| | | | 750kcmil | CP750C8 | CP750C8 |

*Please consult factory for special terminations.

RATINGS:

- **Sizes:** #2 to 1000kcmil aluminum or copper
- **Volts:** 600VAC
- **IR:** 200kA I.R. AC

FEATURES/BENEFITS:

- Fiberglass bodies for dimensional stability in harsh environments
- Catalog number stamped into terminal for permanent identification
- Crimp terminals for aluminum cable include oxide inhibitor
- Molded rubber boots or heat shrinkable tubing available for insulation and protection
- Current limiting device
- Permitted by National Electrical Code®

APPROVALS:

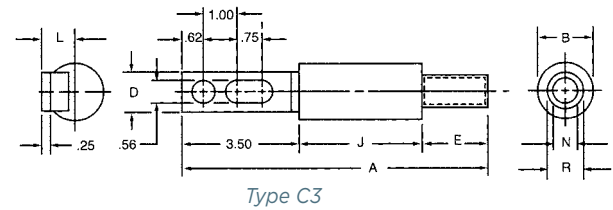
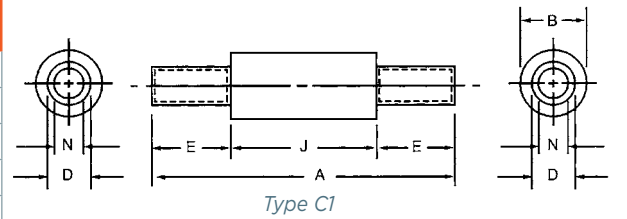


- UL listed to File E305297

| Catalog Numbering System | |
|------------------------------------|-----------------|
| | CP 500 C 3 - TI |
| Standard Duty | CP |
| Heavy Duty | CPH |
| Conductor Size | 500 |
| Cable Material: Copper or Aluminum | C A |
| Termination | 3 |
| Heat Shrink Trigger Indicator | HS TI |

TYPE C1 - DIMENSIONS (CABLE TO CABLE - COPPER)

| Catalog No. | Cable* Size | Dimensions - Inches (mm) | | | | | |
|-------------|-------------|--------------------------|-----------|-----------|-----------|-----------|-----------|
| | | A | B | D | E | J | N |
| CP2C1 | #2 | .712 [180] | 1.44 [37] | .42 [11] | 1.75 [44] | 3.62 [92] | .31 [7.9] |
| CP1/OC1 | 1/0 | .712 [180] | 1.44 [37] | .52 [13] | 1.75 [44] | 3.62 [92] | .39 [9.9] |
| CP2/OC1 | 2/0 | .712 [180] | 1.44 [37] | .56 [14] | 1.75 [44] | 3.62 [92] | .44 [11] |
| CP4/OC1 | 4/0 | .712 [180] | 1.44 [37] | .68 [17] | 1.75 [44] | 3.62 [92] | .55 [14] |
| CP250C1 | 250kcmil | 7.38 [188] | 1.44 [37] | .75 [19] | 1.88 [48] | 3.62 [92] | .62 [16] |
| CP350C1 | 350kcmil | 7.62 [194] | 1.62 [41] | .88 [22] | 2.00 [51] | 3.62 [92] | .71 [18] |
| CP400C1 | 400kcmil | 7.62 [194] | 1.62 [41] | .94 [24] | 2.00 [51] | 3.62 [92] | .75 [19] |
| CP500C1 | 500kcmil | 9.38 [238] | 1.88 [48] | 1.05 [27] | 2.88 [73] | 3.62 [92] | .85 [22] |
| CP600C1 | 600kcmil | 9.51 [242] | 2.50 [64] | 1.07 [27] | 2.88 [73] | 3.75 [95] | .94 [24] |
| CP750C1 | 750kcmil | 9.51 [242] | 2.50 [64] | 1.32 [34] | 2.88 [73] | 3.75 [95] | 1.06 [27] |
| CP1000C1 | 1000kcmil | 10.00 [254] | 3.00 [76] | 1.50 [38] | 3.13 [79] | 3.75 [95] | 1.16 [29] |

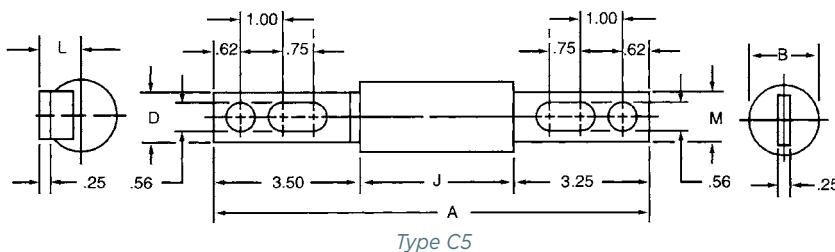


TYPE C3 - DIMENSIONS (CABLE TO OFFSET BUS - COPPER)

| Catalog No. | Cable* Size | Dimensions - Inches (mm) | | | | | | | | | |
|-------------|-------------|--------------------------|-----------|-----------|-----------|-------------|-----------|-----------|-----------|-----------|--|
| | | A | B | D | E | I | J | L | N | R | |
| CP2C3 | #2 | 8.87 [225] | 1.44 [37] | 1.12 [28] | 1.75 [44] | 3.50 [88.9] | 3.62 [92] | .96 [24] | .31 [7.9] | .42 [11] | |
| CP1/OC3 | 1/0 | 8.87 [225] | 1.44 [37] | 1.12 [28] | 1.75 [44] | 3.50 [88.9] | 3.62 [92] | .96 [24] | .39 [9.9] | .52 [13] | |
| CP2/OC3 | 2/0 | 8.87 [225] | 1.44 [37] | 1.12 [28] | 1.75 [44] | 3.50 [88.9] | 3.62 [92] | .96 [24] | .44 [11] | .56 [14] | |
| CP4/OC3 | 4/0 | 8.87 [225] | 1.44 [37] | 1.12 [28] | 1.75 [44] | 3.50 [88.9] | 3.62 [92] | .96 [24] | .55 [14] | .68 [17] | |
| CP250C3 | 250kcmil | 9.00 [229] | 1.44 [37] | 1.12 [28] | 1.88 [48] | 3.50 [88.9] | 3.62 [92] | .96 [24] | .62 [16] | .75 [19] | |
| CP350C3 | 350kcmil | 9.12 [232] | 1.62 [41] | 1.12 [28] | 2.00 [51] | 3.50 [88.9] | 3.62 [92] | .96 [24] | .71 [18] | .88 [22] | |
| CP400C3 | 400kcmil | 9.12 [232] | 1.62 [41] | 1.12 [28] | 2.00 [51] | 3.50 [88.9] | 3.62 [92] | .96 [24] | .75 [19] | .88 [22] | |
| CP500C3 | 500kcmil | 10.00 [254] | 1.88 [48] | 1.62 [41] | 2.88 [73] | 3.50 [88.9] | 3.62 [92] | 1.19 [30] | .85 [22] | 1.05 [27] | |
| CP600C3 | 600kcmil | 10.13 [257] | 2.50 [64] | 2.00 [51] | 2.88 [73] | 3.50 [88.9] | 3.75 [95] | 1.31 [33] | .94 [24] | 1.07 [27] | |
| CP750C3 | 750kcmil | 10.13 [257] | 2.50 [64] | 2.00 [51] | 2.88 [73] | 3.50 [88.9] | 3.75 [95] | 1.31 [33] | 1.06 [27] | 1.32 [34] | |
| CP1000C3 | 1000kcmil | 10.63 [270] | 3.00 [76] | 2.00 [51] | 3.13 [79] | 3.75 [95] | 3.75 [95] | 1.56 [40] | 1.16 [29] | 1.50 [38] | |

TYPE C5 - DIMENSIONS (STRAIGHT BUS TO OFFSET BUS - COPPER)

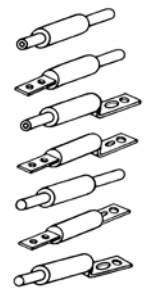
| Catalog No. | Cable Size | Dimensions - Inches (mm) | | | | | |
|-------------|------------|--------------------------|-----------|-----------|-----------|-----------|-----------|
| | | A | B | D | J | L | M |
| CP4/OC5 | 4/0 | 10.37 [263] | 1.44 [37] | 1.12 [28] | 3.62 [92] | .96 [24] | 1.12 [28] |
| CP250C5 | 250kcmil | 10.37 [263] | 1.44 [37] | 1.12 [28] | 3.62 [92] | .96 [24] | 1.12 [28] |
| CP350C5 | 350kcmil | 10.37 [263] | 1.62 [41] | 1.12 [28] | 3.62 [92] | .96 [24] | 1.12 [28] |
| CP400C5 | 400kcmil | 10.37 [263] | 1.62 [41] | 1.12 [28] | 3.62 [92] | .96 [24] | 1.12 [28] |
| CP500C5 | 500kcmil | 10.37 [263] | 1.88 [48] | 1.62 [41] | 3.62 [92] | 1.19 [30] | 1.50 [38] |
| CP600C5 | 600kcmil | 10.50 [267] | 2.50 [64] | 2.00 [51] | 3.75 [95] | 1.31 [33] | 2.00 [51] |
| CP750C5 | 750kcmil | 10.50 [267] | 2.50 [64] | 2.00 [51] | 3.75 [95] | 1.31 [33] | 2.00 [51] |



* kcmil = MCM

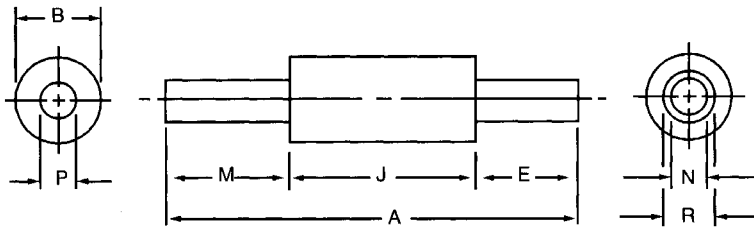
CABLE TYPE

- TYPE 1—Cable to cable
- TYPE 2—Bus to cable
- TYPE 3—Cable to offset bus
- TYPE 5—Bus to offset bus
- TYPE 6—Mole to cable
- TYPE 7—Bus to bus
- TYPE 8—Mole to offset bus



TYPE C6 - DIMENSIONS (MOLE TO CABLE - COPPER)

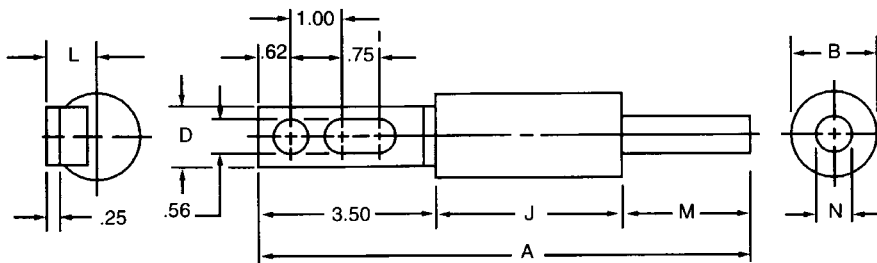
| Catalog No. | Cable* Size | Dimensions - Inches (mm) | | | | | | | |
|-------------|-------------|--------------------------|-----------|-----------|-----------|-----------|-----------|-----------|-----------|
| | | A | B | E | J | M | N | P | R |
| CP4/OC6 | 4/0 | 7.87 (200) | 1.44 (37) | 1.75 (44) | 3.62 (92) | 2.50 (64) | .55 (14) | .52 (13) | .68 (17) |
| CP250C6 | 250kcmil | 8.00 (203) | 1.44 (37) | 1.88 (48) | 3.62 (92) | 2.50 (64) | .62 (16) | .58 (14) | .75 (19) |
| CP350C6 | 350kcmil | 8.12 (206) | 1.62 (41) | 2.00 (51) | 3.62 (92) | 2.50 (64) | .71 (18) | .68 (17) | .88 (22) |
| CP500C6 | 500kcmil | 9.38 (238) | 1.88 (48) | 2.88 (73) | 3.62 (92) | 2.88 (73) | .85 (22) | .81 (21) | 1.05 (27) |
| CP750C6 | 750kcmil | 9.51 (427) | 2.50 (64) | 2.88 (73) | 3.75 (95) | 2.88 (73) | 1.06 (27) | 1.00 (25) | 1.32 (34) |



Type C6

TYPE C8 - DIMENSIONS (MOLE TO OFFSET BUS - COPPER)

| Catalog No. | Cable* Size | Dimensions - Inches (mm) | | | | | | |
|-------------|-------------|--------------------------|-----------|-----------|-----------|-----------|-----------|-----------|
| | | A | B | D | J | L | M | N |
| CP4/OC8 | 4/0 | 9.62 (244) | 1.44 (37) | 1.12 (28) | 3.62 (92) | .96 (24) | 2.50 (64) | .52 (14) |
| CP250C8 | 250kcmil | 9.62 (244) | 1.44 (37) | 1.12 (28) | 3.62 (92) | .96 (24) | 2.50 (64) | .58 (13) |
| CP350C8 | 350kcmil | 9.62 (244) | 1.62 (41) | 1.12 (28) | 3.62 (92) | .96 (24) | 2.50 (64) | .68 (17) |
| CP500C8 | 500kcmil | 10.00 (254) | 1.88 (48) | 1.62 (41) | 3.62 (92) | 1.19 (30) | 2.88 (73) | .81 (21) |
| CP750C8 | 750kcmil | 10.13 (257) | 2.50 (64) | 2.00 (51) | 3.75 (95) | 1.31 (33) | 2.88 (73) | 1.00 (25) |

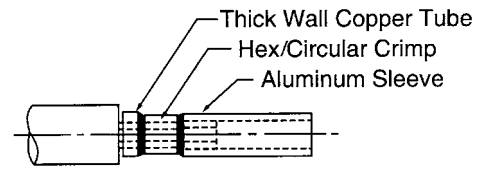
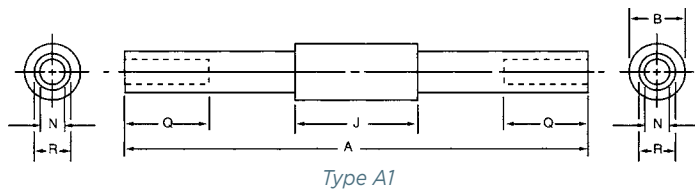


Type C8

* kcmil = MCM

TYPE A1 - DIMENSIONS (CABLE TO CABLE - ALUMINUM)

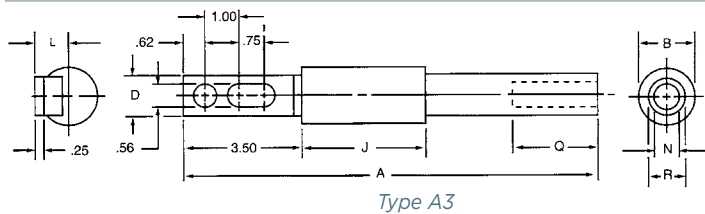
| Catalog No. | Cable* Size | Dimensions - Inches (mm) | | | | | |
|-------------|-------------|--------------------------|-----------|-----------|-----------|-----------|-----------|
| | | A | B | J | N | Q | R |
| CP4/OA1 | 4/0 | 13.88 [353] | 1.44 [37] | 3.62 [92] | .55 [14] | 2.50 [64] | .85 [22] |
| CP250A1 | 250kcmil | 13.88 [353] | 1.44 [37] | 3.62 [92] | .59 [15] | 2.50 [64] | .94 [24] |
| CP350A1 | 350kcmil | 13.88 [353] | 1.62 [41] | 3.62 [92] | .71 [18] | 2.50 [64] | 1.13 [29] |
| CP500A1 | 500kcmil | 15.38 [391] | 1.88 [48] | 3.62 [92] | .85 [22] | 2.88 [73] | 1.33 [34] |
| CP750A1 | 750kcmil | 15.50 [394] | 2.50 [64] | 3.75 [95] | 1.06 [27] | 2.88 [73] | 1.62 [41] |



Typical Terminal Assembly Details

TYPE A3 - DIMENSIONS (CABLE TO OFFSET BUS - ALUMINUM)

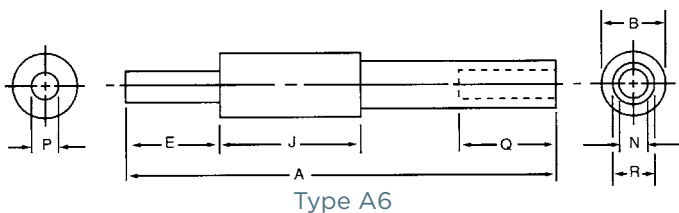
| Catalog No. | Cable* Size | Dimensions - Inches (mm) | | | | | | | |
|-------------|-------------|--------------------------|-----------|-----------|-----------|-----------|-----------|-----------|-----------|
| | | A | B | D | J | L | N | Q | R |
| CP4/OA3 | 4/0 | 12.25 [311] | 1.44 [37] | 1.12 [28] | 3.62 [92] | .96 [24] | .55 [14] | 2.50 [64] | .85 [22] |
| CP250A3 | 250kcmil | 12.25 [311] | 1.44 [37] | 1.12 [28] | 3.62 [92] | .96 [24] | .59 [15] | 2.50 [64] | .94 [24] |
| CP350A3 | 350kcmil | 12.25 [311] | 1.62 [41] | 1.12 [28] | 3.62 [92] | .96 [24] | .71 [18] | 2.50 [64] | 1.13 [29] |
| CP500A3 | 500kcmil | 13.00 [330] | 1.88 [48] | 1.62 [41] | 3.62 [92] | 1.19 [30] | .85 [22] | 2.88 [73] | 1.33 [34] |
| CP750A3 | 750kcmil | 13.12 [333] | 2.50 [64] | 2.00 [51] | 3.75 [95] | 1.31 [33] | 1.06 [27] | 2.88 [73] | 1.62 [41] |



Type A3

TYPE A6 - DIMENSIONS (MOLE TO CABLE - ALUMINUM)

| Catalog Number | Cable* Size | Dimensions - Inches (mm) | | | | | | | |
|----------------|-------------|--------------------------|-----------|-----------|-----------|-----------|-----------|-----------|-----------|
| | | A | B | E | J | N | P | Q | R |
| CP4/OA6 | 4/0 | 11.25 [286] | 1.44 [37] | 2.50 [64] | 3.62 [92] | .55 [14] | .52 [13] | 2.50 [64] | .85 [22] |
| CP250A6 | 250kcmil | 11.25 [286] | 1.44 [37] | 2.50 [64] | 3.62 [92] | .59 [15] | .58 [14] | 2.50 [64] | .94 [24] |
| CP350A6 | 350kcmil | 11.25 [286] | 1.62 [41] | 2.50 [64] | 3.62 [92] | .71 [18] | .68 [17] | 2.50 [64] | 1.13 [29] |
| CP500A6 | 500kcmil | 12.38 [314] | 1.88 [48] | 2.88 [73] | 3.62 [92] | .85 [22] | .81 [21] | 2.88 [73] | 1.33 [34] |
| CP750A6 | 750kcmil | 12.50 [318] | 2.50 [64] | 2.88 [73] | 3.75 [95] | 1.06 [27] | 1.00 [25] | 2.88 [73] | 1.59 [41] |



Type A6

Type 5 - Use Copper Cable Protectors Type C5

Type 8 - Use Copper Cable Protectors Type C8

* kcmil = MCM

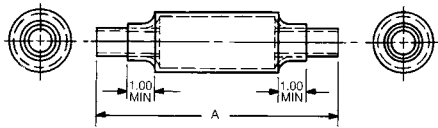
Note: Inside surface of sleeve ends is coated with oxide inhibitor and capped.

SP

COPPER CABLE PROTECTORS WITH HEAT SHRINKABLE TUBING*

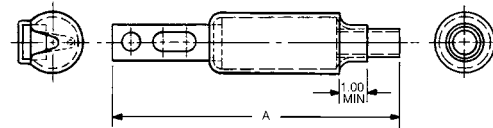
TYPE C1, COPPER CABLE -
DIMENSIONS

| Cable Size | Inches | A (mm) | Catalog No. Cable Protector With Heat Shrinkable Tubing |
|------------|--------|--------|---|
| 4/0 | 7.12 | (180) | CP4/0C1-HS |
| 250kcmil | 7.38 | (188) | CP250C1-HS |
| 350kcmil | 7.62 | (194) | CP350C1-HS |
| 500kcmil | 9.38 | (238) | CP500C1-HS |
| 750kcmil | 9.51 | (242) | CP750C1-HS |



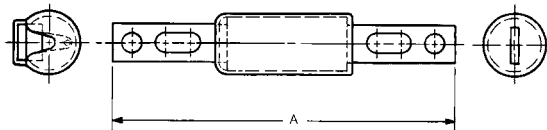
TYPE C3, COPPER CABLE -
DIMENSIONS

| Cable Size | Inches | A (mm) | Catalog No. Cable Protector With Heat Shrinkable Tubing |
|------------|--------|--------|---|
| 4/0 | 8.87 | (225) | CP4/0C3-HS |
| 250kcmil | 9.00 | (229) | CP250C3-HS |
| 350kcmil | 9.12 | (232) | CP350C3-HS |
| 500kcmil | 10.00 | (254) | CP500C3-HS |
| 750kcmil | 10.13 | (257) | CP750C3-HS |



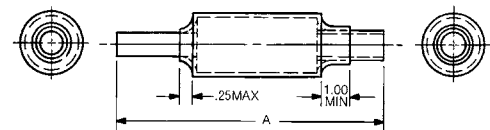
TYPE C5, COPPER CABLE -
DIMENSIONS

| Cable Size | Inches | A (mm) | Catalog No. Cable Protector With Heat Shrinkable Tubing |
|------------|--------|--------|---|
| 4/0 | 10.37 | (263) | CP4/0C5-HS |
| 250kcmil | 10.37 | (263) | CP250C5-HS |
| 350kcmil | 10.37 | (263) | CP350C5-HS |
| 500kcmil | 10.37 | (263) | CP500C5-HS |
| 750kcmil | 10.50 | (267) | CP750C5-HS |



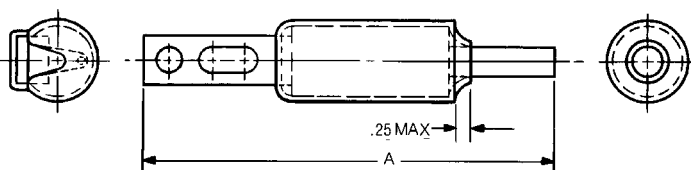
TYPE C6, COPPER CABLE -
DIMENSIONS

| Cable Size | Inches | A (mm) | Catalog No. Cable Protector With Heat Shrinkable Tubing |
|------------|--------|--------|---|
| 4/0 | 7.87 | (200) | CP4/0C6-HS |
| 250kcmil | 8.00 | (203) | CP250C6-HS |
| 350kcmil | 8.12 | (206) | CP350C6-HS |
| 500kcmil | 9.38 | (238) | CP500C6-HS |
| 750kcmil | 9.51 | (242) | CP750C6-HS |



TYPE C8, COPPER CABLE -
DIMENSIONS

| Cable Size | Inches | A (mm) | Catalog No. Cable Protector With Heat Shrinkable Tubing |
|------------|--------|--------|---|
| 4/0 | 9.62 | (244) | CP4/0C8-HS |
| 250kcmil | 9.62 | (244) | CP250C8-HS |
| 350kcmil | 9.62 | (244) | CP350C8-HS |
| 500kcmil | 10.00 | (254) | CP500C8-HS |
| 750kcmil | 10.13 | (257) | CP750C8-HS |

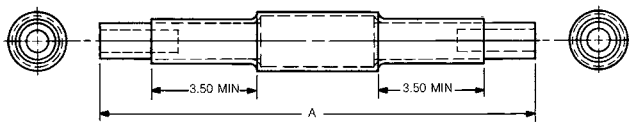


* Transparent heat shrinkable tubing is supplied separately with -HS Catalog No. Maximum curing conditions: 5 seconds at 450°F.

ALUMINUM CABLE PROTECTORS WITH HEAT SHRINKABLE TUBING*

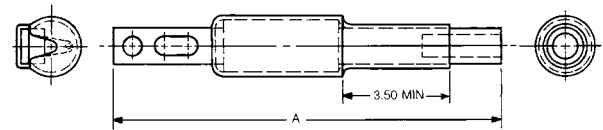
TYPE A1, ALUMINUM CABLE - DIMENSIONS

| Cable Size | Inches | A (mm) | Catalog No. Cable Protector With Heat Shrinkable Tubing |
|------------|--------|--------|---|
| 4/0 | 13.88 | [353] | CP4/0A1-HS |
| 250kcmil | 13.88 | [353] | CP250A1-HS |
| 350kcmil | 13.88 | [353] | CP350A1-HS |
| 500kcmil | 15.38 | [391] | CP500A1-HS |
| 750kcmil | 15.50 | [394] | CP750A1-HS |



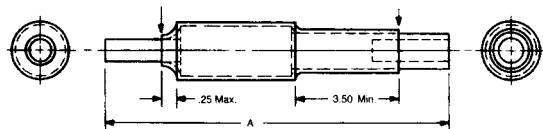
TYPE A3, ALUMINUM CABLE - DIMENSIONS

| Cable Size | Inches | A (mm) | Catalog No. Cable Protector With Heat Shrinkable Tubing |
|------------|--------|--------|---|
| 250kcmil | 12.25 | [311] | CP250A3-HS |
| 350kcmil | 12.25 | [311] | CP350A3-HS |
| 4/0 | 12.25 | [311] | CP4/0A3-HS |
| 500kcmil | 13.00 | [330] | CP500A3-HS |
| 750kcmil | 13.12 | [333] | CP750A3-HS |



TYPE A6, ALUMINUM CABLE - DIMENSIONS

| Cable Size | Inches | A (mm) | Catalog No. Cable Protector With Heat Shrinkable Tubing |
|------------|--------|--------|---|
| 4/0 | 11.25 | [286] | CP4/0A6-HS |
| 250kcmil | 11.25 | [286] | CP250A6-HS |
| 350kcmil | 11.25 | [286] | CP350A6-HS |
| 500kcmil | 12.38 | [314] | CP500A6-HS |
| 750kcmil | 12.50 | [318] | CP750A6-HS |



Type 5 - Use Copper Cable Protectors Type C5

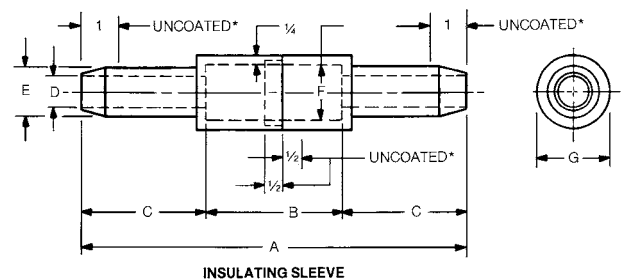
Type 8 - Use Copper Cable Protectors Type C8

* Transparent heat shrinkable tubing is supplied separately with -HS Catalog Numbers. Maximum curing conditions: 5 seconds at 450 °F.

MOLDED RUBBER INSULATING SLEEVES**

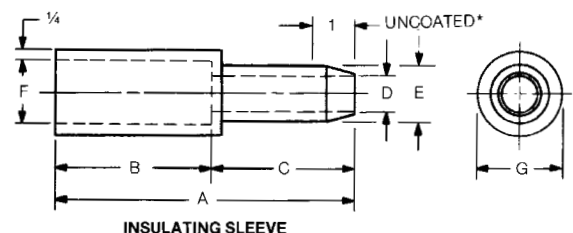
FOR TYPE C1 COPPER CABLE PROTECTORS - DIMENSIONS

| Catalog No. | Cable Size | Dimensions - Inches (mm) | | | | | | |
|-------------|------------|--------------------------|------|-------|------|------|------|------|
| | | A | B | C | D | E | F | G |
| 4/0CCR | 4/0 | 10.44 | 3.69 | 3.38 | .83 | 1.33 | 1.50 | 2.00 |
| | | (265) | (94) | (86) | (21) | (33) | (38) | (51) |
| 500CCR | 500kcmil | 14.19 | 3.69 | 5.25 | 1.31 | 1.81 | 1.94 | 2.44 |
| | | (360) | (94) | (133) | (33) | (46) | (49) | (62) |



FOR TYPE C3 COPPER CABLE PROTECTORS - DIMENSIONS

| Catalog No. | Cable Size | Dimensions - Inches (mm) | | | | | | |
|-------------|------------|--------------------------|------|-------|------|------|------|------|
| | | A | B | C | D | E | F | G |
| 4/0C3BR | 4/0 | 7.06 | 3.69 | 3.38 | .83 | 1.33 | 1.50 | 2.00 |
| | | (179) | (94) | (86) | (21) | (33) | (38) | (51) |
| 500C3BR | 500kcmil | 8.94 | 3.69 | 5.25 | 1.31 | 1.81 | 1.94 | 2.44 |
| | | (227) | (94) | (133) | (33) | (46) | (49) | (62) |



** Molded rubber insulating sleeves are ordered by their own catalog numbers, and not as suffixes to the cable protector catalog numbers. Neoprene coated except as noted.

SP

Mersen Cable Protectors have standard commercial splicing sleeve dimensions. Any crimping tool suitable for standard splicing sleeves, can be used. Follow crimping tool manufacturers instructions. Some crimping tool examples are shown below. It is recommended to use at least 2 crimps.

CABLE PROTECTOR SPLICING SLEVE DIMENSIONS

| Cable Size (MCM or kcmil) | Copper | | Aluminum | |
|---------------------------|--------------|--------------|-------------|-------------|
| | ID | OD | ID | OD |
| #2 | 0.31 (7.87) | 0.42 (10.69) | - | - |
| 1/0 | 0.39 (9.91) | 0.52 (13.21) | - | - |
| 2/0 | 0.44 (11.18) | 0.56 (14.22) | - | - |
| 4/0 | 0.55 (13.97) | 0.68 (17.27) | 0.54 (13.8) | 0.84 (21.5) |
| 250 | 0.62 (15.75) | 0.75 (19.05) | 0.59 (15.1) | 0.94 (23.7) |
| 350 | 0.71 (18.03) | 0.88 (22.35) | 0.71 (18.0) | 1.13 (28.7) |
| 400 | 0.75 (19.05) | 0.94 (23.88) | - | - |
| 500 | 0.82 (20.83) | 1.05 (26.67) | 0.84 (21.2) | 1.31 (33.3) |
| 600 | 0.94 (23.88) | 1.07 (27.18) | 0.92 (23.4) | 1.44 (36.6) |
| 750 | 1.06 (26.92) | 1.32 (33.53) | 1.03 (26.2) | 1.59 (40.4) |
| 1000 | 1.16 (29.46) | 1.50 (38.1) | - | - |

PANDUIT - COPPER

| Cable Size (MCM or kcmil) | CT-920, CT-920CH, CT-930, CT-930CH, CT-2920 | |
|---------------------------|---|---------------------|
| | Die | Die Color & Die No. |
| #2 | CD-920-2 | Brown P33 |
| 1/0 | CD-920-1/0 | Pink P42 |
| 2/0 | CD-920-2/0 | Black P45 |
| 4/0 | CD-920-4/0 | Purple P54 |
| 250 | CD-920-250* | Yellow P62 |
| 350 | CD-920-350 | Red P71 |
| 400 | CD-920-400 | Blue P76 |
| 500 | CD-920-500 | Brown P87 |
| 600 | CD-920-600 | Green P94 |
| 750 | CD-920-750 | Black P106 |

* Copper Tap Connector Part Nos: HTCT250-8, HTCT250-2, HTCT250-250

* Tap Connector Die Part No: CD-930H-250

PANDUIT - ALUMINUM

| Cable Size (MCM or kcmil) | CT-920, CT-920CH, CT-930, CT-930CH, CT-2920 | |
|---------------------------|---|-----------------------|
| | Die | Die Color & Die No. |
| #2 | CD-920-1/0 | Pink P42 |
| 1/0 | CD-920-3/0** | Tan P50 (Orange P50) |
| 2/0 | CD-920-4/0 | Olive P54 (Purple 54) |
| 4/0 | CD-920-300 | White P66 |
| 250 | CD-920-350 | Red P71 |
| 350 | CD-920-500 | Brown P87 |
| 400 | CD-920-600 | Green P94 |
| 500 | CD-920-500A | Pink P99 |
| 600 | CD-920-750 | Black P106 |
| 750 | - | - |

** Aluminum Tap Connector Part No: HTAP2-8-L (PANDUIT Die Color & Die No)

Note: Crimp Tools CT 2940 and CT940H may be used with adapter CD-940-DA

THOMAS & BETTS - COPPER

| Cable Size (MCM or kcmil) | 13642M (13400) Hydraulic Head | | TBM14 (14 TON) Head | | TBM15 (15 TON) Head | | Head | |
|---------------------------|-------------------------------|----------|---------------------|----------|---------------------|----------|-------------|----------|
| | Die Cat No. | Die Code | Die Cat No. | Die Code | Die Cat No. | Die Code | Die Cat No. | Die Code |
| #2 | 11735 | 33 | 15528 | 33 | 15528 | 33 | 11402 | 33 |
| 1/0 | 11737 | 42 | 15508 | 42 | 15508 | 42 | 11334 | 42 |
| 2/0 | 11738 | 45 | 15526 | 45 | 15526 | 45 | 11405 | 45 |
| 4/0 | 11740 | 54 | 15511 | 54 | 15511 | 54H | 11407 | 54H |
| 250 | 11771 | 62 | 15510-CK | 62 | 15510-CK | 62 | 297-31669-7 | 62 |
| 350 | 11743 | 71H | 15514-CK | 71H | 15514-CK | 71H | 11363 | 71 |
| 400 | 11744 | 76H | 15512 | 76H | 15512 | 76H | 11410 | 76 |
| 500 | 11746-TB | 87H | 15506 | 87H | 15506 | 87H | 11423 | 87 |
| 600 | 11748 | 99H | 15536-CK | 94H | 15536-CK | 94H | 11364 | 94 |
| 750 | - | - | 15515-CK | 106H | 15515-CK | 106H | 74506 | 106 |
| 1000 | - | - | - | - | 15603 | 125H | 11416 | 125 |

THOMAS & BETTS - ALUMINUM

| Cable Size (MCM or kcmil) | 13642M (13400) Hydraulic Head | | TBM14 Head | | TBM15 Head | | 21940 (40 TON) Head | |
|---------------------------|-------------------------------|----------|-------------|----------|-------------|----------|---------------------|----------|
| | Die Cat No. | Die Code | Die Cat No. | Die Code | Die Cat No. | Die Code | Die Cat No. | Die Code |
| 4/0 | 11742 | 66H | 15534 | 66H | 15534 | 66H | 11409 | 66 |
| 250 | 11744 | 76H | 15512 | 76H | 15512 | 76H | 11410 | 76 |
| 350 | 11747 | 94H | 15536-CK | 94H | 15536-CK | 94H | 11364 | 94 |
| 400 | - | - | - | - | - | - | - | - |
| 500 | 11749 | 106H | 15515-CK | 106H | 15515-CK | 106H | 74506 | 106 |
| 600 | 11751 | 112H | 15504 | 115H | 15609 | 112H | 11426 | 112 |
| 750 | - | - | - | - | 15602 | 140H | 11418 | 140 |

BURNDY - COPPER

| Cable Size (MCM or kcmil) | Burndy Hypress and Die Set | | | |
|---------------------------|----------------------------|-------|-------|---------|
| | Y35 | Y39 | Y750 | Y46* |
| #2 | U2CRT | U2CRT | U2CRT | U2CRT |
| 1/0 | U25RT | U25RT | U25RT | U25RT |
| 2/0 | U26RT | U26RT | U26RT | U26RT |
| 4/0 | U28RT | U28RT | U28RT | U28RT |
| 250 | U29RT | U29RT | U29RT | U29RT |
| 350 | U31RT | U31RT | U31RT | U31RT |
| 400 | U32RT | U32RT | U32RT | U32RT |
| 500 | - | U34RT | U34RT | U34RT |
| 600 | - | U36RT | U36RT | U36RT |
| 750 | - | U39RT | U39RT | U39RT |
| 1000 | - | - | - | P44RT** |

* Requires PUADP-1 Adapter

** PUADP-1 Adapter not required

Note: Use Burndy Dies with IlSCO ILC-15H crimp tool by installing adapter part no ILD-PADP

BURNDY - ALUMINUM

| Cable Size (MCM or kcmil) | Burndy Hypress and Die Set | |
|---------------------------|----------------------------|----------|
| | Y35 | Y39 |
| #2 | - | - |
| 1/0 | - | - |
| 2/0 | U26ART | U26ART |
| 4/0 | U28ART | U28ART |
| 250 | U29ART | U29ART |
| 350 | U31ART | U31ART |
| 400 | U32ART | U32ART |
| 500 | - | U34ART |
| 600 | - | U36ART |
| 750 | - | U39ART-2 |
| 1000 | - | - |

* Requires PUADP-1 Adapter

** PUADP-1 Adapter not required

SP