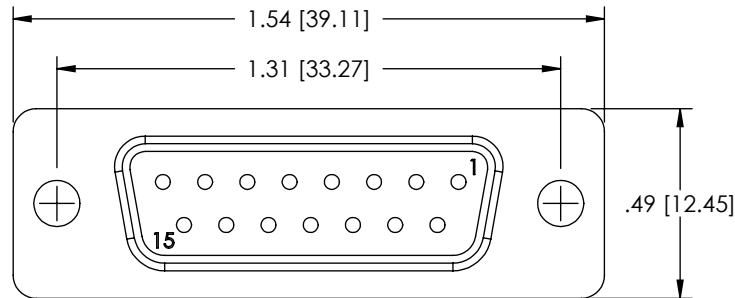
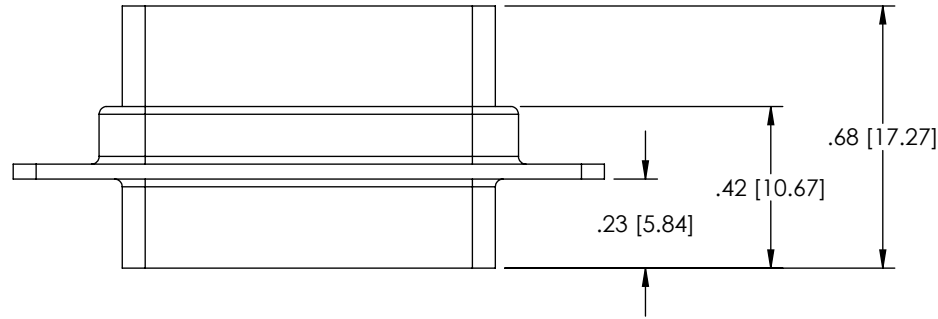


THE INFORMATION CONTAINED IN THIS DRAWING IS THE SOLE PROPERTY OF L-COM, INC. ANY REPRODUCTION IN PART OR WHOLE WITHOUT THE WRITTEN PERMISSION OF L-COM, INC. IS PROHIBITED.

REVISIONS			
REV	DESCRIPTION	DATE	APPROVED
A	INITIAL RELEASE	12/08/03	B.MAZEJKA
B	ECN 3196: UPDATE DWG FORMAT	2/14/08	D.GRIFFIN
C	ECN3680, ADDED PACKAGING TABLE	2008.10.30	E. STAUBLE
C	ECN99999: REMOVED PACKAGE IN POLYBAG NOTE	11/10/08	D.GRIFFIN



**NOTES:**

**MATERIAL:**

SHELL: STEEL

INSULATOR: PBT W/GLASS FIBER FILL (UL 94V-0 RATED)


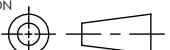
**FINISH:**

FRONT SHELL: BRIGHT TIN/NICKEL PLATED

REAR SHELL: BRIGHT TIN PLATED

CATALOG #	PACKAGING
C&P15F	1/BAG
C&P15F-TRAY	50/TRAY

**RoHS Compliant** ✓

UNLESS OTHERWISE SPECIFIED, DIMENSIONS ARE IN INCHES [mm]	APPROVALS	DATE	 45 BEECHWOOD DRIVE NORTH ANDOVER, MA 01845
	DRAWN BY B.MAZEJKA	11/10/2003	
OVERALL CABLE LENGTH TOLERANCE: $\leq 12$ [305] - $60$ [1524] = $+1$ [25] / -0 $> 60$ [1524] - $120$ [3048] = $+4$ [102] / -0 $> 120$ [3048] - $300$ [7620] = $+6$ [152] / -0 $> 300$ [7620] = $+5\%$ / -0%	CHECKED BY C.McCORMICK	12/08/2003	CATEGORY
	ALL OTHER DIMENSIONAL TOLERANCES: .X = .3 .XX = .15	APPROVED BY D.PARHAM	12/08/2003
PROJECTION 	CONFIGURATION DETAILS OF UNDIMENSIONED FEATURES MAY VARY	PRODUCT DESCRIPTION	DB15F CRIMP & POKE CONNECTOR
	COLOR VARIATIONS MAY OCCUR	SIZE <b>A</b>	FSCM NO. <b>43321</b>
	REF	DWG. NO. C&P15F	REV. <b>C</b>
		SCALE: NONE	CAD FILE: C&P15F.SLDDRW
			SHEET 1 OF 1