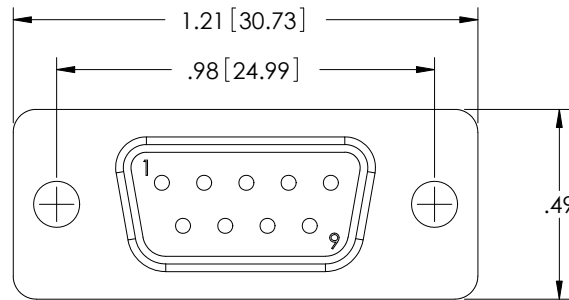
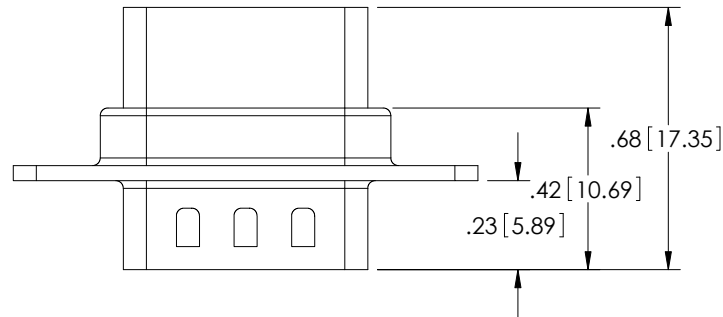


THE INFORMATION CONTAINED IN THIS DRAWING IS THE SOLE PROPERTY OF L-COM, INC. ANY REPRODUCTION IN PART OR WHOLE WITHOUT THE WRITTEN PERMISSION OF L-COM, INC. IS PROHIBITED.

RoHS Compliant ✓

REVISIONS			
REV	DESCRIPTION	DATE	APPROVED
A	INITIAL RELEASE	12/08/03	B.MAZEJKA
B	ECN# 2731 - ADDED ROHS STAMP	10/23/07	D.GRIFFIN
C	ECN#3680, ADDED PACKAGING TABLE & UPDATED FORMAT	2008.10.30	E. STAUBLE



NOTES:

MATERIAL:

SHELL: STEEL

INSULATOR: PBT W/ GLASS FIBER FILL (UL 94V-0 RATED)

FINISH:

FRONT SHELL: BRIGHT TIN/NICKEL PLATED

REAR SHELL: BRIGHT TIN PLATED

CATALOG #	PACKAGING
C&P9M	1/BAG
C&P9M-TRAY	50/TRAY

UNLESS OTHERWISE SPECIFIED, DIMENSIONS ARE IN INCHES [mm] OVERALL CABLE LENGTH TOLERANCE: ≤12 [305] = +1 [25] / -0 >12 [305] ≤60 [1524] = +2 [51] / -0 >60 [1524] ≤120 [3048] = +4 [102] / -0 >120 [3048] ≤300 [7620] = +6 [152] / -0 >300 [7620] = +5% / -0% ALL OTHER DIMENSIONAL TOLERANCES: .X = .3 .XX = .15 PROJECTION 	APPROVALS DRAWN BY B.MAZEJKA CHECKED BY C.McCORMICK APPROVED BY D.PARHAM	DATE 11/10/2003 12/08/2003 12/08/2003	 45 BEECHWOOD DRIVE NORTH ANDOVER, MA 01845
	CATEGORY DSUB		PRODUCT DESCRIPTION DB9M CRIMP & POKE CONNECTOR
	CONFIGURATION DETAILS OF UNDIMENSIONED FEATURES MAY VARY		
	COLOR VARIATIONS MAY OCCUR	SIZE A	FSCM NO. 43321
REF	SCALE: NONE	CAD FILE: C&P9M.SLDDRW	SHEET 1 OF 1