



Quality Products. Service Excellence.

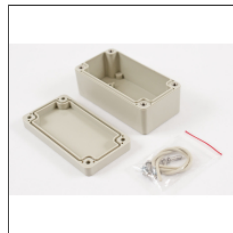
Water-Tight ABS & Polycarbonate Enclosures *RP Series*

Clear Lid and Bottom Flange Options



Key Features

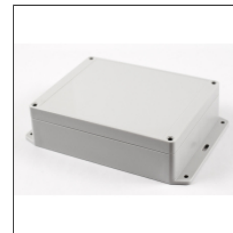
- Ideally suited for mounting printed circuit boards or components.
- Choice of two materials:
 - General purpose ABS with a flame rating of UL94-HB
 - Polycarbonate with a flame rating of UL94-V2
- Gasketed lid with two piece "tongue & groove" construction provides protection against access of oil, dust, and water.
- Rubber gasket is included and must be field installed.
- Lid includes smooth recessed area for membrane, label or silkscreen.
- Designed to meet IP 65.
- Lid is secured with self captivating M3.5 stainless steel machine screws (included), threaded into corrosion resistant bushings (for repetitive assembly & disassembly).
- Lid screws are self captivating (lid holes are threaded with the first installation of lid screws).
- Internal features are maximized for mounting options:
 - Internal DIN rail mounting tabs
 - PC board mounting posts
 - Options vary with size, please refer to drawings by clicking on the part numbers below.



Opaque Lid (ABS version shown)



Clear Lid (polycarbonate version shown)



Shown with integral bottom flange.



Some models supplied with deep lids.



Hardware includes lid screws, PC board screws, and gasket



Features corrosion resistant inserts for lid assembly



Internal mounting points for PC boards or panels



Internal DIN rail mounting point.

RP Series Without Bottom Flange

Light Gray ABS Plastic Light Gray ABS Plastic Off-White Polycarbonate Off-White Polycarbonate

Height

Optional Inner Panels

(Opaque Lid)	(Clear Lid)	(Opaque Lid)	(Clear Lid)	Length	Width	(Including Lid)	Height	Plastic	Aluminum
RP1015	RP1015C	RP1010	RP1010C	65	60	28	STC102	STA102	
RP1025	RP1025C	RP1020	RP1020C	65	60	40	STC102	STA102	
RP1055	RP1055C	RP1050	RP1050C	85	80	40	STC106	STA106	
RP1065	RP1065C	RP1060	RP1060C	85	80	55	STC106	STA106	
RP1035	RP1035C	RP1030	RP1030C	95	50	40	STC104	STA104	
RP1045	RP1045C	RP1040	RP1040C	95	50	50	STC104	STA104	
RP1085	RP1085C	RP1080	RP1080C	105	75	40	STC109	STA109	
RP1095	RP1095C	RP1090	RP1090C	105	75	55	STC109	STA109	
RP1125	RP1125C	RP1120	RP1120C	125	85	40	STC113	STA113	
RP1135	RP1135C	RP1130	RP1130C	125	85	55	STC113	STA113	
RP1145	RP1145C	RP1140	RP1140C	125	85	70	STC113	STA113	
RP1155	RP1155C	RP1150	RP1150C	125	85	85	STC113	STA113	
RP1205	RP1205C	RP1200	RP1200C	145	105	40	STC121	STA121	
RP1215	RP1215C	RP1210	RP1210C	145	105	60	STC121	STA121	
RP1165	RP1165C	RP1160	RP1160C	165	85	40	STC117	STA117	
RP1195	RP1195C	RP1190	RP1190C	165	85	70	STC117	STA117	
RP1175	RP1175C	RP1170	RP1170C	165	85	55	STC117	STA117	
RP1185	RP1185C	RP1180	RP1180C	165	85	85	STC117	STA117	
RP1235	RP1235C	RP1230	RP1230C	165	125	55	STC124	STA124	
RP1245	RP1245C	RP1240	RP1240C	165	125	75	STC124	STA124	
RP1275	RP1275C	RP1270	RP1270C	186	146	55	STC128	STA128	
RP1285	RP1285C	RP1280	RP1280C	186	146	75	STC128	STA128	
RP1375	RP1375C	RP1370	RP1370C	186	146	90	STC128	STA128	
RP1385	RP1385C	RP1380	RP1380C	186	146	110	STC128	STA128	
RP1455	RP1455C	RP1450	RP1450C	220	165	60	STC146	STA146	
RP1465	RP1465C	RP1460	RP1460C	220	165	85	STC146	STA146	
not available	RP1615C	RP1610	RP1610C	250	200	95	STC580	STA580	
not available	RP1635C	RP1630	RP1630C	250	200	130	STC580	STA580	

RP Series With Bottom Flange

Light Gray ABS Plastic Opaque Lid w/ Bottom Flange	Light Gray ABS Plastic Clear Lid w/ Bottom Flange	Off White Polycarbonate Opaque Lid w/ Bottom Flange	Off-White Polycarbonate Clear Lid w/ Bottom Flange	Length	Width	Height (Including Lid)	Optional Inner Panels Plastic	Aluminum
RP1025BF	RP1025BFC	RP1020BF	RP1020BFC	65	60	40	STC102	STA102
RP1055BF	RP1055BFC	RP1050BF	RP1050BFC	85	80	40	STC106	STA106
RP1065BF	RP1065BFC	RP1060BF	RP1060BFC	85	80	55	STC106	STA106
RP1035BF	RP1035BFC	RP1030BF	RP1030BFC	95	50	40	STC104	STA104
RP1045BF	RP1045BFC	RP1040BF	RP1040BFC	95	50	50	STC104	STA104
RP1085BF	RP1085BFC	RP1080BF	RP1080BFC	105	75	40	STC109	STA109
RP1095BF	RP1095BFC	RP1090BF	RP1090BFC	105	75	55	STC109	STA109
RP1125BF	RP1125BFC	RP1120BF	RP1120BFC	125	85	40	STC113	STA113
RP1135BF	RP1135BFC	RP1130BF	RP1130BFC	125	85	55	STC113	STA113
RP1145BF	RP1145BFC	RP1140BF	RP1140BFC	125	85	70	STC113	STA113
RP1155BF	RP1155BFC	RP1150BF	RP1150BFC	125	85	85	STC113	STA113
RP1205BF	RP1205BFC	RP1200BF	RP1200BFC	145	105	40	STC121	STA121
RP1215BF	RP1215BFC	RP1210BF	RP1210BFC	145	105	60	STC121	STA121
RP1165BF	RP1165BFC	RP1160BF	RP1160BFC	165	85	40	STC117	STA117
RP1195BF	RP1195BFC	RP1190BF	RP1190BFC	165	85	70	STC117	STA117
RP1175BF	RP1175BFC	RP1170BF	RP1170BFC	165	85	55	STC117	STA117
RP1185BF	RP1185BFC	RP1180BF	RP1180BFC	165	85	85	STC117	STA117
RP1235BF	RP1235BFC	RP1230BF	RP1230BFC	165	125	55	STC124	STA124
RP1245BF	RP1245BFC	RP1240BF	RP1240BFC	165	125	75	STC124	STA124
RP1275BF	RP1275BFC	RP1270BF	RP1270BFC	186	146	55	STC128	STA128

Light Gray ABS Plastic Opaque Lid w/ Bottom Flange	Light Gray ABS Plastic Clear Lid w/ Bottom Flange	Off White Polycarbonate Opaque Lid w/ Bottom Flange	Off-White Polycarbonate Clear Lid w/ Bottom Flange	Length	Width	Height (Including Lid)	Optional Inner Panels	
							Plastic	Aluminum
RP1285BF	RP1285BFC	RP1280BF	RP1280BFC	186	146	75	STC128	STA128
RP1375BF	RP1375BFC	RP1370BF	RP1370BFC	186	146	90	STC128	STA128
RP1385BF	RP1385BFC	RP1380BF	RP1380BFC	186	146	110	STC128	STA128

Mounting Feet Kits (sets of 4)

Part No.	Material	Style	Compatible RP Series Enclosures
MF0040	Polycarbonate	Cross Shape	All except RP1450, 1455, 1460, 1465, 1610, 1615, 1630, 1635
MF0045	ABS Plastic	Cross Shape	All except RP1450, 1455, 1460, 1465, 1610, 1615, 1630, 1635
MF0060	Polycarbonate	Closed Slot	All except RP1450, 1455, 1460, 1465, 1610, 1615, 1630, 1635
MF0061	ABS Plastic	Closed Slot	All except RP1450, 1455, 1460, 1465, 1610, 1615, 1630, 1635
MF0300	Stainless Steel		All except RP1450, 1455, 1460, 1465, 1610, 1615, 1630, 1635
MF0050	Polycarbonate	Open "U" Slot	RP1450, 1455, 1460, 1465, 1610, 1615, 1630 & 1635 only
MF0055	ABS Plastic	Open "U" Slot	RP1450, 1455, 1460, 1465, 1610, 1615, 1630 & 1635 only

50-Pack of PC Board screws

Part No.	SC622-50

50-pack of Replacement Lid Screws

Part No.	SC619-50

Data subject to change without notice

© 2021. Hammond Manufacturing Ltd. All rights reserved.