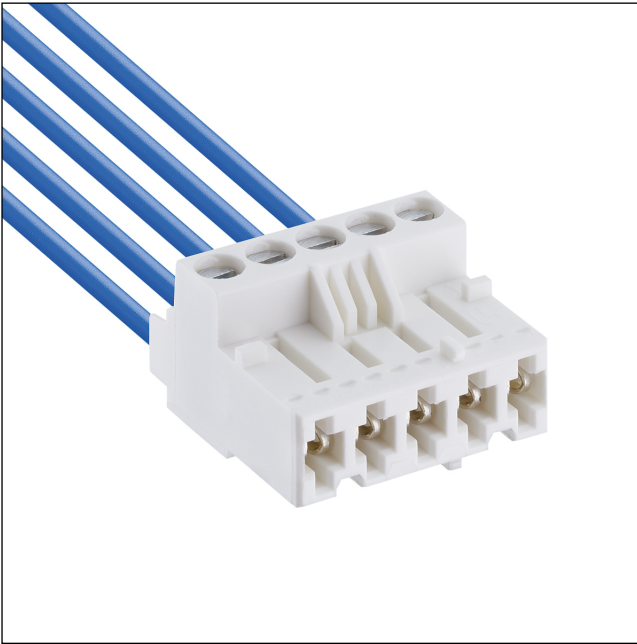


36

3611

RAST 5 connectors, pitch 5.0 mm



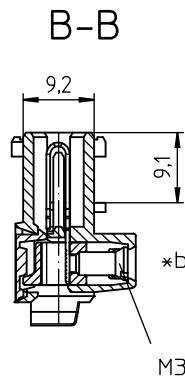
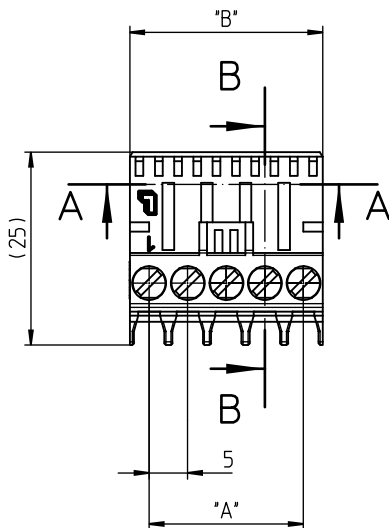
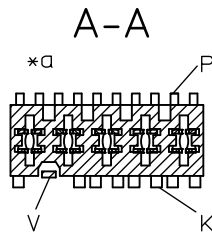
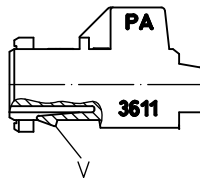
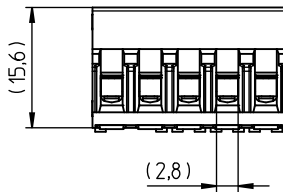
RAST 5 connector for indirect mating, with screw terminal, with lift clamp with protection against misplacing, with interior locking, consecutive placement without loss of pitch

Approvals:



36

3611



*a K = keying
P = positioning
V = lock

*b all screw clamps of the connector to be tightened with the indicated torque

Environmental conditions

Temperature range -40 °C/+125 °C – 3611
-40 °C/+130 °C – 3611 M08¹


¹ upper limit temperature (insulating body) RTI (electrical) of the UL Yellow Card

Materials

Insulating body PA, V-2 according to UL94 – 3611
PA, V-2 according to UL94 – 3611 M08¹
Contact spring CuSn, tin-plated
Clamp CuZn, nickel-plated
Screw steel, zinc-plated and chromatiert

¹ M08: component glow wire resistant (GWT 750 °C), testing acc. to IEC 60695-2-11, assessment acc. to IEC 60335-1 (flame < 2 s)

Mechanical data

Insertion force/contact ≤ 4,0 N
Withdrawal force/contact ≥ 1,0 N
Tightening torque screw 0,5 Nm
Keying proposals at www.lumberg.com 

Connectable conductors for screw clamp

Section stranded wire 0,14–2,5 mm² (AWG 26–14)
Section stranded wire with ferrule 0,25–2,5 mm² (AWG 24–14)
Section solid wire 0,14–4,0 mm² (AWG 26–12)
Stripping length 8 ± 1 mm

Electrical data (at T_{amb} 20 °C)

Contact resistance ≤ 5 mΩ
Rated current 10 A (T_{amb} 70 °C)
Rated voltage 630 V AC (VDE)/250 V DC (UL, CSA) – 3611
320 V AC (VDE)/250 V DC (UL, CSA) – 3611 M08
Material group I (IEC)/0 (UL) (CTI ≥ 600) – 3611
IIIa (IEC)/2 (UL) (CTI ≥ 250) – 3611 M08
Creepage distance 3,4 mm
Clearance 3,4 mm
Insulation resistance > 10 GΩ

Associated products

Counterparts

3618	3618-1	3618-2
3618-3	361899	361899-1
361899-2	361899-3	3641
364199	3642	364299
3643	364399	3644
364499	3645	364599
3647	3648	3649
3671	367199	3672
367299	3673	367399
3674	367499	3676
3677	3678	3679
3680	3683	

36

3611

Designation	Pole Number	PU (Pieces)	MDQ (Pieces)	Dimensions	
				A (mm)	B (mm)
3611 02	2	400	2000	5	9.9
3611 03	3	400	2000	10	14.9
3611 04	4	200	1000	15	19.9
3611 05	5	200	1000	20	24.9
3611 06	6	200	1000	25	29.9
3611 07	7	100	1000	30	34.9

Designation to be completed by further details (e.g. for keying, color or material options).

Packaging:

in bulk, in a cardboard box