

# Hub City™ Parallel Shaft Drives

## Model 22 – Single Reduction

### Features

- Rugged cast iron housing designed for rigid gear and bearing support.
- Alloy shafting for greater strength.
- Tapered roller bearings for endurance and strength.
- Choice of four (4) standard gear ratios.
- Heat treated alloy steel gearing for strength and long wear life.
- Heavy-duty industrial seals to keep lubricant in and dirt out.
- Shaft mount units available. (Style SO.)
- Foot mount kits available. Part Number 0229-00026.
- Hub City lubricant recommended. (Refer to Section M)



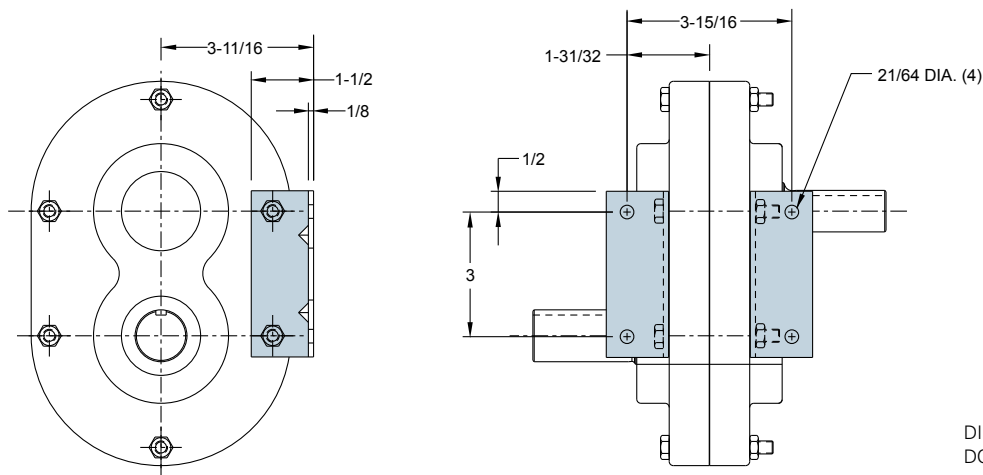
SINGLE REDUCTION UNITS PROVIDE OPPOSITE DIRECTION OUTPUT ROTATION

### Rating Table

INPUT RPM		RATIOS			
		1:1	1.5:1	2:1	2.53:1
1750	INPUT HORSEPOWER	26.3	21.2	17.7	14
	OUTPUT RPM.	1750	1250	875	692
	OUTPUT TORQUE IN. LBS.	919	1111	1237	1237
1150	INPUT HORSEPOWER	18.9	15	12.3	9.9
	OUTPUT RPM	1150	767	575	455
	OUTPUT TORQUE IN. LBS.	1005	1196	1308	1332
850	INPUT HORSEPOWER	15.3	12	10	7.9
	OUTPUT RPM	850	567	425	336
	OUTPUT TORQUE IN. LBS.	1100	1295	1438	1438
690	INPUT HORSEPOWER	12.9	10.2	8.5	6.9
	OUTPUT RPM	690	460	345	273
	OUTPUT TORQUE IN. LBS.	1143	1356	1506	1547
100	INPUT HORSEPOWER	2.3	1.9	1.4	1.1
	OUTPUT RPM	100	67	50	40
	OUTPUT TORQUE IN. LBS.	1406	1742	1712	1701

### Foot Mounting Kit

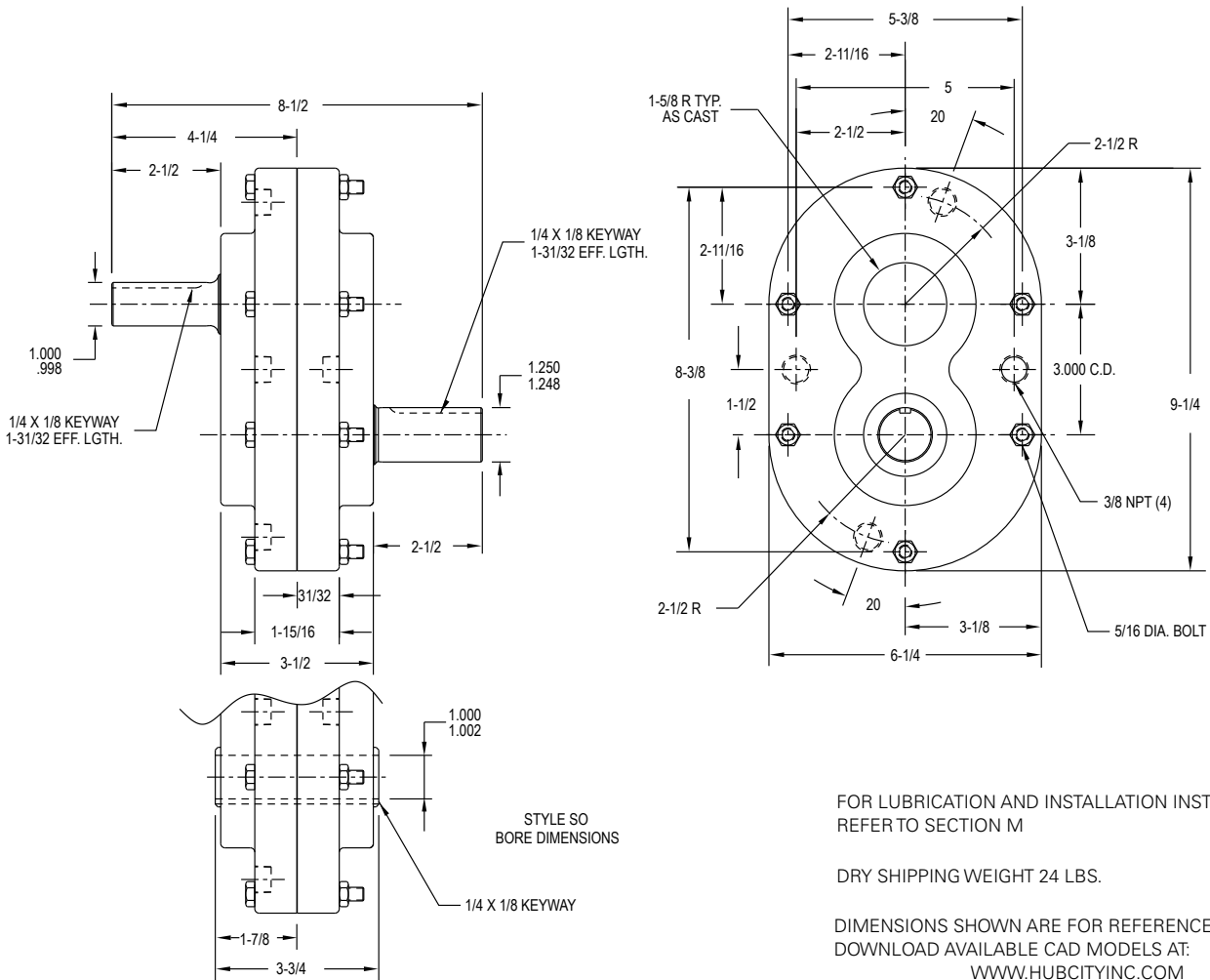
MUST BE ORDERED IN ADDITION TO DRIVE IF REQUIRED.  
PART NO. 0229-00026



DIMENSIONS SHOWN ARE FOR REFERENCE ONLY.  
DOWNLOAD AVAILABLE CAD MODELS AT:  
WWW.HUBCITYINC.COM

# Hub City™ Parallel Shaft Drives

## Model 22 – Single Reduction

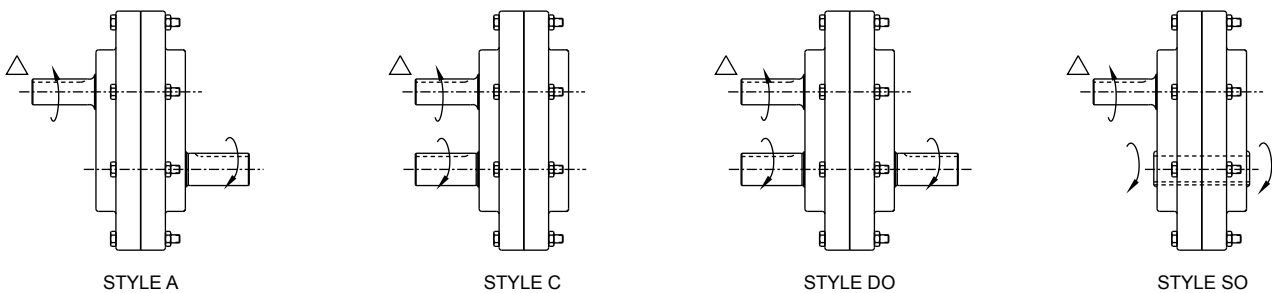


FOR LUBRICATION AND INSTALLATION INSTRUCTIONS - REFER TO SECTION M

DRY SHIPPING WEIGHT 24 LBS.

DIMENSIONS SHOWN ARE FOR REFERENCE ONLY.  
 DOWNLOAD AVAILABLE CAD MODELS AT:  
[WWW.HUBCITYINC.COM](http://WWW.HUBCITYINC.COM)

### Standard Styles Available



Δ INDICATES HIGH SPEED SHAFT. OTHER STYLES AVAILABLE.

CONSULT FACTORY FOR VERTICAL SHAFT LUBRICATION RECOMMENDATIONS

INPUT SHAFT CAN BE ROTATED IN EITHER DIRECTION