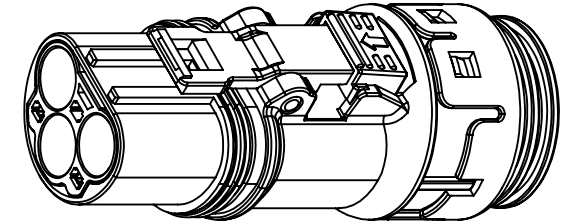
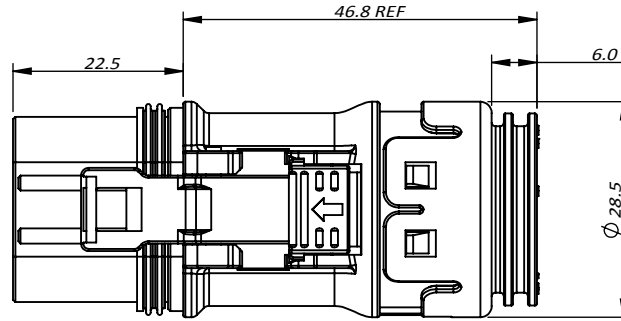
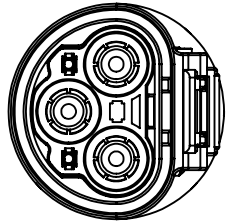


THIS DRAWING IS SUPPLIED FOR INFORMATION ONLY. DESIGN FEATURES, SPECIFICATIONS AND PERFORMANCE DATA SHOWN HEREON ARE THE PROPERTY OF THE AMPHENOL CORPORATION. NO RIGHTS OF REPRODUCTION ARE IMPLIED. ALL DIMENSIONS ARE SUBJECT TO NORMAL MANUFACTURING VARIATIONS.

# CUSTOMER DRAWING

REVISIONS				
REV#	REVISION ACTION	REV.BY:	APPR.BY:	DATE
1	INITIAL RELEASE	RW	GX	03/14/2016
2	Update spec & change appearance	RW	TS	05/06/2016
3	Update spec	SW	TS	08/24/2016



规格参数 (Spec.):

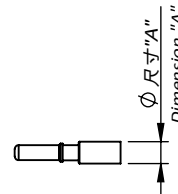
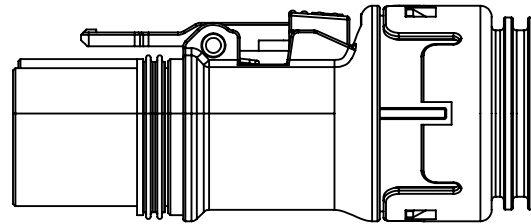
1. 工作温度 Operating temperature: -40°C ~ +125°C.
2. 带高压互锁 Electrical interlock (HVIL)(Optional).
3. 额定电流 Current rating: 35A(Max.)
4. 额定电压 Operating voltage: 400 VAC, 690 VDC.
5. 耐电压 Dielectric withstanding voltage: 4000 VDC.
6. 防护等级 Protection class: IP67 (Mating condition).
7. 电磁屏蔽 Shielding.
8. 机械寿命 Mating cycle: 100 Min.
9. 对配插座见图纸 Mating receptacle see drawing: "PL083-40".
10. 接屏蔽线 Accepted Shielding Wire.
11. 防火等级 Flammability grade: 94-V0

### Standard Part List (With HVIL)

Model NO.	Recommended Shielding Wire OD	Dimension "A"	Mating Rcpt Model NO.
PL183X-41-2.5	5.0~5.4mm	Φ 3.70mm	PL083X-41-2.5
PL183Y-41-2.5			PL083Y-41-2.5
PL183U-41-2.5			PL083U-41-2.5
PL183X-41-4	5.6~6.0mm	Φ 4.57mm	PL083X-41-4
PL183Y-41-4			PL083Y-41-4
PL183U-41-4			PL083U-41-4
PL183X-41-6	6.4~7.0mm	Φ 5.80mm	PL083X-41-6
PL183Y-41-6			PL083Y-41-6
PL183U-41-6			PL083U-41-6

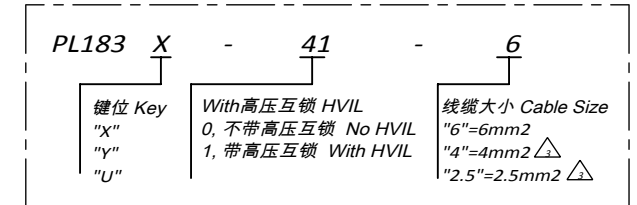
### Standard Part List (Without HVIL)

Model NO.	Recommended Shielding Wire OD	Dimension "A"	Mating Rcpt Model NO.
PL183X-40-2.5	5.0~5.4mm	Φ 3.70mm	PL083X-40-2.5
PL183Y-40-2.5			PL083Y-40-2.5
PL183U-40-2.5			PL083U-40-2.5
PL183X-40-4	5.6~6.0mm	Φ 4.57mm	PL083X-40-4
PL183Y-40-4			PL083Y-40-4
PL183U-40-4			PL083U-40-4
PL183X-40-6	6.4~7.0mm	Φ 5.80mm	PL083X-40-6
PL183Y-40-6			PL083Y-40-6
PL183U-40-6			PL083U-40-6



端子  
Terminal

### 订购信息 Ordering Information



		Amphenol Technical Products International GZ.					PART NAME:	
		第三角投影 THIRD ANGLE PROJECTION	页面 SHEET	幅面 SIZE	版次 REV.	比例 SCALE	PwrLok 3.6mm 3POS Plug Conn	
签名 SIGNATURE	日期 DATE	UNLESS OTHERWISE SPECIFIED 1) All dimensions are in metric (mm). 2) Tolerances are as follows: 1.PL DEC ± 1.00 2.PL DEC ± 0.50 3.PL DEC ± 0.20				DWG NO:		
制图 DRAWN	SW	08/24/2016	Angles ±1°				PL183-40	
审核 CHECKED							CUST PART #	CUST REV.
批准 APPROVAL							N/A	-