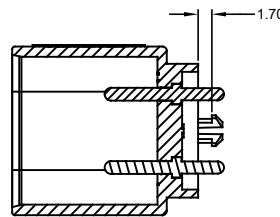
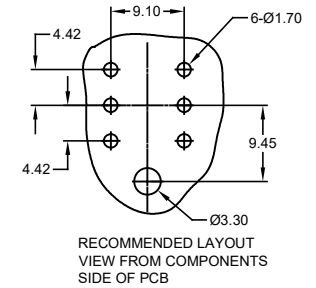
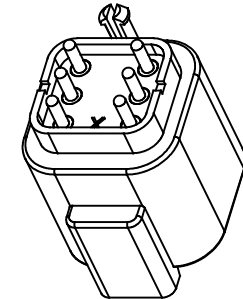
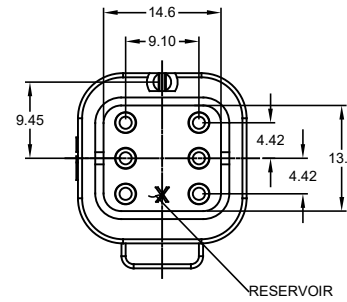
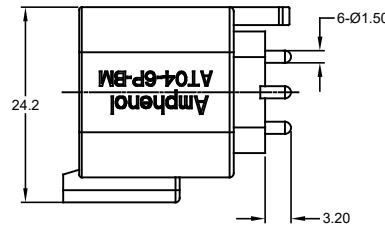
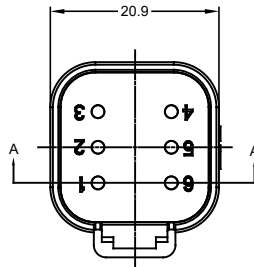
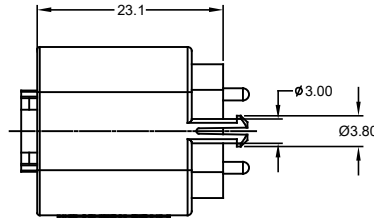


REVISIONS					
REV	ECO	DESCRIPTION	DATE	BY	APPR
A1	-	RELEASE NEW DWG FORMAT	SEP/24/14	ORION	
A2	-	UPDATE DRAWING	OCT/06/14	JARRY	
A3	-	UPDATE DRAWING	OCT/21/14	JARRY	
A4	-	ADD NICKEL PLATING VERSION	APR/24/15	ORION	
A5	-	CHANGE PC TAIL LENGTH	AUG/04/15	ORION	TOMMY
A6	-	REMOVE A DIMENSION AND ADD COLOR	AUG/10/15	ORION	TOMMY
A7	-	REVISE DRAWING	10JUL20	JHEAD	DH



SECTION A-A

AT04-2P-BMXX VARIANTS		
CONTACT PLATING	POTTING OR NOT IN RESERVOIR	PART NUMBER
GOLD	NO POTTING	AT04-6P-BM01
GOLD	POTTING	AT04-6P-BM02
NICKEL	NO POTTING	AT04-6P-BM03
NICKEL	POTTING	AT04-6P-BM04

NOTES: UNLESS OTHERWISE SPECIFIED

- MATERIAL:  
HOUSING: THERMOPLASTIC; COLOR: BLACK  
CONTACT: COPPER ALLOY
- MODIFICATIONS: PCB MOUNT
- SPECIFICATIONS:  
3.1 CURRENT RATING: 13 AMPS  
3.2 OPERATING TEMPERATURE: -55°C TO +125°C  
3.3 DIELECTRIC WITHSTANDING VOLTAGE: LESS THAN 2 MILLIAMPS CURRENT LEAKAGE @ 1500 VOLTS AC.  
3.4 INSULATION RESISTANCE: 1000 MEGOHMS MIN @ 25°C.  
3.5 MOISTURE RESISTANCE: IP67 ( MATED CONDITION )  
3.6 MATING CYCLE DURABILITY: 100 CYCLES  
3.7 RoHS COMPLIANT
- MATING PART: AT06-6S\* PLUG (\* = MODIFICATIONS AND COLORS )
- ALL DIMENSIONS ARE FOR REFERENCE USE ONLY.
- POTTED CONNECTORS SPECIFIED FOR UP TO 5 P.S.I. APPLICATIONS.

TITLE: PCB MOUNT RECEPTACLE 6 PINS STRAIGHT A SERIES  
DWG NO.: AT04-6P-BMXX  
REV: A7  
SHEET: 1 OF 1

SEE PART NUMBER CHART		PART NUMBER		DESCRIPTION		ITEM
QUANTITY						
MATERIALS LIST						
UNLESS OTHERWISE SPECIFIED			SIGNATURES		DATE	
1) All dimensions are in metric (mm).			DRAWN: ORION LI		SEP/24/14	
2) Tolerances are as follows:			CHECKED:			
1 PL DEC ±0.30 Fractions ±1/64			ENGINEER:			
2 PL DEC ±0.15			APPROVAL: TOMMY XIE		SEP/24/14	
3 PL DEC ±0.08			CUSTOMER:			
3) Note reference =			THIS DRAWING IS SUPPLIED FOR INFORMATION ONLY. DESIGN FEATURES, SPECIFICATIONS AND PERFORMANCE DATA SHOWN HEREON ARE THE PROPERTY OF THE AMPHENOL CORPORATION. NO RIGHTS OF REPRODUCTION ARE IMPLIED. ALL DIMENSIONS ARE SUBJECT TO NORMAL MANUFACTURING VARIATIONS.			
MATERIAL SPECIFICATIONS:			CUSTOMER:		SCALE: NONE	
PROCESS SPECIFICATIONS:			NEXT ASSY:		SIZE: TYPE: B C- DWG NO.: AT04-6P-BMXX REVISION: A7	
SHEET 1 OF 1			SHEET 1 OF 1		SHEET 1 OF 1	

**Amphenol**

Sine Systems - www.amphenol-sine.com  
44724 Morley Drive  
Clinton Township, MI 48036

BOARDLOCK PCB MOUNT RECEPTACLE,  
6 PIN, STRAIGHT, A SERIES

SIZE: TYPE: B C- DWG NO.: AT04-6P-BMXX REVISION: A7  
SCALE: NONE SHEET 1 OF 1