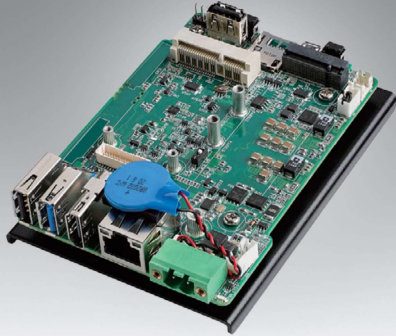


# MIC-710AIL-DVA1

## NVIDIA® Jetson Nano™ Developer Kit

NEW



### Features

- NVIDIA® Jetson Nano™ embedded
- 1 x M.2 2280 NVMe for storage
- 1 x Mini PCIe for expansion
- Linux OS with BSP (board support package)
- Supports deep learning trained models



### Specifications

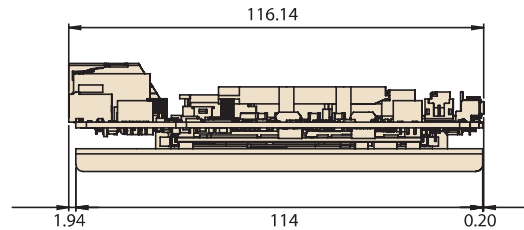
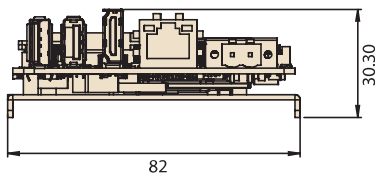
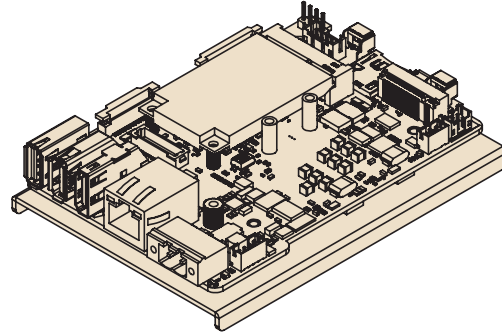
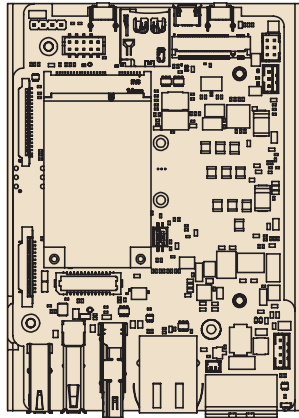
Processor System	CPU	Quad Core ARM Cortex A57 (Max. operating frequency: 1.43GHz)	
	GPU	Maxwell GPU, 128 CUDA core, performance up to 472 GFLOPS (FP16) (Max. Frequency: 921MHz)	
	Memory	4GB LPDDR4	
	Flash	16G of eMMC	
Ethernet	Interface	RJ-45	
	Controller	On-module embedded	
	Speed	1 x Gigabit Ethernet (10/100/1000 Mbps)	
I/O	Display	HDMI (Max. resolution 3840x2160 @ 60Hz)	
	USB	External	
			1 x USB 2.0 1 x USB 3.0
	OTG USB (External)	1 x Micro USB	
	DI/DO	-	
	COM	RS-232 (By pin header)	
SIM card	1 x Nano SIM		
Expansion	MiniPCIe	1 x Full size MiniPCIe* (PClex1 + USB 2.0)	
Storage	M.2	1 x M.2 2280 NVMe* (PClex1 M Key)	
	SD card	1 x Micro SD	
Power	Power supply	Power adapter: 12-24V, 4A-2A (adapter is optional)	
	Power type	Terminal block 2 Pin	
Mechanical	Dimensions (W x D x H)	116 x 82 x 30 mm; 4.5 x 3.2 x 1.18 in	
	Weight	150 g; .33 lb	
Operating System	Linux	Ubuntu 18.04 with JetPack	

SW1	MiniPCIe	NVMe M.2
ON*	USB 2.0 + PClex1	X
OFF	USB 2.0	PClex1

\*Default SW1 is ON

## Dimensions

Unit: mm



## Ordering Information

Part Number	NVIDIA Jetson	Core Count	Memory	eMMC
MIC-710AIL-DVA1	Nano	4-core	4GB LPDDR4	16GB

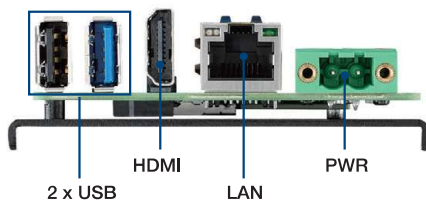
## Packing List

Part Number	Description	Quantity
1652002202	Power connector-2Pin	1
1700023619-01	Micro USB cable for system recovery	1
1930005673-11	M.2 screw	1
1930008089	MiniPCIe screw	2

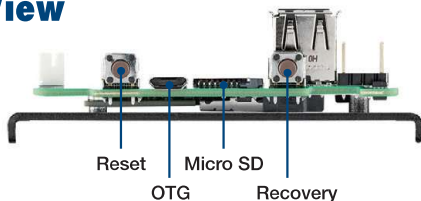
## Optional

Part Number	Description
96PSA-A65W19P2-1	Power Adapter 100-240V 65W 19V
1700001524	Power Cord UL 3P 10A 125V 183cm (US)
170203183C	Power Cord EU 3P 2.5A 250V 183cm (EU)
170203180A	Power Cord BSI 3P 2.5A 250V 183cm (UK)
1702031836	Power Cord SAA 3P 10A 250V 183cm (AU)
1700008921	Power Cord PSE 3P 7A 125V 183cm (Japan)
1700019146	Power Cord CCC 3P 2.5A 250V 183cm (China)

## Front View



## Back View



## Top View

