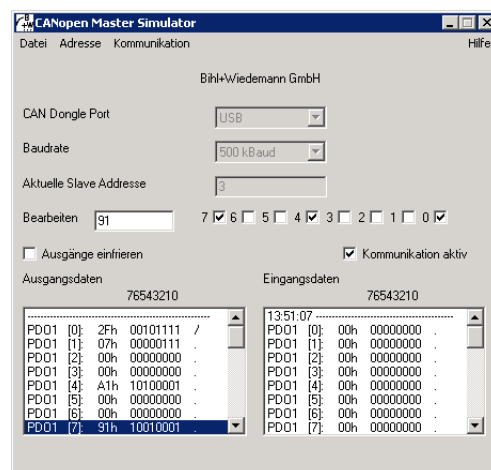


Monitoring Software for CANopen Slaves

CAN Dongle



The CANopen Master Simulator is an easy to use software for data exchange with CANopen slaves of many suppliers. The CANopen Master Simulator can exchange data with the slaves even without EDS-file. Input data can be read, output data can be written. Furthermore it is possible to read and write any object independent of the state of communication.

The CANopen Master Simulator offers the possibility to scan a DeviceNet network and find all connected slaves. The digital I/O

data can be displayed binary, hexadecimal and also as ASCII code.

Analog I/O data are displayed decimal. The CANopen output data can be transmitted consistently to the CANopen slave.

The CANopen Master Simulator consists of the software and a CAN dongle. The CAN dongle is the ideal interface converter between the USB interface of a PC and CANopen. The converter needs for power supply only the USB interface. Therefore it is also suitable for mobile use with a laptop or a notebook.

Article no.	BW1453
General data	
Name	CAN dongle
Interfaces	USB interface CAN interface with 9-pin D-sub-plug (male)
Power supply	powered by the USB interface of the PC
Length of connector cables	max. 2 m
Transfer rates	5, 10, 20, 50, 100, 125, 250, 500 oder 1000 Kbaud
Installation	
Technical requirements	IBM compatible PC since 80486
System requirements	
Operating system	Windows 98, Windows NT / Windows 2000, Windows Me / Windows XP / Windows 7 / Windows 10 (32 bit and 64 bit)
Environment	
Operating temperature	0 °C ... +55 °C
Storage temperature	-25 °C ... +70 °C
Specification	
Specification	Software: <ul style="list-style-type: none"> CANopen Master Simulator CANopen dongle

Accessories:

- D-Sub-data transmission cord for ASi Gateways with CAN interface