

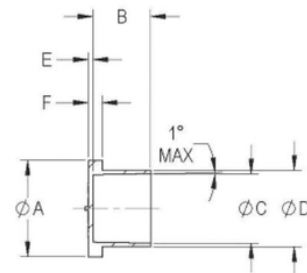
AS138 Series

Electrical Connector Dust Caps



AS138 Series electrical connector dust caps protect circular electrical connectors. This part is the only line of caps in the industry that meets the new SAE Aerospace specification AS85049/138.

- Tooled and engraved in full compliance with AS85049/138 and does not reference any other specifications
- Engraving includes the specification number, dash number, material code and the Caplugs part number for easy and positive identification
- Includes proper ESD Symbol as per the specification.
- Parts are listed in ascending order in relation to the dash number and are repeated for each material code (A, B, and C).
- Applicable specifications: SAE AS85049/138



Material:
A = Low-Density Polyethylene **Color:** Per specification
B = Electrostatic Dissipative **Color:** Black
C = Conductive **Color:** Black

Caplugs No.	Dimensions										Packaging		
	A		B		C		D		E		Carton Quantity	Mini Pak Quantity	Micro Pak Quantity
	In	mm	In	mm	In	mm	In	mm	In	mm			
AS138-08A	0.430	10.92	0.500	12.70	0.245	6.22	0.305	7.74	0.035	0.88	5000	1000	200
AS138-08B	0.430	10.92	0.500	12.70	0.245	6.22	0.305	7.74	0.035	0.88	5000	1000	200
AS138-08C	0.430	10.92	0.500	12.70	0.245	6.22	0.305	7.74	0.035	0.88	5000	1000	200
AS138-10A	0.500	12.70	0.500	12.70	0.305	7.74	0.365	9.27	0.035	0.88	5000	1000	200
AS138-10B	0.500	12.70	0.500	12.70	0.305	7.74	0.365	9.27	0.035	0.88	5000	1000	200
AS138-10C	0.500	12.70	0.500	12.70	0.305	7.74	0.365	9.27	0.035	0.88	5000	1000	200
AS138-11A	0.585	14.85	0.500	12.70	0.345	8.76	0.405	10.28	0.035	0.88	5000	1000	200
AS138-11B	0.585	14.85	0.500	12.70	0.345	8.76	0.405	10.28	0.035	0.88	5000	1000	200
AS138-11C	0.585	14.85	0.500	12.70	0.345	8.76	0.405	10.28	0.035	0.88	5000	1000	200
AS138-12A	0.620	15.74	0.500	12.70	0.368	9.34	0.438	11.12	0.035	0.88	5000	1000	200
AS138-12B	0.620	15.74	0.500	12.70	0.368	9.34	0.438	11.12	0.035	0.88	5000	1000	200
AS138-12C	0.620	15.74	0.500	12.70	0.368	9.34	0.438	11.12	0.035	0.88	5000	1000	200
AS138-14A	0.670	17.01	0.625	15.87	0.413	10.49	0.483	12.26	0.040	1.01	5000	1000	200
AS138-14B	0.670	17.01	0.625	15.87	0.413	10.49	0.483	12.26	0.040	1.01	5000	1000	200
AS138-14C	0.670	17.01	0.625	15.87	0.413	10.49	0.483	12.26	0.040	1.01	5000	1000	200
AS138-15A	0.682	17.32	0.625	15.87	0.442	11.22	0.502	12.75	0.040	1.01	5000	1000	200
AS138-15B	0.682	17.32	0.625	15.87	0.442	11.22	0.502	12.75	0.040	1.01	5000	1000	200
AS138-15C	0.682	17.32	0.625	15.87	0.442	11.22	0.502	12.75	0.040	1.01	5000	1000	200
AS138-16A	0.740	18.79	0.500	12.70	0.480	12.19	0.540	13.71	0.040	1.01	5000	1000	200
AS138-16B	0.740	18.79	0.500	12.70	0.480	12.19	0.540	13.71	0.040	1.01	5000	1000	200
AS138-16C	0.740	18.79	0.500	12.70	0.480	12.19	0.540	13.71	0.040	1.01	5000	1000	200
AS138-18A	0.750	19.05	0.625	15.87	0.530	13.46	0.595	15.11	0.040	1.01	5000	1000	200
AS138-18B	0.750	19.05	0.625	15.87	0.530	13.46	0.595	15.11	0.040	1.01	5000	1000	200
AS138-18C	0.750	19.05	0.625	15.87	0.530	13.46	0.595	15.11	0.040	1.01	5000	1000	200
AS138-19A	0.810	20.57	0.625	15.87	0.570	14.47	0.630	16.00	0.040	1.01	5000	1000	200
AS138-19B	0.810	20.57	0.625	15.87	0.570	14.47	0.630	16.00	0.040	1.01	5000	1000	200
AS138-19C	0.810	20.57	0.625	15.87	0.570	14.47	0.630	16.00	0.040	1.01	5000	1000	200
AS138-20A	0.840	21.33	0.500	12.70	0.605	15.36	0.665	16.89	0.040	1.01	5000	1000	200
AS138-20B	0.840	21.33	0.500	12.70	0.605	15.36	0.665	16.89	0.040	1.01	5000	1000	200
AS138-20C	0.840	21.33	0.500	12.70	0.605	15.36	0.665	16.89	0.040	1.01	5000	1000	200
AS138-22A	0.860	21.84	0.625	15.87	0.655	16.63	0.715	18.16	0.040	1.01	5000	1000	200
AS138-22B	0.860	21.84	0.625	15.87	0.655	16.63	0.715	18.16	0.040	1.01	5000	1000	200
AS138-22C	0.860	21.84	0.625	15.87	0.655	16.63	0.715	18.16	0.040	1.01	5000	1000	200