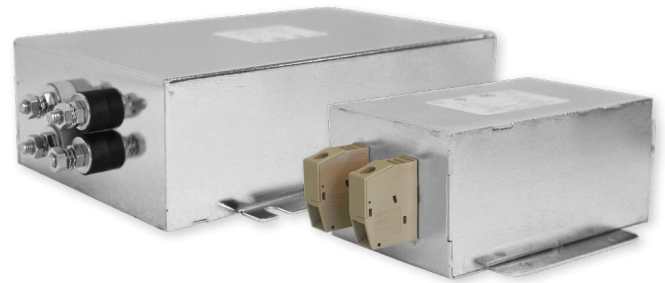


RP600

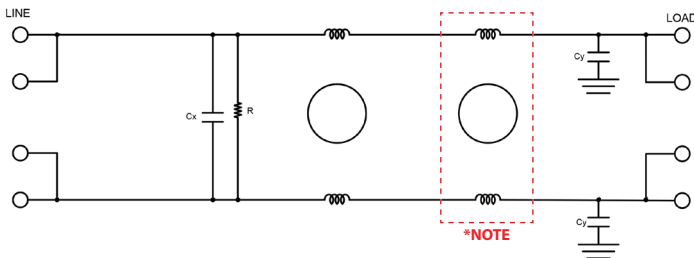
MAX PERFORMANCE DC POWER LINE FILTER

FEATURES

- » Rated currents include **15A, 30A, 60A, 80A, 100A, and 125A**
- » Dual Stage Line Filter
- » Available with **W** (wires), **S** (studs) and **C** (connectors) option
- » Agency Approved to UL1283 / 60929, CSA C22.2, EN 60939
- » Y-cap value can be adjusted to fit specification



ELECTRICAL SCHEMATIC



SPECIFICATIONS

MAX. OPERATING VOLTAGE	100VDC +10%
AMBIENT TEMPERATURE	-25 TO 55°C
CLIMATIC CATEGORY	25/100/21
TERMINALS (-T)	WIRE LEADS
	STUDS 15-60A (M5)
	80-125A (M6)
	CONNECTORS

***NOTE** INDUCTOR REMOVED FOR 100 A AND 125 A

TYP. WEIGHT, LBS (KG) 1.3 - 7.7 (0.6 - 3.5)

HIPOT RATINGS

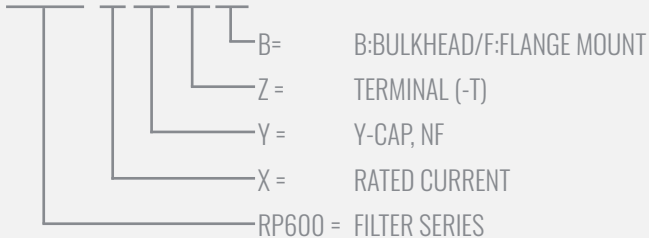
LINE TO GROUND 2700 VDC

TYPICAL APPLICATIONS

- ✓ Telecom systems
- ✓ Rack mounted
- ✓ Enclosures
- ✓ MIL-Aero
- ✓ Mobile System

HOW TO ORDER

RP600-X-Y-Z-B



NOTE: USE ANY COMBINATION OF -X (AMPS) WITH ANY -Y RATINGS

E.G. **RP600-30-100-S-B** (6AMPS WITH 2.2 NF YCAP)

For **X, Y, Z** and **B** options see product specification table.

RP600

HIGH PERFORMANCE DC POWER LINE FILTER

MODEL NO.	RATED CURRENT, A @ 40° C	Y-CAP, nF	TERMINAL OPTIONS			MOUNTING OPTIONS		MAX. DIMENSIONS" (MM)			
			(W) INPUT/ OUTPUT	(S) INPUT/ OUTPUT	(C) INPUT/ OUTPUT	BULKHEAD	FLANGE	WIDTH	(LENGTH)	HEIGHT	
RP600-15-4.7-C-B	15	4.7			✓	✓			5.06"(129)	5.99"(152)	1.48"(38)
RP600-15-4.7-C-F	15	4.7			✓		✓		3.10"(79)	5.63"(143)	1.78"(45)
RP600-15-4.7-S-B	15	4.7		✓		✓			5.06"(129)	5.47"(139)	1.48"(38)
RP600-15-4.7-S-F	15	4.7		✓			✓		3.10"(79)	5.12"(130)	1.78"(45)
RP600-15-4.7-W-B	15	4.7	✓			✓			*	*	*
RP600-15-4.7-W-F	15	4.7	✓				✓		*	*	*
RP600-15-10-C-B	15	10			✓	✓			5.06"(129)	5.99"(152)	1.48"(38)
RP600-15-10-C-F	15	10			✓		✓		3.10"(79)	5.63"(143)	1.78"(45)
RP600-15-10-S-B	15	10		✓		✓			5.06"(129)	5.47"(139)	1.48"(38)
RP600-15-10-S-F	15	10		✓			✓		3.10"(79)	5.12"(130)	1.78"(45)
RP600-15-10-W-B	15	10	✓			✓			*	*	*
RP600-15-10-W-F	15	10	✓				✓		*	*	*
RP600-15-100-C-B	15	100			✓	✓			5.06"(129)	5.99"(152)	1.48"(38)
RP600-15-100-C-F	15	100			✓		✓		3.10"(79)	5.63"(143)	1.78"(45)
RP600-15-100-S-B	15	100		✓		✓			5.06"(129)	5.47"(139)	1.48"(38)
RP600-15-100-S-F	15	100		✓			✓		3.10"(79)	5.12"(130)	1.78"(45)
RP600-15-100-W-B	15	100	✓			✓			*	*	*
RP600-15-100-W-F	15	100	✓				✓		*	*	*
RP600-15-1000-C-B	15	1000			✓	✓			5.06"(129)	5.99"(152)	1.48"(38)
RP600-15-1000-C-F	15	1000			✓		✓		3.10"(79)	5.63"(143)	1.78"(45)
RP600-15-1000-S-B	15	1000		✓		✓			5.06"(129)	5.47"(139)	1.48"(38)
RP600-15-1000-S-F	15	1000		✓			✓		3.10"(79)	5.12"(130)	1.78"(45)
RP600-15-1000-W-B	15	1000	✓			✓			*	*	*
RP600-15-1000-W-F	15	1000	✓				✓		*	*	*
RP600-30-4.7-C-B	30	4.7			✓	✓			5.06"(129)	7.99"(203)	1.48"(38)
RP600-30-4.7-C-F	30	4.7			✓		✓		3.96"(101)	6.49"(165)	2.18"(55)
RP600-30-4.7-S-B	30	4.7		✓		✓			5.06"(129)	7.48"(190)	1.48"(38)
RP600-30-4.7-S-F	30	4.7		✓			✓		3.96"(101)	5.96"(152)	2.18"(55)
RP600-30-4.7-W-B	30	4.7	✓			✓			*	*	*
RP600-30-4.7-W-F	30	4.7	✓				✓		*	*	*
RP600-30-10-C-B	30	10			✓	✓			5.06"(129)	7.99"(203)	1.48"(38)
RP600-30-10-C-F	30	10			✓		✓		3.96"(101)	6.49"(165)	2.18"(55)
RP600-30-10-S-B	30	10		✓		✓			5.06"(129)	7.48"(190)	1.48"(38)
RP600-30-10-S-F	30	10		✓			✓		3.96"(101)	5.96"(152)	2.18"(55)

ADDITIONAL MODEL NO. >>

RP600

HIGH PERFORMANCE DC POWER LINE FILTER

MODEL NO.	RATED CURRENT, A @ 40° C	Y-CAP, nF	TERMINAL OPTIONS			MOUNTING OPTIONS		MAX. DIMENSIONS" (MM)		
			(W) INPUT/ OUTPUT	(S) INPUT/ OUTPUT	(C) INPUT/ OUTPUT	BULKHEAD	FLANGE	WIDTH	(LENGTH)	HEIGHT
RP600-30-10-W-B	30	10	✓			✓		*	*	*
RP600-30-10-W-F	30	10	✓				✓	*	*	*
RP600-30-100-C-B	30	100			✓	✓		5.06"(129)	7.99"(203)	1.48"(38)
RP600-30-100-C-F	30	100			✓		✓	3.96"(101)	6.49"(165)	2.18"(55)
RP600-30-100-S-B	30	100		✓		✓		5.06"(129)	7.48"(190)	1.48"(38)
RP600-30-100-S-F	30	100		✓			✓	3.96"(101)	5.96"(152)	2.18"(55)
RP600-30-100-W-B	30	100	✓			✓		*	*	*
RP600-30-100-W-F	30	100	✓				✓	*	*	*
RP600-30-1000-C-B	30	1000			✓	✓		5.06"(129)	7.99"(203)	1.48"(38)
RP600-30-1000-C-F	30	1000			✓		✓	3.96"(101)	6.49"(165)	2.18"(55)
RP600-30-1000-S-B	30	1000		✓		✓		5.06"(129)	7.48"(190)	1.48"(38)
RP600-30-1000-S-F	30	1000		✓			✓	3.96"(101)	5.96"(152)	2.18"(55)
RP600-30-1000-W-B	30	1000	✓			✓		*	*	*
RP600-30-1000-W-F	30	1000	✓				✓	*	*	*
RP600-60-4.7-C-B	60	4.7			✓	✓		5.06"(129)	8.99"(228)	1.48"(38)
RP600-60-4.7-C-F	60	4.7			✓		✓	5.48"(139)	7.87"(200)	2.55"(65)
RP600-60-4.7-S-B	60	4.7		✓		✓		5.06"(129)	9.40"(239)	1.48"(38)
RP600-60-4.7-S-F	60	4.7		✓			✓	5.48"(139)	8.31"(211)	2.55"(65)
RP600-60-4.7-W-B	60	4.7	✓			✓		*	*	*
RP600-60-4.7-W-F	60	4.7	✓				✓	*	*	*
RP600-60-10-C-B	60	10			✓	✓		5.06"(129)	8.99"(228)	1.48"(38)
RP600-60-10-C-F	60	10			✓		✓	5.48"(139)	7.87"(200)	2.55"(65)
RP600-60-10-S-B	60	10		✓		✓		5.06"(129)	9.40"(239)	1.48"(38)
RP600-60-10-S-F	60	10		✓			✓	5.48"(139)	8.31"(211)	2.55"(65)
RP600-60-10-W-B	60	10	✓			✓		*	*	*
RP600-60-10-W-F	60	10	✓				✓	*	*	*
RP600-60-100-C-B	60	100			✓	✓		5.06"(129)	8.99"(228)	1.48"(38)
RP600-60-100-C-F	60	100			✓		✓	5.48"(139)	7.87"(200)	2.55"(65)
RP600-60-100-S-B	60	100		✓		✓		5.06"(129)	9.40"(239)	1.48"(38)
RP600-60-100-S-F	60	100		✓			✓	5.48"(139)	8.31"(211)	2.55"(65)
RP600-60-100-W-B	60	100	✓			✓		*	*	*
RP600-60-100-W-F	60	100	✓				✓	*	*	*
RP600-60-1000-C-B	60	1000			✓	✓		5.06"(129)	8.99"(228)	1.48"(38)
RP600-60-1000-C-F	60	1000			✓		✓	5.48"(139)	7.87"(200)	2.55"(65)

ADDITIONAL MODEL NO. >>

RP600

HIGH PERFORMANCE DC POWER LINE FILTER

MODEL NO.	RATED CURRENT, A @ 40° C	Y-CAP, nF	TERMINAL OPTIONS			MOUNTING OPTIONS		MAX. DIMENSIONS" (MM)		
			(W) INPUT/ OUTPUT	(S) INPUT/ OUTPUT	(C) INPUT/ OUTPUT	BULKHEAD	FLANGE	WIDTH	(LENGTH)	HEIGHT
RP600-60-1000-S-B	60	1000		✓		✓		5.06"(129)	9.40"(239)	1.48"(38)
RP600-60-1000-S-F	60	1000		✓			✓	5.48"(139)	8.31"(211)	2.55"(65)
RP600-60-1000-W-B	60	1000	✓			✓		*	*	*
RP600-60-1000-W-F	60	1000	✓				✓	*	*	*
RP600-80-4.7-C-B	80	4.7			✓	✓		5.06"(129)	8.99"(228)	1.48"(38)
RP600-80-4.7-C-F	80	4.7			✓		✓	5.48"(139)	7.87"(200)	2.55"(65)
RP600-80-4.7-S-B	80	4.7		✓		✓		5.06"(129)	9.40"(239)	1.48"(38)
RP600-80-4.7-S-F	80	4.7		✓			✓	5.48"(139)	8.31"(211)	2.55"(65)
RP600-80-4.7-W-B	80	4.7	✓			✓		*	*	*
RP600-80-4.7-W-F	80	4.7	✓				✓	*	*	*
RP600-80-10-C-B	80	10			✓	✓		5.06"(129)	8.99"(228)	1.48"(38)
RP600-80-10-C-F	80	10			✓		✓	5.48"(139)	7.87"(200)	2.55"(65)
RP600-80-10-S-B	80	10		✓		✓		5.06"(129)	9.40"(239)	1.48"(38)
RP600-80-10-S-F	80	10		✓			✓	5.48"(139)	8.31"(211)	2.55"(65)
RP600-80-10-W-B	80	10	✓			✓		*	*	*
RP600-80-10-W-F	80	10	✓				✓	*	*	*
RP600-80-100-C-B	80	100			✓	✓		5.06"(129)	8.99"(228)	1.48"(38)
RP600-80-100-C-F	80	100			✓		✓	5.48"(139)	7.87"(200)	2.55"(65)
RP600-80-100-S-B	80	100		✓		✓		5.06"(129)	9.40"(239)	1.48"(38)
RP600-80-100-S-F	80	100		✓			✓	5.48"(139)	8.31"(211)	2.55"(65)
RP600-80-100-W-B	80	100	✓			✓		*	*	*
RP600-80-100-W-F	80	100	✓				✓	*	*	*
RP600-80-1000-C-B	80	1000			✓	✓		5.06"(129)	8.99"(228)	1.48"(38)
RP600-80-1000-C-F	80	1000			✓		✓	5.48"(139)	7.87"(200)	2.55"(65)
RP600-80-1000-S-B	80	1000		✓		✓		5.06"(129)	9.40"(239)	1.48"(38)
RP600-80-1000-S-F	80	1000		✓			✓	5.48"(139)	8.31"(211)	2.55"(65)
RP600-80-1000-W-B	80	1000	✓			✓		*	*	*
RP600-80-1000-W-F	80	1000	✓				✓	*	*	*
RP600-100-4.7-C-B	100	4.7			✓	✓		5.06"(129)	10.26"(261)	1.78"(45)
RP600-100-4.7-C-F	100	4.7			✓		✓	*	*	*
RP600-100-4.7-S-B	100	4.7		✓		✓		5.06"(129)	10.43"(265)	1.78"(45)
RP600-100-4.7-S-F	100	4.7		✓			✓	5.06"(129)	10.26"(261)	1.78"(45)
RP600-100-4.7-W-B	100	4.7	✓			✓		*	*	*
RP600-100-4.7-W-F	100	4.7	✓				✓	*	*	*

ADDITIONAL MODEL NO. >>

RP600

HIGH PERFORMANCE DC POWER LINE FILTER

MODEL NO.	RATED CURRENT, A @ 40° C	Y-CAP, nF	TERMINAL OPTIONS			MOUNTING OPTIONS		MAX. DIMENSIONS" (MM)			
			(W) INPUT/ OUTPUT	(S) INPUT/ OUTPUT	(C) INPUT/ OUTPUT	BULKHEAD	FLANGE	WIDTH	(LENGTH)	HEIGHT	
RP600-100-10-C-B	100	10			✓	✓			5.06"(129)	10.26"(261)	1.78"(45)
RP600-100-10-C-F	100	10			✓		✓	*	*	*	
RP600-100-10-S-B	100	10		✓		✓		5.06"(129)	10.43"(265)	1.78"(45)	
RP600-100-10-S-F	100	10		✓			✓	5.06"(129)	10.26"(261)	1.78"(45)	
RP600-100-10-W-B	100	10	✓			✓		*	*	*	
RP600-100-10-W-F	100	10	✓				✓	*	*	*	
RP600-100-100-C-B	100	100			✓	✓		5.06"(129)	10.26"(261)	1.78"(45)	
RP600-100-100-C-F	100	100			✓		✓	*	*	*	
RP600-100-100-S-B	100	100		✓		✓		5.06"(129)	10.43"(265)	1.78"(45)	
RP600-100-100-S-F	100	100		✓			✓	5.06"(129)	10.26"(261)	1.78"(45)	
RP600-100-100-W-B	100	100	✓			✓		*	*	*	
RP600-100-100-W-F	100	100	✓				✓	*	*	*	
RP600-100-1000-C-B	100	1000			✓	✓		5.06"(129)	10.26"(261)	1.78"(45)	
RP600-100-1000-C-F	100	1000			✓		✓	*	*	*	
RP600-100-1000-S-B	100	1000		✓		✓		5.06"(129)	10.43"(265)	1.78"(45)	
RP600-100-1000-S-F	100	1000		✓			✓	5.06"(129)	10.26"(261)	1.78"(45)	
RP600-100-1000-W-B	100	1000	✓			✓		*	*	*	
RP600-100-1000-W-F	100	1000	✓				✓	*	*	*	
RP600-125-4.7-C-B	125	4.7			✓	✓		5.06"(129)	10.26"(261)	1.78"(45)	
RP600-125-4.7-C-F	125	4.7			✓		✓	*	*	*	
RP600-125-4.7-S-B	125	4.7		✓		✓		5.06"(129)	10.43"(265)	1.78"(45)	
RP600-125-4.7-S-F	125	4.7		✓			✓	5.06"(129)	10.26"(261)	1.78"(45)	
RP600-125-4.7-W-B	125	4.7	✓			✓		*	*	*	
RP600-125-4.7-W-F	125	4.7	✓				✓	*	*	*	
RP600-125-10-C-B	125	10			✓	✓		5.06"(129)	10.26"(261)	1.78"(45)	
RP600-125-10-C-F	125	10			✓		✓	*	*	*	
RP600-125-10-S-B	125	10		✓		✓		5.06"(129)	10.43"(265)	1.78"(45)	
RP600-125-10-S-F	125	10		✓			✓	5.06"(129)	10.26"(261)	1.78"(45)	
RP600-125-10-W-B	125	10	✓			✓		*	*	*	
RP600-125-10-W-F	125	10	✓				✓	*	*	*	
RP600-125-100-C-B	125	100			✓	✓		5.06"(129)	10.26"(261)	1.78"(45)	
RP600-125-100-C-F	125	100			✓		✓	*	*	*	
RP600-125-100-S-B	125	100		✓		✓		5.06"(129)	10.43"(265)	1.78"(45)	
RP600-125-100-S-F	125	100		✓			✓	5.06"(129)	10.26"(261)	1.78"(45)	

ADDITIONAL MODEL NO. >>

RP600

HIGH PERFORMANCE DC POWER LINE FILTER

MODEL NO.	RATED CURRENT, A @ 40° C	Y-CAP, nF	TERMINAL OPTIONS			MOUNTING OPTIONS		MAX. DIMENSIONS" (MM)		
			(W) INPUT/ OUTPUT	(S) INPUT/ OUTPUT	(C) INPUT/ OUTPUT	BULKHEAD	FLANGE	WIDTH	(LENGTH)	HEIGHT
RP600-125-100-W-B	125	100	✓			✓		*	*	*
RP600-125-100-W-F	125	100	✓				✓	*	*	*
RP600-125-1000-C-B	125	1000			✓	✓		5.06"(129)	10.26"(261)	1.78"(45)
RP600-125-1000-C-F	125	1000			✓		✓	*	*	*
RP600-125-1000-S-B	125	1000		✓		✓		5.06"(129)	10.43"(265)	1.78"(45)
RP600-125-1000-S-F	125	1000		✓			✓	5.06"(129)	10.26"(261)	1.78"(45)
RP600-125-1000-W-B	125	1000	✓			✓		*	*	*
RP600-125-1000-W-F	125	1000	✓				✓	*	*	*

*Contact factory for dimensions.

TYPICAL INSERTION LOSS, dB (50/50 Ohm)

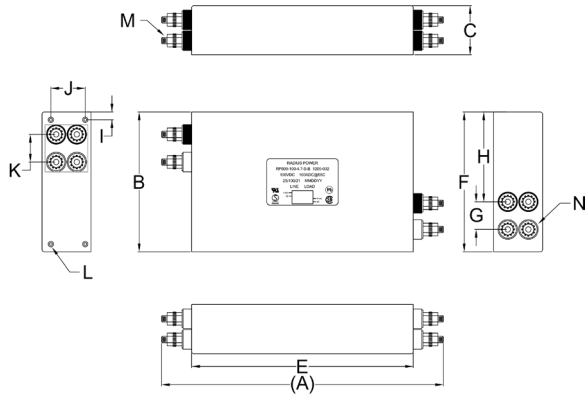
Amps	Freq (MHz)	0.15	0.5	1.0	10	30
15	CM (dB)	22	42	50	50	40
	DM (dB)	30	32	38	40	35
30	CM (dB)	24	50	60	45	38
	DM (dB)	32	35	60	45	30
60	CM (dB)	18	40	40	45	35
	DM (dB)	40	42	35	42	35
80	CM (dB)	18	40	40	45	35
	DM (dB)	40	42	35	42	35
100	CM (dB)	20	40	40	35	25
	DM (dB)	40	42	30	45	35
125	CM (dB)	32	34	30	20	30
	DM (dB)	40	42	30	42	35

RP600

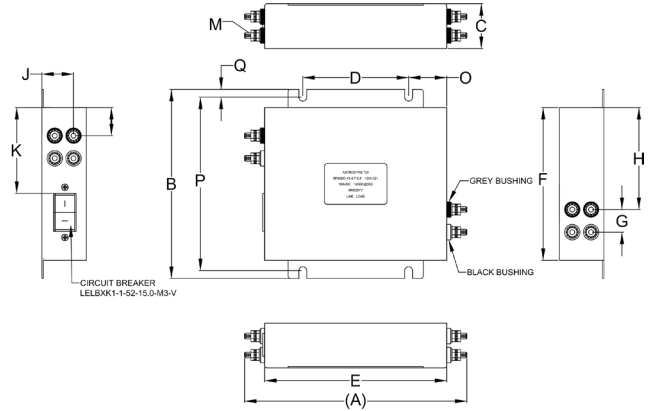
HIGH PERFORMANCE DC POWER LINE FILTER

RP600 MECHANICAL OUTLINES (MM)

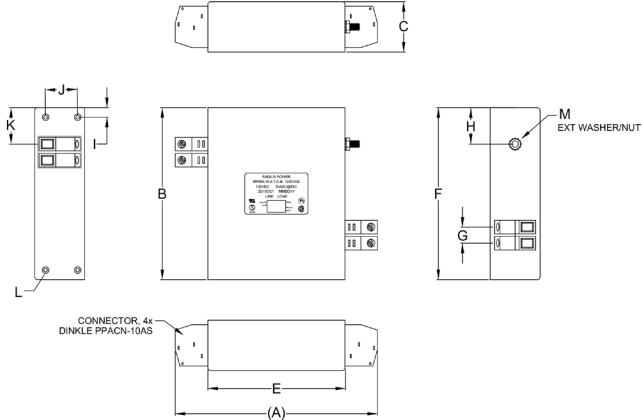
STUDS (B)



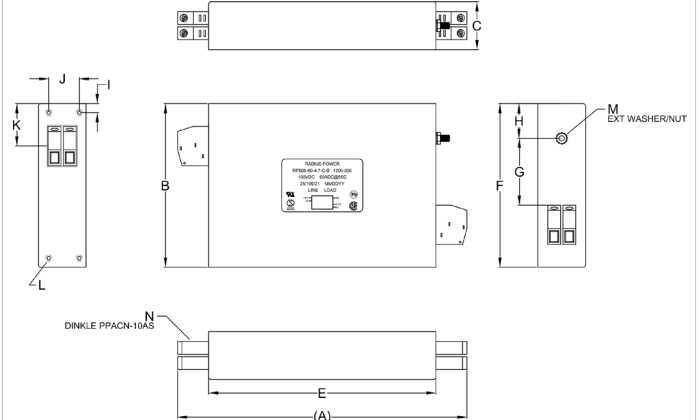
STUDS (F)



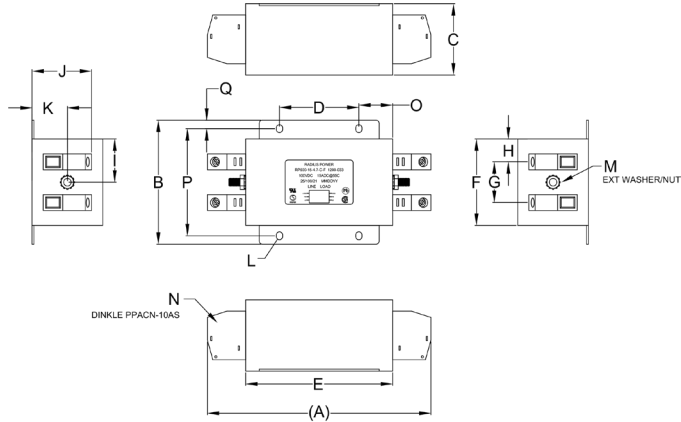
CONNECTORS (B) (15/30AMPS)



CONNECTORS (B) (60/80/100/125 AMPS)



CONNECTORS (F)



RP600

HIGH PERFORMANCE DC POWER LINE FILTER

SERIES	(A)	B	C	D	E	F	G	H	I	J	K	L	M	N	O	P	Q
STUDS (B) (15A)	5.47" (139)	5.06" (129)	1.48" (38)	N/A	4.06" (139)	5.06" (129)	0.75" (19)	N/A	0.28" (7)	0.95" (24)	0.75" (19)	INSERT 6-32, 4x	STUD M5 GND	GREY BUSHING, 4x	N/A	N/A	N/A
STUDS (F) (15A)	5.12" (130)	3.10" (79)	1.78" (45)	2.00" (51)	3.70" (94)	3.10" (79)	0.75" (19)	0.71" (18)	N/A	1.23" (31)	0.60" (15)	Ø 0.20X0.16" (Ø 5.08X3.96)	STUD M5 GND	GREY BUSHING, 4x	N/A	N/A	N/A
CONNECT. (B) (15A)	5.99" (152)	5.06" (129)	1.48" (38)	N/A	4.08" (104)	5.06" (129)	0.47" (12)	1.07" (27)	0.28" (7)	0.95" (24)	1.07" (27)	INSERT 6-32, 4x	STUD M5 GND	N/A	N/A	N/A	N/A
CONNECT. (F) (15A)	5.63" (143)	3.10" (79)	1.78" (45)	2.00" (51)	3.70" (94)	2.16" (55)	1.02" (26)	0.57" (15)	1.08" (27)	0.89" (23)	1.50" (38)	Ø 0.19"x0.15",4x (Ø 5.0x4.0, 4x)	STUD M5 GND	CONNECTOR, 4x	0.85" (22)	2.68" (68)	0.21" (5)
STUDS (B) (30A)	7.48" (190)	5.06" (129)	1.48" (38)	N/A	6.06" (154)	5.06" (129)	0.75" (19)	N/A	0.28" (7)	0.95" (24)	0.75" (19)	INSERT 6-32, 4x	STUD M5, GND	GREY BUSHING, 4x	N/A	N/A	N/A
STUDS (F) (30A)	5.96" (152)	3.96" (101)	2.18" (55)	2.00" (51)	4.58" (116)	3.50" (89)	0.75" (19)	1.10" (28)	N/A	1.43" (36)	0.80" (20)	Ø 0.20X0.16" (Ø 5.08X3.96)	STUD M5 GND	GREY BUSHING, 4x	N/A	N/A	N/A
CONNECT. (B) (30A)	7.99" (203)	5.06" (129)	1.48" (38)	N/A	6.06" (154)	5.06" (129)	0.49" (13)	3.52" (89)	0.28" (7)	0.95" (24)	1.35" (34)	INSERT 6-32, 4x	STUD M5, GND	CONNECTOR, 4x	N/A	N/A	N/A
CONNECT. (F) (30A)	6.49" (165)	3.96" (101)	2.18" (55)	2.00" (51)	4.56" (116)	2.96" (75)	1.18" (30)	0.89" (23)	1.48" (38)	1.70" (43)	1.09" (28)	Ø 0.19"x0.15",4x (Ø 5.0x4.0, 4x)	STUD M5 GND	CONNECTOR, 4x	1.28" (33)	3.50" (89)	0.23" (6)
STUDS (B) (60/80A)	9.40" (239)	5.06" (129)	1.48" (38)	N/A	7.06" (179)	5.06" (129)	0.75" (19)	N/A	0.28" (7)	0.95" (24)	0.75" (19)	INSERT 6-32, 4x	STUD M5 GND	GREY BUSHING, 4x	N/A	N/A	N/A
STUDS (F) (60/80A)	8.31" (211)	5.48" (139)	2.55" (65)	2.76" (70)	5.94" (151)	5.48" (139)	0.75" (19)	1.79" (45)	N/A	1.61" (41)	0.99" (25)	Ø 0.26X0.39" (Ø 6.60X9.90)	STUD M5 GND	GREY BUSHING, 4x	N/A	N/A	N/A
CONNECT. (B) (60/80A)	8.99" (228)	5.06" (129)	1.48" (38)	N/A	7.06" (179)	5.06" (129)	2.07" (53)	1.03" (26)	0.28" (7)	0.95" (24)	1.31" (33)	INSERT 6-32, 4x	STUD M5 GND	CONNECTOR, 4x	N/A	N/A	N/A
CONNECT. (F) (60/80A)	7.87" (200)	5.48" (139)	2.55" (65)	2.58" (65)	5.94" (151)	4.32" (110)	0.98" (25)	1.67" (42)	3.73" (95)	1.97" (50)	0.77" (20)	Ø 0.40"x0.25", 4x (Ø 10.4x6.6, 4x)	STUD M5 GND	CONNECTOR, 4x	1.68" (43)	4.92" (125)	0.28" (7)
STUDS (B) (100/125A)	10.43" (265)	5.06" (129)	1.78" (45)	N/A	8.06" (265)	5.06" (129)	1.00" (25)	N/A	0.28" (7)	1.25" (32)	1.00" (25)	INSERT 6-32, 4x	STUD M6, 8x	GREY BUSHING, 4x	N/A	N/A	N/A
STUDS (F) (100/125A)	10.26" (261)	5.06" (129)	1.78" (45)	N/A	8.06" (205)	5.06" (129)	1.00" (25)	3.25" (83)	0.28" (7)	1.25" (32)	1.00" (25)	INSERT 6-32, 4x	STUD M6, 8x	GREY BUSHING, 4x	N/A	N/A	N/A
CONNECT. (B) (100/125A)	10.26" (261)	5.06" (129)	1.78" (45)	N/A	8.06" (205)	5.06" (129)	1.00" (25)	3.25" (83)	0.28" (7)	1.25" (32)	1.00" (25)	INSERT 6-32, 4x	STUD M6, 8x	GREY BUSHING, 4x	N/A	N/A	N/A

TYPICAL TOLERANCE: +/-0.02" (0.50MM)