

FEATURES

- Excellent electrical connection
- Reduces short circuits
- DIN Colour coded collar for easy ferrule size identification
- Nylon insulated collar for reduced leakage, creepage and gas intrusion
- Tin plated copper tube for excellent conductivity
- Crimped terminal can be repeatedly inserted and removed without degrading end of the wire

RS PRO Insulated Crimp Bootlace Ferrule, 12mm Pin Length, 3.5mm Pin Diameter, 6mm² Wire Size, Yellow

RS Stock No.: 513-2641



RS Professionally Approved Products bring to you professional quality parts across all product categories. Our product range has been tested by engineers and provides a comparable quality to the leading brands without paying a premium price.

Product Description

From RS PRO a range of high-quality French colour coded bootlace ferrules (also known as cord end terminals) for providing a clean end termination to multi-stranded wires. These reliable wire ferrules ensure that you have a positive connection when connecting wires to terminal blocks and captive terminals

Suitable Crimping Tools

For ferrules with a wire size range of 0.25 to 6 mm² use crimping tool frame stock number [848-391](#) with crimping die [848-420](#)

For ferrules with a wire size range of 10 to 25 mm² use crimping tool stock number [297-2935](#)

General Specifications

Number of Entries	1
Insulation	Insulated
Insulation Material	Nylon
Colour	Yellow
Contact Material	Copper
Contact Plating	Tin
Terminal Material	Copper tube
Surface Treatment	Tin plate
Insulation colour	Yellow
Ferrule Type	French
Pack Quantity	10
Application	Bootlace ferrules are used on multi-stranded wires that are being inserted into screw terminals and terminal blocks. Applications include consumer units, circuit breakers, electrical control panels and any equipment where there is a requirement for a multi-stranded wire connection

Electrical Specifications

Current Rating	9A
Voltage Rating	300V

Mechanical Specifications

Maximum Wire Size (mm ²)	6
Maximum Wire Size (AWG)	10
Pin Diameter	3.5mm
Pin Length	12mm
Overall Length	20mm
Weight	0.0520kg

Operation Environment Specifications

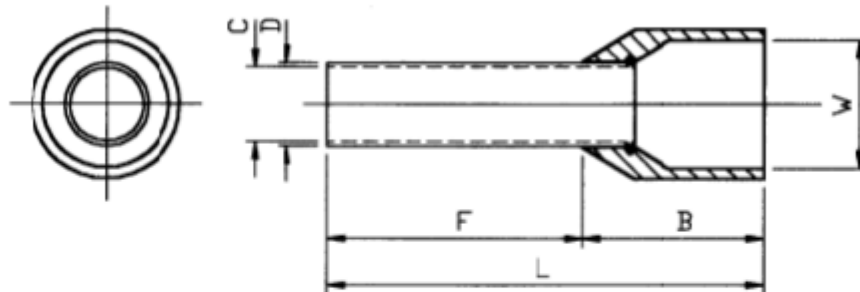
Maximum Temperature	105°C
---------------------	-------

Approvals

Compliance/Certifications	CE / UR / cUR
---------------------------	---------------



Dimensions (mm)



Stock Number	F ± 0.50	L ± 1.00	W ± 0.30	B ± 0.50	D ± 0.10	C ± 0.10	Colour
513-2641	12	20.5	6	8.5	3.9	3.5	YELLOW